

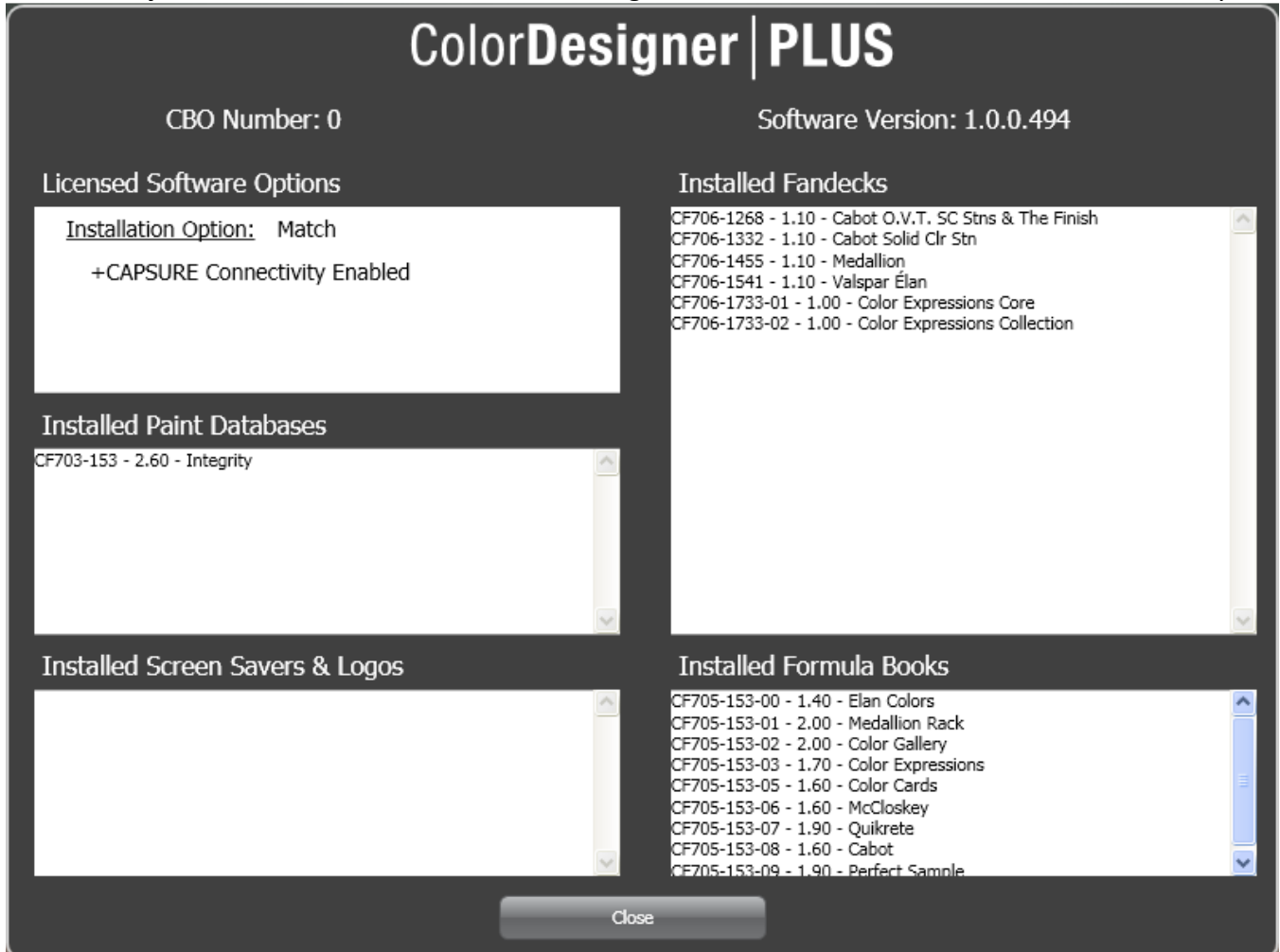
Using CAPSURE with ColorDesigner PLUS

General Setup

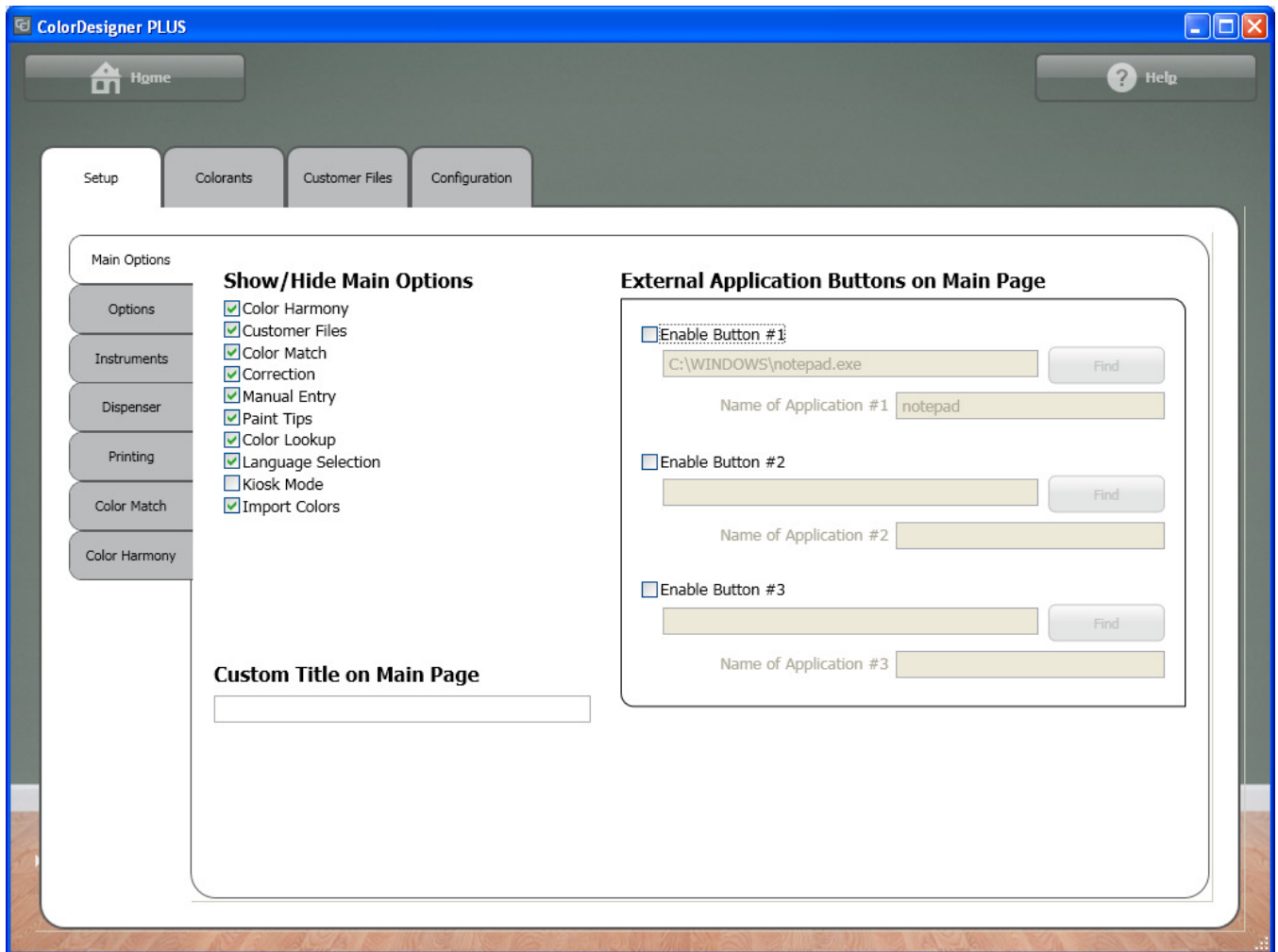
1. Install the ColorDesigner PLUS software.
2. Install the CAPSURE Sync software (supplied with your CAPSURE unit) or the CAPSURE Palette software.

ColorDesigner PLUS Setup



3. The ColorDesigner PLUS license must include CAPSURE connectivity. The About screen provides this information. In the example below, in the **Licensed Software Options** section, see the text **+CAPSURE Connectivity Enabled**. This indicates the ColorDesigner PLUS license includes CAPSURE connectivity.

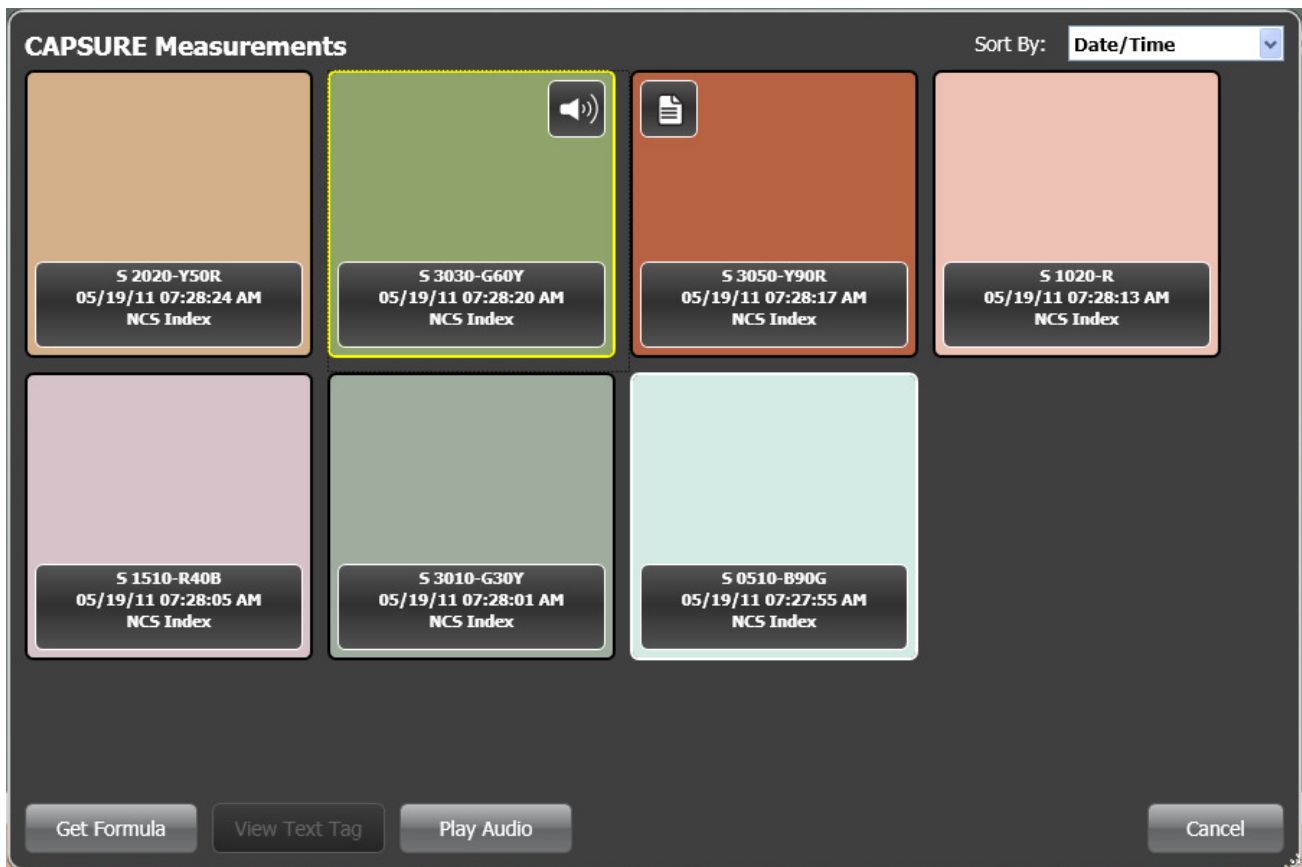


4. The Import Colors feature must be enabled in ColorDesigner PLUS. To enable it, go into **Settings**, to the **Setup** tab, to the **Main Options** tab. Make sure **Import Colors** is enabled.



Loading stored colors from CAPSURE to ColorDesigner PLUS

5. Be sure the CAPSURE Sync software or the CAPSURE Palette software is running.
 - If CAPSURE Sync is running, you will see its icon in the Windows System Tray, in the lower right corner of your screen.
 - CAPSURE Sync icon:
 
 - Example of Windows System Tray, with CAPSURE Sync running:
 
 - *Note: If neither CAPSURE Sync nor CAPSURE Palette is running, ColorDesigner PLUS will not be able to access the colors stored on your device.*
6. Connect the CAPSURE unit to the computer. The CAPSURE software will automatically load the stored readings from the CAPSURE unit onto the computer.
7. In ColorDesigner PLUS, click **Import Colors**. You can do this from the main screen or from Expert Mode.



8. You can now browse the colors from the CAPSURE device.
9. If a color has a voice tag (see the green color in our example), a speaker icon will be displayed on the color. To hear to the voice tag, click on the color and then click the **Play Audio** button.
10. If a color has a text tag (see the orange color in our example), a printed page icon will be displayed on the color. To read the text tag, click on the color and then click the **View Text Tag** button.
11. When you find the desired color, click **Get Formula**. ColorDesigner PLUS will search its database for these colors. Then you can choose a paint product and can size to get a formula. And finally you can dispense, print a formula label, or save to customer files.
 - *Note: ColorDesigner PLUS will search corresponding Color Collections for the selected color. It searches by the color name, not by the appearance of the color.*