

X-Rite Guidelines for Col iQC PantoneLIVE plug in set up and use

Version 1.3

September 2015

Table of Contents

Introduction	3
Setup the “My Xrite” account	4
Installing iQCPantoneLIVE plug in for Color iQC	6
Activating PantoneLIVE in Col iQC.....	7
Col iQC PantoneLIVE plug in configuration	8
.....	9
PantoneLIVE -Regular Checking	11

Introduction

PantoneLIVE is a cloud based architecture, and requires a license to access the digital assets that are stored there.

Once issued a PantoneLIVE license is managed through the users “Myxrite Account” and it is necessary to match the username and password in your Myxrite account to the PantoneLIVE license.

Part of the PantoneLIVE license mechanism requires that libraries are updated and validated **at least** every 30 days.

The procedures on the following pages describe how to set up a My Xrite account, how to enter the correct details in Col iQC and how to install and configure the iQCPantoneLIVE plug in.

Setup the “My Xrite” account

Please ensure that the Myxrite account that is going to be used has Brand Owner visibility **set to YES**

Your Profile

Tell us about you:

Salutation
Mr. ▾

▶ First Name ▶ Last Name
Packaging Supplier

Title

Company

▶ Address 1
Demo Street

Address 2

What is our privacy policy?

X-Rite respects and values our customers' privacy. X-Rite will take reasonable steps to keep personal information collected from individual customers (such as name, address, occupation) secure and confidential. X-Rite will not give or sell our individual customers' personal information to any outside organization for use in marketing, or solicitation of others' products or services.

[...See Full Policy...](#)

(▶) indicates a required field

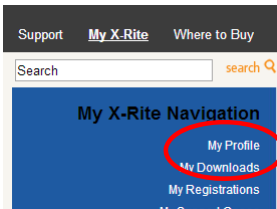
Portal Visibility*

Would you like to be visible to Brand Owners using PantoneLIVE?

Yes No

This ensures that the supplier can be allocated to any appropriate brand libraries.

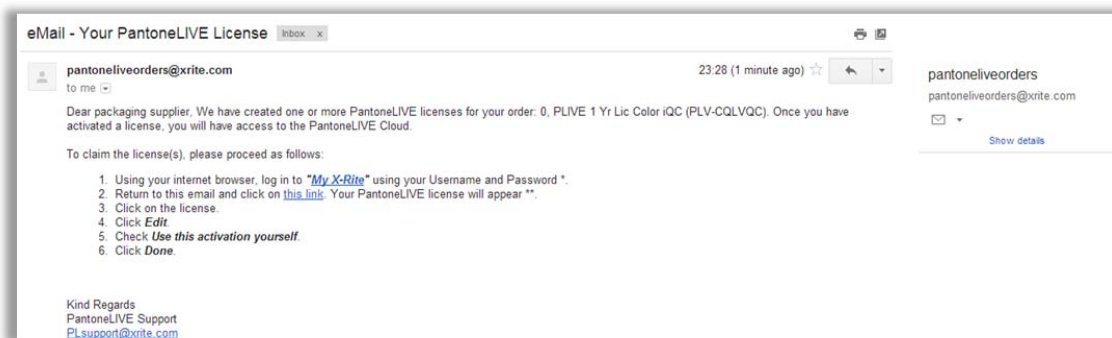
This option can be changed at any time by going to the My Profile section of the Myxrite account.



When the order for a PantoneLIVE license is placed an email will be sent to the email address supplied on the order.

The recipient **MUST** follow the instructions in this mail to make the PantoneLIVE licence accessible

X-Rite Guidelines for Col iQC PantoneLIVE plug in set up and use

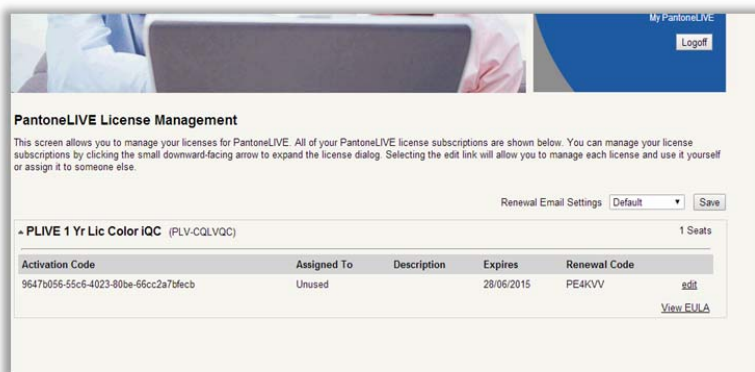
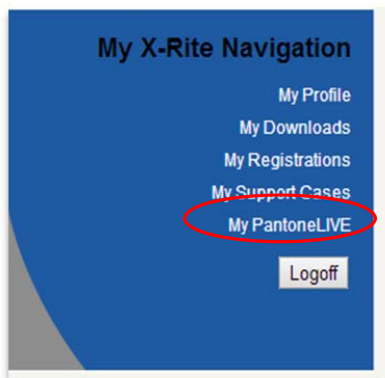


The user will then need to accept the End User Licence Agreement



The user may need to log out and back into their "My Xrite" Account before the PantoneLIVE licence is visible.

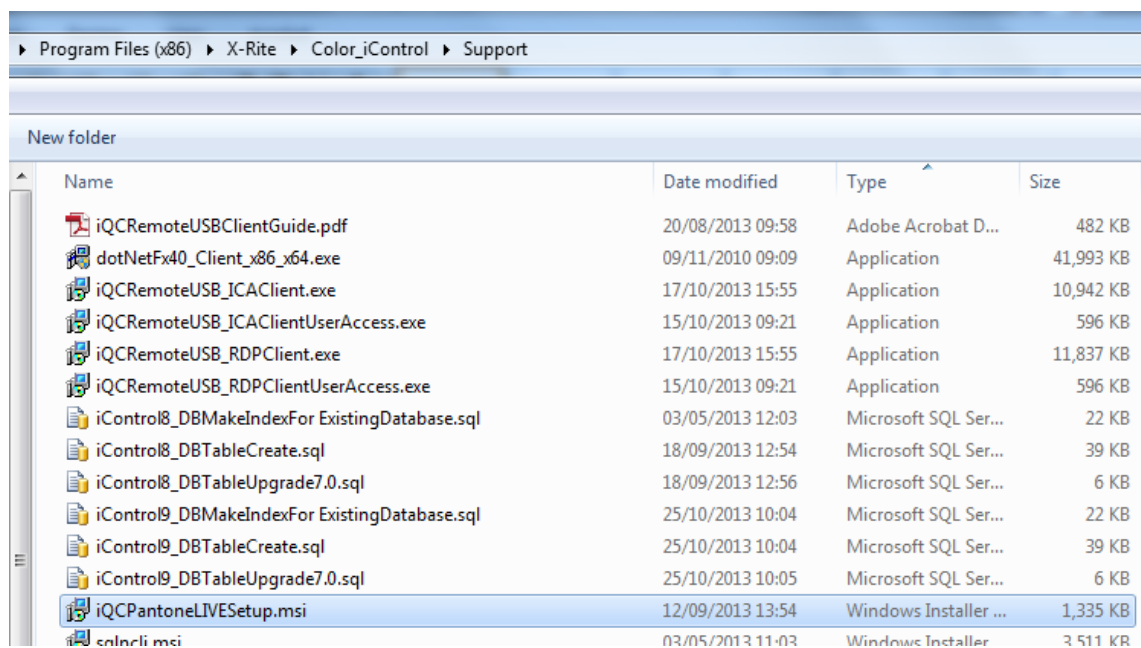
The type of PantoneLIVE license is shown in the My PantoneLIVE section.



Installing iQCPantoneLIVE plug in for Color iQC

Go to the folder \\Program Files (x86)\X-Rite\Color_iControl\Support\ (on 32 bit PC's this may be C:\Program Files\X-Rite\Color_iControl\Support\)

Right click on the file iQCPantoneLIVESetup.msi and select install.

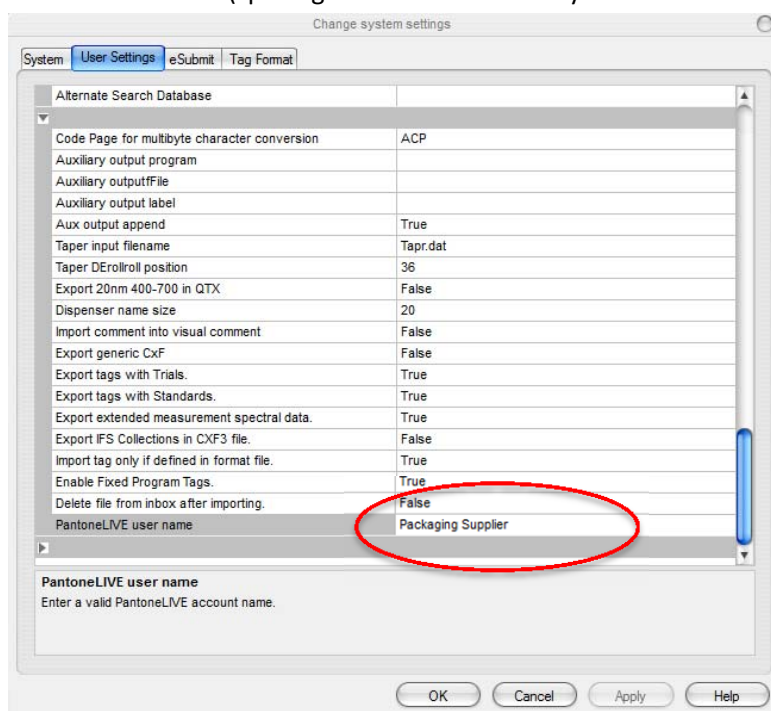


Follow the prompts and install for “all users”.

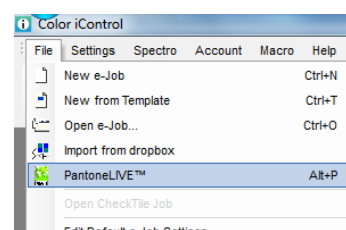
Activating PantoneLIVE in Col iQC

To activate the license in Col iQC.

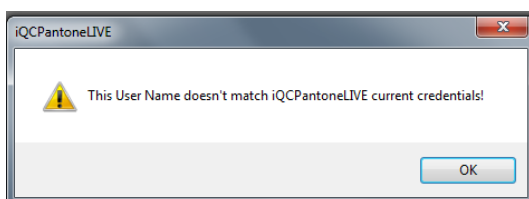
- i. Open Col iQC select the option *Open without job*
- ii. From the Settings Menu select “edit Default settings”
- iii. Go to the “user settings” tab, enter the PantoneLIVE user account name in the PantoneLIVE user name section (spellings must match the “My Xrite” account name exactly).



- iv. Press OK to accept the entry.
- v. From the File menu select PantoneLIVE (or press Alt +P) this will open up the IQC PantoneLIVE plug in dialogue.



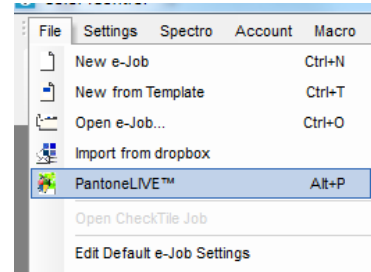
Until the license is fully activated you may see the following warning. This also shows if the username is typed incorrectly. Press OK to dismiss the window



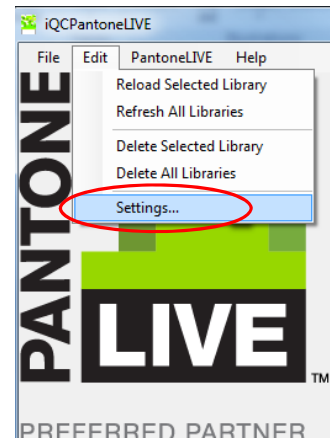
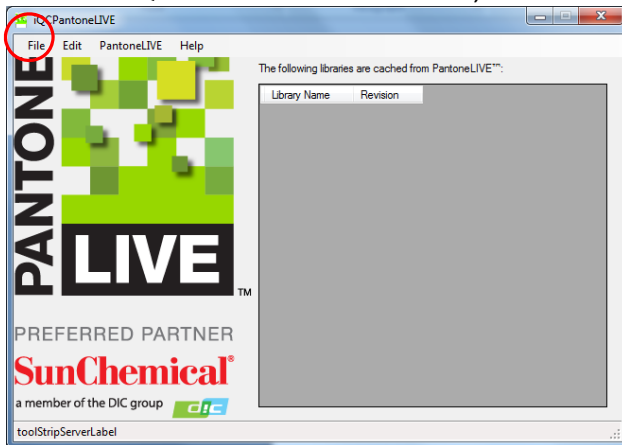
Col iQC PantoneLIVE plug in configuration

Start Col iQC. Select “open without job”. If a job is automatically opened then select close job (ALT+F4) so the software remains open with no active job.

Start up the iQC PantoneLIVE plug in by selecting PantoneLIVE from the File menu or else pressing “Alt+P”. This will start up the iQCPantoneLIVE plug in.



From the iQC PantoneLIVE edit menu, select “settings”



Enter the server details

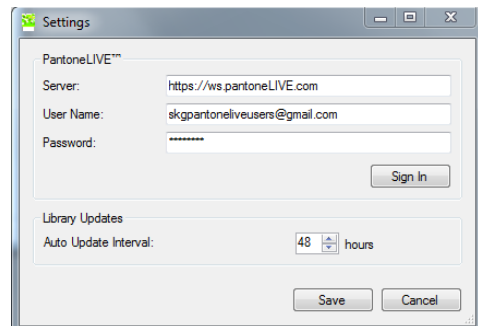
<https://ws.pantone.live.com>

Username = (enter your my x-rite username or the email used to access this)

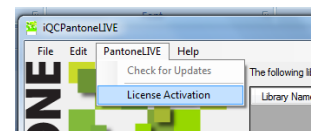
Password = (enter your myxrite account password)

Set the auto update interval to an appropriate time, we recommend 24 hours.

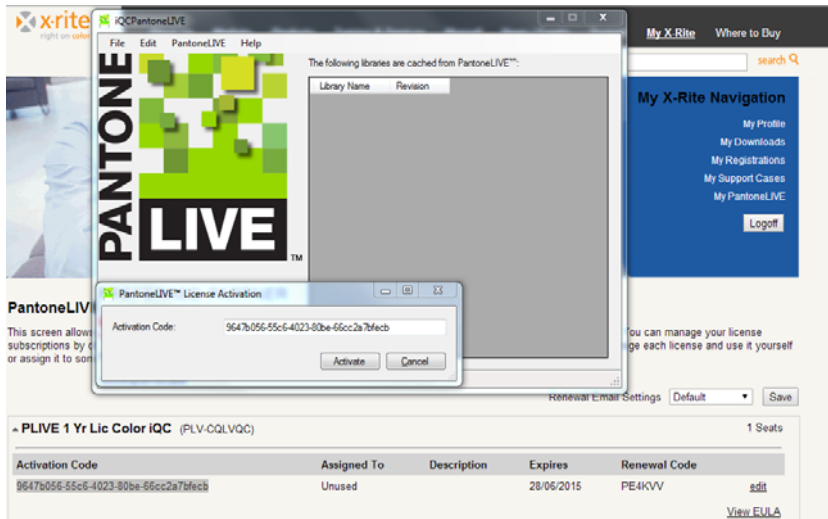
Press “sign in” and then “save”.



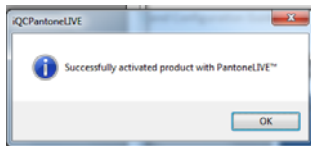
- vi. Go to PantoneLIVE menu and select license activation.



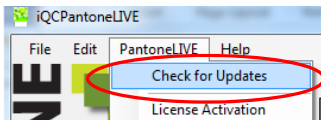
vii. Copy or type the activation code that is displayed in your “my Xrite” account into the



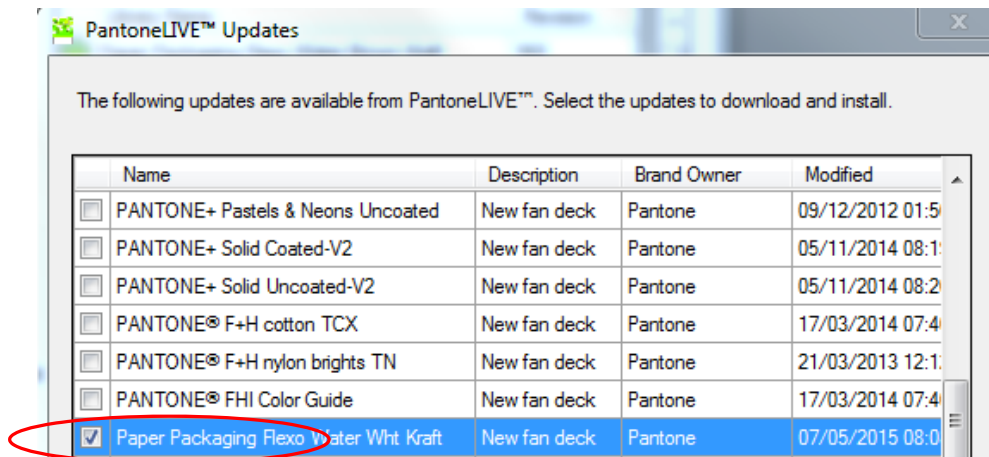
activation code window and press activate. A confirmation message will appear.



From the PantoneLIVE menu select “check for updates”



i) From the list of PantoneLIVE libraries presented select the libraries that you require and press Update.



- ii) The library should now appear in the current library list e.g.



The process should now be complete.

For additional support/queries your contacts are

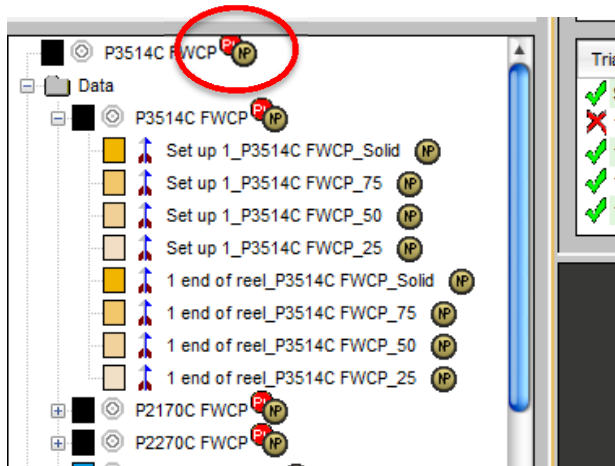
PLSupport@XRITE.com

PantoneLIVE -Regular Checking

As part of the PantoneLIVE licensing the iQC PantoneLIVE software needs to be activated at least once every 30 days to ensure that the latest libraries are downloaded and that the licensing mechanism is maintained.

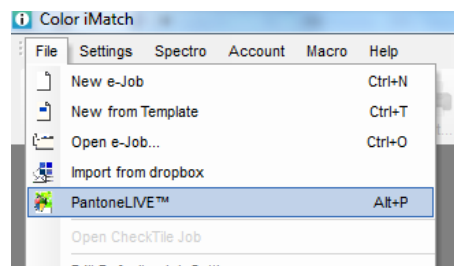
If for whatever reason the “auto update function” has not been set or has been unable to run, then the libraries will expire and their colour data obscured until the library refresh has been completed.

If this occurs then the colour would typically appear with a red warning PL logo beside the colour name. No accurate colour calculations can be carried out until the libraries are refreshed.

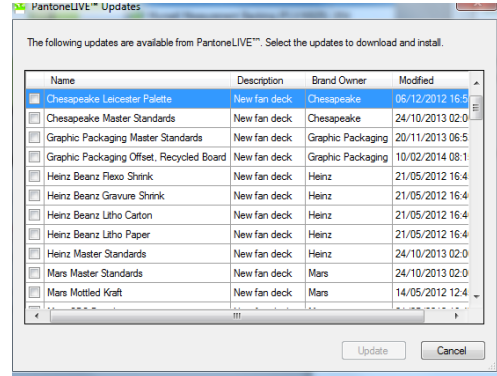


To refresh the libraries please use the following procedure.

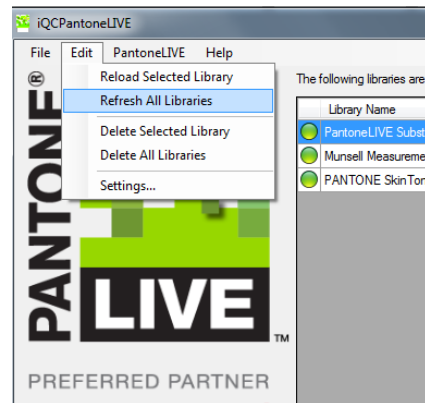
- i) Open up Col I QC, enter the relevant password and ensure that you select “Open without Job”
- ii) From the file menu select PantoneLIVE or press “Alt+P” to launch the iQCPantoneLIVE plug in.



- iii) Unless you wish download new libraries press Cancel when the new library list is presented



- iv) From the Edit menu in the iQCPantoneLIVE plug in select “refresh all libraries”. This refreshes all of the libraries and ensures that items are up to date and the license access is correct.



Once this process is complete then close the plug in and resume normal operation with Col iQC.