

NetProfiler Performance Checker

Quick Start Guide

Overview

The NetProfiler Performance Checker compares the performance of your spectrophotometer to its field specification. The step-by-step software guides you through the process, which takes about 15 minutes.

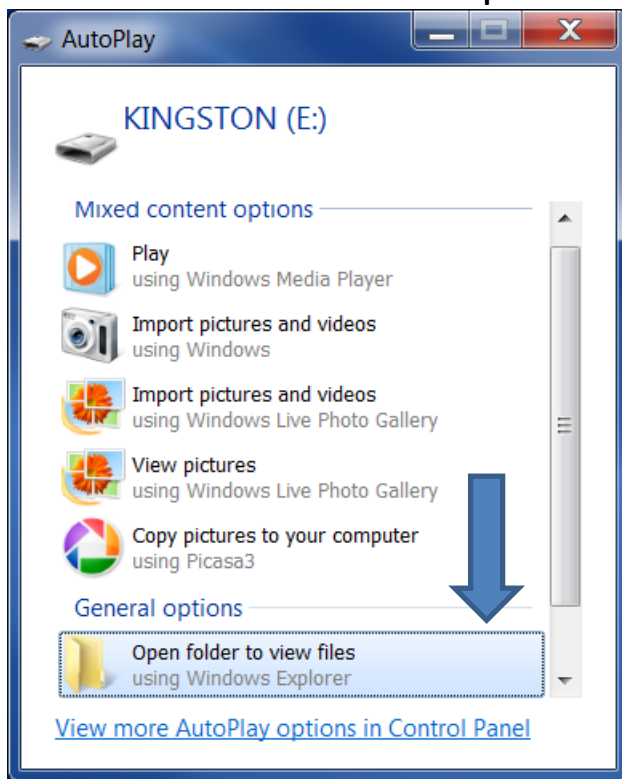
Starting the software

Before you run the NetProfiler Performance Checker software, make sure your instrument is powered on and the communication cable is connected to the computer.

Important Note: Be sure to close any software that uses the instrument (for example ColorDesigner PLUS, ColorDesigner, or other paint matching software).

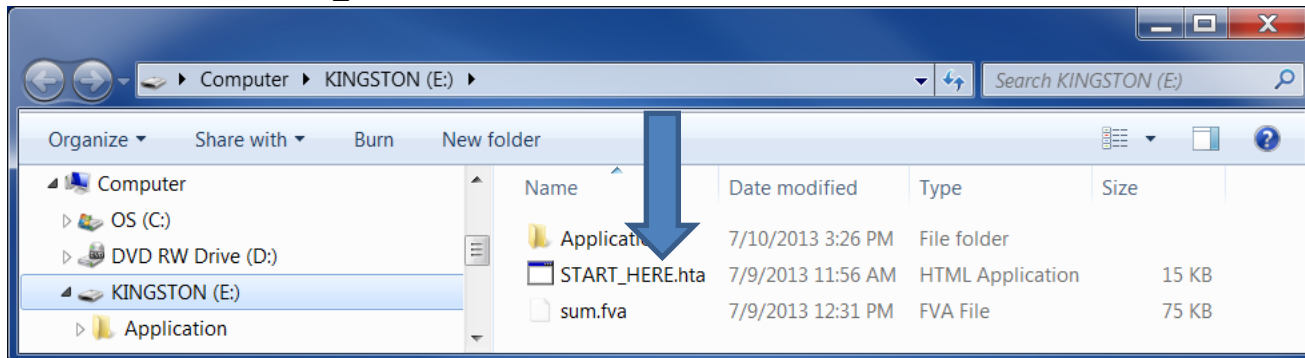
To start the software, take the USB Flash Drive from the NetProfiler Performance Checker folder, and insert it into any open USB port on the computer.

On computers running Windows 8, Windows 7, or Windows Vista, you will see an AutoPlay window. Click on the item labeled **Open folder to view files**.



NetProfiler Performance Checker Quick Start Guide

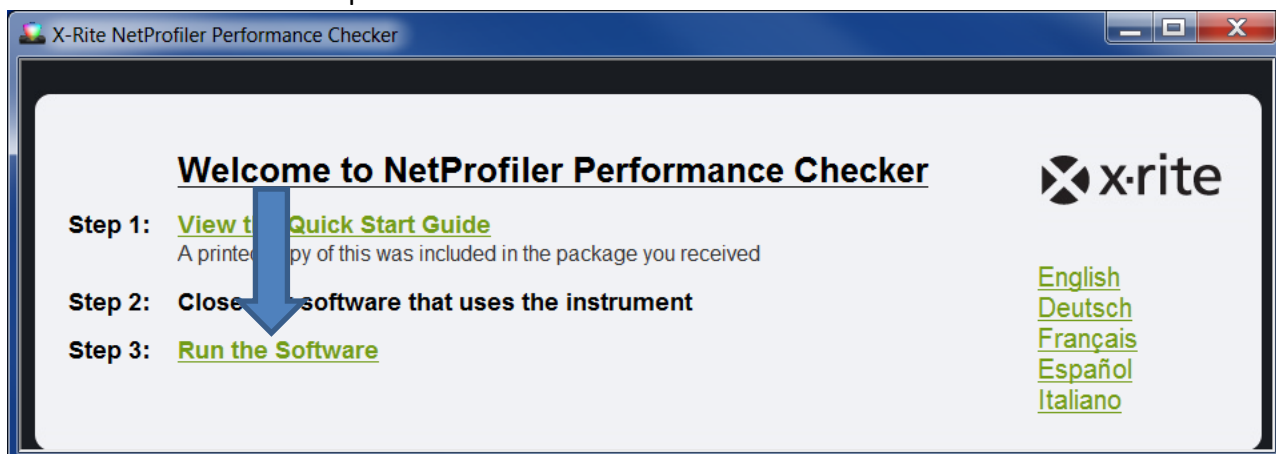
You will now see an Explorer window that shows the files on the USB Flash Drive. Double click on the item called **START_HERE.hta**.



The Dashboard Screen

The software begins at the dashboard screen.

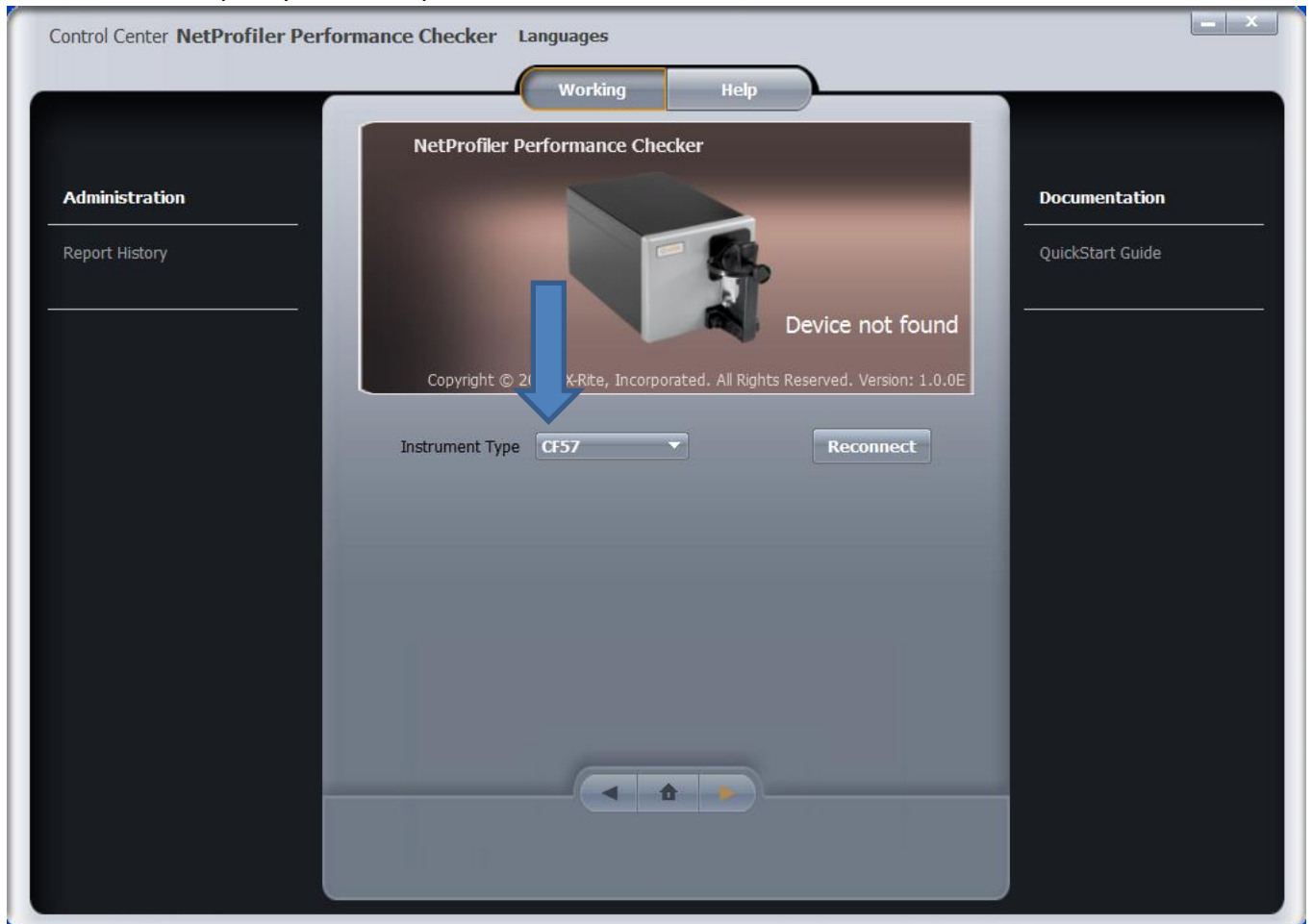
Click **Run the Software** to proceed.



NetProfiler Performance Checker Quick Start Guide

Selecting the Instrument

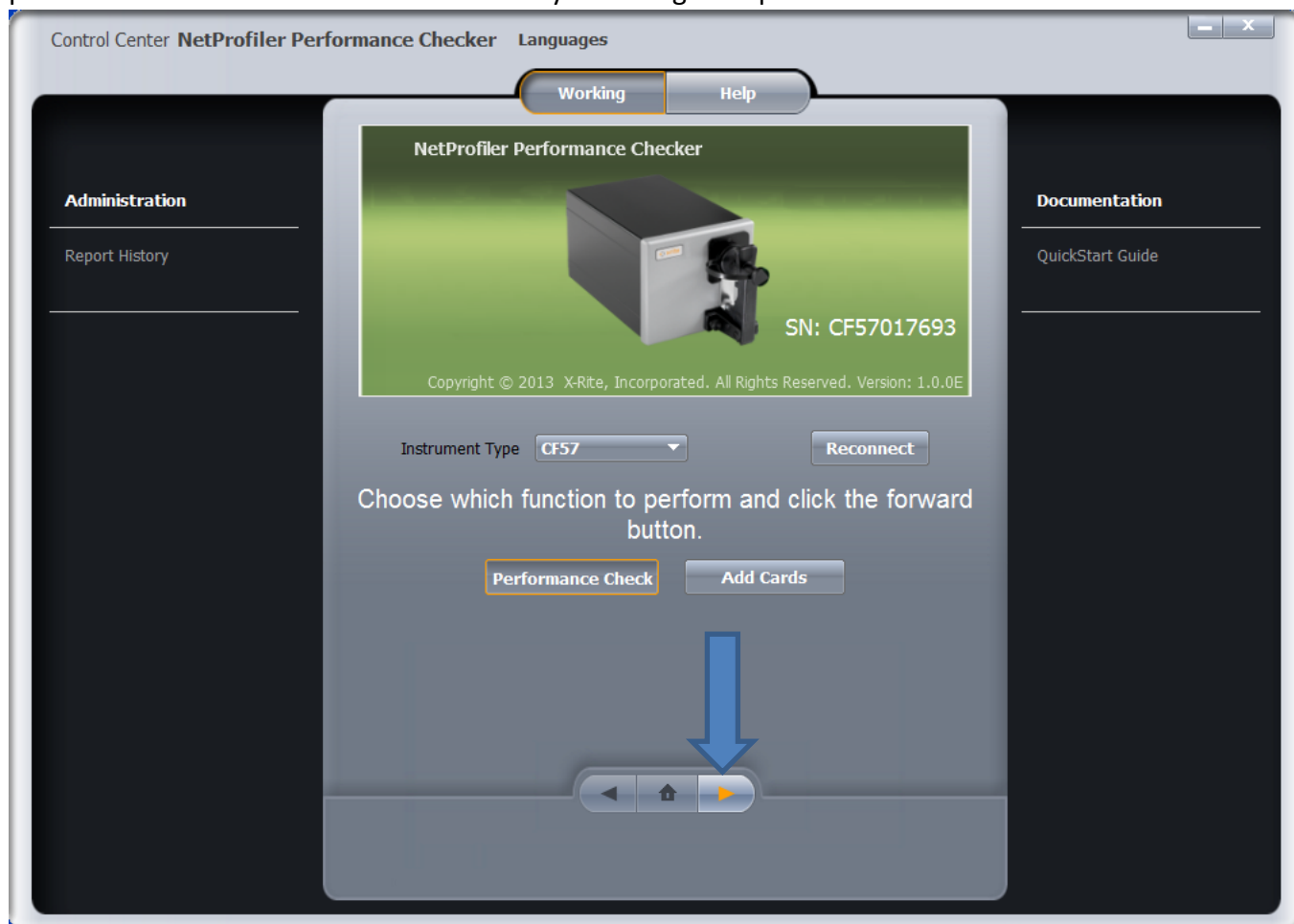
You will now see the main screen. Specify the **Instrument Type**. For some instruments, you will be asked to specify the COM port.



NetProfiler Performance Checker Quick Start Guide

Running the Performance Check

When the software connects to your instrument, the background around the picture of the instrument will turn green. Click the forward button (the orange arrow) to begin the performance check. The software will lead you through the process.



Running the software on a computer with no Internet connection

No Internet connection is required to run the Performance Checker software.

However, if you obtain additional Performance Checker cards, you will need an Internet connection to download the data for these cards. Use the **Add Cards** button to do so.