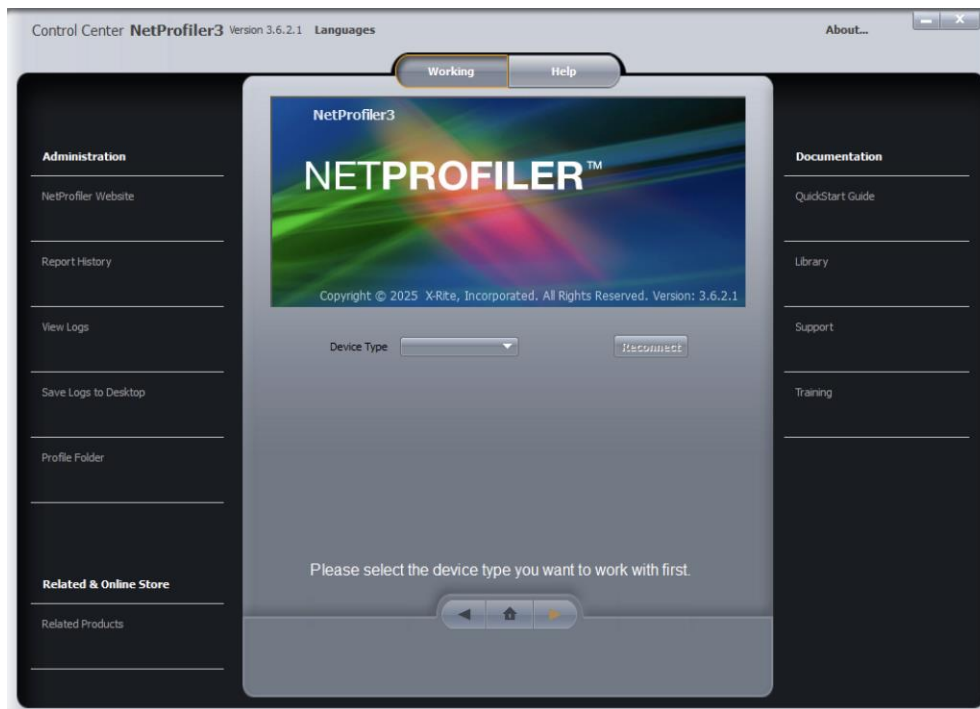


NetProfiler – Quick Start Guide



1. Introduction

Welcome to NetProfiler Desktop! This guide will help you install, set up, and start using the software quickly.

What it does:

NetProfiler is a cloud-based blend of software and color standards that makes it easy to validate and improve device performance, identify devices in need of service, and reduce variation between devices.

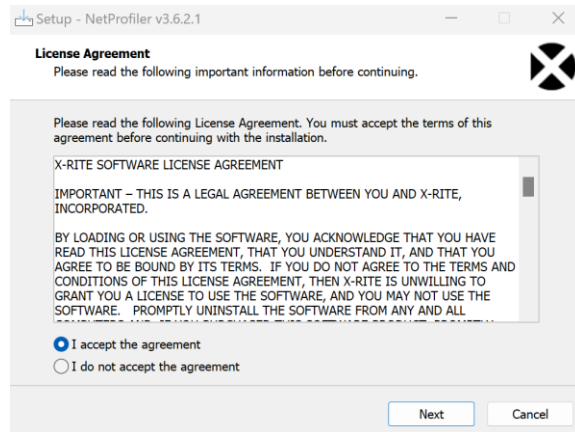
2. System Requirements

[NetProfiler Desktop Features and System Requirements \(Multilingual\)](#)

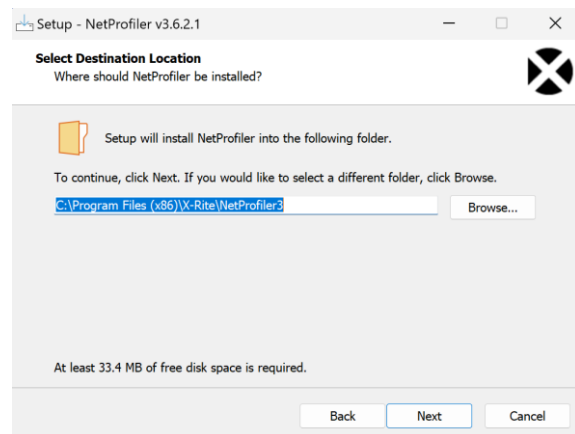
3. Installation / Setup

1. Download the NetProfiler 3.5.x installer or a later version from a [product web page](#).
2. Run the installer being logged in as administrator on the PC and follow the prompts:

Step 1: Accept License Agreement

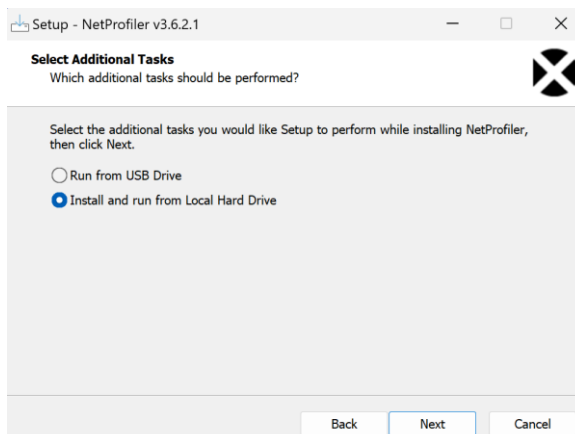


Step 2: Select Destination Location



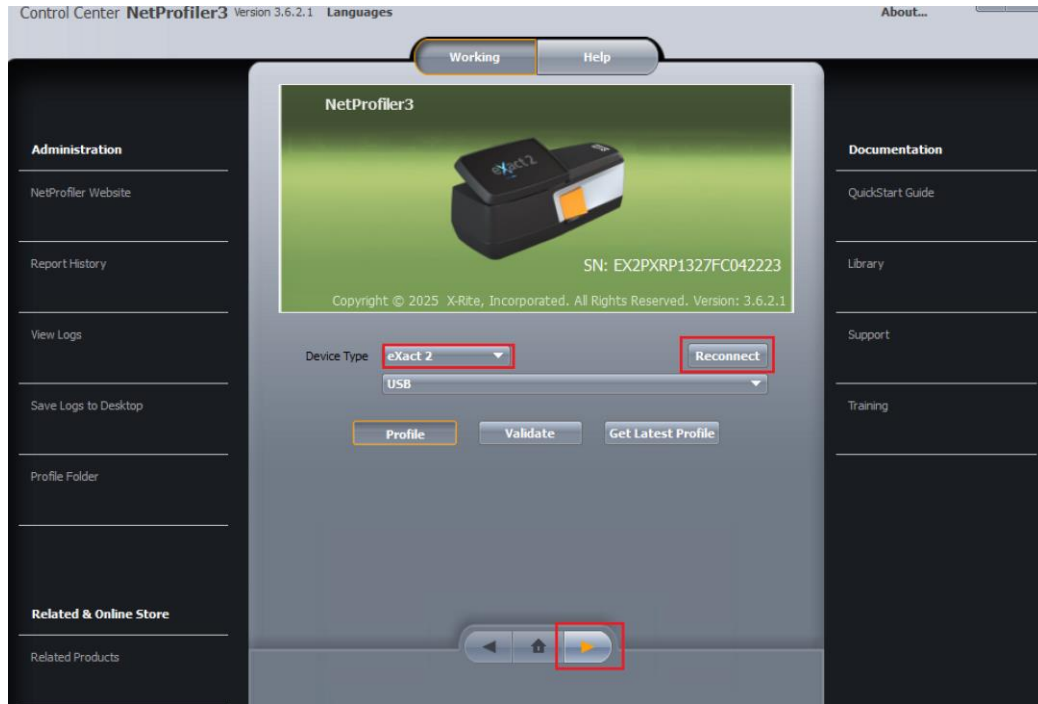
Step 3: Select 'Install and run from the Local Hard Drive' if you are using a PC with internet access (recommended).

Tip: If you want to use NetProfiler on a PC without internet access, go to section Offline Mode for more details.



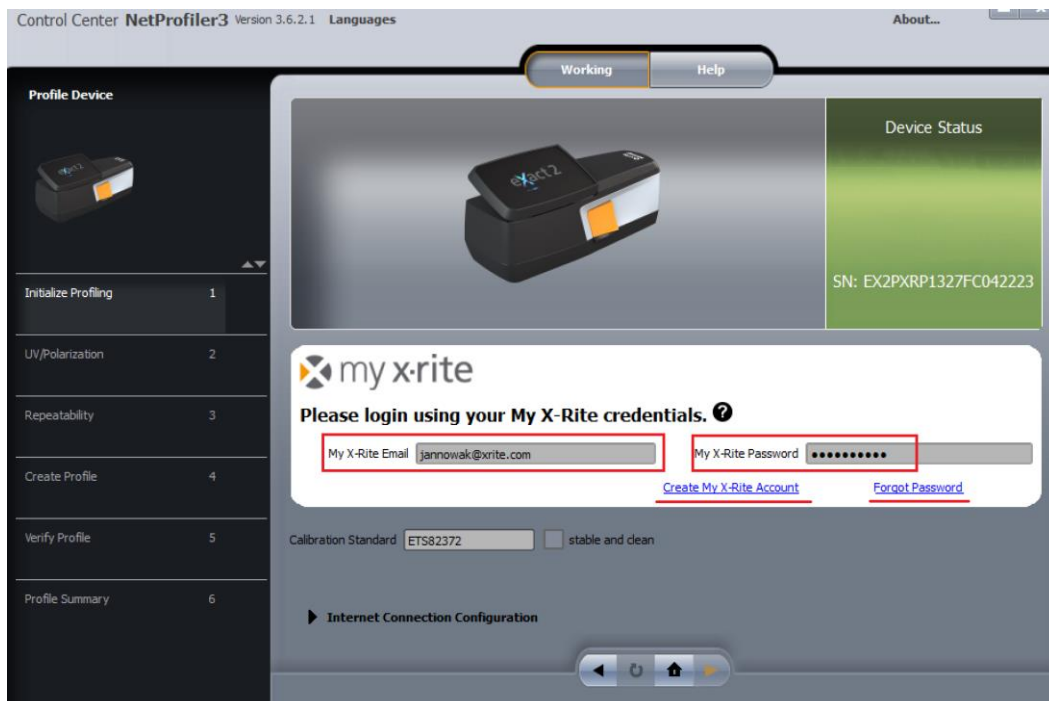
- Restart the PC and launch the software.
- Select the device type you want to profile from the drop-down list. Once NetProfiler connects to the device, the background will turn green and the device serial number will be displayed. Click the orange arrow to proceed to the next step

Tip: Ensure the device is ON, is connected to the PC and not in use by other software. Click the orange arrow to proceed to the next step.



- Type your **My X-Rite** credentials.

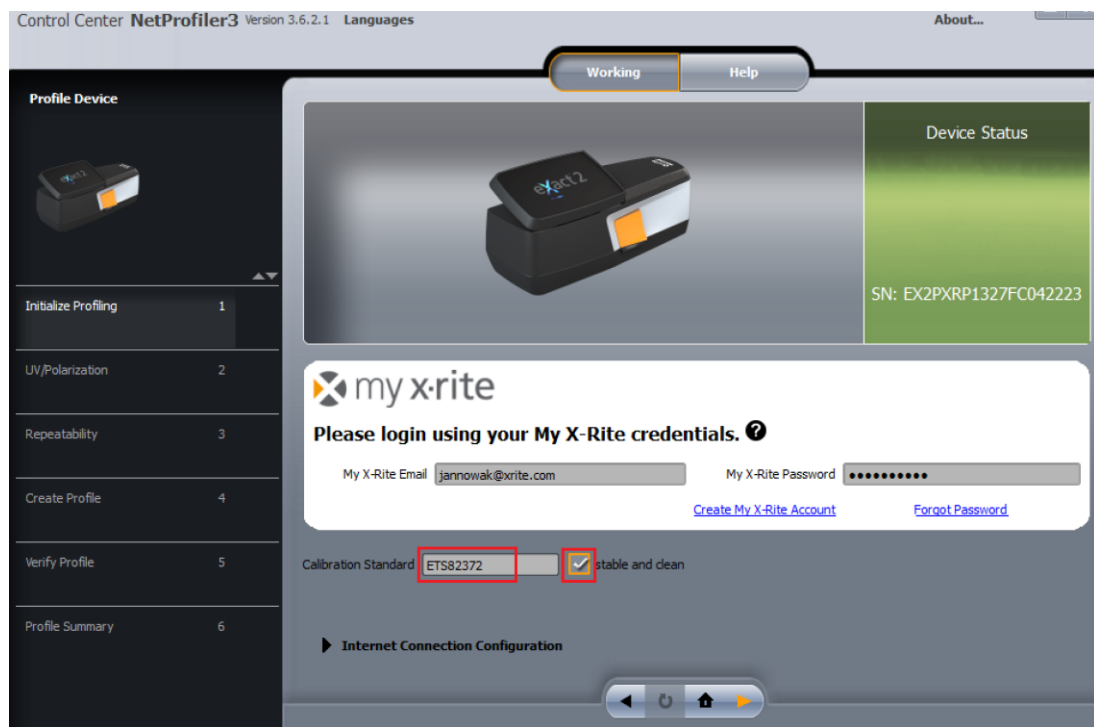
Tip: you can create a [My X-Rite Account](#) or reset the password if needed



6. Type the serial number of a calibration standard you are going to measure and check your device calibration standard for any contamination.

Tip: Type your NetProfiler calibration standard serial number into the software. This number is printed on a sticker on the calibration standard packaging and varies by standard type. It may follow formats such as HHS###C, BTS###C, ETS#####.

Tip: Keep your device optics and calibration standards clean. Dirt or contamination can affect measurement accuracy, precision, and repeatability.



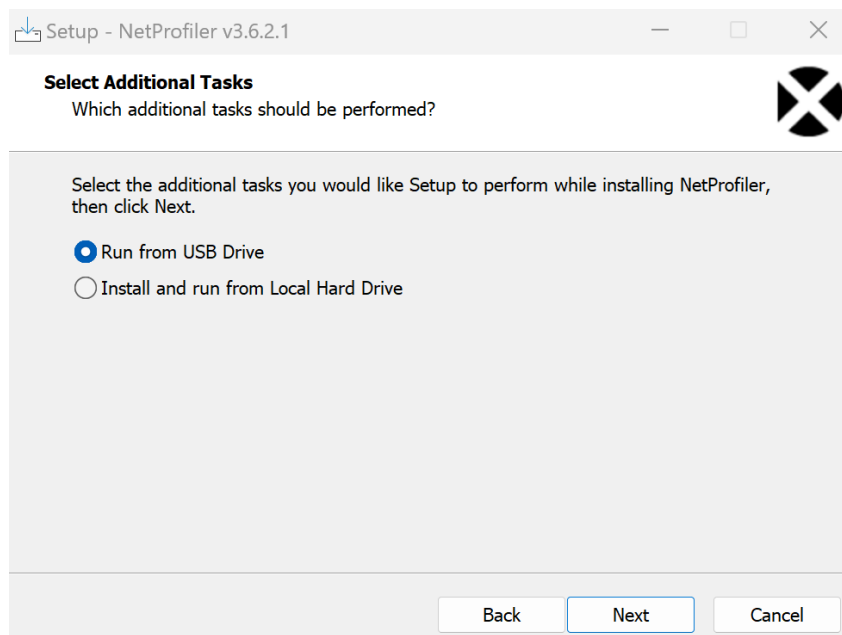
7. Optional: If you use a proxy server, go to the 'Network Configuration' section for proxy server settings.

Tip: To have the software remember your My-Xrite credentials, select the 'Retain login' option under Internet Connection Configuration.

8. Click the orange arrow to start profiling your device. Follow the steps prompted by the software.

4. Offline Mode

NetProfiler includes a “Run from USB Drive” option for users who need to generate profiles on computers without internet access. To use it, copy the downloaded NetProfiler installer to a USB drive and launch it from there. When prompted, select “**Run from USB Drive.**”



Important: Your first profile **must** be created on a computer with internet access. This downloads the required calibration data and license information to the USB drive. After this initial setup, you can generate additional profiles on offline computers by running NetProfiler directly from the USB drive.

In order to upload profiles created offline to NetProfiler server, connect the USB drive to a computer with internet access and launch NetProfiler. The profile data will sync automatically in about one minute. You can then close the application and remove the USB drive.

5. Configuring NetProfiler with a Proxy Server

If your company uses a proxy server, your IT department must enter the proxy server address.

Note: The username and password for the proxy server are **not** related to your My-Xrite credentials.

NetProfiler uses standard HTTP protocol to authenticate, with the default port set to **8888**.

NetProfiler Desktop provides an **Internet Connection Configuration** window for setting up a proxy server. To access it, go to the **Setup** drop-down menu and select **Internet Connection**.

