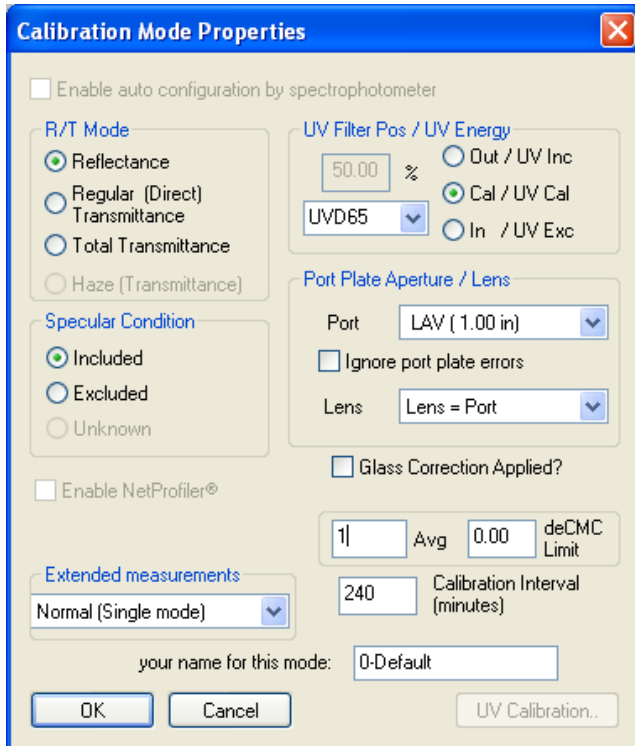


CE7000A UV Calibration procedure using Color iControl

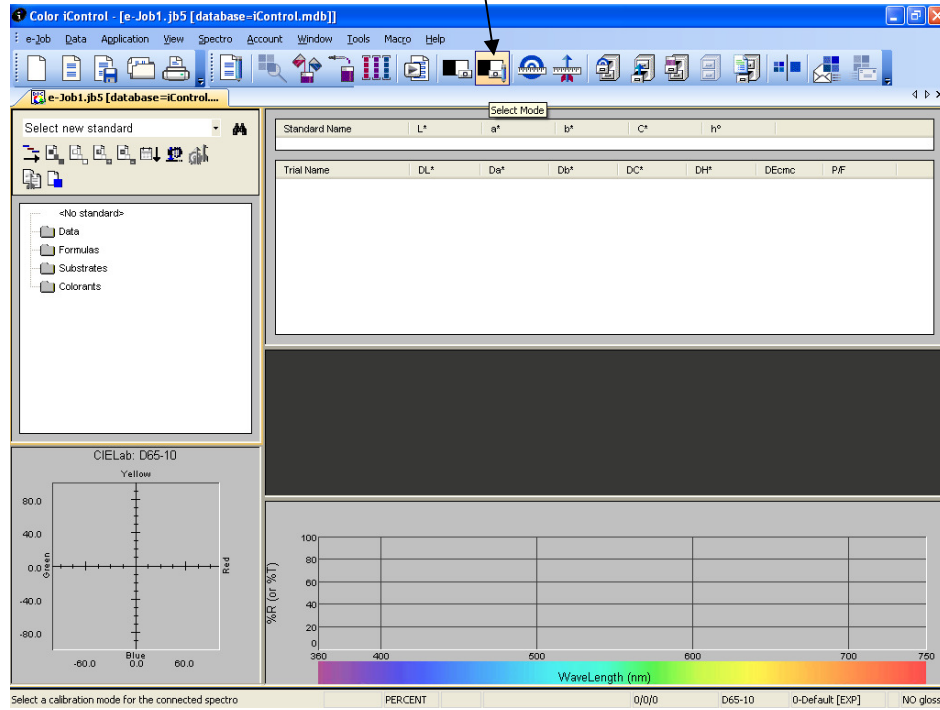
1. Install the LAV aperture and move the Lens to the LAV position. Select or create the LAV calibration mode.



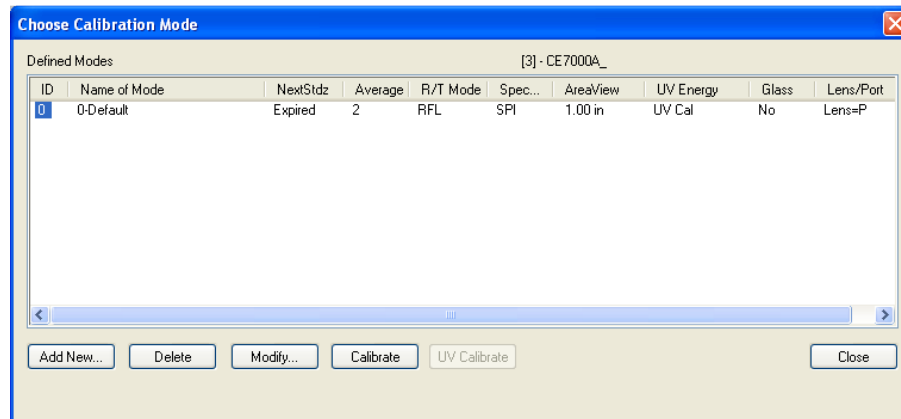
2. Prior to calibrating the UV filter on the instrument, you must perform a normal calibration using the black trap (zero calibration std). and white calibration tile.



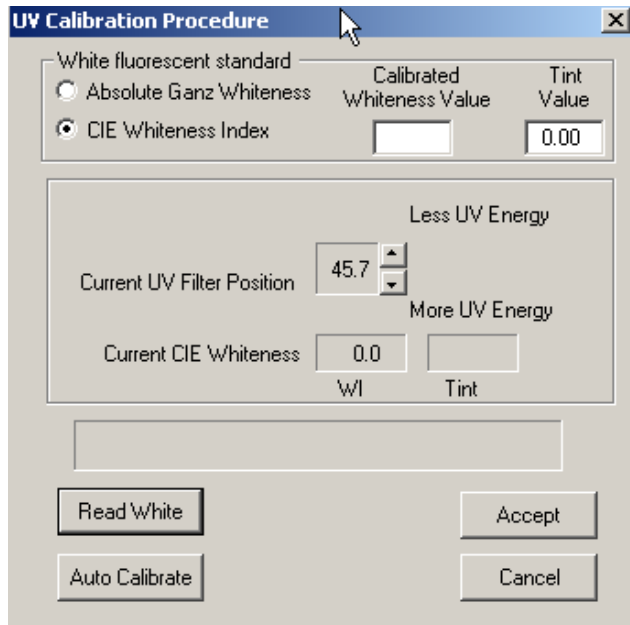
3. Click on the calibration mode icon.



4. Click on the “UV Calibrate” button.



6. Click on “Auto Calibrate” button. The system will automatically attempt to match the Ganz or CIE Whiteness value entered, adjusting the filter a little bit with each try. Once the current Ganz or CIE Whiteness value closely approaches value established for the standard, you will be informed and a difference value will be displayed.



7. Click on the Accept button to accept the calibration if the instrument passes the UV calibration.

