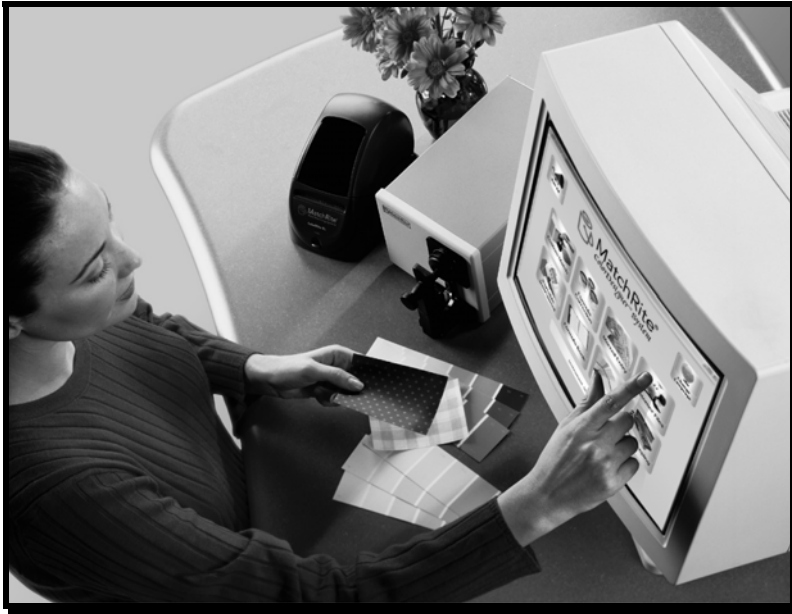


ColorDesigner

Database Builder



User's Guide

Proprietary Notice

The information contained in this manual is derived from patent and proprietary data of X-Rite, Incorporated. The contents of this manual are the property of X-Rite and are copyrighted. Any reproduction in whole or part is strictly prohibited. Publication of this information does not imply any rights to reproduce or use this manual for purposes other than installing and operating the system. No part of this manual may be reproduced, transcribed, transmitted, stored in a retrieval system, or translated into any language or computer language, in any form or by any means, electronic, magnetic, mechanical, optical, manual, or otherwise, without the prior written permission of an officer of X-Rite, Incorporated.

Copyright © 2001 by X-Rite, Incorporated

“ALL RIGHTS RESERVED”

X-Rite® and X-RiteColor® are registered trademarks. ColorDesigner™ and Formulation-Master™ are trademarks of X-Rite, Incorporated. Windows® is a registered trademark of Microsoft Corporation. All other logos, product names, and trademarks mentioned are the property of their respective holders.

Table of Contents

Proprietary Notice.....	1
Table of Contents.....	1
Getting Started.....	2
Installing The Software	2
Starting The Software	2
Creating A Project	3
Categories	5
Bases.....	7
Can Sizes	9
The Formula Display Dialogs.....	11
Viewing Data.....	14
Saving a Project.....	15
Deploying a Project	16
Technical Support	17

Getting Started

ColorDesigner™ Database Builder (CDDB) is a software utility that works in conjunction with Formulation-Master™ 2001 or X-RiteColor® Master to create a ColorDesigner database. This database is used in the MatchRite ColorDesigner product to create formulas for use in retail color matching applications.

Installing The Software

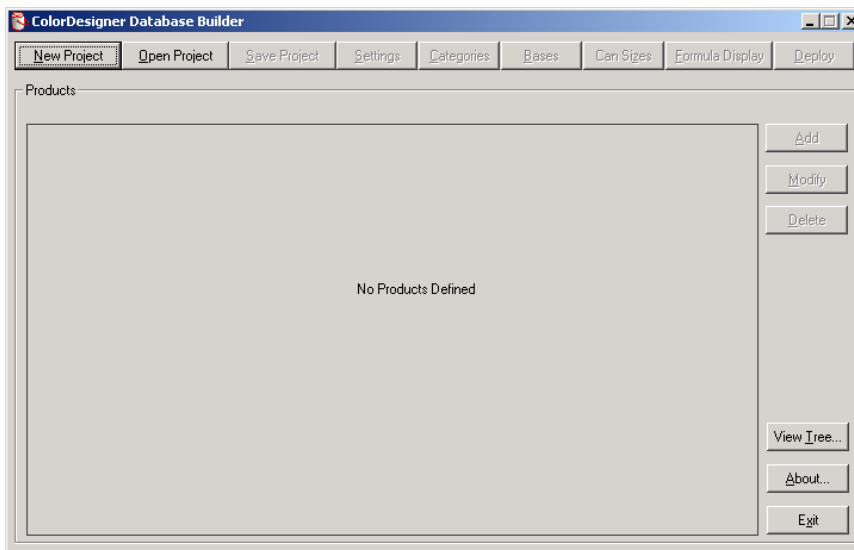
CDDB must be installed on a computer that already has Formulation-Master 2001 or X-RiteColor Master installed on it. Therefore, all of the requirements of those products are also requirements of this utility. CDDB does not require ColorDesigner, though the output this utility produces is used in the ColorDesigner application. Please refer to the Formulation-Master 2001 or X-RiteColor Master specifications to determine the system requirements for that package.

To install the software application:

1. Insert the CD into your drive. The install program starts automatically. If it doesn't start automatically, double-click the **setup.exe** file located on the CD.
2. Follow the installation instructions on your computer screen.

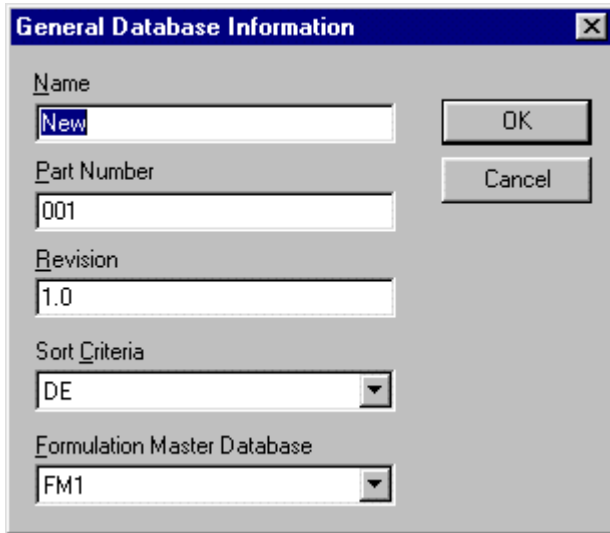
Starting The Software

After CDDB is installed, you can start the program by double-clicking the program icon in the appropriate group folder.



Creating A Project

You must create a project (database) or open an existing one when the application is started. Click the **New Project** button on the main screen of the application to access the **General Database Information** dialog.



The screenshot shows a dialog box titled "General Database Information". It has a blue title bar with a close button (X). The dialog contains the following fields and controls:

- Name:** A text input field containing "New".
- Part Number:** A text input field containing "001".
- Revision:** A text input field containing "1.0".
- Sort Criteria:** A dropdown menu with "DE" selected.
- Formulation Master Database:** A dropdown menu with "FM1" selected.
- Buttons:** "OK" and "Cancel" buttons are located on the right side of the dialog.

To Create A New Project:

1. Enter the name of the customer developed ColorDesigner database in the **Name** field. This is the name that appears in ColorDesigner. Up to 32 characters are allowed.

NOTE: Spaces and symbols are not allowed.

2. Enter a part number (32 characters max.) in the **Part Number** field.
 - The Part number needs to follow this convention:
CF803-1234, CFH803-1234
 - If you are using a 0/45 instrument, the part number is CF. Similarly, if you are using a Sphere instrument, the part number starts with CFH.
 - 803 is a database type and will not change. This indicates that the database is compliant with Formulation-Master™ 2001 and X-RiteColor® Master.

- The final 4 digits need to be unique. Call X-Rite at: 1-800-572-4626 (press option 4) and request a register number. One will be given to you for your database.
3. Enter revision in the **Revision** field (32 characters max.).
 4. Click on the **Sort Criteria** drop-down list and select the desired sort method.
 5. Click on the **Formulation Master Database** drop down-down list and select the desired database.

NOTE: All Formulation Master databases registered on your computer or on a remote server will be displayed.

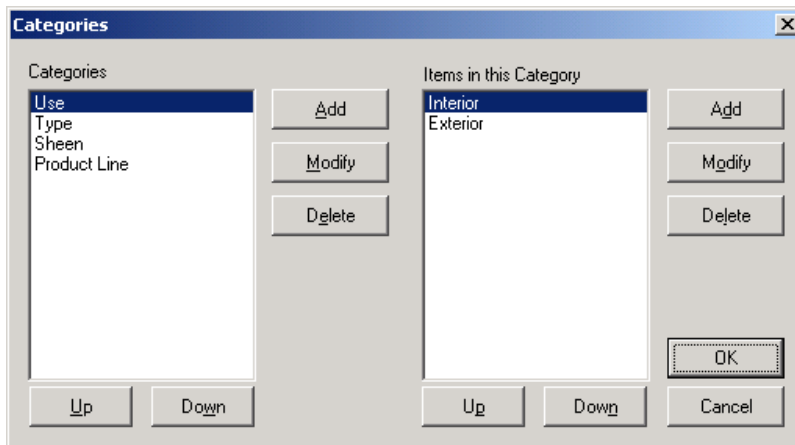
6. Click **OK** when completed. The main screen appears with all menu buttons active.

NOTE: General Database Information dialog can be accessed at any time by selecting the Settings button. All options can be edited, with the exception of the Formulation Database. This option cannot be changed after it is set for a project.

7. Continue with modifying the **Categories, Bases, Can Size, and Formula Displays**.

Categories

The **Categories** function is used to build product categories with selected items. Each category (four maximum) can contain up to 36 items. Click the **Categories** on the main screen of the application to access the **Categories** dialog.



To create/edit categories:

1. To create a new category (four maximum), select the **Add** button in the center of the dialog. To edit an existing category name, select the category from the list and click the **Modify** button in the center of the dialog.
2. Enter or edit the name in the **Item** field. A maximum of 30 characters can be used.
3. Click the **OK** button.

To create/edit items in categories:

1. Select a Category from the Categories list.
2. To create a new item (36 maximum), select the **Add** button on the right side of the dialog. To edit an existing item name, select the item from the Items in this Category list and click the **Modify** button on the right side of the dialog.
3. Enter or edit the name in the **Item** field. A maximum of 30 characters can be used.
4. Click the **OK** button.

To delete a category or item:

1. Select a **Category** or **Item** from the appropriate list.
2. Click the **Delete** button.

NOTES: The product line category cannot be deleted, and one item must be available for each category.
Deleting a category automatically deletes all items within that category.

Adjusting the Category and Items Display Order

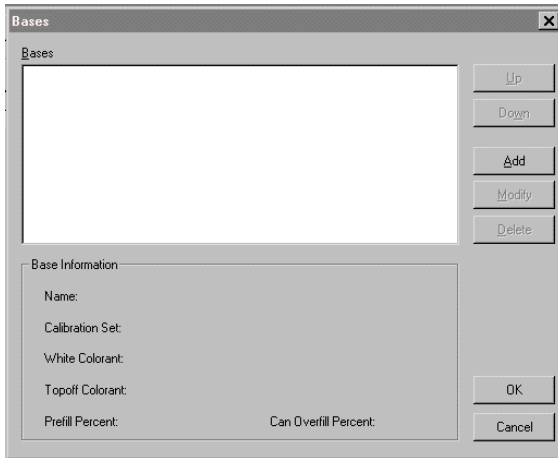
The **Up** and **Down** buttons are used to change the display order of the **Category** and **Items** in the lists. The order that is displayed in these lists is the same order that appears in the ColorDesigner application menu tree.

To adjust the display order:

1. Select a **Category** or **Item** from the list and click the **Up** button to move it up one position, or select the **Down** button to move it down one position.

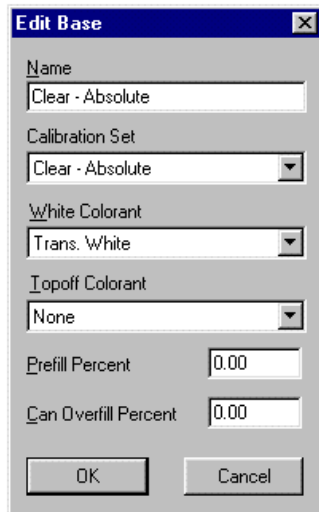
Bases

The **Bases** function is used to add, modify, or delete bases in CDDB. Click the **Bases** button on the main screen of the application to access the **Bases** dialog.



To add/edit a base:

1. Select the **Add** button in the **Bases** dialog to add a base. To modify an existing base, click on the base in the list and then select the **Modify** button. The **Edit Base** dialog shown below should appear.



2. Enter or edit the name in the name field. A maximum of 30-characters can be used (You cannot enter two bases with the same name and do not include parenthesis).

NOTE: The Calibration Set field displays the name of the paint database that was selected when the project was created.

3. Select a **White Colorant**. You can choose one of the available colorants. For a base containing white, any colorant can be selected as the white colorant.
4. Select a **Topoff Colorant**. You can choose one of the available colorants or **None**.
5. Enter the **Prefill Percent**. The prefill percent must be between 0 and 100 percent inclusive.
6. Enter the **Overfill Percent**. The **Overfill Percent** must be between the prefill percent and 150 inclusive.
7. Click the **OK** button.

NOTE: You can enter up to 200 bases maximum and must have a minimum of one base.

To Delete a base:

1. Select the **Base** from the list.
2. Click the **Delete** button.

NOTE: If you delete all the bases, you cannot create new products or modify existing ones. Any products that had been previously created and had bases deleted will display the word "**Undefined**" in the appropriate row in the grid on the main dialog. At that point, the database cannot be deployed. Any products with undefined items must be edited and fixed before deployment is possible.

Adjusting the base Display Order

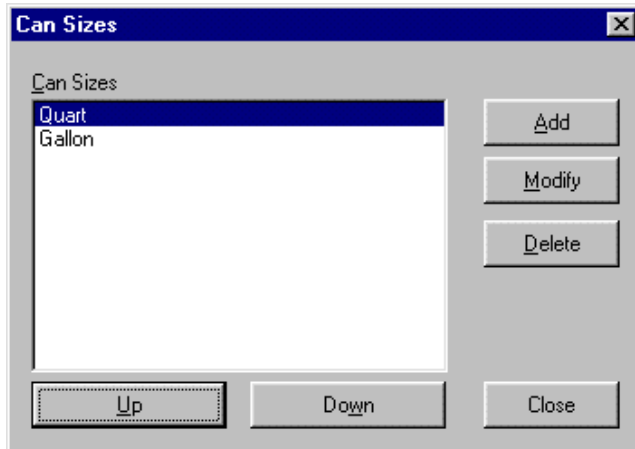
The **Up** and **Down** buttons are used to change the display order of the **Bases** in the lists. The order that is displayed in these lists is the same order that appears in the ColorDesigner application menu tree.

To adjust the display order:

1. Select a **Base** from the list and click the **Up** button to move it up one position, or select the **Down** button to move it down one position.

Can Sizes

The **Can Size** function is used to add, modify, or delete can sizes. Click the **Can Size** button on the main screen of the application to access the **Can Size** dialog. “**Quart**” and “**Gallon**” always appear as the default sizes.



To add/modify the Can Size:

1. To add a new can size, select the **Add** button. To modify an existing can size, select the can size from the list and click the **Modify** button.
2. Add or enter a **Can Size** description in the **Can Size** field. A maximum of 30 characters may be used.
3. Select either **Fluid ounces** or **ml** from the **Units** list and enter the corresponding amount in the **Amount** field (e.g. 1 gallon = 128 oz.).
4. Click the **OK** button.

To delete a can size:

1. Select the can size from the list.
2. Click the **Delete** button.

NOTE: If you delete all the can sizes, you cannot create new products or modify existing ones. Any products that were previously created and their can sizes have been deleted will display the word “**Undefined**” in the appropriate row in the grid on the main dialog. At that point, the database cannot be deployed. Any products with undefined items must be edited and fixed before deployment is possible.

Adjusting the Can Size Display Order

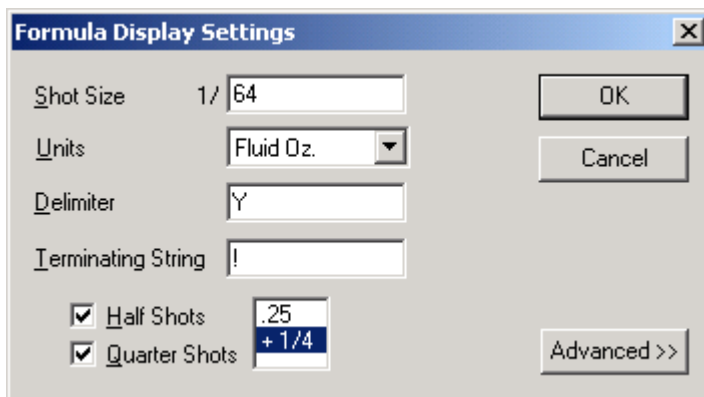
The **Up** and **Down** buttons are used to change the display order of the **Can Sizes** in the lists. The order that is displayed in these lists is the same order that appears in the Edit Product screen when adding/modifying a product in the Can Size dropdown list.

To adjust the display order:

1. Select a **Can Size** from the list and click the **Up** button to move it up one position, or select the **Down** button to move it down one position.

The Formula Display Dialogs

The **Formula Display** dialog allows you to specify how the formulas will be displayed in CDDDB. Click the **Formula Display** button on the main screen of the application to access the **Formula Display Settings** dialog.



To create Formula Display settings:

1. Enter a **Shot Size** that must be an integer number greater than zero and a maximum of 10 characters long.
2. Select either **Fluid Oz** or **ml** in the Units dropdown list.
3. Enter a required **Delimiter** which is limited to twenty characters maximum.
4. Enter an optional **Terminating String** which is limited to twenty characters maximum.
5. Select **Half Shots**, **Quarter Shots** or both by checking the appropriate box. If you choose **Quarter Shots**, select decimal or fractional configuration for display in the dialog.

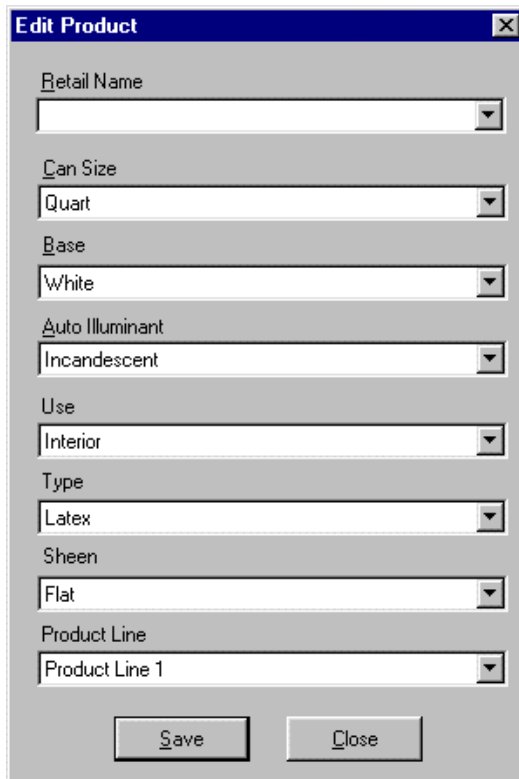
NOTE: If you select Quarter Shots, Half Shots are automatically turned on. If you do not select Quarter Shots, then Half Shots can be turned on or off. Both Half and Quarter Shots can be turned off.

The **Advanced Formula Display Settings** should only be accessed and modified with the assistance of X-Rite's Application Support personnel. The parameters contained in the dialog are highly specialized and only require modification in certain circumstances.

Adding Products to the Grid

Once you have entered categories, bases, can sizes, and formula display settings, you can now build products in the grid on the main screen. Click the **Add** button on the main screen of the application to access the **Edit Product** dialog.

NOTE: The number of items that appear and their sequence depends on the number of categories created and the order chosen. The product line option is one item that will always appear.



The screenshot shows the 'Edit Product' dialog box with the following fields and values:

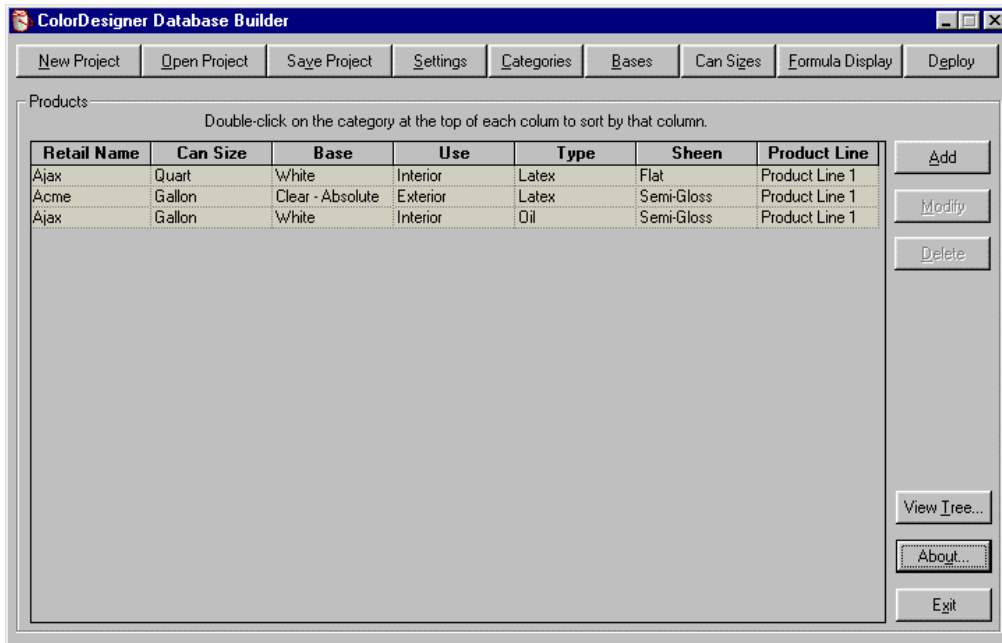
- Retail Name: [Empty]
- Can Size: Quart
- Base: White
- Auto Illuminant: Incandescent
- Use: Interior
- Type: Latex
- Sheen: Flat
- Product Line: Product Line 1

Buttons: Save, Close

To Add Products:

1. Enter or select a name in the **Retail Name** field.
2. Select a **Can Size**, **Base**, **Auto Illuminant**, **Use**, **Type**, **Sheen**, and **Product Line** from the appropriate list.
3. Click **Save** when finished. The dialog does not close at this point. This allows you to add additional products.

4. When all desired products are entered, click the **Close** button to close the dialog. The created products appear in a grid on the main screen.



To Modify a Product:

1. Select a product from the grid and click the **Modify** button.
2. Edit product item and click **Save**.

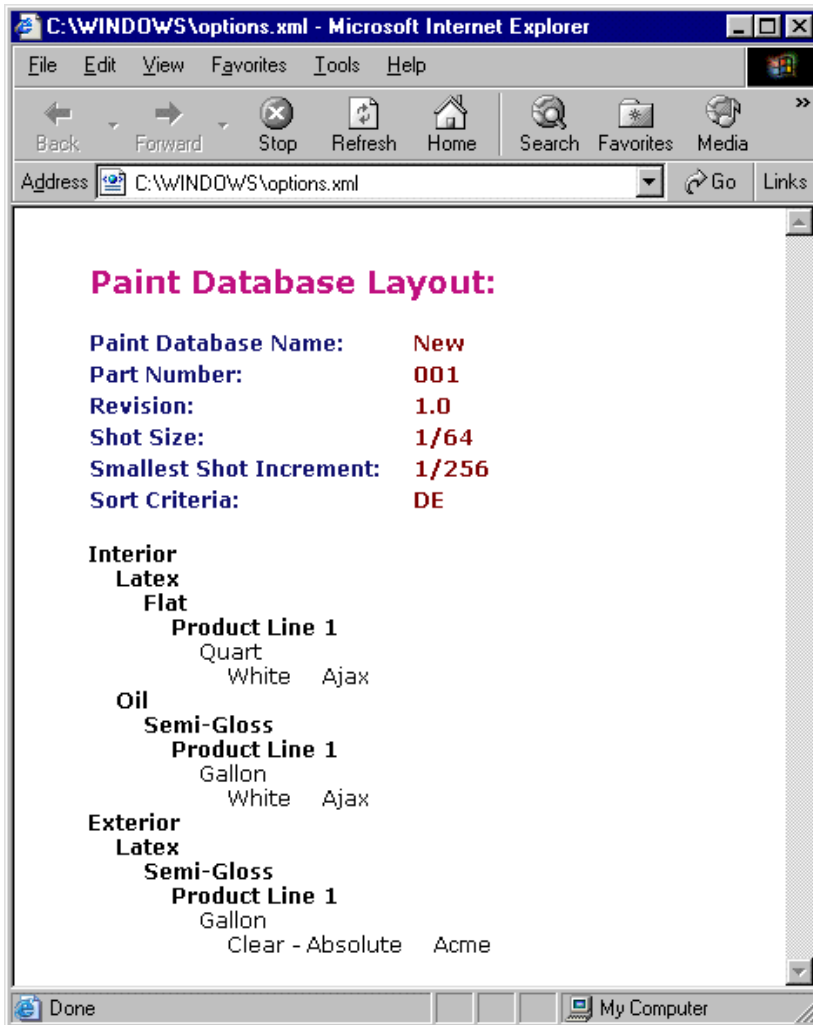
NOTE: If the Auto Illuminant selected is modified, all product sets that share the same Categories will also be effected.

To Delete a product:

1. Select a product from the grid and click the **Delete** button.

Viewing Data

The **Paint Database Layout** screen allows you to view data as it will appear in ColorDesigner. This screen is used strictly for viewing. You must edit the products in the **Categories** dialog to rearrange the display order. Click **View Tree** on the main screen to access the **Paint Database Layout** screen.



Saving a Project

After the project is created and you are satisfied with the way it appears in the main screen grid, you can save the file.

To Save a Project:

1. Click the **Save Project** button on the main screen.
2. If required, browse to the appropriate directory and enter the project name in the **Name** field.

NOTE: The project file has a “**prj**” extension, and the default filename is the database name as specified in the settings dialog (not the Formulation database name but the ColorDesigner database name).

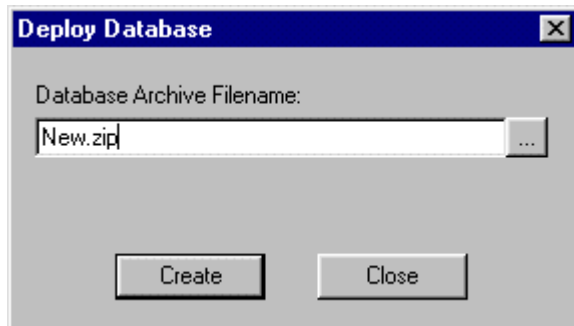
3. Click **Save** to save the project.

Deploying a Project

The **Deploy** function is used to create a Zip file that ColorDesigner can import for a database.

To Deploy a Database:

1. If a stored project is to be deployed, click the **Open Project** button and select the project.
2. Click the **Deploy** button on the main screen of the application. The **Deploy Database** dialog will appear.



NOTE: The utility will not deploy a project unless at least one product has been defined and none of the fields within that product are **“Undefined”**.

3. Enter a new file name or select an existing name using the browse (...) button.
4. Click **Create**. The utility will go through the series of steps to generate the zipped database.

Technical Support

X-Rite's commitment to quality does not end with your product purchase. We stand behind your system with a strong commitment to customer service. Our customer service departments are fully staffed with qualified technicians to assist you via phone or fax. When placing a call, please have the following information close at hand:

- Your software version number
- Your name and company name
- Your telephone number
- If the problem you are experiencing caused an error message, write the message down
- Also, write down the steps you were performing before the problem occurred
- Have the software running within reach of the telephone

For Assistance, Contact your X-Rite Authorized Representative or Match-Rite Customer Service at:

Tel: 1-800-572-4626

Fax: 1-978-952-2797



X-Rite, Incorporated - World Headquarters

3100 44th Street S.W. • Grandville, Michigan 49418 • USA
www.x-rite.com • (616) 534-7663

Match-Rite Numbers

Tel: 1-800-572-4626 • Fax: 1-978-952-2797

X-Rite GmbH

Stollwerckstraße 32 • 51149 Köln • Germany

Tel: (49) 2203-91450 • Fax: (49) 2203-914519

X-Rite GmbH

Sochorova 705 • CZ-682 • 11 Vyskov • Czech Republic

Tel: (420) 507-328197 • Fax: (420) 507-328138

X-Rite Asia Pacific Ltd.

Room 808-10 • Kornhill Metro Tower • 1 Kornhill Road • Quarry Bay
Hong Kong • Tel: (852) 2-568-6283 • Fax: (852) 2-885-8610

X-Rite Ltd.

The Acumen Centre • First Avenue

Poynton, Cheshire • England

Tel: 44-0-1625-871100 • Fax: 44-0-1625-871444

X-Rite Méditerranée

Parc du moulin de Massy • 35, rue du Saule Trapu • 91300 Massy • France

Tel: 33-1-69.53.66.20 • FAX 33-1-69.53.00.52

X-Rite Asia Pacific Ltd. - Japan Office

7F, IMAS Hamamatsu-cho Bldg. • 2-10-4, Hamamatsu-cho

Minato-ku, Tokyo • 105-0013 Japan

Tel: +81-3-5777-5488 • Fax: +81-3-5777-5489

X-Rite Asia Pacific Ltd. - Singapore Representative Office

14 Science Park Drive • #02-04 The Maxwell

Singapore Science Park • Singapore 118226

Tel: + 65 7788-773 • Fax: + 65 7788-645