

X-Rite InkFormulation 6

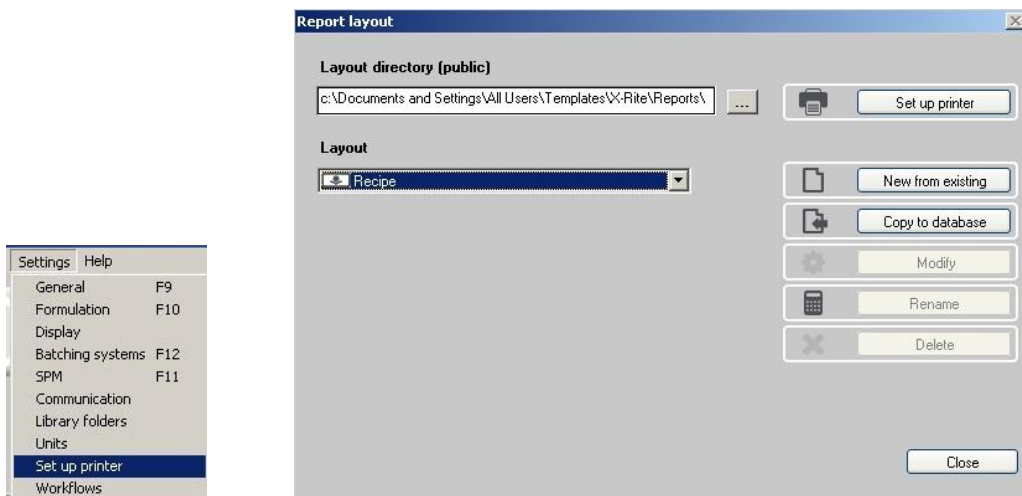
Application Notes: Print Layout Editor

InkFormulation offers users the ability to customize individual print layouts using the new user-defined Print Layout Editor. This gives users the flexibility to customize their print layouts using logos, bar codes and labels, which can be inserted and printed to label ink cans and simplify inventory creation.

How to edit a Print Layout with NC Report Designer Software (included)

NC Report Designer (NCRD) is an additional program that comes with InkFormulation. NCRD can be launched from within the InkFormulation software directly.

From the “Settings” menu, select “Setup Printer”. A new dialog box appears.



From here the user can adjust several settings:

- 1) Set up the printer

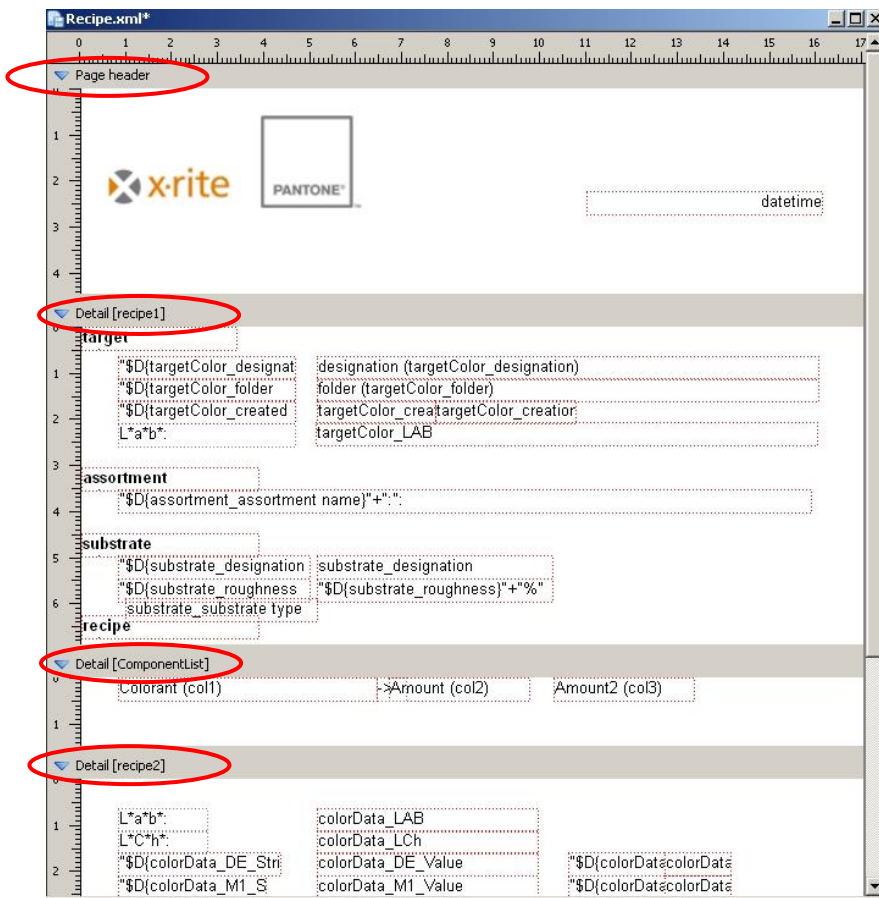
Click on “Set up printer” in order to display the system window for the printer setup. Depending on the printer being used, you may have the opportunity to select layout options such as landscape or portrait, paper size and paper feed.

2) Create a new layout

To create a new print layout click on “New from existing”, or to modify an existing one, please select one and click “Modify”. After defining a designation, NCRD is opened and the selected layout is displayed.

3) Copy a layout to the database

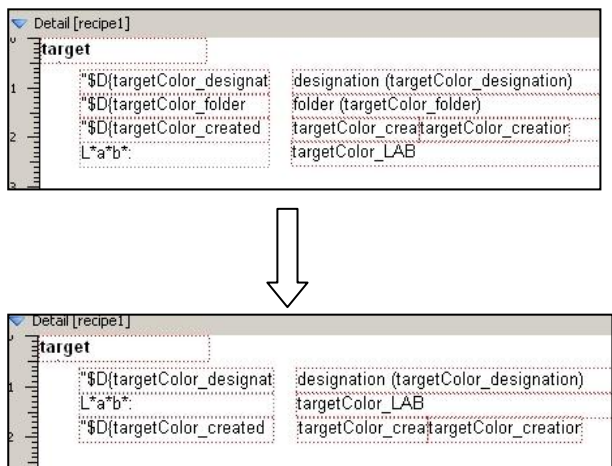
4) Modify/rename and delete existing layouts



As shown in the picture above, the layout is split into sections outlining different details:

- 1) Page Header
- 2) Recipe 1
- 3) Component List
- 4) Recipe 2
- 5) Graph
- 6) Additional Data
- 7) Page Footer

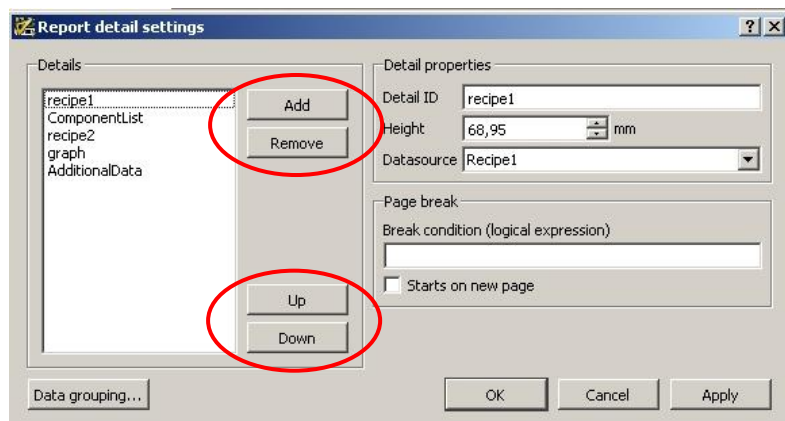
All details can be modified. Data items can be moved via drag & drop as long as they stay in the same sections. You cannot move data across sections.



- Font, size and color can be modified
- Information can be deleted

Note: The borders as outlined by the software should not be altered.

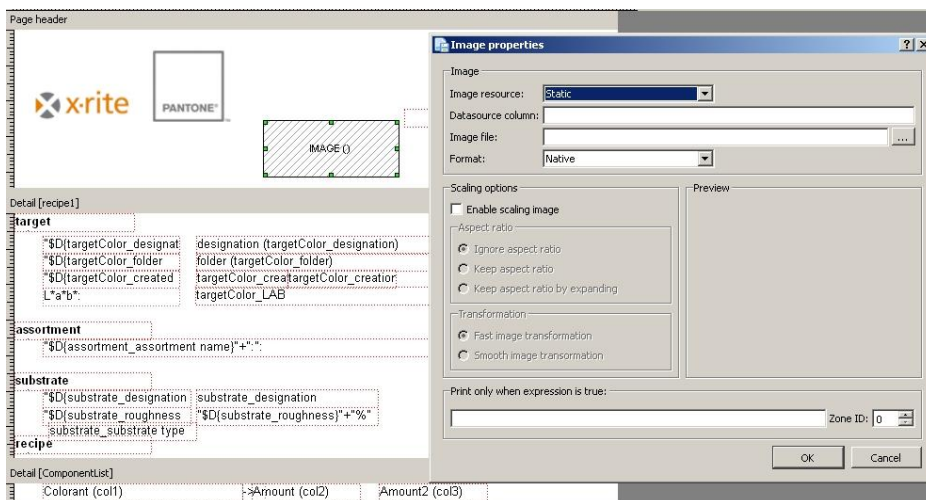
In addition to the single lines and elements, the details can be edited as whole. Choose “Report Detail Settings” from the “Report” menu. You’ll then see the dialog box below. Here you can delete individual details and rearrange the order of the existing sections.



In addition to the configuration of the print-information, you can insert company logos or company specific data. You pick the desired item from the “insert” menu.

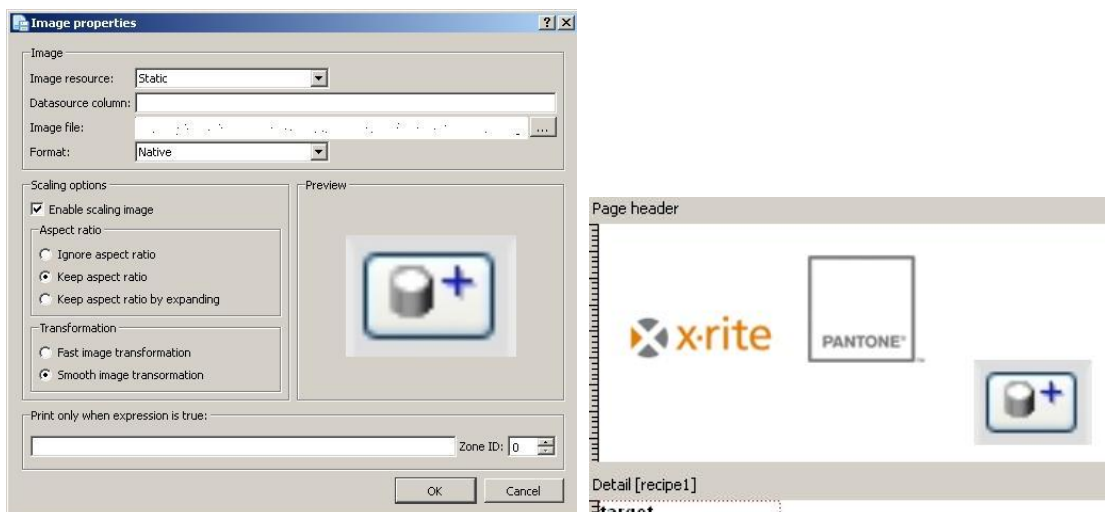
The sections “page header” and “page footer” can be deactivated in the menu “Report” -> “Report and Page settings” in the tab “Section Options”.

Logo insertion



After specifying the desired location on the page, and the image size within the document, the “Image Properties” dialog box will open. Here you can specify the file name of the image.

The image is immediately displayed in the dialog box. Choose “OK” to have it inserted into the layout.

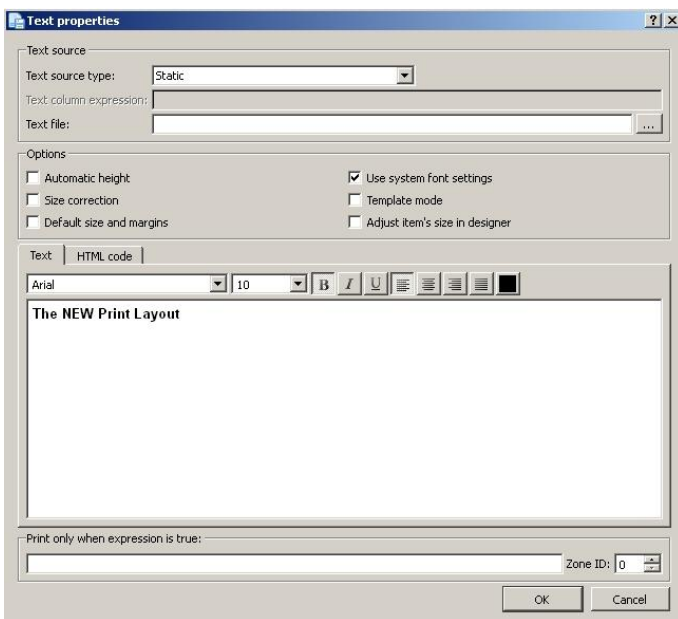


Page Sizing

In the menu you can change the orientation and size of your layout. You can pick one of the pre-defined formats or specify one of your own.

Text Insertion

From the “Insert” menu, choose “Text”. A new dialog box appears where you can type in your desired text. You can also load a separate html file if you choose.

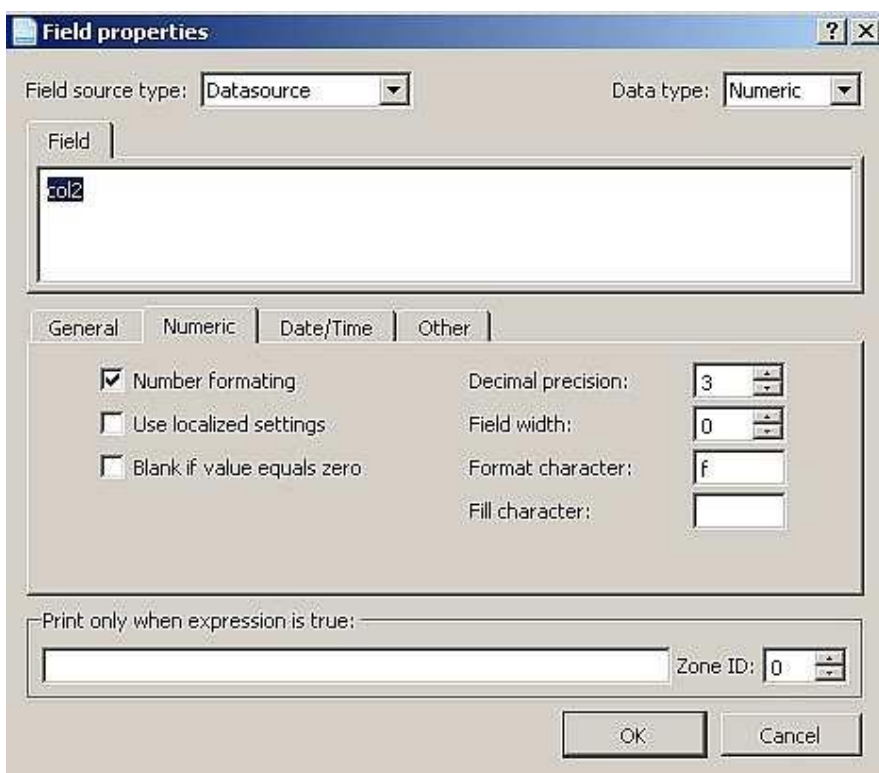


Click “OK” to accept the changes.



Modification of the decimal places in basic and correction recipes:

1. Please open a layout with NC Report Designer
2. Double click in Detail "ComponentList" on "Amount" for basic or on "Amount2" for correction recipe.
3. A new window "Field properties" appears.
4. Select the option "Numeric"
5. On the right side you can define the decimal places.

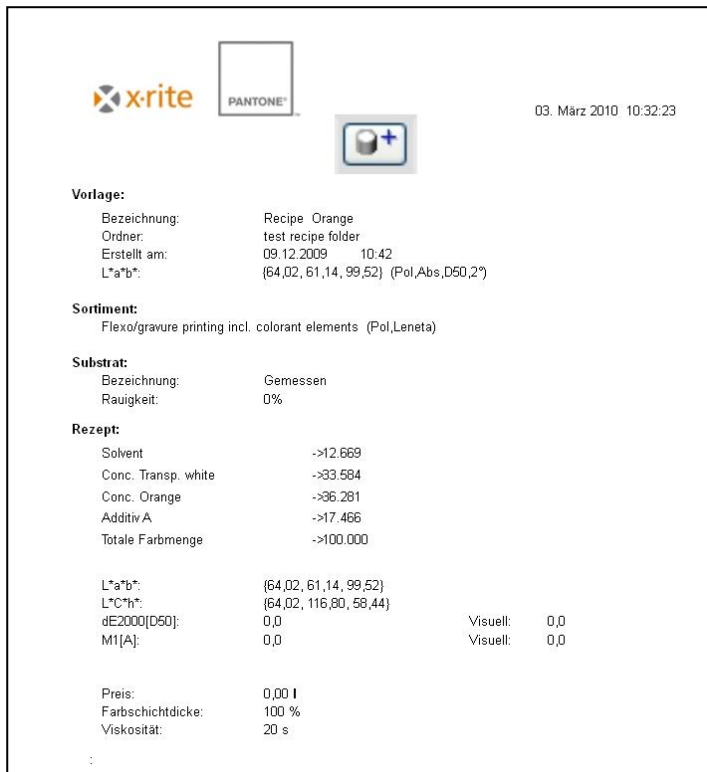
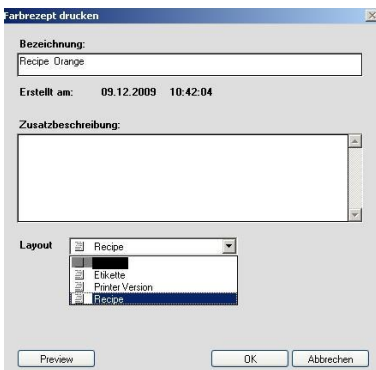


When done, you can preview the draft by pressing ctrl-p. Don't forget to save your changes (public or user-specific).

The new layout is then immediately available in InkFormulation.

Using Your Layouts

You can select only one layout from the "Print" menu at a time. You can verify the selection using the "Preview" feature.



03. März 2010 10:32:23

Vorlage:

Bezeichnung:	Recipe Orange
Ordner:	test recipe folder
Erstellt am:	09.12.2009 10:42
L*a*b*:	{64,02, 61,14, 99,52} (Pol,Abs,D50,2°)

Sortiment:

Flexo/gravure printing incl. colorant elements (Pol,Leneta)

Substrat:

Bezeichnung:	Gemessen
Rauigkeit:	0%

Rezept:

Solvent	->12.669
Conc. Transp. white	->33.584
Conc. Orange	->36.281
Additiv A	->17.466
Totale Farbmenge	->100.000

L*a*b*:	{64,02, 61,14, 99,52}	
L*C*h*:	{64,02, 116,80, 58,44}	
dE2000[D50]:	0,0	Visuell: 0,0
M1[A]:	0,0	Visuell: 0,0

Preis:	0,00 l
Farbschichtdicke:	100 %
Viskosität:	20 s