



# InkFormulation 6.1

Overview of New Features and Enhancements

Version / Date	August 2012
Autor	Claudia Leipert

## Content

1	Introduction .....	3
2	Enhancements .....	3
2.1	CxF Formulation .....	3
2.2	MS Excel Export .....	4
2.3	Support eXact .....	4
2.4	PantoneLive .....	5
3	Enhancements .....	7
3.1	More flexibility in the colorant selection window .....	7
3.2	Formulation with calibrated and non calibrated thickness objects.....	7
3.3	Bug fixing .....	8

# 1 Introduction

The following overview refers to enhancements and improvements of InkFormulation 6.1, compared with version 6.02.

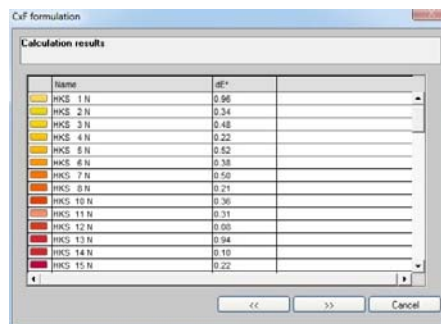
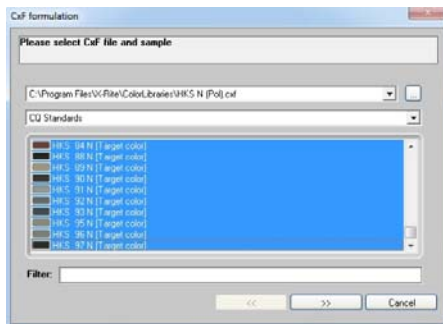
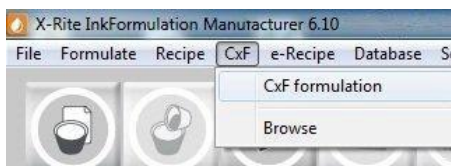
## 2 Enhancements

### 2.1 CxF Formulation

With version 6.1 a whole color library can be formulated in only one formulation workflow. The user chooses the assortment, the substrate and the ink film thickness and the whole library gets calculated.

In only a few steps the user gets a statistical overview, if the standards are good reproducible or out of the color gamut.

Color libraries are the digital color guides from HKS and Pantone. It also can be customized data.



Further information you will see on the Application Notes of CxF Formulation.

## 2.2 MS Excel Export

In previous version the user had copied single recipe to Microsoft Excel. With version 6.1 you can export multiple recipes in one click.

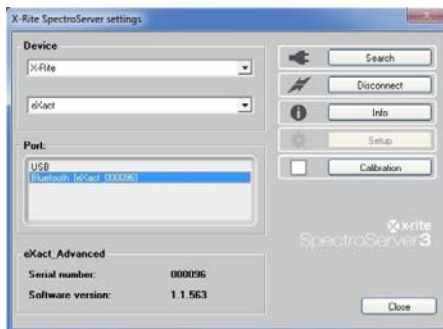
In the recipe database you highlight the desired recipes and click on export and save as .csv file. The recipes are listed in print ready ink mode below each other.

	A	B	C	D
1				
2	PANTONE 100 C (2)			
3	Yellow 1F510		28,399	
4	tw		71,601	
5			100	
6				
7	PANTONE 101 C (2)			
8	Yellow 1F510		38,3644	
9	tw		61,6356	
10			100	

## 2.3 Support eXact

InkFormulation 6.1 supports the new measurement device eXact from X-Rite. The eXact you can connect via USB and Bluetooth to the InkFormulation Standalone and Online. The kind of connection is similar to SpectroEye.

For further information please have a look to the eXact instruction.



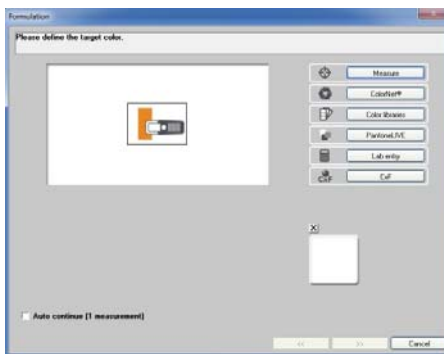
## 2.4 PantoneLive

In InkFormulation 6.1 PantoneLive can be activated via password.

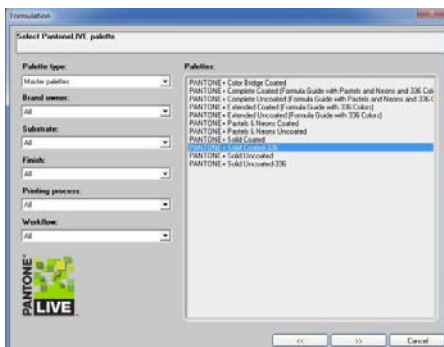
In the **Settings** → **PantoneLIVE** you enter the login data to get directly access to the Pantone Server.



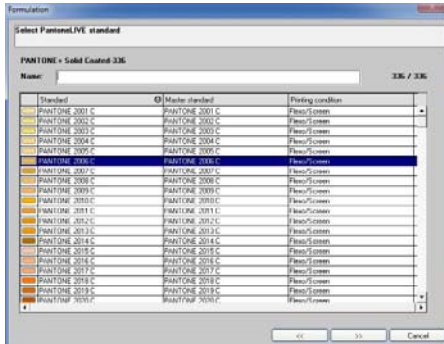
The formulation window “Defining a target color” has a new button now: PantoneLIVE.



Click on the button „PantoneLive“ to get connection to the server. Corresponding to the selected palette type, different palettes are displayed in the box on the right side. With several filters like printing process or substrate you can limit the palettes.



Highlighting the standard and continue the workflow. The target from the server is downloaded to your database and will be available for the next 30days.



Further information you will see on Application Notes of PantoneLive.

### 3 Enhancements

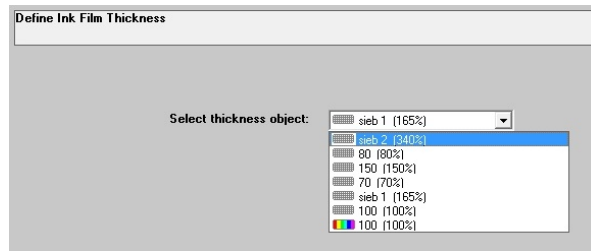
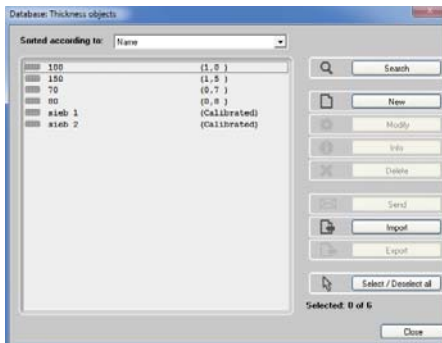
#### 3.1 More flexibility in the colorant selection window

In version 6 is a new configuration of the window “colorant selection”: all colorants are preselected, ink leftovers are not anymore preselected but available. With version 6.1 it is more flexible.

If you want to modify the configuration, please contact our support team to get the detailed instructions.

#### 3.2 Formulation with calibrated and non calibrated thickness objects

With version 6.1 the user can formulate with calibrated and non-calibrated thickness objects in one assortment. This provided that an ink film thickness was assigned to the assortment.



### **3.3 Bug fixing**

The following bugs are fixed:

1. Batch processing with applications
2. Export and Import of thickness objects without losing values
3. The link from palette recipes and thickness objects will be available even after deleting the assortment and re-importing.
4. Option to print out additional description
5. Option to print out recipes with ink leftover. Now the symbol of the ink leftover is available.
6. Option to print out more than one recipe from recipe database works well.
7. Improved stability and performance.