

ColorCert Printing Conditions

Version History

- August 7th 2015 - Version 1.0
- March 31st 2017 - Version 1.1 (Updated support links)

Scope

This document describes the definition and usage of multiple Printing Conditions in a Color Cert Job.

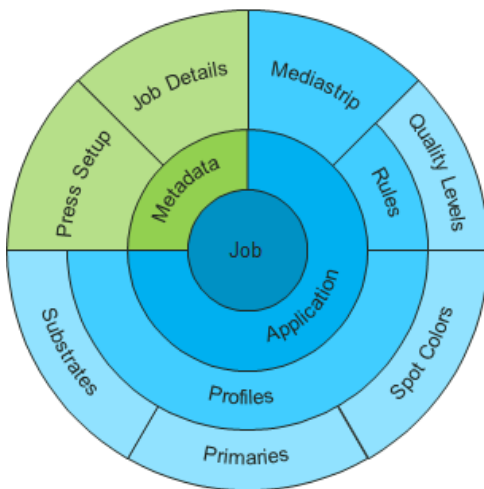
Solution Summary

Printing Conditions describe the different printed results (white point, dot gain or ink color) based on different substrate, different ink properties, or different press parameters etc. The same print tools can produce different printed results.

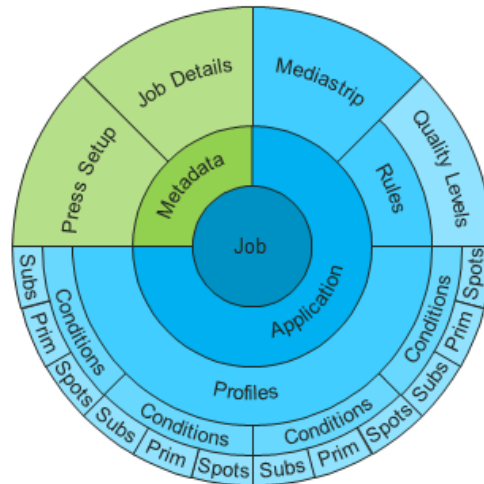
ColorCert introduces the feature **Printing Condition** (In the ColorCert Desktop Solution further known as **Conditions**) as a workflow that allows the press operator to measure a printed result against the targets of multiple, different conditions. This is helpful as it allows the user to adjust a printed result to a temporary condition, like a cheaper substrate during press make ready for example or a different production step like unlaminated or laminated, wet or dry, with or without varnish

Conditions are introduced as additional layer in **ColorCert Profiles**. There can be up to four different Conditions defined in a ColorCert Profile.

Job Structure with one Condition:



Job Structure with four Conditions:



Requirements

- ColorCert Manager 2.6 to create ColorCert Profiles with multiple Conditions
- ColorCert Pressroom Client 2.6 or Pressroom Essentials Client 2.6 to use Jobs with multiple Conditions
- Useful samples and information from the ColorCert support website <http://www.xrite.com/service-support/product-support/formulation-and-qc-software/colorcert-desktop-tools>
 - Color Basics for Pressroom (Rev. B) (physical sample sheet in the eXact box)
 - ColorCert Color Basics Sample Data
 - ColorCert Startup and Configuration Guide

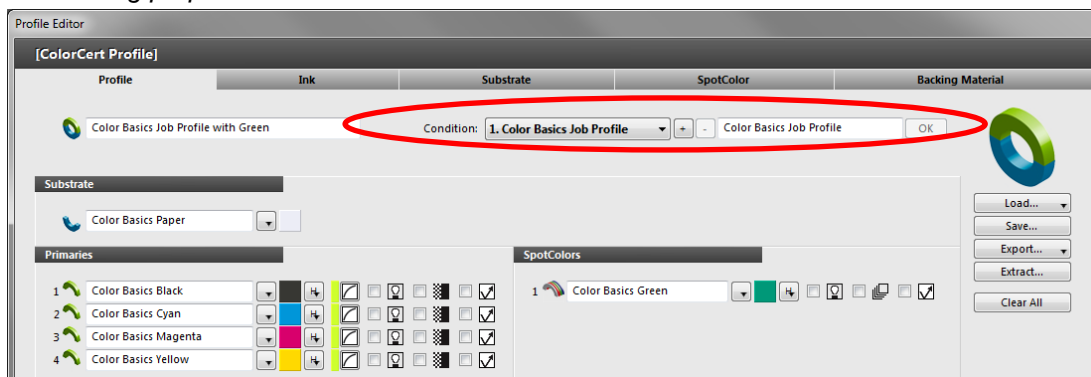
Defining multiple Conditions in a Profile

This can be done with the ColorCert Manager.

Add a Condition to a ColorCert Profile

1. In the **ColorCert Chooser** select **Editors** and then select **Profile Editor**
2. Load or create a **ColorCert Profile** as usual. The target colors and settings used in this profile automatically become your first printing Condition.

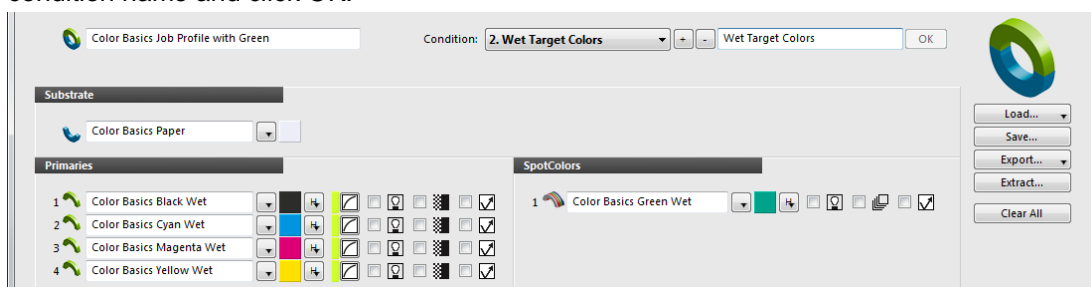
*For training purposes select **Color Basics Job Profile with Green**.*



3. The name of your first Condition is automatically the Profile name. To differentiate the Condition from others you can enter a suitable name in the box right to the **Condition** drop down menu and click **OK**.



4. Click **+** to **add** another Condition layer to the Profile. This layer is a copy of the first Condition. Adjust the Substrate, Primaries, Spotcolors and Dotgain according to your needs. Enter a condition name and click **OK**.



Note: Make sure you use

- the same number of **Primaries** and **Spotcolors**
 - same **Spotcolor** build settings,
 - same **Measurement Conditions**,
 - same **it8/CGATS** chart layout.
5. You can now use the Drop Down list to change between the **Conditions**

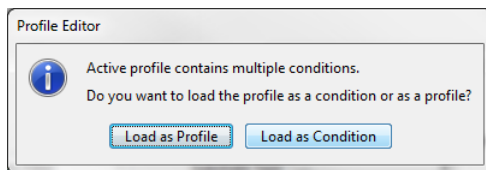


6. Click **Save Profile**, rename it if necessary.
7. Create your Job as usual and **Save** it

Load a previously defined Profile or Condition to your active Profile

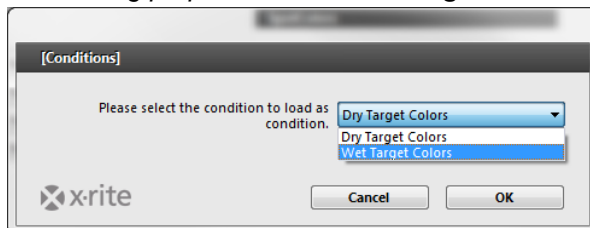
To Load your target Colors into your new Condition you can also load a **ColorCert Profile** or an **ICC** profile or **IT8/CGATS** chart into the new Condition.

1. In a ColorCert Profile where you have just added a new Condition click **Load**.
 - For training purposes select **Load ColorCert Profile**.
 - Select **Color Basics Job Profile with Conditions**.
2. A message asks you whether you want to replace the active Profile or load the Profile as a Condition. Click **Load as Condition**.



3. If the Profile you are loading contains multiple Conditions (Only ColorCert Profiles can have multiple Conditions, icc profiles or it8 charts don't) then you are asked to select the desired Condition from a drop down list.

For training purposes select **Wet Target Colors**.



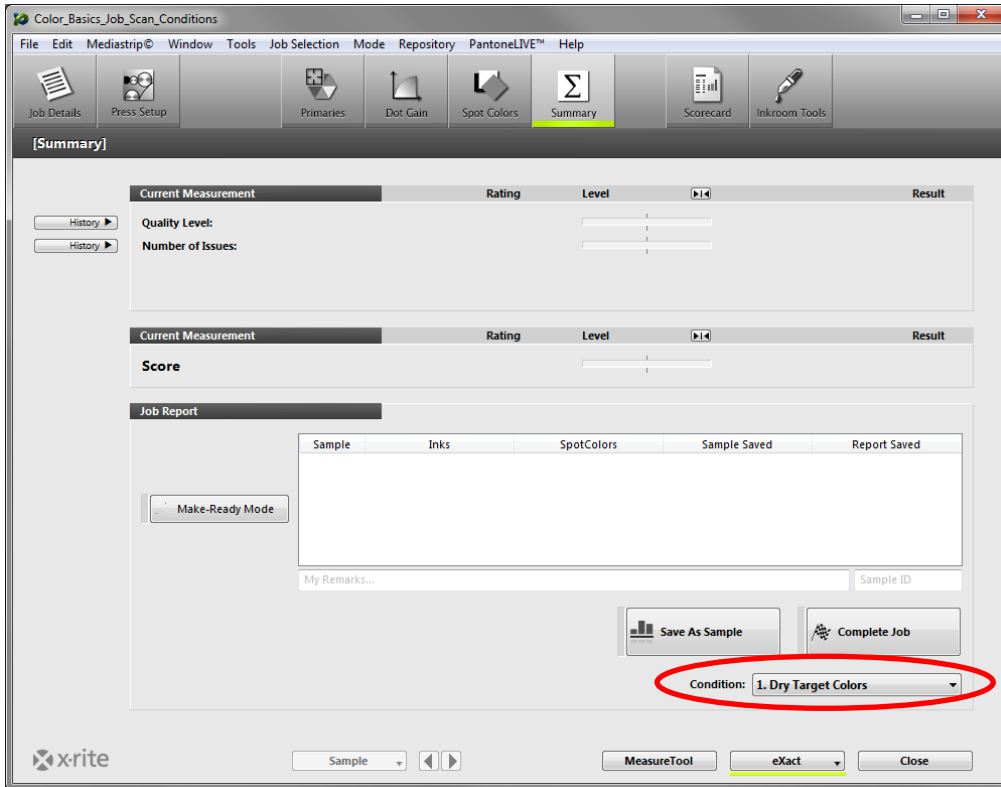
Make sure you only use Profiles or Conditions with

- the same number of **Primaries** and **Spotcolors**
 - same **Spotcolor** build settings,
 - same **Measurement Conditions**
 - same **it8/CGATS** chart layout.
4. Click **OK**.
 5. The selected Profile or Condition is now loaded into your active Profile as a new Condition. Rename it if necessary.
 6. Click **Save Profile**, rename it if necessary.
 7. Create your Job as usual and **Save** it.

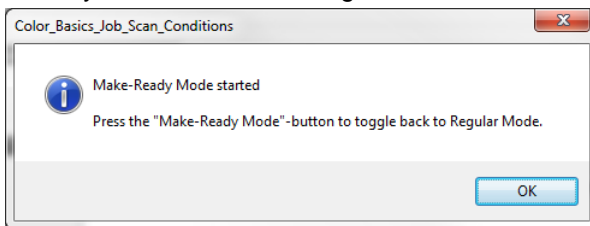
Use a ColorCert Job with multiple Conditions

This can be done with the ColorCert Pressroom Client, the ColorCert Pressroom Essential Client as well as the ColorCert Manager.

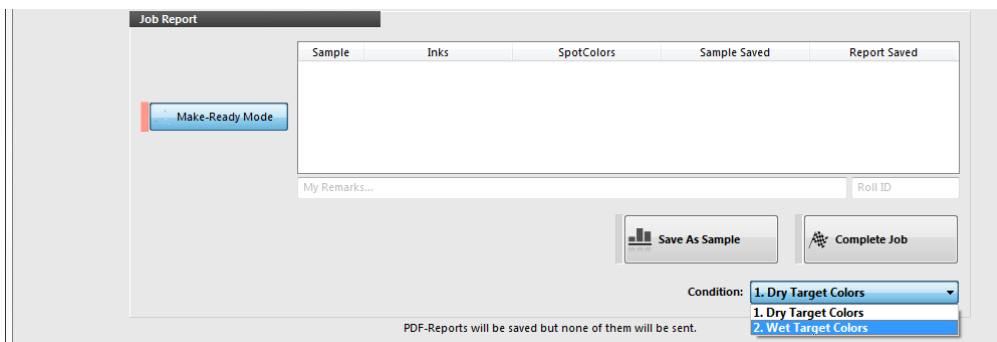
1. Load the **ColorCert Job** as usual. Under the Summary tab the first Condition is selected by default.



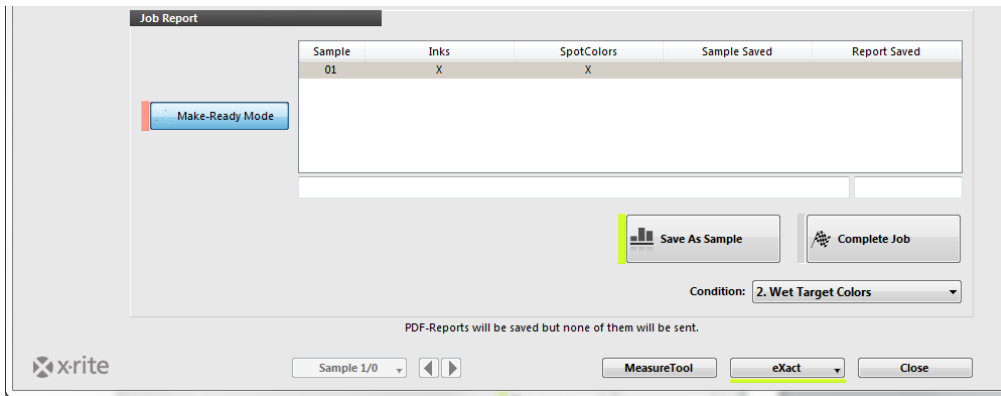
2. Click on **Make-Ready Mode**. In this Mode you can change the Condition at any time to allow to check your measurements against the different targets.



3. Use the drop down to select the **Condition** that matches the current condition you want to measure.



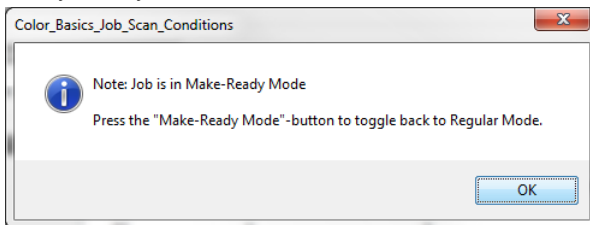
4. **Measure** as usual against the active condition.



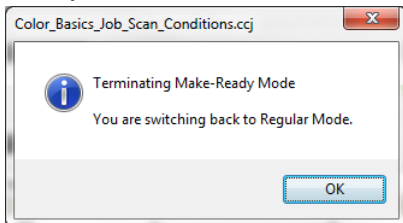
5. Click **Save as a Sample**.

As long as you are in Make-Ready Mode you can **switch Conditions** as desired while keeping the measurements.

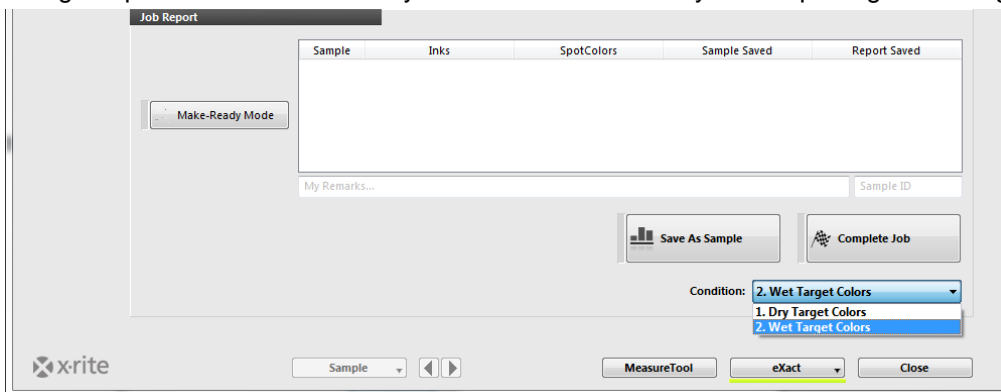
6. Continue **Measuring** and **Saving**. While you are still in Make-Ready Mode you get a notification every time you Save a Measurement.



7. When you are ready for the regular production, click **Make-Ready Mode** again to leave the Make-Ready Mode.



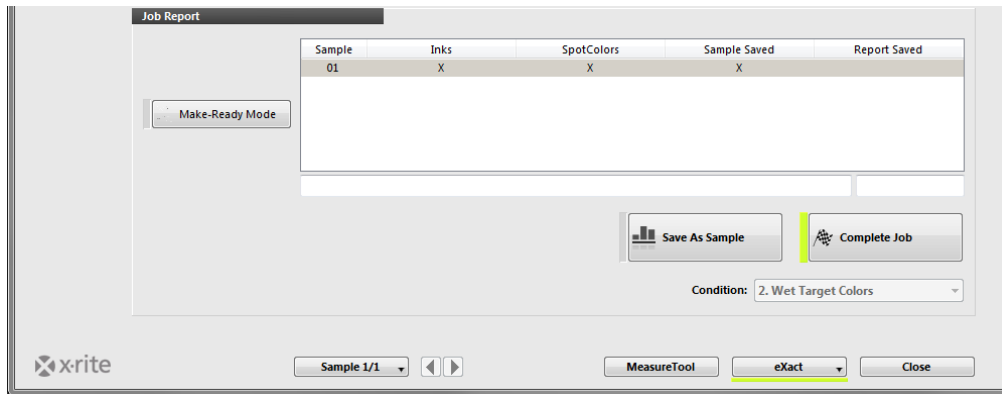
The Make-Ready Mode button is not highlighted red anymore and all sample measured in Make-Ready Mode disappear from the Job Report Window. These Measurements are hidden while you are in regular production Mode as they are not collected for any Job Reporting or Scoring.



8. Select the **Condition** you want to use in the Regular Mode.

9. **Measure** as usual.

10. As soon as you save this first Measurement after leaving the Make-ready Mode the Condition is fixed and cannot be changed anymore. The **Condition** drop down is greyed out.



11. Continue **Measuring** and **Saving**.

At any time you can always click Make-Ready Mode again to view the Make-Ready measurements or take more measurement in Make-Ready Mode for example after an interruption on press. In Make-Ready Mode you can switch between the Conditions again.

As soon as you leave the Make-ready Mode the Condition will revert back to the previously fixed Condition of this job.

A typical use case

Start Job in Make Ready. Measure against your Wet Target Colors (evaluated during a press test). When you reached them, save a sample and wait till its dry. Measure this Sample against the Dry Target Colors (Your customers wish).

If they are ok as well, then you have proven that your wet print sample will become an acceptable dry print sample.

If not continue adjusting and always capture a wet and a dry measurement of the sample till the dry sample match the Dry Targets Colors. Use the matching wet measurement with the **Sample to Target** functionality to create new Wet Target Colors.

NOTE: Sample to Target is only available if allowed in the Rules of the Job (Setting 4 -> Dynamic Target Adjustment).