

ColorCert Job Setup Wizard

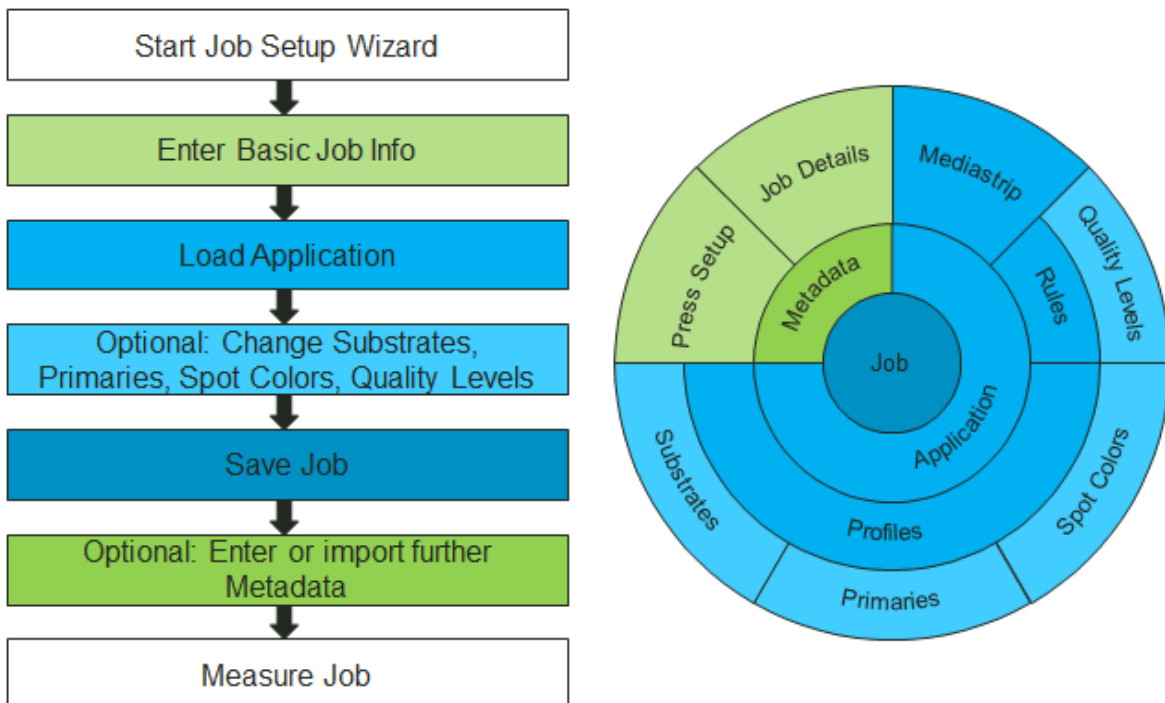
Version History

- August 7th 2015 - Version 1.0
- March 31st 2017 - Version 1.1 (Updated support links)

Scope

This document describes the initial setup and usage of the Job Setup Wizard Functionality in ColorCert.

Solution Summary



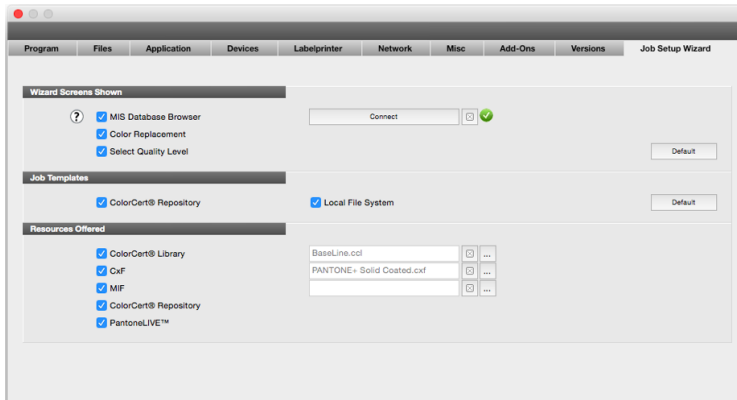
Requirements

- ColorCert Pressroom Client 2.6 (not available with Pressroom Essentials Client)
- Predefined ColorCert Applications made with ColorCert Manager
- Useful samples and information from the ColorCert support website
<http://www.xrite.com/service-support/product-support/formulation-and-qc-software/colorcert-desktop-tools>
 - Color Basics for Pressroom (Rev. B) (physical sample sheet in the eXact box)
 - ColorCert Color Basics Sample Data
 - ColorCert Startup and Configuration Guide

Initial Setup

This needs to be done in any ColorCert Desktop Solution that uses this Feature.

1. Start **ColorCert** and open **Preferences** and select the **Job Setup Wizard** tab.

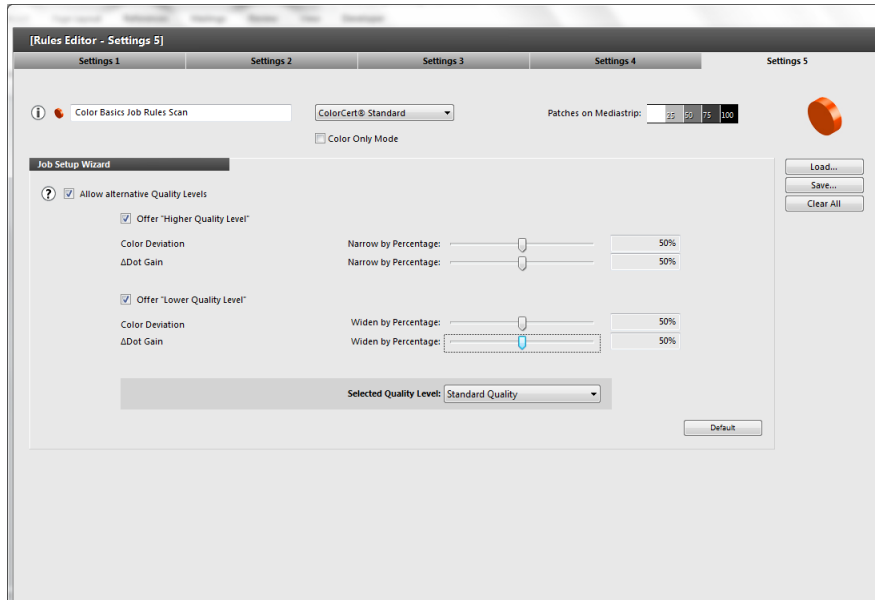


2. Select the checkboxes under **Wizard Screens Shown** to enable more or less possibilities for the Operator to review.
 - **MIS Database Browser**
Offer database browser window to select job details from a connected MIS database. Click Connect to setup your connection. Please refer to separate document for setup instructions.
 - **Color Replacement**
Enable the operator to replace an individual color or substrate.
 - **Select Quality Level**
Enable the operator to select the appropriate quality level (if used in ColorCert Rules).
3. Select the checkboxes under **Job Templates** to enable or disable the access for the Operator to select the source of the application files.
 - **ColorCert® Repository**
Offer the operator to select an Application from the connected ColorCert® Repository Server.
 - **Local File System**
Offer the operator to select an Application from the local file system (e.g. file server).
4. Select the checkboxes under **Resources offered** to allow specific resources for the operator to choose from.
 - **ColorCert® Library / CxF / MIF**
Offers the selection of colors or substrates from a library.
NOTE: Assets must be located in these designated directories defined in the ColorCert Preferences under the Files tab.
ColorCert library -> **cc_library**
CxF -> **import_cxf**
MIF -> **import_mif**
Optional: Enter a specific file name to prevent browsing.
 - **ColorCert® Repository Server**
Offer the selection of colors or substrates from the ColorCert Repository Server.
 - **PantoneLIVE™**
Offer the selection of colors or substrates from PantoneLIVE Palette.

Define different Quality Levels in the Rules

This can be done with the ColorCert Manager.

1. In the **ColorCert Chooser** select **Editors** and then select **Rules Editor**.
2. Define your Rules in **Settings 1-4** as usual or click **Load** to load the Rules you want to amend.
3. Select the **Settings 5 Tab**.

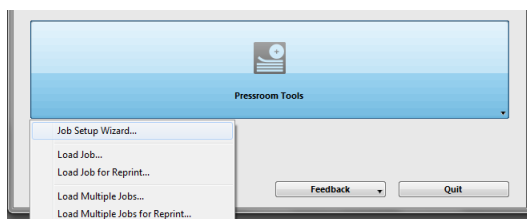


4. Select **Allow alternative Quality Levels** and select the required option to narrow or widen any tolerances set in the Rules with a percentage level.
5. Click **Save**.
6. In the **ColorCert Chooser** select **Editors** and then select **Job, Application, Mediastrip**.
7. **Load** an **Application** you want to amend or load **Profile** and **Rules** as usual and click **Application** and select **Save Application**.

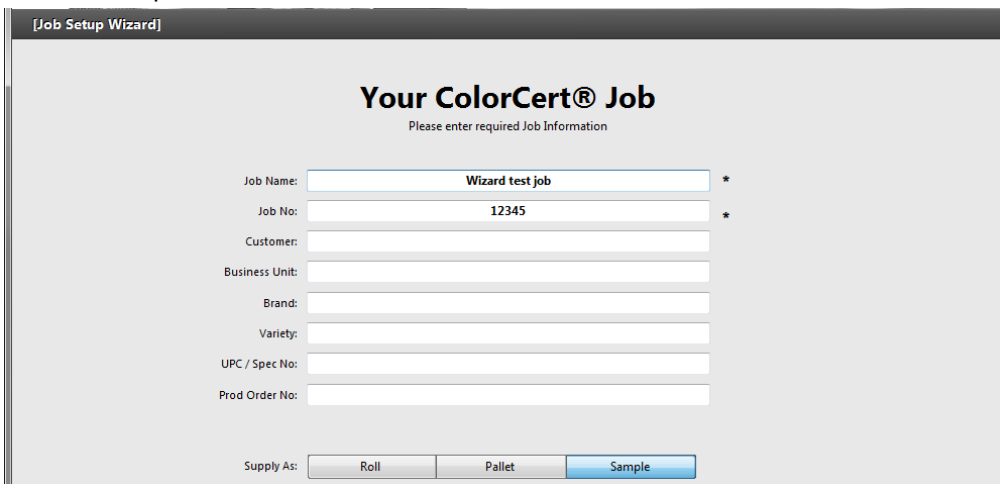
Creating a Job with the Job Setup Wizard

This can be done with the ColorCert Manager, ColorCert Pressroom Client.

1. In the **ColorCert Chooser** select **Pressroom Tools** and then select **Job Setup Wizard**.

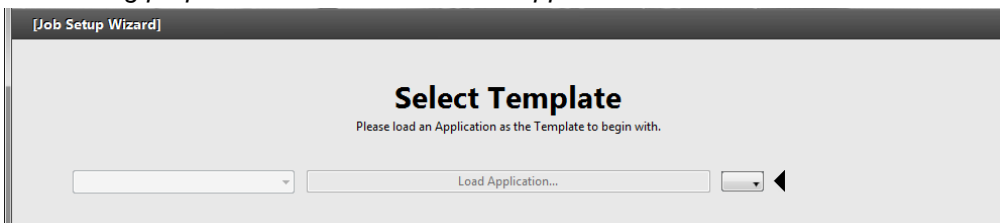


2. Enter the required Job information and Click **Continue**.

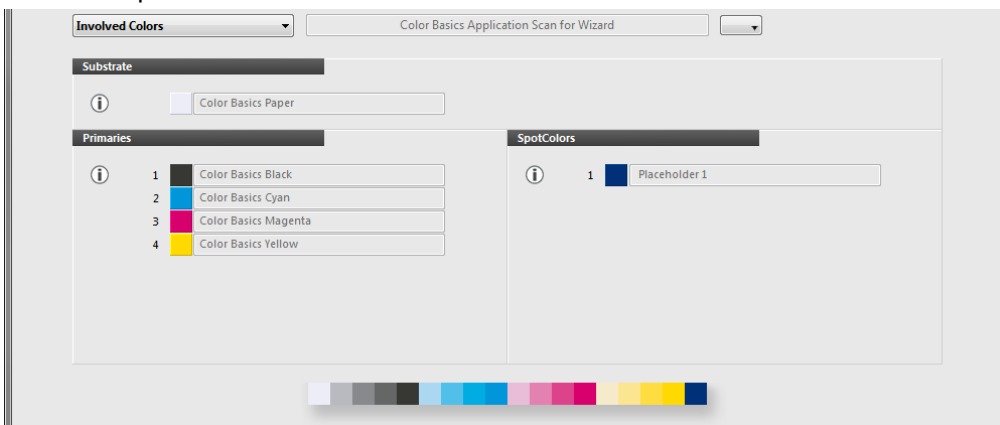


3. Select a ColorCert **Application** as a template.

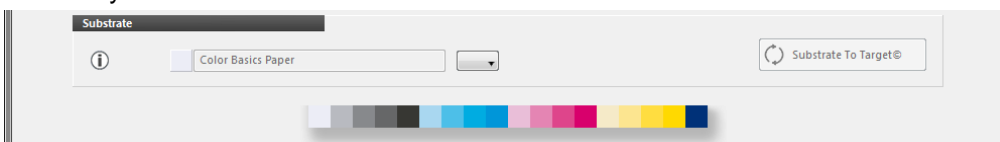
For training purposes use the Color Basics Application Scan for Wizard.cca.



The Window shows all involved color. If you want to see the information of the Rules and Profiles use the drop down list labeled with **Involved Colors**.



4. Click **Continue**.
5. Check if your **Substrate** is correct.



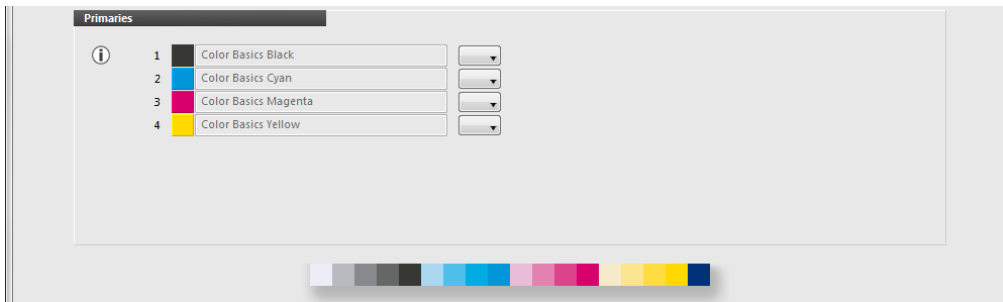
You can replace it if necessary with any Substrate available via the resources in the drop down list. The solid color targets will not be adjusted, although the effect of the different substrate has an influence on the tints (Ink Adaption Method 3 Preserve Solid Ink Color).



If allowed in the Rules (under Settings 4 -> Dynamic Target Adjustment) you can use Substrate to Target to measure your actual paper stock like within a usual ColorCert Job. In this case the color targets adjustment is based on the Method defined in Dynamic Target Adjustment Rules.

6. Click **Continue**.

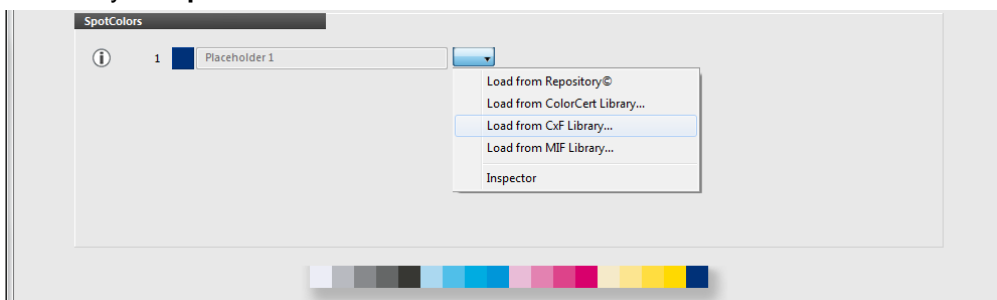
7. Check if your **Primaries** are correct.



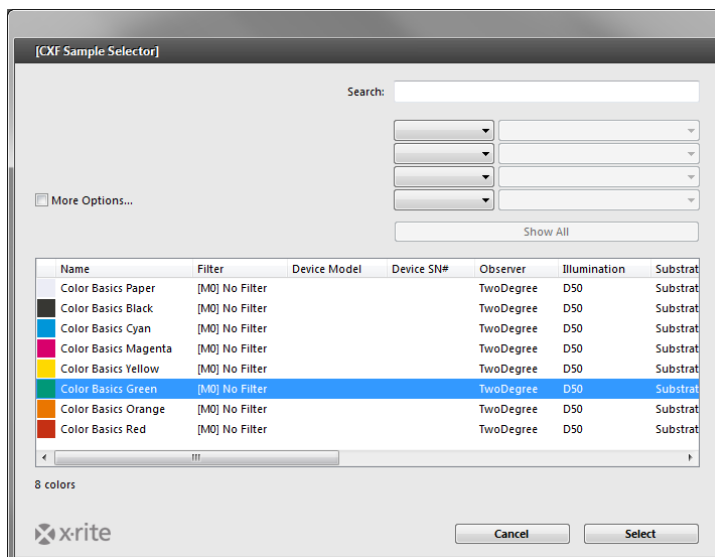
You can replace them if necessary. If you replace a color that was initial measured with a different substrate the solid color targets will not be adjusted, although the effect of the different substrate has an influence on the tints (Ink Adaption Method 3 Preserve Solid Ink Color).

8. Click **Continue**.

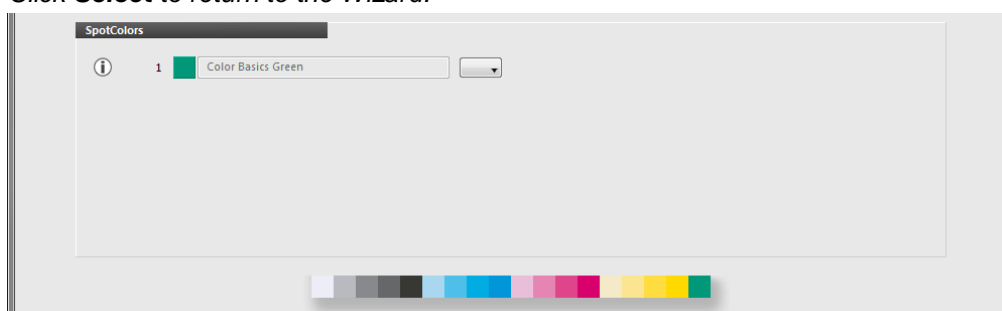
9. Check if your **Spot Colors** are correct.



- For training purposes use the drop down and select **Load from CxF-Library**
- Select the **ColorBasics.cxf** from the ColorBasics Sample Data.
- Select **Color Basics Green**.

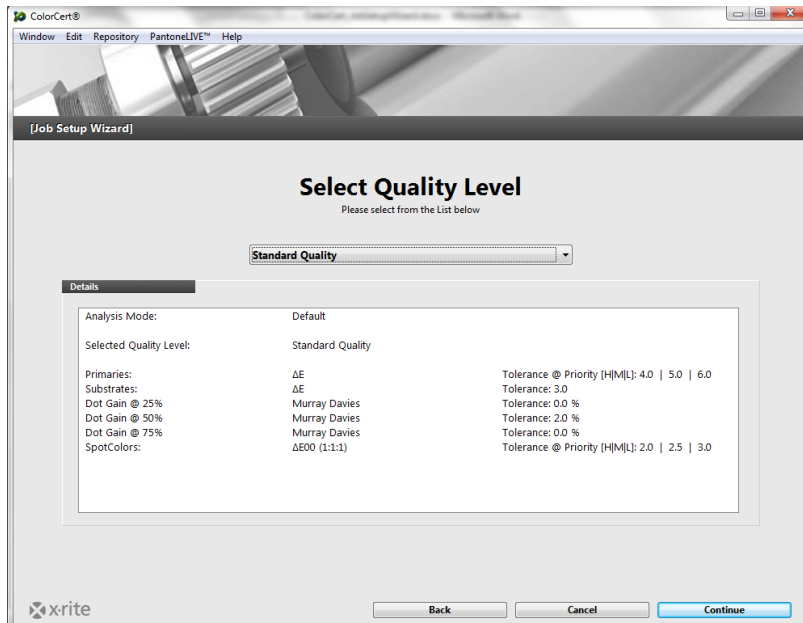


- Click **Select** to return to the Wizard.



10. Click **Continue**.

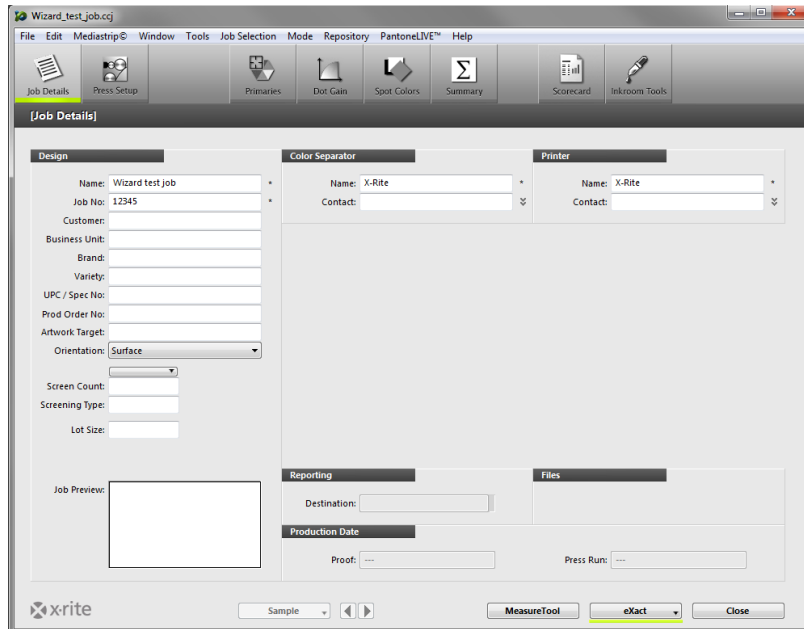
- If you have different **Quality Levels** defined in the Rules you can select them from the drop down. The details of each level are shown below.



For training purposes select **Lower Quality**.

- Click **Continue**.
- Finally you will be asked to save the job. The Default name for the job will be according to the naming convention of the Rules. Click **Save**.

The Job is now ready to use. If required you can add further Job Details or the Press Setup manually or import Metadata from PDF or Text.



Start Measuring as usual.