

ColorCert Analysis Modes

Version History

- August 7th 2015 - Version 1.0
- March 31st 2017 - Version 1.1 (Updated support links)

Scope

This document describes the definition and usage of different Analysis Modes in ColorCert. How to define Custom Mediastrips as required in one of the Modes is explained in a different document.

Solution Summary

When you analyse the values of a Mediastrip the patches typically have different check functions. Solids are checked against a color target values and tints against dot gain or undercolors.

If you want to analyse all patches of a Mediastrip against a color target values this is now possible using the new Analysis Mode Color Only.

The Color Only Mode in combination with a IT8/CGATS file even allows you to check any value of the Chart in the Chart Lookup Mode.

Analysis Modes

Default Mode

- Check quality based on standards such as color and dot gain
- Use color profiles of any kind as a target

Color Only Mode

- Check quality based on color only on all kind of patches
- Use color profiles of any kind as a target

Chart Lookup Mode

- Check quality based on color only on all kind of patches
- requires a IT8/CGATS file as a Profile as it refers to individual patches
- requires a Custom Mediastrip based on the chart content

Requirements

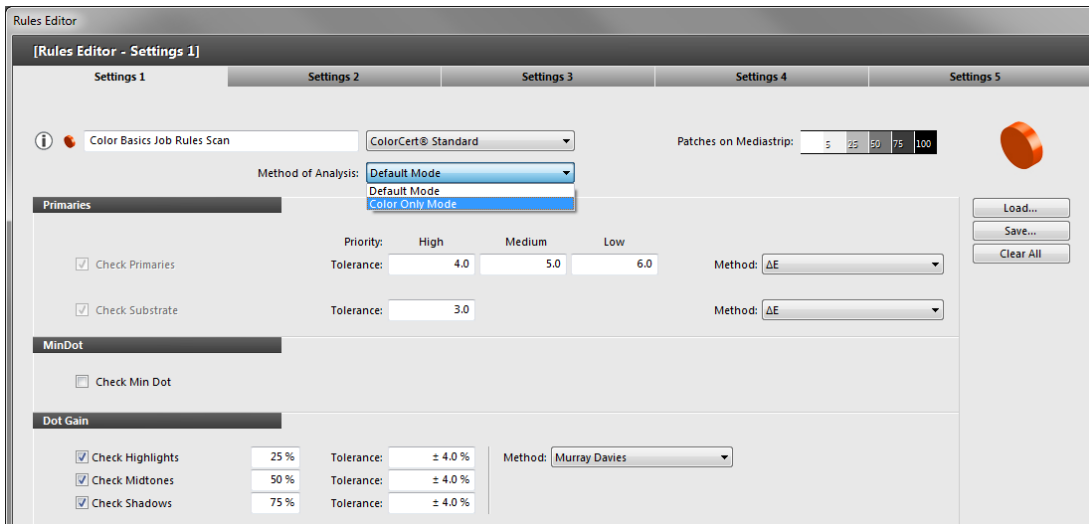
- ColorCert Manager 2.6 to select the Analysis Modes in the Rules
- ColorCert Pressroom Client 2.6 or ColorCert Pressroom Essentials Client 2.6 to use jobs with any Analysis Mode
- Useful samples and information from the ColorCert support website <http://www.xrite.com/service-support/product-support/formulation-and-qc-software/colorcert-desktop-tools>
 - Color Basics for Pressroom (Rev. B) (physical sample sheet in the eXact box)
 - ColorCert Color Basics Sample Data
 - ColorCert Startup and Configuration Guide
 - ColorCert Custom Mediastrip

Defining Analysis Modes in the Rules

This can be done with the ColorCert Manager.

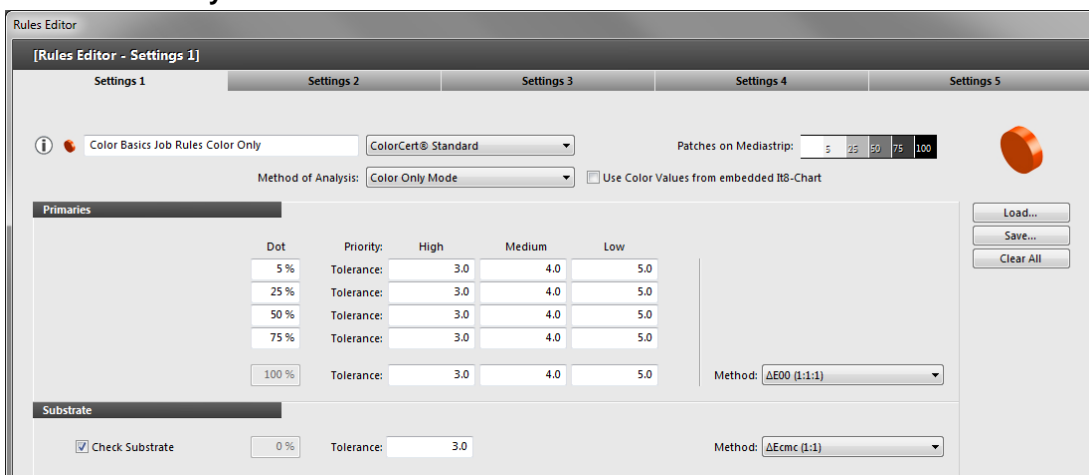
Analysis Mode Color Only

1. In the **ColorCert Chooser** click **Editors** and select **Rules Editor**.
2. Load or Create your **Rule** as usual.
3. On **Settings 1** Tab you can select the **Method of Analysis**.



The screenshot shows the 'Rules Editor - Settings 1' window. The 'Method of Analysis' dropdown is set to 'Color Only Mode'. The 'Primaries' section has 'Check Primaries' and 'Check Substrate' checked. The 'MinDot' section has 'Check Min Dot' unchecked. The 'Dot Gain' section has 'Check Highlights', 'Check Midtones', and 'Check Shadows' checked. Tolerance values are set to 4.0 for High, 5.0 for Medium, and 6.0 for Low. The 'Method' dropdown is set to ΔE .

4. Select **Color Only Mode**.



The screenshot shows the 'Rules Editor - Settings 1' window with 'Color Only Mode' selected. The 'Primaries' section is expanded, showing a table of tolerance values for different dot percentages and priorities. The 'Substrate' section has 'Check Substrate' checked and a tolerance of 3.0. The 'Method' dropdown is set to ΔE_{00} (1:1:1).

Dot	Priority: High	Priority: Medium	Priority: Low
5 %	Tolerance: 3.0	Tolerance: 4.0	Tolerance: 5.0
25 %	Tolerance: 3.0	Tolerance: 4.0	Tolerance: 5.0
50 %	Tolerance: 3.0	Tolerance: 4.0	Tolerance: 5.0
75 %	Tolerance: 3.0	Tolerance: 4.0	Tolerance: 5.0
100 %	Tolerance: 3.0	Tolerance: 4.0	Tolerance: 5.0

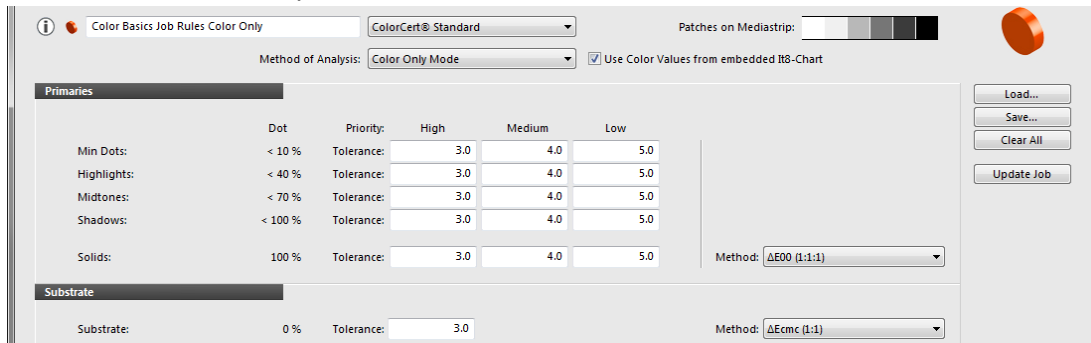
The Functions Min dot and Dot Gain (as well as Undertones on Settings 2) are removed, but you can now define ΔE tolerances for four tint values and the Solid. For each you can have the three priorities as usual. You can now enter the relevant ΔE tolerances and the ΔE Method.

5. Continue creating or amending your **Rules** as usual and **Save** it.

NOTE: To create a Job with Color Only Mode you need a profile with properly defined inks (solid including tints) as Primaries, such as ColorCert Inks, ICC or IT8/CGATS.

Analysis Mode Color Only with Chart Lookup

1. In the Rules Editor on Settings 1 Tab click **Use Color Values from embedded IT8-Chart** to activate the Chart Lookup Mode.



Dot	Priority:	High	Medium	Low
Min Dots: < 10 %	Tolerance:	3.0	4.0	5.0
Highlights: < 40 %	Tolerance:	3.0	4.0	5.0
Midtones: < 70 %	Tolerance:	3.0	4.0	5.0
Shadows: < 100 %	Tolerance:	3.0	4.0	5.0
Solids: 100 %	Tolerance:	3.0	4.0	5.0

The Dot Values are now defined as a range instead of a specific tint as the tint is only defined when you create the Custom Mediastrip. You can now define ΔE tolerances for four tint ranges and the Solid. For each you can have the three priorities as usual

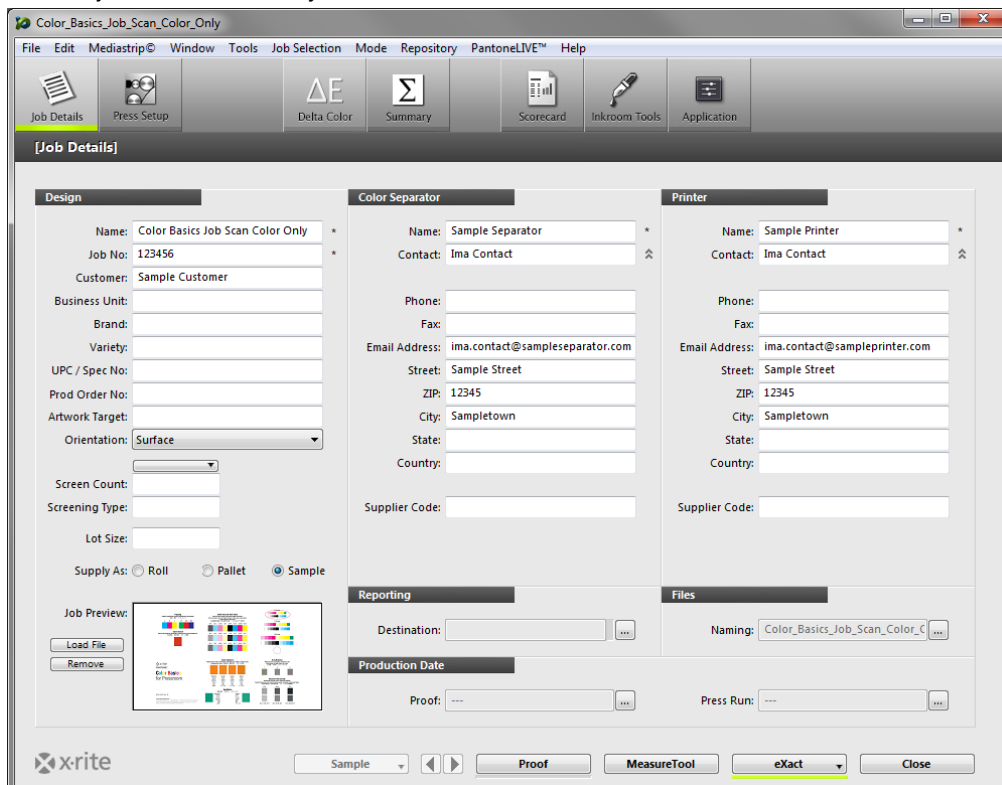
2. Continue creating or amending your **Rules** as usual and **Save** it.

NOTE: To create a Job with Chart Lookup Mode you need an IT8/CGATS file as a Profile and a Custom Mediastrip based on this file. See separate document for Custom Mediastrip.

Using a ColorCert Job in Color Only Mode

This can be done with the ColorCert Manager, ColorCert Pressroom Client or ColorCert Pressroom Essentials Client.

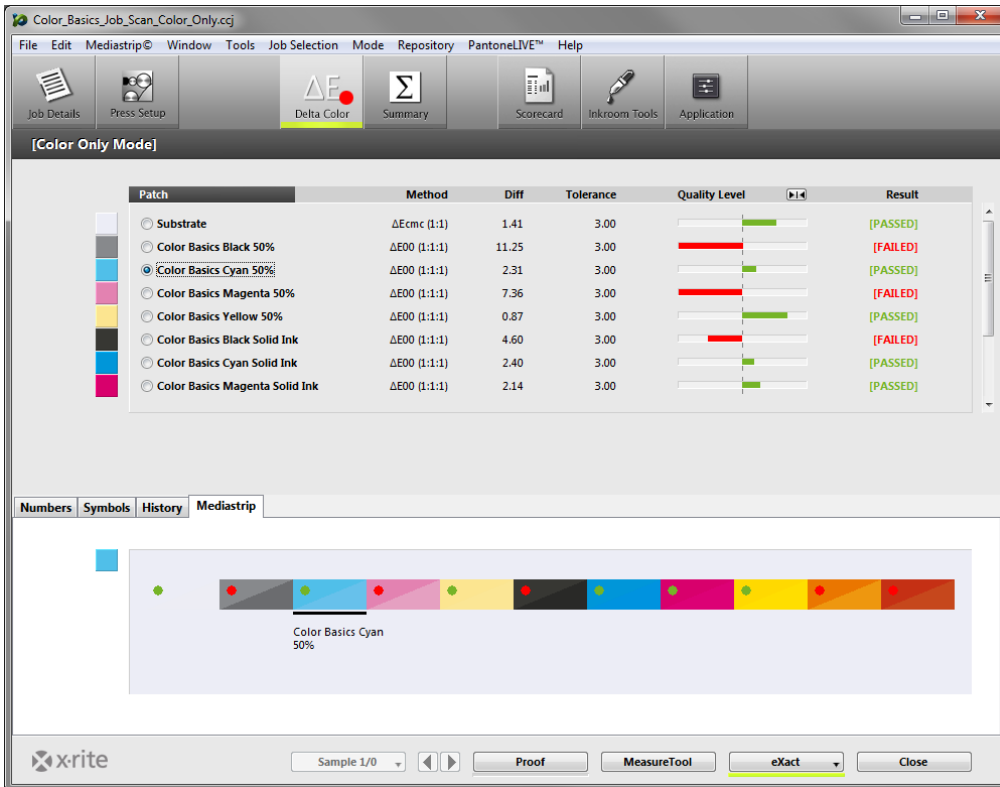
1. Load a job with Color Only Mode as usual



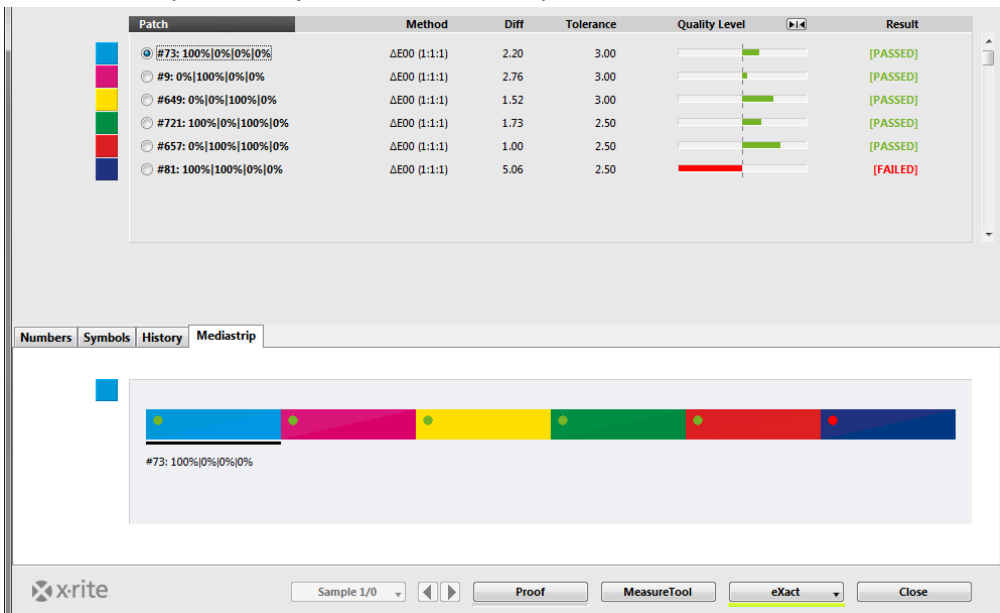
NOTE: The Toolbar now has just one Delta Color Button instead of Primaries, Spot Colors, Dot Gain, Min Dot or Undertones.

2. **Measure** as usual.

3. Click **Delta Color**. You will see the results of all patches in one list.
4. Select the **Mediastrip Tab**. The measured patches are displayed in the order of measurement and show red or green circles if they have passed or failed.



Here an example from a job with Chart Lookup Mode:



Note: If you have duplicated patches in your Custom Mediastrip you will see each patch result here to analyze them separately, although they will be averaged for the score.

5. Continue to **Measure, Analyze** and **Save** as usual.