



## MA-5 QC

Multi-Angle  
Spectrophotometer



### Quickly Evaluate Special Effects Found in Consumer Electronics & Appliances

The MA-5 QC is a cost-effective multi-angle color measurement device designed to ensure color harmony on metallic colors and effect finishes. Featuring strategically placed optics at the tip, it is 60% faster, 50% lighter, and 40% more compact than any other five-angle device on the market. It allows operators to easily position MA-5 QC with one hand and capture more measurements per hour, eliminating the operator error typically associated with current multi-angle instruments.

While metallic, pearlescent, and other complex finishes are beautiful and help brands stand out on the shelf, they introduce new color measurement challenges in the manufacturing process. Built with quality control managers in mind, the MA-5 QC can identify color defects early in the manufacturing process and avoid unnecessary rework. Ultimately, catching color errors early on and speeding up the time to market will quickly show a positive return on investment for the MA-5 QC.

### Measure Color with Confidence

- Ensures the instrument is always correctly positioned on the sample with indicator lights.
- Captures fast measurements in less than 2.5 seconds.
- Delivers greater than 95% repeatability within 0.16 dE when tested on 196 samples that included solid, metallic, and pearlescent effects.
- Collects multiple data points quickly when programmed for automated jobs.
- Keeps dirt out of the device with an automatic optics shutter.

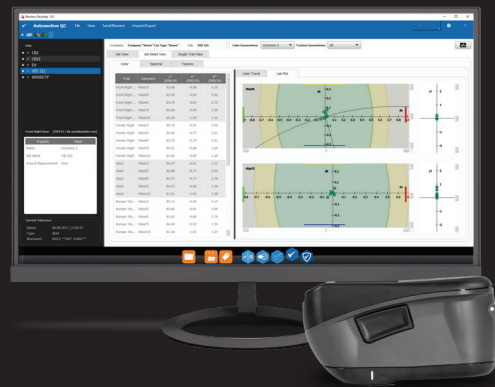
### Analyze Data with Ease

- Saves time by providing fast output of data with one-click reporting and an intuitive touch screen interface.
- Gauges whether temperature of the sample is affecting color data with the first to market on-screen temperature preview.
- Provides green and red pass/fail tolerance lights for fail-proof analysis.
- Understands legacy data for compatibility with MA68II and MA94.
- Integrates with existing digital standards for easy migration.
- Includes a docking station to conveniently connect with a PC and automatically charge the device.

# MA-5 QC Multi-Angle Spectrophotometer

## A Complete Solution for Quality Control on Metallic and Complex Finishes

X-Rite's EFX QC software complements the MA-5 QC to digitally communicate tolerances and measurement procedures and enable real-time monitoring of color harmony across the supply chain. It also supports advanced features like job based searchable databases.



## Specifications

<b>Spectro Measurement</b>	Detection 45° Illumination 15°, 25°, 45°, 75°, 110°
<b>Positioning</b>	Three pressure sensors
<b>Measurement Spot Size</b>	12 mm
<b>Measurement Time</b>	2.5 seconds
<b>Short Term Repeatability on White</b>	0.02 $\Delta E^*$
<b>Reproducibility on BCRA Tiles</b>	All BCRA tiles: avg. $\Delta E^* < 0.1$
<b>Inter-Instrument Agreement</b>	Avg. 0.18 $\Delta E^*$ on BCRA Tile Set
<b>Wavelength Range</b>	400 – 700 nm
<b>Wavelength Resolution</b>	10 nm

<b>Measurement Range</b>	0 to 600% reflectance
<b>Operating Temperature</b>	10 – 40°C, rel humidity 85% at 35°C non-condensing
<b>Battery Lifetime</b>	2,000 measurements
<b>Memory</b>	500 jobs
<b>Weight</b>	0.6 kgs (1.4 lbs)
<b>Size</b>	L 180mm x W 70 mm x H 95mm (L 7.1 in x W 2.7 in x H 3.7 in)
<b>Calibration</b>	internal, external white
<b>Calibration Interval</b>	21 days
<b>Connectivity</b>	USB
<b>Software compatibility modes</b>	Native MA-5 QC and MA94 emulation mode

## Service Support & Warranty

X-Rite's color analysis and measurement solutions are engineered and manufactured to the most rigorous quality standards. These standards are backed by comprehensive global service, superior phone and web support, and preventative maintenance options to optimize your long-term investment. We have developed service support and warranty plans that are unique to your organization's specific products and needs.

Learn more by reviewing our service offerings on our website at: [www.xrite.com/page/service-warranty](http://www.xrite.com/page/service-warranty).

Still unsure of what you need? Contact us directly at: [servicesupport@xrite.com](mailto:servicesupport@xrite.com)