

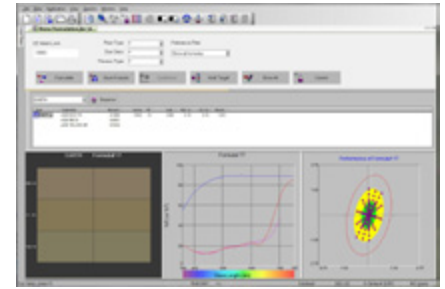
Color **iTextile**

Quick and Accurate Quality Control
and Color Formulation Software

Color iTextile adapts to your workflow to make color fast and easy. Color iTextile Software is a document-oriented software solution that removes the guesswork from evaluating colors. Its easy adaptability allows analysis of lab dips, production samples, and finished products. Coupled with the industry's most advanced color matching technology, Color iTextile enables quick, accurate color analysis with the capability to optimize every formula for cost and color accuracy.

Specifications

Color Spaces	CIE L*a*b*, CIE L*C*h*, Hunter Lab, CIE (XYZxy)
Illuminants	D50, D55, D65, D75, F2, F7, F11, C, A, Horizon (GretagMacbeth), TL84, Ultralume 3000
Color Differences	FMCI, CIE DL*, Da*, Db*, CIE DL*, DC*, DH*, Hunter DL, Da, Db
Pass / Fail	All Attributes of CIELab, CIElch or Hunter Lab, CMC (l:c), CIE2000 (l:c:h)
Industry-Standard Indices	Whiteness [ASTM E313, CIE, GANZ, Berger, Stensby, Taube, Tappi] Yellowness [ASTM E313, D1925] Strength [SWL, Summed, Weighted Sum], Munsell Notation Gloss [ASTM E429, Gloss60] Grey Scale [ISO 105 Staining, Color Change] Metamerism, Color Constancy Index



Features

General	<ul style="list-style-type: none"> User Defined Screen Layouts Interactive Plots and Graphs Visual Representation of Tolerances Cross Trial Color Differences Document Driven Architecture - Jobs Multiple Tolerancing Methods [User, Statistical, CMC, Historical] Data Tagging and Tracking NetProfiler Enabled Import Capabilities [CxF, EXP, DAT, QTX] Data Management / MS Access Database Fully Integrated Quality Control and Formulation Supported Instruments: Color i7, Color i5, Ci52, RM61, XTS, CFS57 Language Options: English, Chinese, Portuguese, Korean
Formulation	<ul style="list-style-type: none"> Superior Color Matching Measurement Modes Tristimulus Matching Formula Search Multiple Target Matching Manual Formulation and Correction User Definable Formula Output Quick Corrections Primary Evaluation Configurable Recipe Scoring and Formula Sorting

PC Requirements	Recommended	Minimum
Processor	Intel Core 2 duo, AMD Athlon II or higher	Pentium IV
CPU Speed	2 GHz or higher	1 GHz
RAM	2 GB or higher	1 GB
Operating System	Windows® 7 [both 32 and 64 bit versions], XP Professional SP3	Windows® XP Professional SP3 1 GB free space on system disk
Hard Disk	5 GB free space on system disk	2GB free space on data disk
Com Ports	1 Serial	1 Serial
Video Adapter	XGA [1024 x 768] 32 bit True Color	SVGA [1024 x 768] 16 bit High Color

X-Rite: Your source for accurate color. On time. Every time.

X-Rite is a world leader in providing global color control solutions for manufacturing and quality management requirements. We lead the industry in offering service options to ensure uninterrupted performance of all X-Rite products. Training and educational resources are available globally and online for both new and experienced users to optimize their color measurement capabilities.

Visit xrite.com for more information about X-Rite products. X-Rite customers worldwide may also call the Applications Support team at CASupport@xrite.com or Customer Service at 800-248-9748.



XRITE.COM | PANTONE.COM

© 2011, X-Rite, Incorporated. All rights reserved.
PANTONE® and other Pantone LLC. trademarks are the property of Pantone LLC.