



## Windows 7: Compatibility with Industrial Software Products

Revision: 2.3  
Prepared by: Richard Knapp  
Date: 07 October 2011

### 1 Compatibility Matrix

Windows 7 Compatibility Matrix	32-Bit	64-Bit
<b>Stand-Alone Applications</b>		
X-Color QC 2.5 [or higher]	Yes	Yes
Color iQC / Color iMatch 7.x [or higher]	Yes	Yes
X-RiteColor Master (QA/Formulation) 8.3 [or higher]	Yes	Yes
NetProfiler 1.8 / 2.1	No	No
<b>Instrument Drivers</b>		
X-Color QC 2.5		
Serial Instruments (SP Series, 900 Series, MA68II, etc.)	Yes	Yes
MA98 Family [USB]	Yes	Yes
VS450 [USB]	Yes	Yes
Color i5 / Color i7 [USB]	No	No
Color i5 / Color i7 [Serial]	Yes	Yes
Color iQC / Color iMatch 7.x		
Serial Instruments (SP Series, 900 Series, CE-7000A, etc.)	Yes	Yes
VS450 [USB]	Yes	Yes
Color i5 / Color i7 [USB]	No	No
Color i5 / Color i7 [Serial]	Yes	Yes
X-RiteColor Master [QA/Formulation] 8.3		
Serial Instruments (SP Series, 900 Series, MA68II, etc.)	Yes	Yes
VS450 [USB]	Yes	Yes
Color i5 / Color i7 [USB]	No	No
Color i5 / Color i7 [Serial]	Yes	Yes

### 2 Color iQC and Color iMatch: Stand-Alone Versions

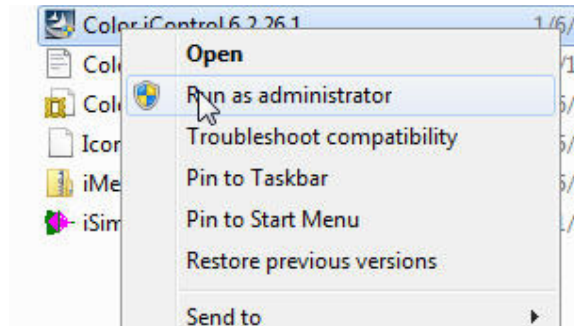
With the release of Color iQC and Color iMatch Version 7.1, this product family will now run under both the **32 bit** and **64 bit** versions of Windows 7. To insure the best possible user experience, there are some procedures which must be followed in order to avert any potential issues.

- ▶ Before beginning an install, make sure the operating system is fully installed and

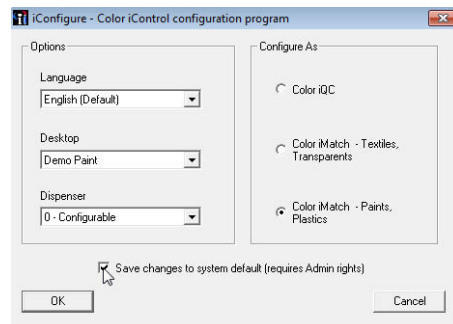
any updates have been applied.

- ▶ Make sure you have an account that has administrator rights. Under Windows 7, even though an account has administrator rights, those rights are not exercised unless you specifically request them [usually by specifying to “run as administrator”, or by selecting “Yes” when prompted by a windows security “User Account Control” prompt].

1. Locate the self-installing image for Color iControl using Windows Explorer.
2. Right click on the self-installing exe and chose “Run as Administrator”. Select “Yes” if prompted for “Do you want to allow the following program to make changes to this computer?”

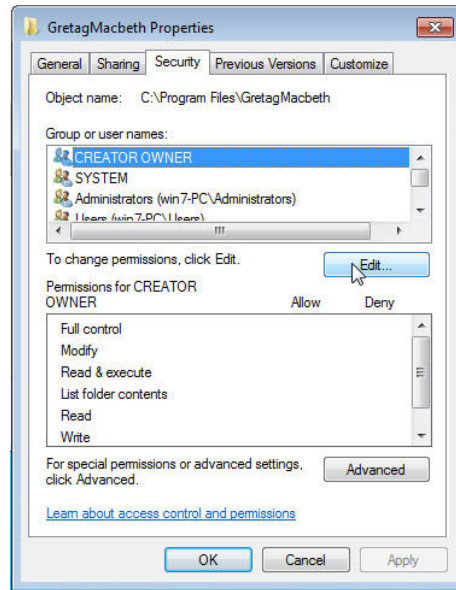


3. Follow normal instructions for installing Color iControl. When the **iConfigure** dialog is displayed, make sure you select “Save changes to system default” before pressing **<OK>**.

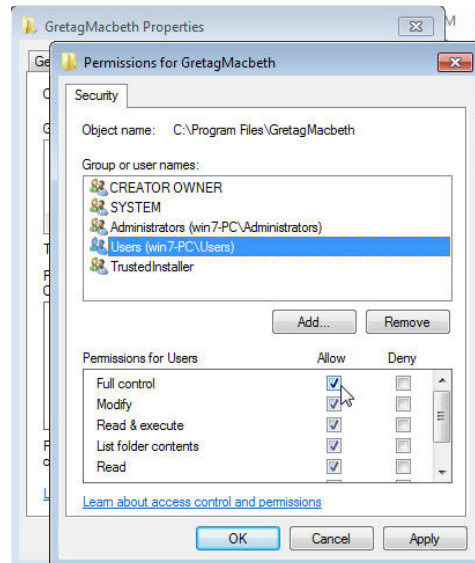


4. When completed, run Windows Explorer [shortcut is to right click on the lower left Windows icon and choose *Open Windows Explorer*].
5. Navigate to the **Program Files\GretagMacbeth** folder, right click and select **Properties**.

- a. Select **Security** tab

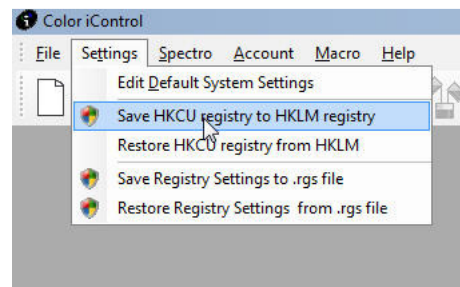


- b. Click **Edit** to change permissions
- c. Select “Users” (or whatever group that needs to have Full access to run Color iControl).
- d. Check the “Full” rights access.



- e. Click **<OK>**, then **<OK>** to exit the dialog.
6. Right click on the Color iControl icon again and choose “Run as administrator”.

- a. Select “Yes” if prompted for “Do you want to allow the following program to make changes to this computer?”
- b. Activate the software.
- c. Setup software as desired.
- d. If multiple users will be using the software you can store these settings as a default. Close all jobs and select “Settings”, then “Save HKCU registry to HKLM registry”. This will write the settings to the registry for use as a default for other users.



You may now run Color iQC and Color iMatch as normally done, however note the following:

- ▶ Currently the Color i5 and the Color i7 USB driver do not work in Vista or Windows 7. You may use the serial mode [including use of a **Keyspan USB-Serial Adaptor**] if you are using a Color i5 or Color i7.

### 3 Color iQC and Color iMatch: Online Edition

Version 7.0 [or higher] Online Editions of Color iQC and Color iMatch are compatible with both the 32-bit and 64-bit versions of Windows Server 2008.

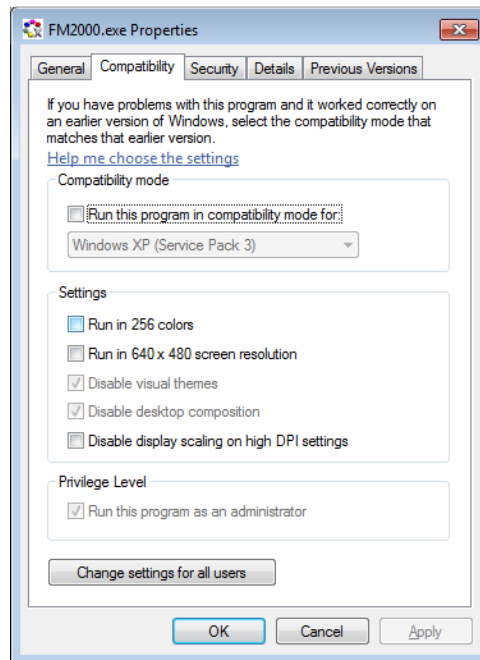
### 4 X-RiteColor Master

To run or license the software in the Windows Vista or Windows 7 environment, users must do the following:

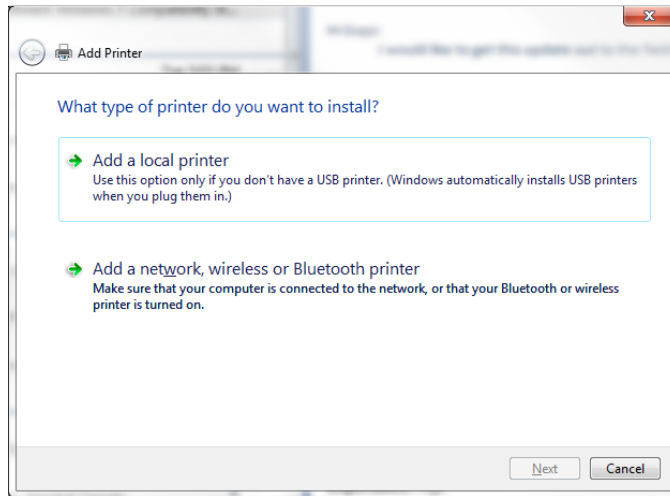
- ▶ To install, the user must be logged on as a local administrator. In addition, the user must right click on setup.exe and choose “Run as Administrator”. Select “Yes” if prompted for “Do you want to allow the following program to make changes to this computer?”
- ▶ In order to license the application (if not done during the install) the user must

right click on FM2000.exe (or the shortcut placed on the desktop), and choose “Run as Administrator”. Once the application is licensed it can be run normally.

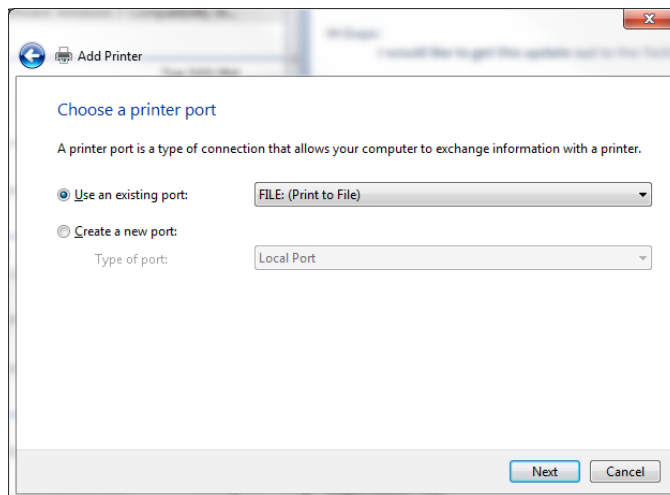
- ▶ UAC [User Account Control] must be disabled.
- ▶ “Disable Visual Themes” and “Disable Desktop Composition” must be checked for all users. This is done by right clicking the FM2000.exe found in the X-RiteColor Master install directory.



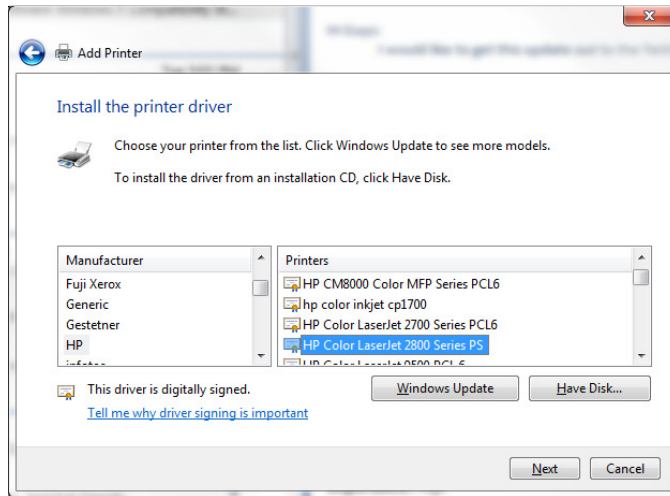
1. The “Print to PDF” feature in XCM will not work under Windows Vista or Windows 7 “as is”. However, you can make it work by using the following printer setup.
  - a. Add a local printer:



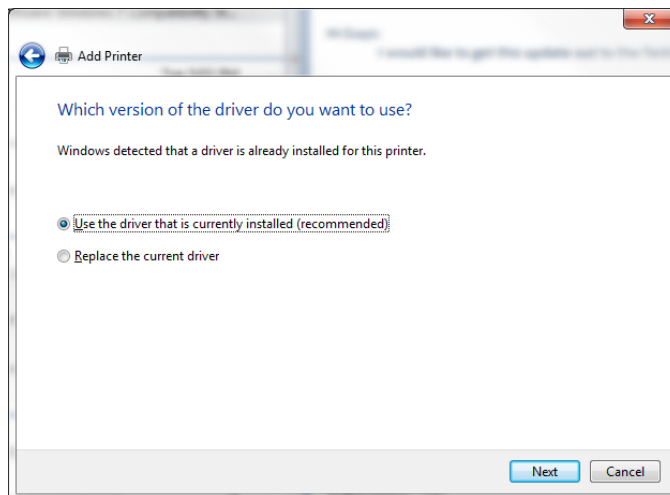
b. Choose "Print to File" for the printer port:



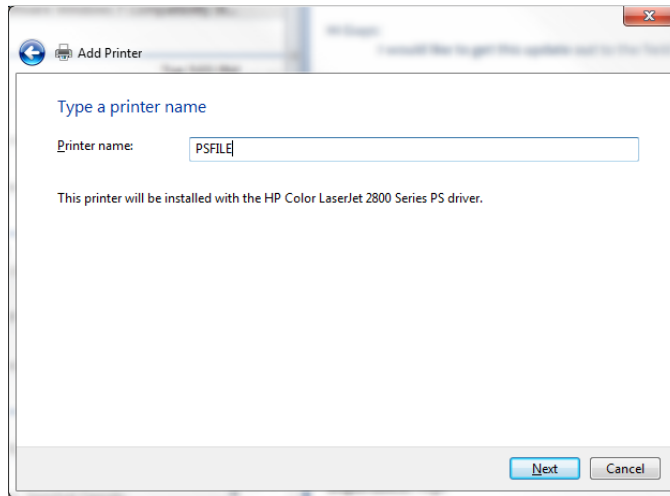
c. Select the HP Color LaserJet 2800 Series PS device:



d. Use the default driver:



e. Name the printer PSFILE:



## 5 X-RiteColor Master Web Edition

Version 8.4 [or higher] of X-RiteColor Master Web Edition has been installed and successfully operated in the Windows Server 2008 environment. Version 8.4 of the XCM Client Connect now supports the 64-bit versions of Windows Vista and Windows 7. X-RiteColor Master WEB Edition no longer requires Internet Explorer to connect to the X-Rite software. Instead, installing the WEB Edition Connection Client application will allow you to connect directly via Microsoft Terminal Services Remote Desktop. Once you have installed the application, simply use the "X-RiteColor Master Client" shortcut that will be placed on your desktop, and enter the IP address or server name. This will take you to the logon screen as normal. This software must be installed on each client computer that will access and run X-RiteColor Master WEB Edition software.

## 6 X-Server [for X-RiteColor Master]

The X-Server utility has not been tested in any 64-bit environments. X-Server is an older product, using old technology, which cannot be made to work with current operating systems without a total rewrite of the utility. X-RiteColor Master Web Edition was introduced as the intended replacement for the X-Server utility. It may be possible to run this utility using the Windows XP feature in Windows 7 feature but this has not been tested.

## 7 NetProfiler

NetProfiler will not install or run under the 32 bit or 64 bit versions of Windows 7. This issue will be corrected in NetProfiler 3.0.





## 8 Color i5 and Color i7 USB Drivers

The current USB drivers for the Color i5 and Color i7 will not work under the 32 bit or 64 bit versions of Windows 7. For PCs that only have USB ports, the **Keyspan USB-Serial Adaptor** must be used to enable communication between the Industrial software products and Color i5 or Color i7 instruments.