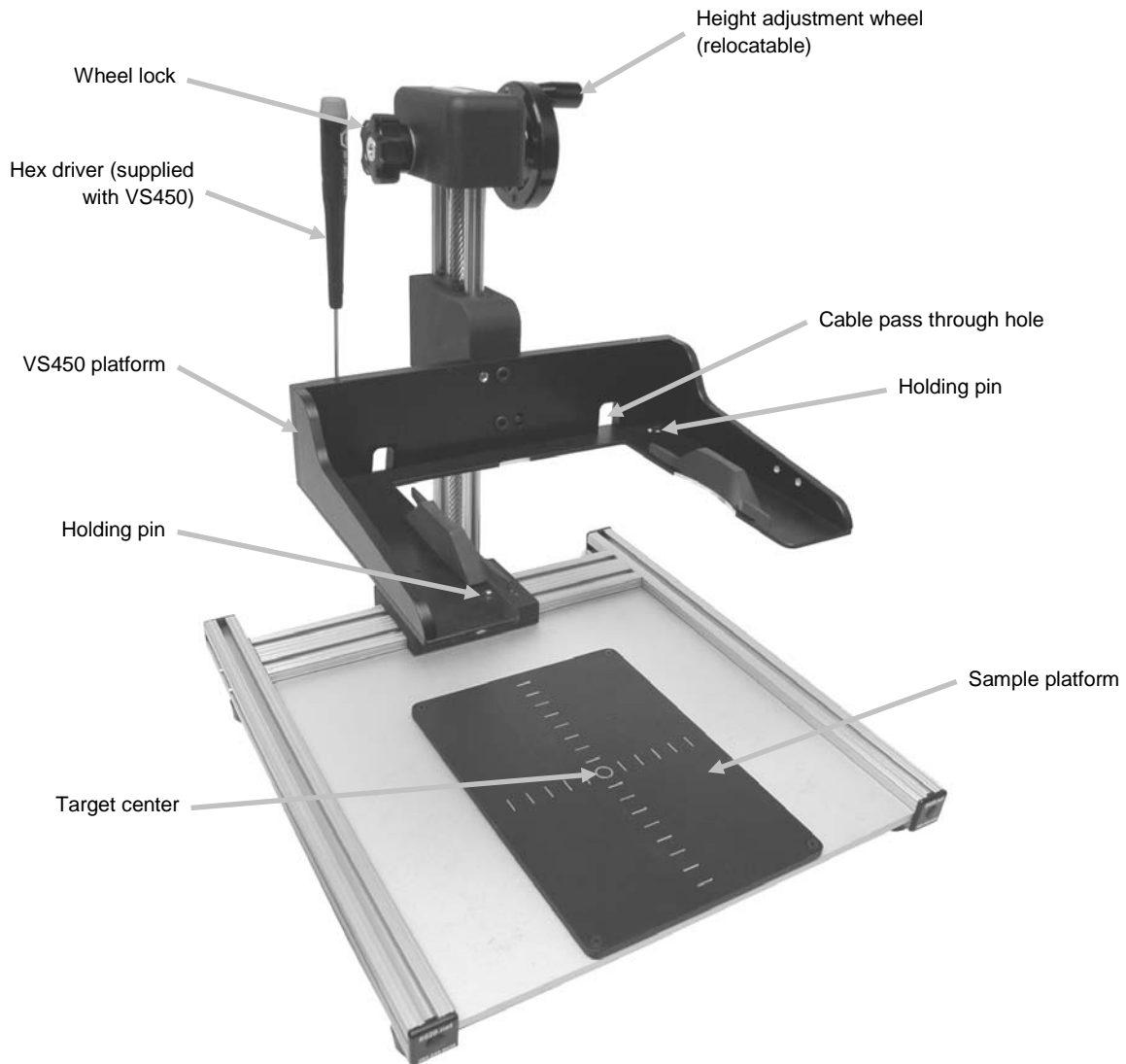




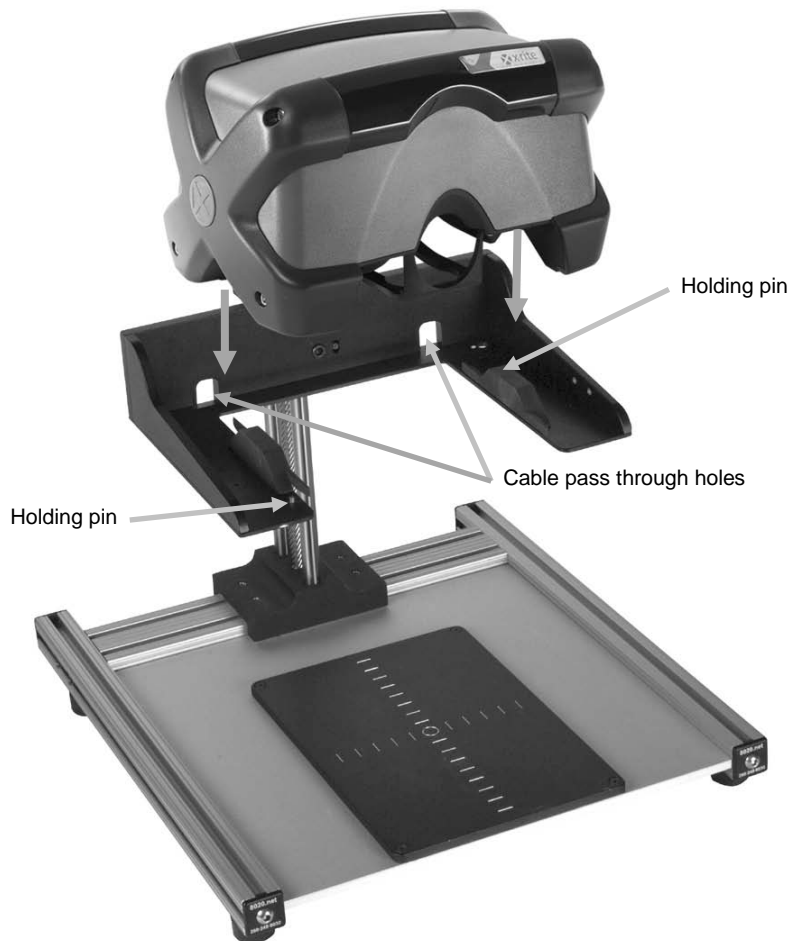
VS450 Mounting Stand Setup and Operation Instructions

The VS450 mounting stand is designed to allow easy and accurate height adjustment of the VS450 non-contact benchtop spectrophotometer, accommodating measurements on samples of varying heights and shapes. The stand can accommodate samples ranging in height up to 8.125" (20.6 cm).



Setup

1. Insert the USB cable and power plug through one of the cable pass through holes at the back of the VS450 platform.
2. Plug the USB cable and power plug into the bottom of the instrument. Refer to the VS450 operation manual for additional information.
3. Seat the instrument onto the holding pins in the VS450 platform. The pins will align with the holes at the bottom back right and bottom front left of the feet.

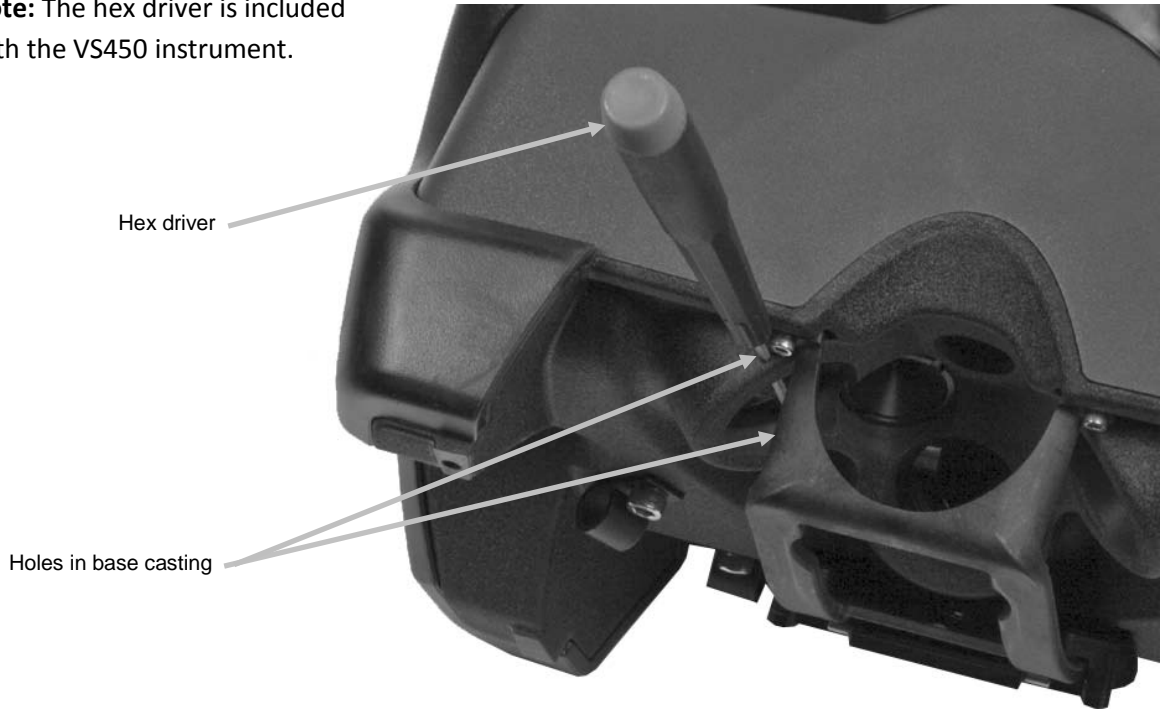


Note: if you would like to relocate the height adjustment wheel to the left side of the stand, refer to the last page of this document for details.

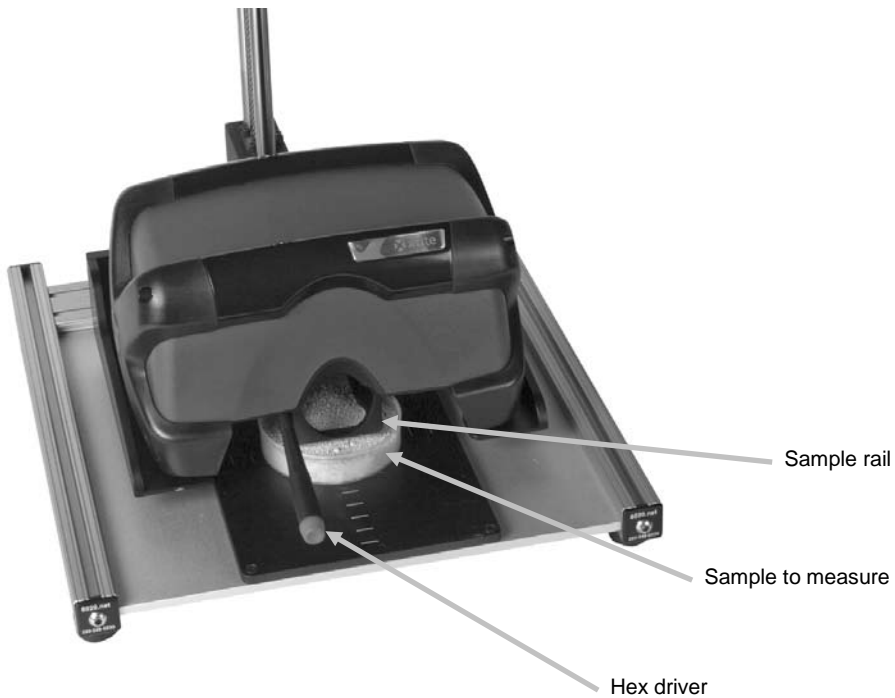
Operation

1. Insert the hex driver through the front hole and then the back hole located in the left side of the base casting. Extreme care should be taken not to contact the lens with the tip of the hex driver.

Note: The hex driver is included with the VS450 instrument.



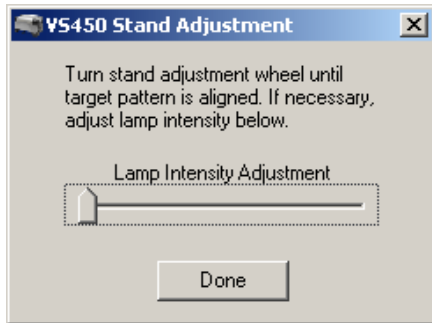
2. Position the sample on the sample platform using the target center as a guide.
3. Turn the height adjustment wheel to position the sample rail of the VS450 close to the sample.



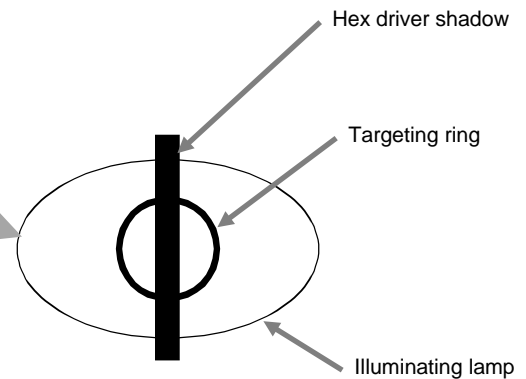
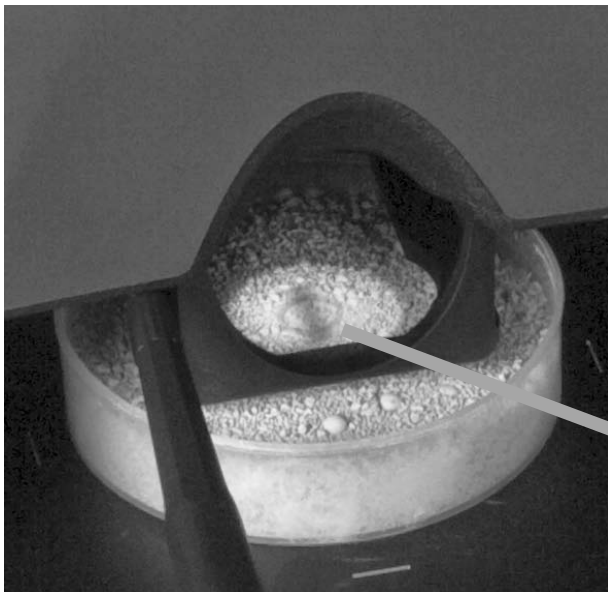
4. Make sure that you exit out of any application that is communicating with the VS450. Launch the VS450 Stand Adjustment Utility (Programs > X-Rite > VS450 Stand Adjustment Utility) to turn on the illuminating lamp in the VS450.

Note: This utility was installed when the VS450 USB driver was installed.

If you are having a hard time viewing the hex driver shadow over the targeting ring, you can increase the lamp intensity by adjusting the control on the dialog.



5. Turn the height adjustment wheel until the shadow of the hex driver precisely bisects the center of the illuminating target ring. This indicates the correct measurement distance.

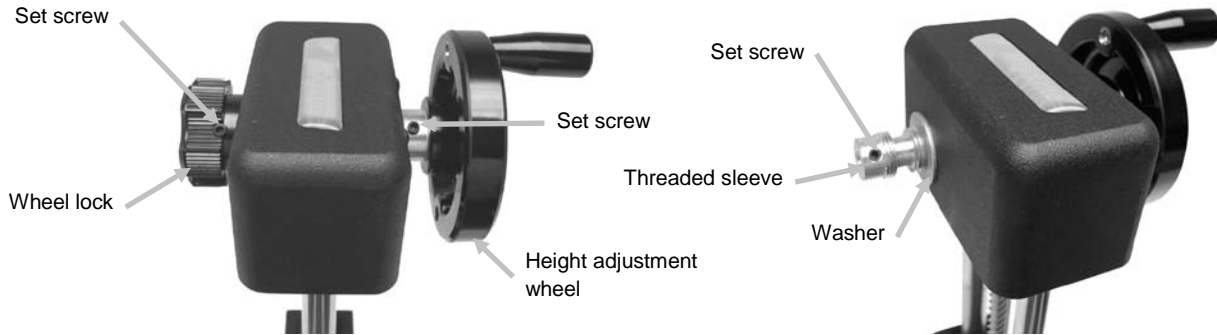


6. Hold the height adjustment wheel steady and tighten the wheel lock on the stand.
7. Click the **Done** button on the VS450 Stand Adjustment dialog and remove the hex driver from the base casting holes.
8. The instrument is now properly adjusted to take measurements.

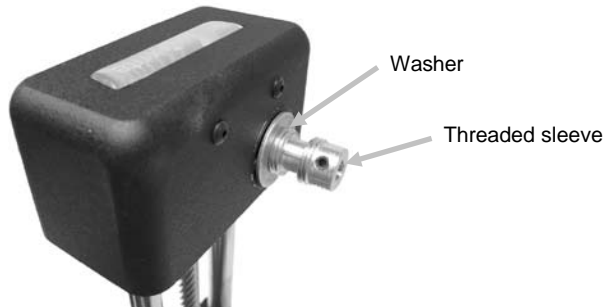
Height Adjustment Wheel Relocation

The height adjustment wheel can be relocated to the left side of the stand if desired. This procedure is performed using the 3/32" hex wrench that was supplied with your instrument.

1. Loosen the set screw located in the wheel lock and unscrew the wheel lock from the threaded sleeve.
2. Loosen the set screw in the threaded sleeve below the wheel lock and remove the sleeve and washer from the shaft.
3. Loosen the set screw in the height adjustment wheel and remove the wheel from the shaft.



4. Install the washer and threaded sleeve on the right side of the shaft. Make sure the sleeve is installed with the set screw on the outside and over the flat spot of the shaft. Tighten the set screw.



5. Install the height adjustment wheel onto the left side of the shaft making sure that the set screw is located on the flat spot of the shaft. Tighten the set screw.
6. Thread the locking wheel back onto the sleeve until the set screw is located over the non-threaded area of the sleeve. Tighten the set screw until it touches the sleeve, and then back off the set screw so that it is just off the sleeve.



P/N VS450-800-500 Rev. A