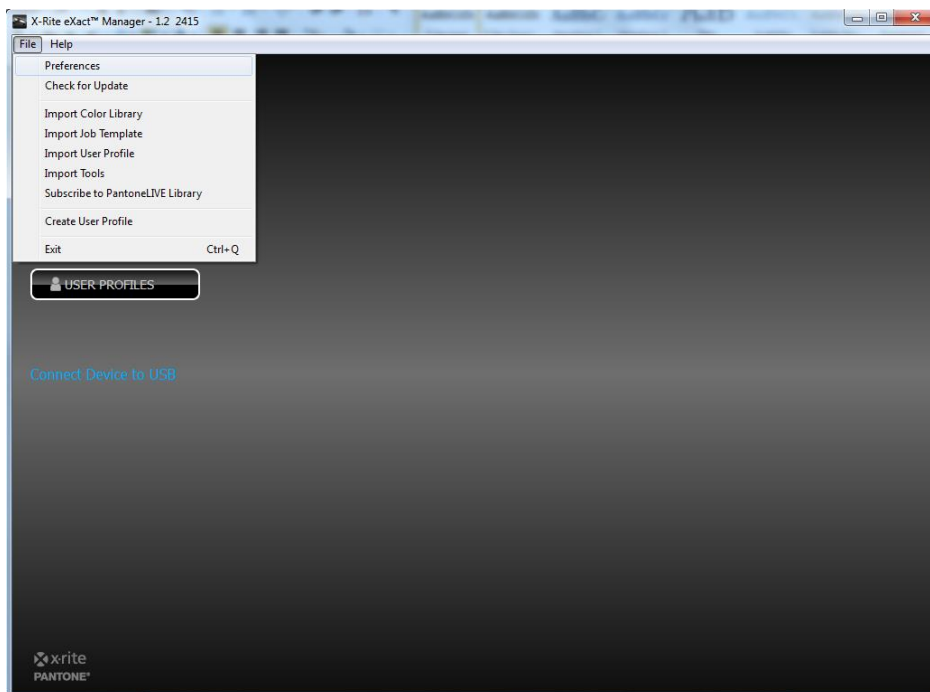


Be sure to follow the instructions in your PantoneLIVE license email to initially claim your PantoneLIVE license and assign it to yourself before continuing. The My X-Rite credentials used in the instructions below must be the credentials that the license was assigned to. If someone else received the license, use their credentials or have them assign (or reassign) them to you.

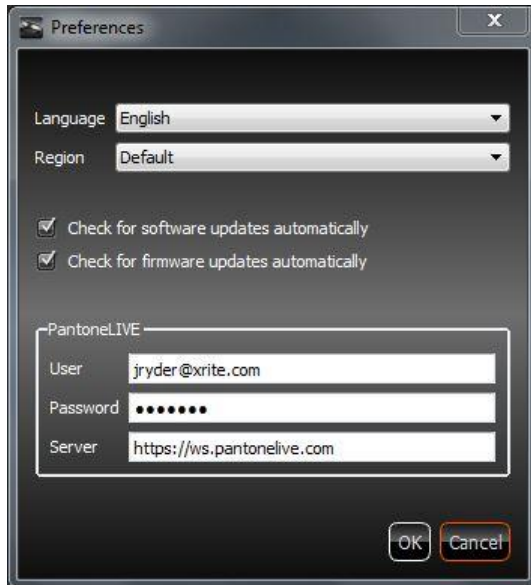
Launch eXact Manager



In the eXact Manager menubar, Select File>Preferences

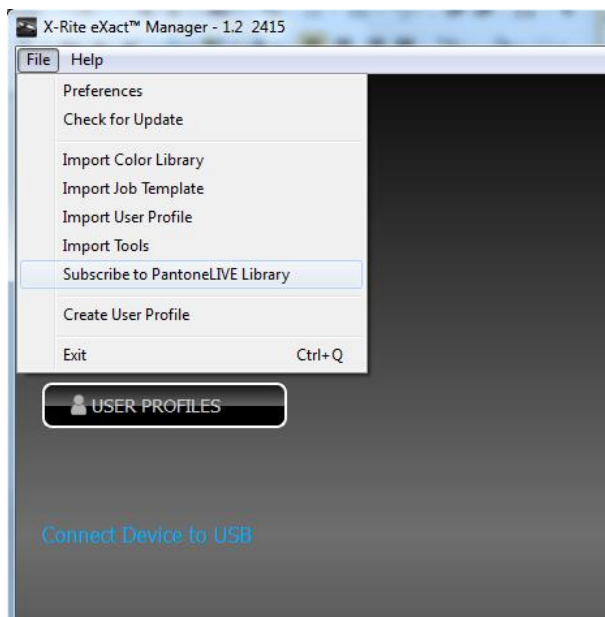


In the eXact Manager Preferences window, type your My X-Rite credentials as well as the PantoneLIVE server address (<https://ws.pantonelive.com>).

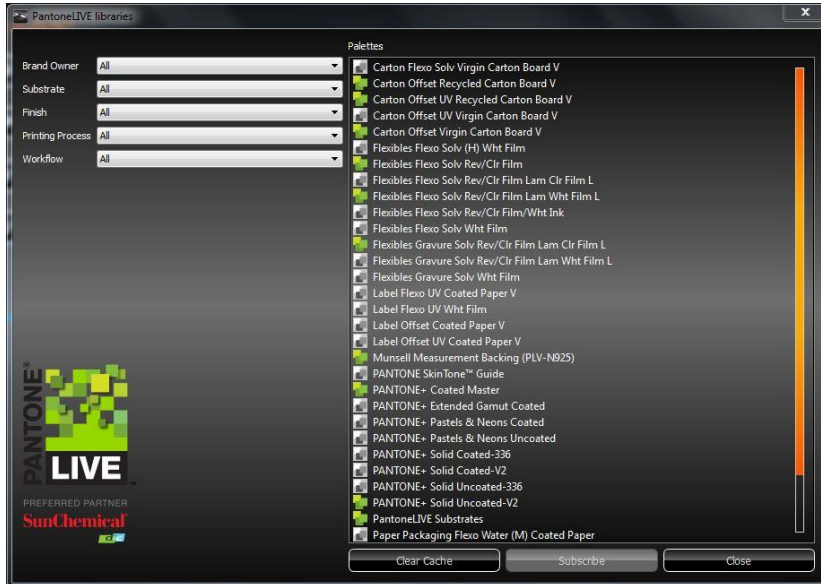


Click OK to close the window.

Back in the eXact Manager Menubar, Click File>Subscribe to PantoneLIVE Library



The PantoneLIVE Libraries window will open. Note that upon opening, it may take a short time to update the list of available libraries as it retrieves the data from the cloud. Chose the desired library and click 'Subscribe'.



The newly subscribed library will appear in the eXact Manager's Color Libraries pane.

