



iQCPantoneLIVE is an optional product licensed to individual iQC/iMatch users that connects to the PantoneLIVE™ server and permits downloading, updating, and managing Pantone Libraries for each PantoneLIVE™ user. Color iQC/iMatch users are connected to the PantoneLIVE™ server and/or cache through their PantoneLIVE user credentials, and have access to the PantoneLIVE™ standards through the cached Pantone Libraries as well as any PantoneLIVE™ standards imported into the iQC jobs and databases.

PantoneLIVE™ libraries and standards are encrypted and protected – use of these standards is controlled within Color iQC/iMatch to verify the user has proper and current credentials to use specific libraries/standards.

## Enabling iQCPantoneLIVE in Color iQC

Beginning with *iQC version 9.5*, PantoneLIVE™ is embedded within the Color iControl application. The previous companion application “*iQCPantoneLIVE.exe*” is no longer required or supported. All components are now included within the iQC/iMatch application, so no additional installations are required (with the exception of IslandServer if required – see section describing Island Server mode below). Systems currently using the old method should discontinue and uninstall the application – all cached libraries will need to be reloaded using the new PantoneLIVE Manager dialog (but Standards in iQC jobs and databases do not have to be reloaded).

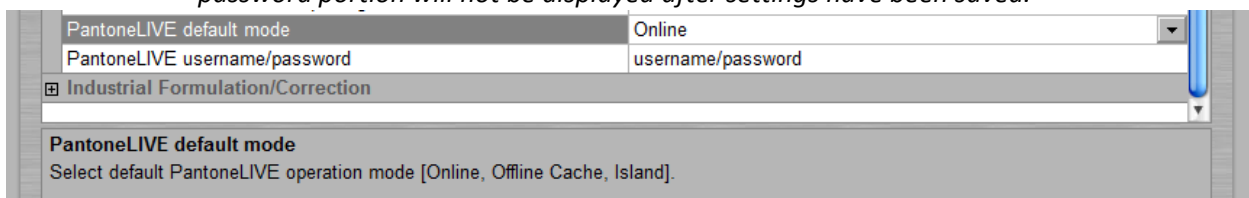
To enable PantoneLIVE™ features within iQC, modify the user settings in iQC (these settings are stored in each users HKCU registry hive) :

### PantoneLIVE default mode

- **No PantoneLIVE** – Disables any PantoneLIVE functionality.
- **Online** – Automatically logs into PantoneLIVE server at iQC startup. Updates/refreshes local cache from server as needed each time iQC is started and whenever any palette is accessed from cache.
- **Offline Cache** – Logs onto PantoneLIVE server locally (using only cached information) and provides access/verification to local palettes and standards based on the cached information. User must periodically update/refresh the cache before it expires (within 30days). By default, an iQC system set for Offline Cache will automatically attempt an on-line login/refresh after 14 days without refreshing the cache. This period may be configured in the user settings in the registry (**PantoneLIVE Refresh Interval**).
- **Island** – Allows a computer that does not have internet connection to use another computer (“Island Server”) with access to perform activation, downloads, and refreshes of the local cache via a special “iQCPantoneLIVE IslandServer” program installed on the server.

### PantoneLIVE username/password

Enter the username/password from your PantoneLIVE™ account credentials. *Note the password portion will not be displayed after settings have been saved.*



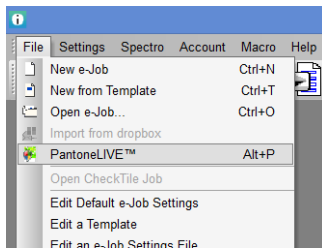


## Connecting to PantoneLIVE™ Server/Cache

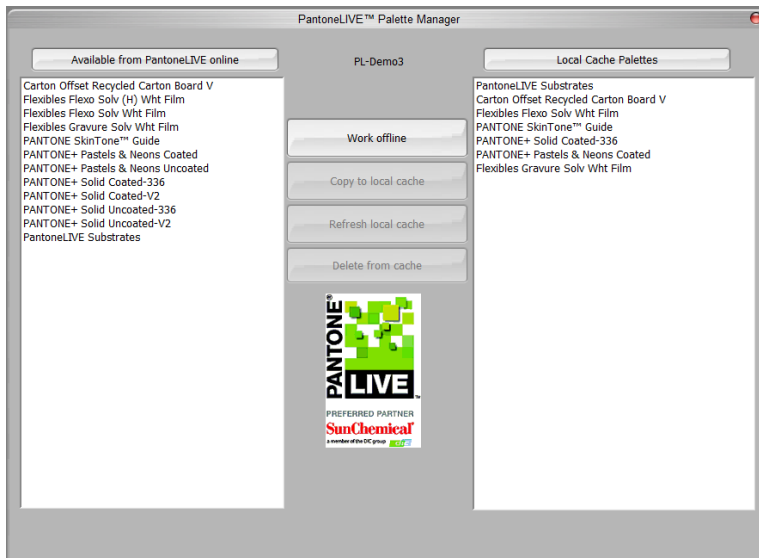
Color iQC automatically attempts to log into PantoneLIVE using the default mode and credentials each time it starts up. Any errors in connecting will be displayed at startup. You may also log into the server, or temporarily change the login from cache to online mode after startup by using PantoneLIVE Palette Manager (available from the <Files> menu). A PantoneLIVE account must be activated before it can be used... this requires an activation code from X-Rite/Pantone to be included with the logon process. If this activation is required, you will see an activation button and edit box in the PantoneLIVE Manager dialog allowing you to enter and activate your PantoneLIVE account on this computer. The connection settings for PantoneLIVE server URL and port default to the standard values, but if necessary these can be modified with additional registry/environment settings (contact X-Rite applications support for information on how to make these changes).

## PantoneLIVE™ Palette Manager

The <File> menu item <PantoneLIVE> provides access to the PantoneLIVE™ server and manages the local cache contents.



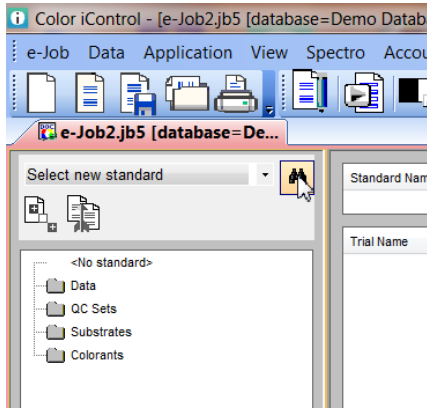
You may select one or more palettes available to your account from the server and copy them to your local cache, refresh local cache contents, and delete palettes no longer needed from the local cache.



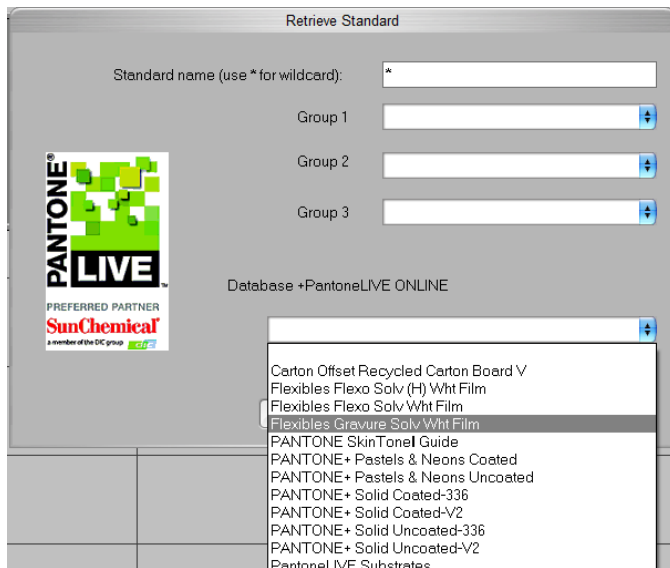


## Using iQCPantoneLIVE libraries

Pantone libraries are available to the iQC user to recall Pantone Standards into jobs. This is done by using the “Retrieve Standard from Database” icon on the QCTreeView.



If iQCPantoneLIVE is enabled, the dialog will include an iQCPantoneLIVE icon, and the database dropdown will list all of the PantoneLIVE™ libraries available to this user. Note that the libraries available will depend on whether you are using online or offline cache connection ... with offline cache you will only see libraries in your current cache. With online connection, all available libraries will be displayed, and selecting an online library will automatically insert it into your local cache while retrieving it.

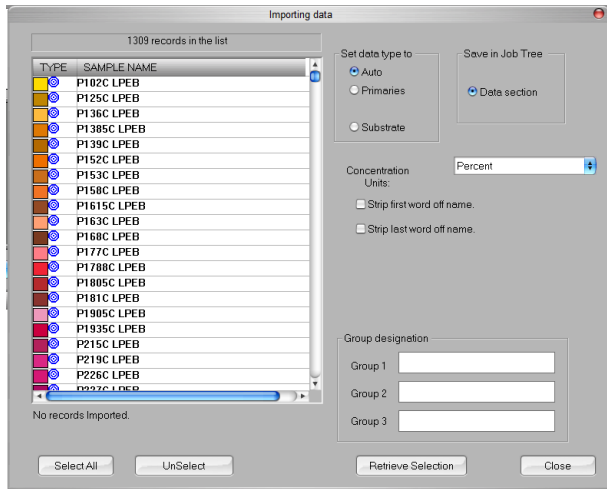



You may select a PantoneLIVE™ library to retrieve one or all standards from the library into the current job. To select a specific standard, enter its complete name into the Standard name edit box. You may also use wildcard “\*” in the standard name to filter the results to only show the standards that meet the filter restriction (ie: “P34\*” would only list the standards that begin with “P34”). An import dialog will

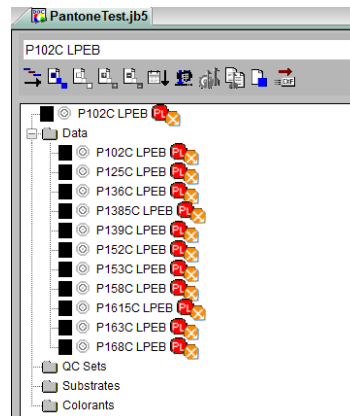
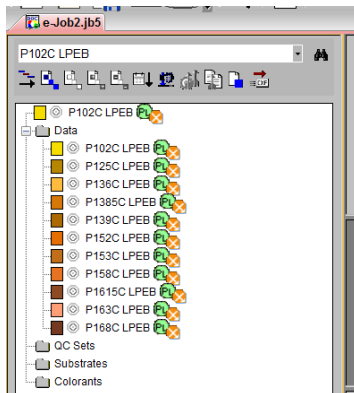


## iQC PantoneLIVE™ Installation and Use

display listing all the standards in the Library that meet the restriction – select those you want to import into the job, then click “Retrieve Selection”



PantoneLIVE™ Standards are imported into the job, and will display in the QCTreeView with a green  icon indicating they are PantoneLIVE™ standards and that this application/user is authorized to use that PantoneLIVE™ standard. Jobs which contain PantoneLIVE™ standards that are NOT validated will display with a **RED** PL icon, and the color data will appear as black (the spectral and color values will not be decrypted). To enable these standards, iQC must be connected to PantoneLIVE™ or the PantoneLIVE cache must be valid (refreshed every 30 days), and the user account must be authorized to use that standard.



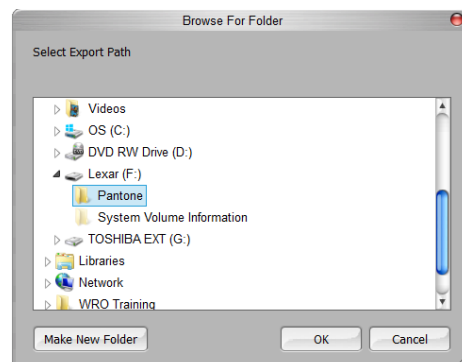
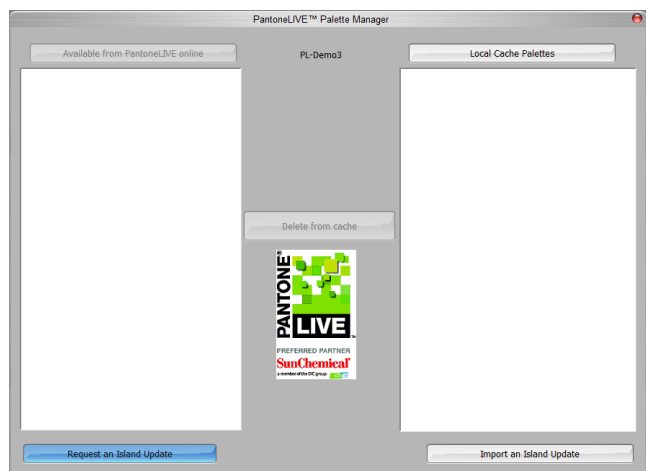


## PantoneLIVE™ Island Mode

In order to use PantoneLIVE™ standards on an iQC system that does NOT have (or is not allowed) an internet connection to PantoneLIVE™ server, Color iQC allows the user to select “Island” mode as their default PantoneLIVE™ connection method. This method operates similar to offline cached mode, where the libraries and verification are handled through the local cache. However license activation, library retrieval, and refreshing of local cache is performed on behalf of the client computer by transferring an “IslandRequest” from the local iQC system to a computer which has internet access and can perform the request (manually) on behalf of the client (using the client’s unique credentials). The updated/refreshed cache information is then passed back to the client system and imported into the user’s local cache. The transferred cache information is only valid for that requesting island user/machine.

### Local iQC Client (Island Client)

The iQC user must still enter valid PantoneLIVE username and password, and select “Island” mode. Selecting the <PantoneLIVE> menu item will open the PantoneLIVE Manager dialog, but will contain buttons for <Request Island Update> and <Import Island Update>.



<**Request Island Update**> - prompts user to browse for a folder location to copy the islandRequest files to. This may be a USB thumbdrive as shown here, or can be a shared internal network folder available to both computers (island client and island server).

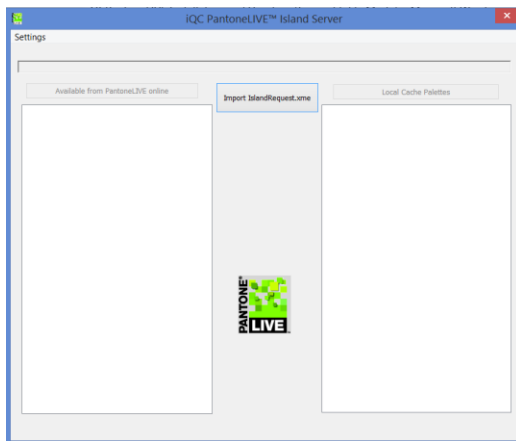
<**Import Island Update**> - prompts user to browse for a folder location to import the IslandRequest files from the server back into the user’s local cache. This import operation must be conducted within every 30 days to maintain a valid cache.



## iQC PantoneLIVE Island Server

An accessible computer that has internet access may be designated as the IslandServer (note: this computer does not have to be a Windows “Server”). The IslandServer may be used to host multiple Island Clients within the company infrastructure. The Island Server computer must install the package “**iQCPantoneLIVEIslandServerSetup.exe**” available in the PantoneLIVE folder of the Color iControl installation CD (or in the support folder of the installed Color iControl system).

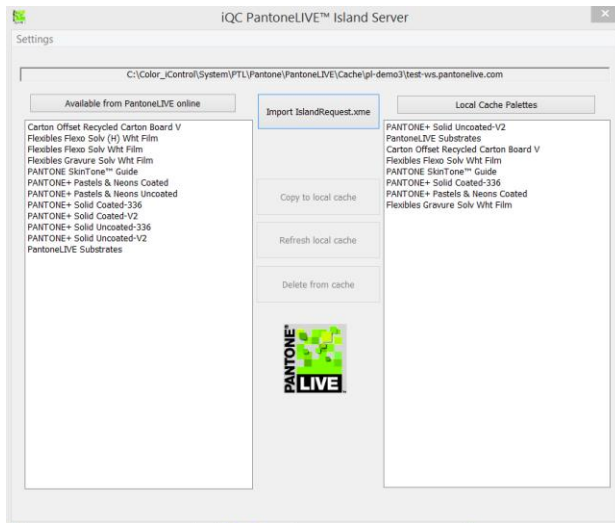
Running this program on the Island Server allows importing an IslandRequest.xme file from an Island Client, logging into PantoneLIVE™ using the encrypted credentials in the request file. The IslandServer user does not need to know the PantoneLIVE™ credentials of the island user.



Once imported, the server will use the credentials to log into the server, and the Island Server application can manage the user’s IslandRequest cache (copying new palettes, refreshing palettes, deleting palettes). When completed, the IslandServer user may import additional Requests from other users or exit the program... the information in the IslandRequest Cache is ready to be transported back to the Island Client machine to import. If the IslandRequest location was a shared folder available to both computers, the import can be performed by the iQC user without the need for transporting media.

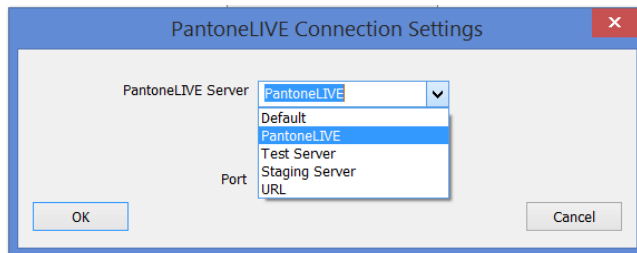


## iQC PantoneLIVE™ Installation and Use



### iQC PantoneLIVE Island Server Settings

The iQCPantoneLIVEIslandServer application contains a menu for <Settings>. This should normally not be necessary, since all connections through PantoneLIVE already supply standard defaults. However, the settings dialog allows the IslandServer to temporarily modify the Server URL and Port number if required.



Only change these settings if directed to do so by Pantone support engineers.



## iQC PantoneLIVE Advanced Settings

While PantoneLIVE is preconfigured for accessing the PantoneLIVE server using default settings, there are occasions such as development, testing, or specialized environments where alternate parameters may be needed.

Registry values in HKCU and/or Windows Environment variables can be used to modify default behavior:

In **HKCU/Software/X-Rite/Color\_iControl/Preferences/Job Defaults/**

**PantoneLIVE Server** (text string containing an empty string, a single digit, or a url)

“0”= use environment variable (see below)

“1”= normal PantoneLIVE server url (or empty string)

“2”= Test Server url

“3”= Staging Server url

“special URL address”

**PantoneLIVE Port (integer value)**

“0”= normal default server port

“nnnn” = alternate Port to use for webservice communications

Environment variables may also be used

PANTONELIVE\_SERVER (set to one of “live”, “test”, or “staging”)

PANTONELIVE\_STAGING\_SERVER (set to URL to be used with “staging” setting above)

PANTONELIVE\_PORT (set to port number)