

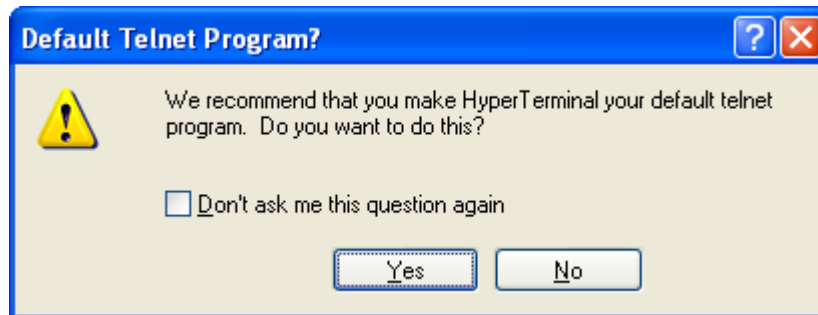
7000A to PC Connection Test Using Hyper Terminal

This document will walk you through testing the connection of your ColorEye 7000A to the PC. To begin, on your PC go to:

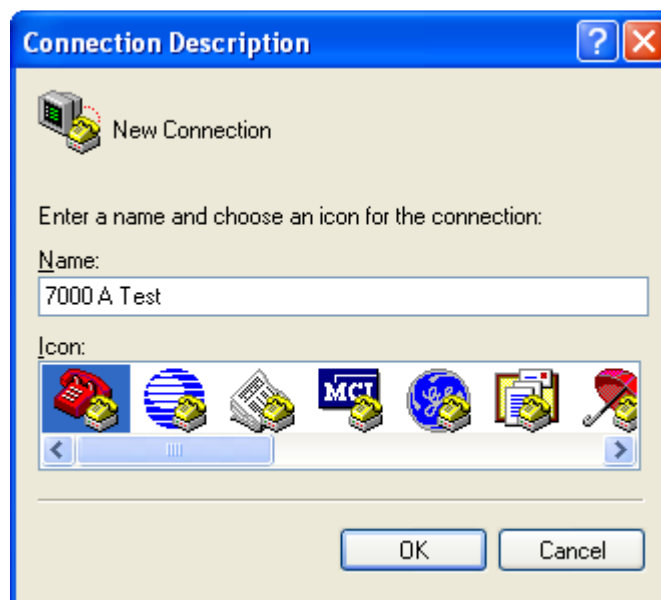
Start/All programs/Accessories/Communication/Hyper Terminal

Select "NO" at the screen shown below

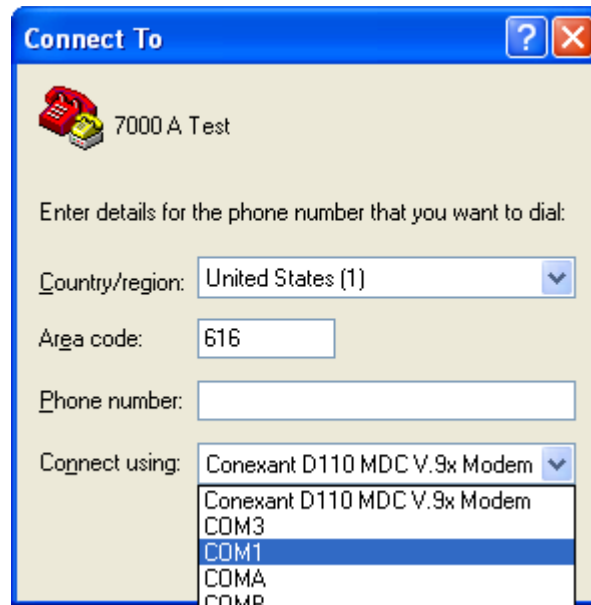
Note: you may be presented with a screen that asks for your location information. Type in your area code and hit "OK"



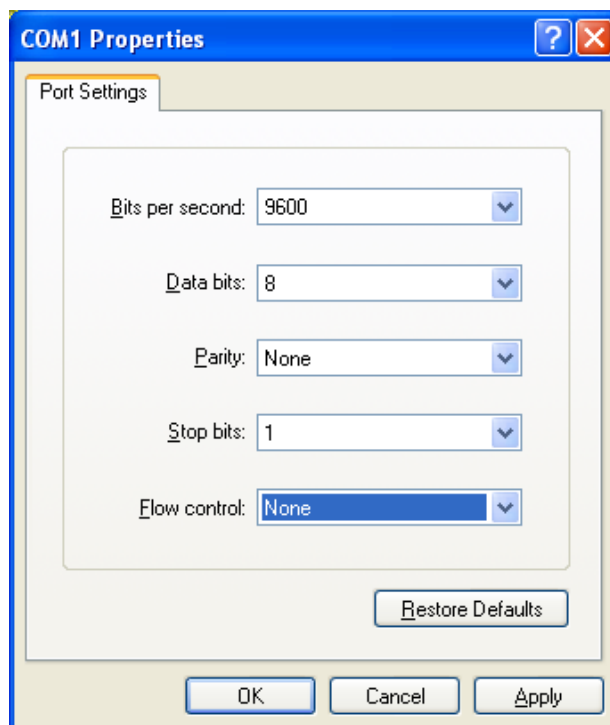
Type a name for the connection (e.g. 7000A test) and click "OK"



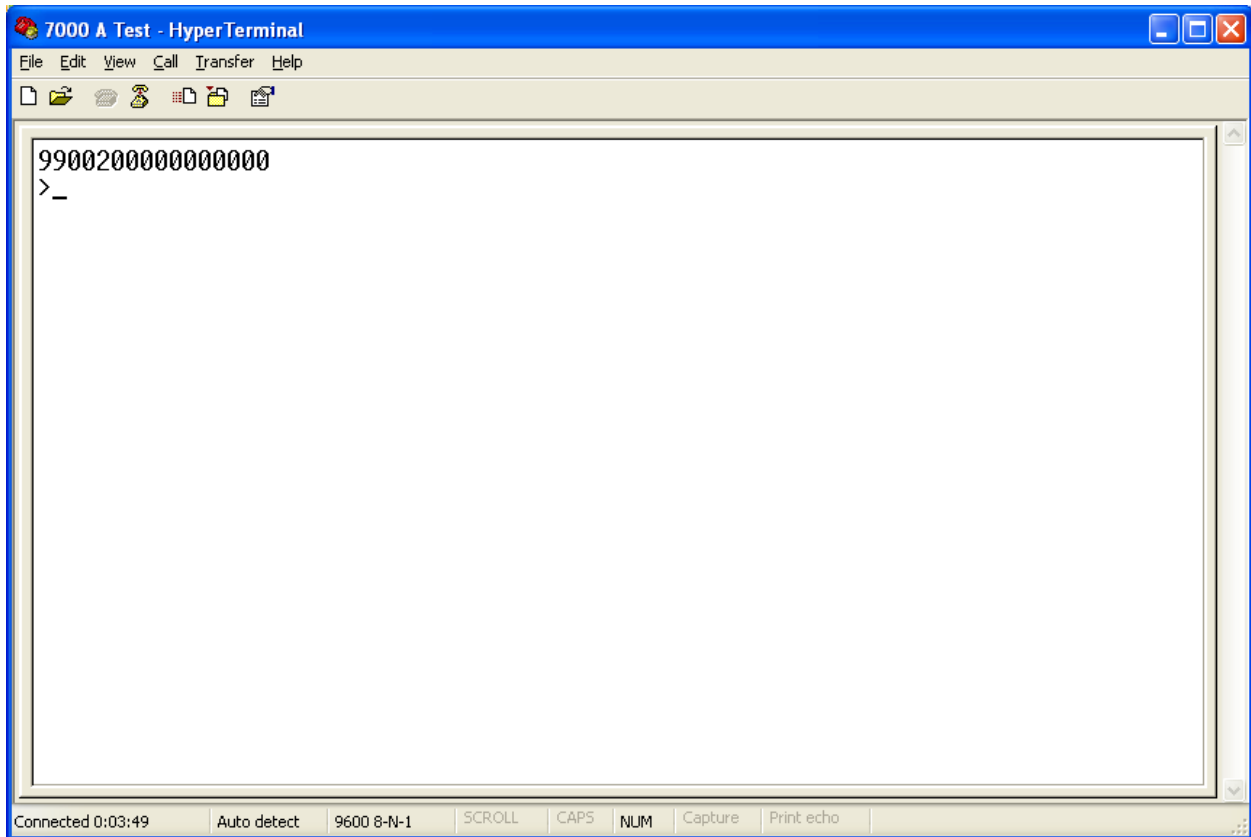
Select the correct com port (the com port the instrument is physically connected to on the back of the PC), and Click “OK”.



Select 9600 bits per second and None for Flow Control from the respective dropdown menus. Leave Data bits, Parity, and Stop bits as shown below, and click “Apply” then “OK”



You will be at a blank Hyper Terminal Screen with a blinking cursor. At this screen type a capital “S” and hit enter (you will not see what you type and will see what was returned after hitting enter). The fifteen-character Status Code (or a variation of it) should appear as shown below.



The connection of the instrument to the PC has been established, once you have returned the desired fifteen-character Status Code.

In the event that a Status Code is not returned this indicates that the instrument has not connected. You will want to confirm the correct com port and settings have been configured for this Hyper Terminal session. Additionally, you may need to use a different communication cable or try this exercise with the instrument connected to a different PC (with a known good com port on it). In the event that another PC is not available, you will want to verify that your com port is operating properly by going to Control Panel/System/Hardware/Device Manager. The connection of the instrument to the PC has been established, once you have returned the desired Status Code. In the event that the suggestions above do not result in producing a Status Code, contact X-Rite Technical Support for further assistance.