

# Color Engine Pilot 14.1

Ver. 1.0

**Steven Dobbelaere**

Sr. Global Support Software Engineer



# Agenda

# Agenda

1. PantoneLIVE changes
2. CxF3 export
3. Refine Ink wizard improvement
4. Equinox improvements
5. ILS30 support
6. Miscellaneous

# PantoneLIVE changes

1

## CEP 14.1 – Simplified PantoneLIVE licensing architecture



- PantoneLIVE licenses are now sold by **X-rite**
  - PantoneLIVE license = My X-rite account + activation code
    - Subscription (PLIVE 1Yr Lic Production Apps (PLV-PRD))
    - Site license
  - Activation code used in Color Engine Pilot



- Esko is not involved anymore
  - No Esko product key required
  - No activation of PantoneLIVE in the preferences of the client applications
  - PantoneLIVE client applications (FP / AP / PE / DP) will use a PantoneLIVE API to verify if a site license is available.
- PantoneLIVE account must be re-registered in the CMS database after upgrading to 14.1!
  - Start CEP before running production!

## CEP 14.1 – Simplified PantoneLIVE licensing architecture

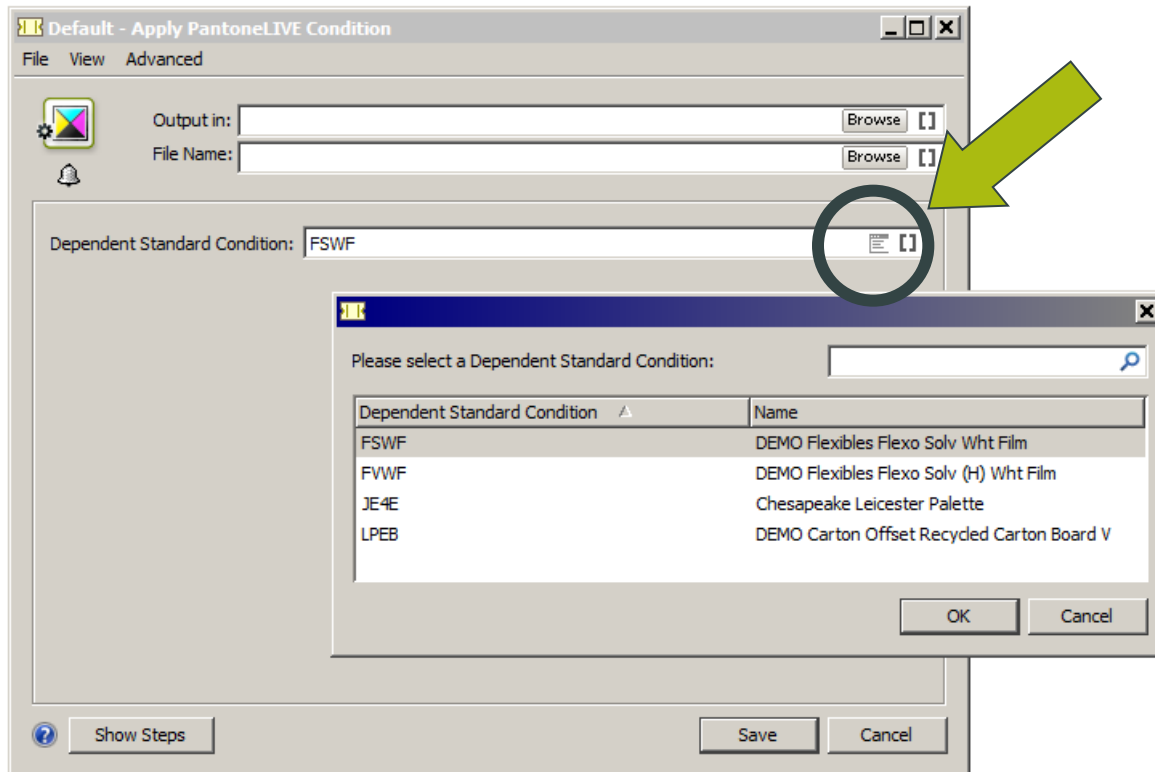
- Re-validation (update timestamp) of the PantoneLIVE account required!
  - Expiration date = 60 days
    - At start-up time of CEP
    - At start-up time of the CMSserver.exe from AE

### **SIMPLIFICATION:**

- 1 X-vite activation code
- No Esko licenses
- No PantoneLIVE preferences

# AE 14.1 – Apply PantoneLIVE Condition

- NEW AE task: Apply PantoneLIVE Condition
  - Replace non process inks with PantoneLIVE inks



## AE 14.1 – Apply PantoneLIVE Condition

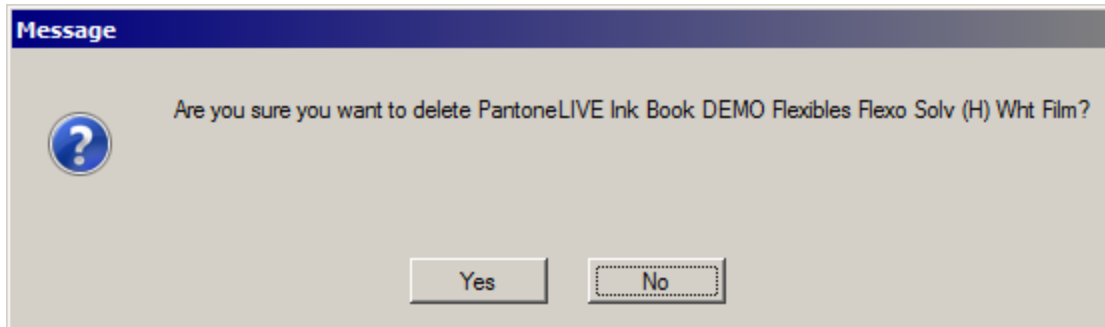
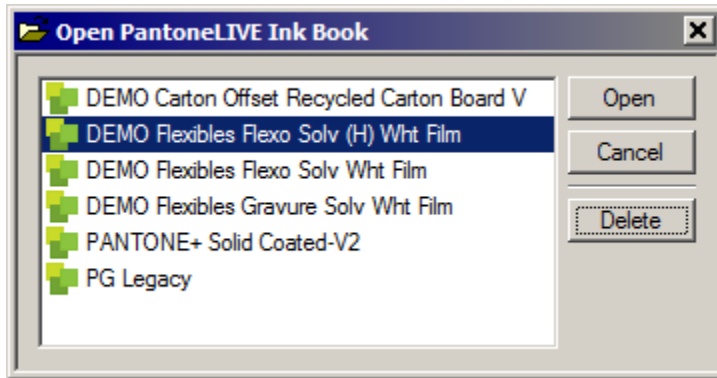
- Accepted input ink books
  - All Pantone ink books
  - All PantoneLIVE dependent standard ink books
- Ink mapping to 1 dependent standard ink book

Name check of the inks in the file	Ink book lookup	Classification	Action done by the task
Name matches pattern of PantoneLIVE master	Name found in PantoneLIVE library	PantoneLIVE master	Remap ink
	Name not found	Not PantoneLIVE	Do not remap ink + Issue warning message
Name matches pattern of PantoneLIVE dependent	Name found in PantoneLIVE library	PantoneLIVE dependent	Remap ink
	Name not found	Not PantoneLIVE	Do not remap ink + Issue warning message
Name matches neither pattern	None	Not PantoneLIVE	No action



## CEP 14.1 – Deleting PantoneLIVE ink books

- NEW! Delete a PantoneLIVE ink book



CxF export

2

## CEP 14.1 – CxF export

- CxF= exchanging ink books (with 3<sup>rd</sup> party solutions)
- Export to CxF **version 3** only

Note: Tints are NOT exported!

	IMPORT	EXPORT
CEP 10.x	CxF 2.0	CxF 2.0
CEP 12.1	CxF 3.0	x
CEP 14.0	CxF 3.0	x
CEP 14.1	CxF 3.0	<b>CxF 3.0</b>

# Refine Ink wizard

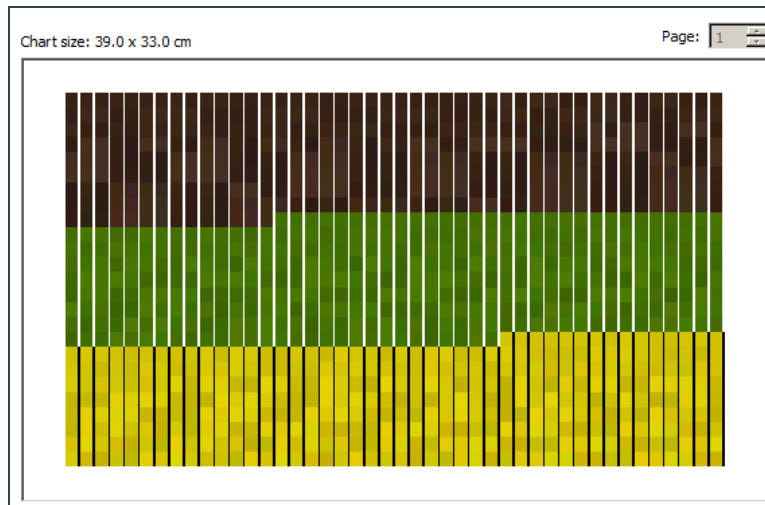
Add extra patches to fill page

3

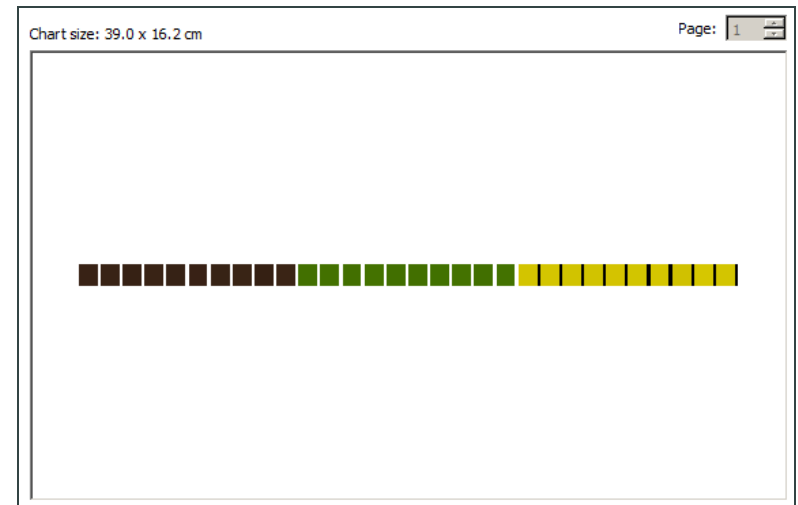
## CEP 14.1 – Add extra patches to fill page

- Default behavior in CEP14.0 -> fill the page with patches
  - Not always desired, e.g. if you have only a few patches to refine
- New option in CEP 14.1: “Add extra patches to fill page”

CEP 14.0



CEP 14.1



# Equinox Improvements

Show LabCH of the target

Black generation for CMYK spot builds

# 4

# ArtPro and PackEdge – Equinox Refine Tool

- The refine color build tool now shows the original values:

The screenshot shows the 'Refine PANTONE 100 C' dialog box. It features a color selection area with three numbered options (1, 2, 3) and a large yellow color swatch. Below this is a table of color values and checkboxes for 'Fix Values' and 'New Values'. A red box highlights the 'Original Ink' row in the table.

	C %	M %	Y %	K %	O %	G %	B %	ΔE	L	a	b	C	H
Original Ink:									92.0	-7.5	65.8	66.2	96.5
1 Best Match:	0	0	73.3	0	0	2.4	0	1.5	90.0	-6.3	65.1	65.4	95.5
2 Current Values:	0	0	73.3	0	0	2.4	0	1.5	90.0	-6.3	65.1	65.4	95.5
Fix Values:	<input type="checkbox"/>	<input type="checkbox"/>	<input type="checkbox"/>	<input type="checkbox"/>	<input type="checkbox"/>	<input checked="" type="checkbox"/>	<input type="checkbox"/>						
3 New Values:	2.8	0	73.7	0	0	<input type="text" value="0"/>	0	1.8	90.0	-5.4	65.0	65.2	94.7

Buttons: Reset to Best Match, Reset to Stabilized, OK, Cancel

# Black generation for CMYK spot builds

- Choose between 2 black generation options:
  - Minimal Black
  - Maximum Black

Settings for Spot Color Linework and Images

Default Conversion Settings

Stabilize Color Builds  Convert Opaque Inks **Black Generation: Minimal Black**

Convert Unregistered Inks **Delta E Formula: ΔE 2000**

Stabilize Settings...

Reapply Conversion Settings

Color builds:

Ink	Spot Color	Ink Book	Conversion Type	C	M	Y	K	O	G	B	ΔE	Strategy
	PANTONE 100 C	PANTONE+ Solid Coated	Best Match	0	0	73.3	0	0	2.4	0	1.5	
	PANTONE 200 C	PANTONE+ Solid Coated	Best Match	0	98	0	16.1	65.9	0	0	0	
	PANTONE 300 C	PANTONE+ Solid Coated	Best Match	100	0	0	0	0	0	54.1	2.1	



## Black generation for CMYK spot builds

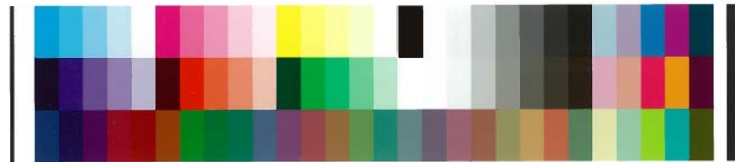
- **Maximum Black** is the default for new Equinox strategies (14.1)
- Old black generation algorithm preserved for <14.1 Equinox strategies
  - **CMYK inkset**: Minimal Black
  - **CMYK+ with OGB disabled**: Maximum Black
- Use case:
  - CMYK ink set
    - Maximum black reduces the TAC
    - Maximum black reduces sometimes the number of channels
    - The color builds are easier and more economical to print

ILS30 support

5

# ILS 30 support

- Support for the new SpectroProofer-UVS (ILS30) in v14.1
  - Only in combination with Pack Proof (not FlexProof/e)!
- ILS30 features
  - Supports the following measurement conditions: M0, M1 and M2
  - support up to 50 percent more patches per scan
  - slightly faster measurement times
- The ILS30 and ILS20 charts are not compatible!



ILS20

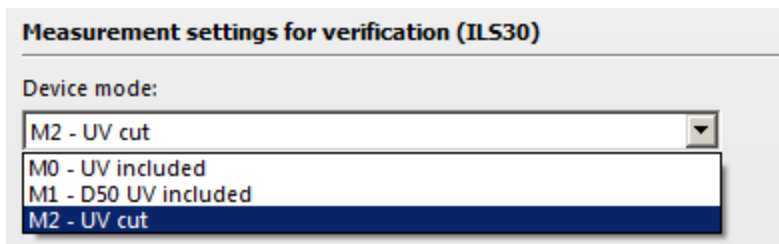


ILS30

# ILS 30 support

- Enabling the ILS30 in Color Engine Pilot
  - Why? CEP needs to know which type of charts to generate. The proof server doesn't provide that information.
  - Add the following environment variable: **KSCOPE\_ILS30** (value=1)

- Enabling the ILS30 on the proof server side
  - Choose the correct measurement condition



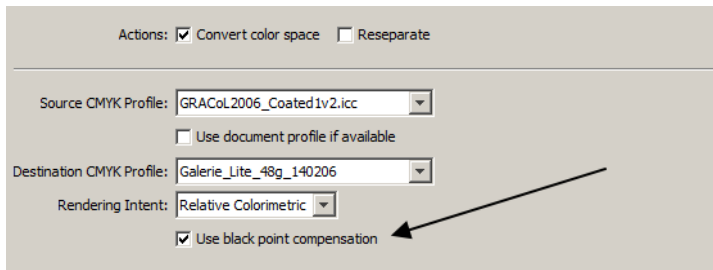
- Ignore this option in case of a ILS20 (always M0)
- Read KB (170044850) when replacing the ILS20 with the ILS30:
  - <https://wiki.esko.com/display/KBAS/KB170044850%3A+Pack+Proof+-+How+to+switch+between+ILS20+and+ILS30+measuring+devices>

Miscellaneous

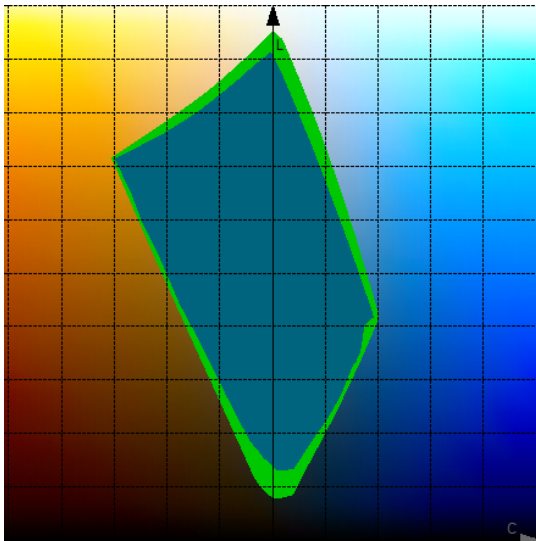
6

# Bits and bytes

- AE: Convert colors with Equinox
  - NEW: flatten document option
- AE: Manage color
  - Clear cache during activate server
    - To take advantage of the latest developments in ink saving algorithms. In case of an activate server the reseparation device link cache will be cleaned (and recalculated when needed)
- AE: Manage color
  - NEW: Convert color space action → Use black point compensation



# Bits and bytes



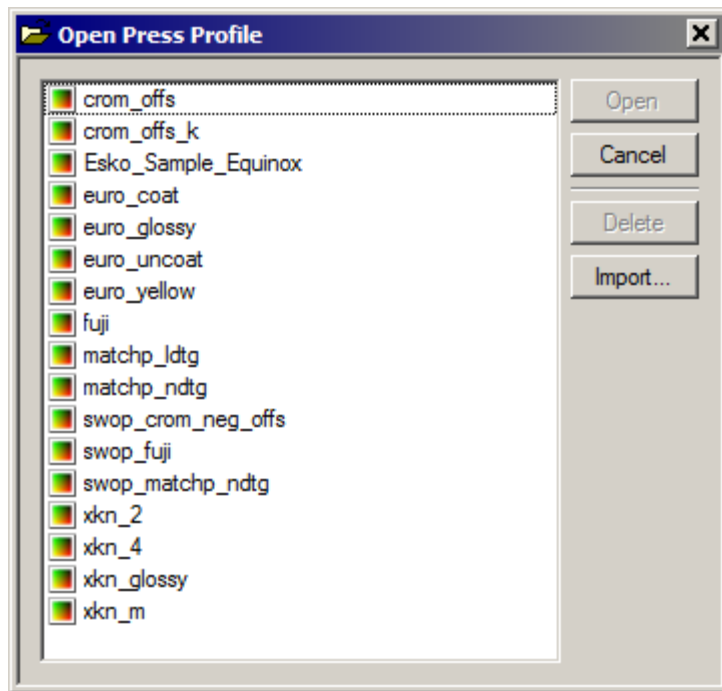
Green= source  
Blue= destination



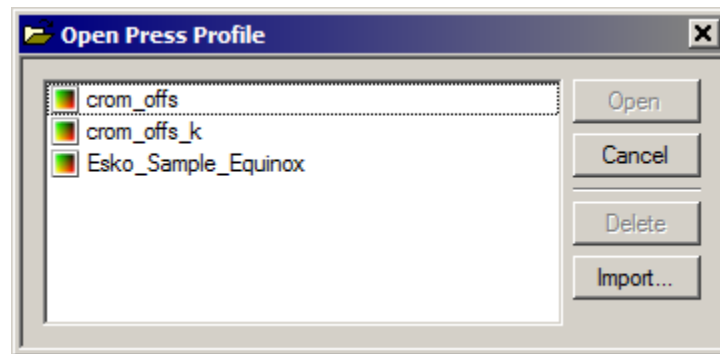
# Bits and bytes

- CMS: Clean up of old profiles and device links (if not used!)
  - Done during the post install

14.0



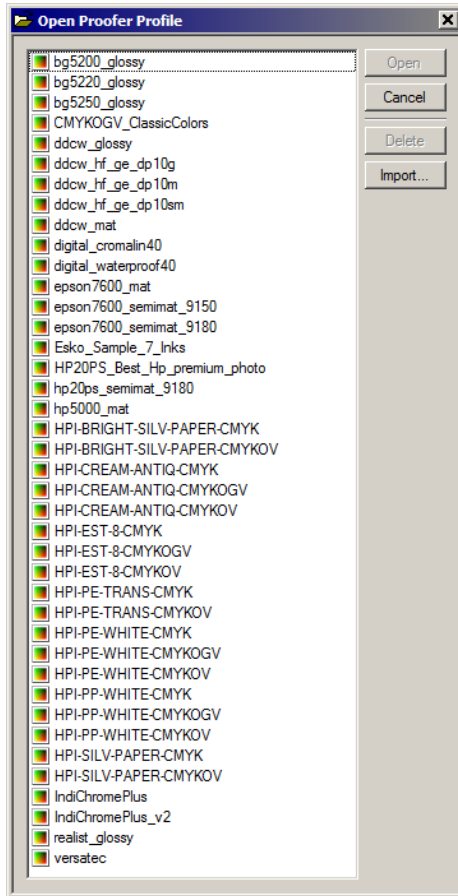
14.1



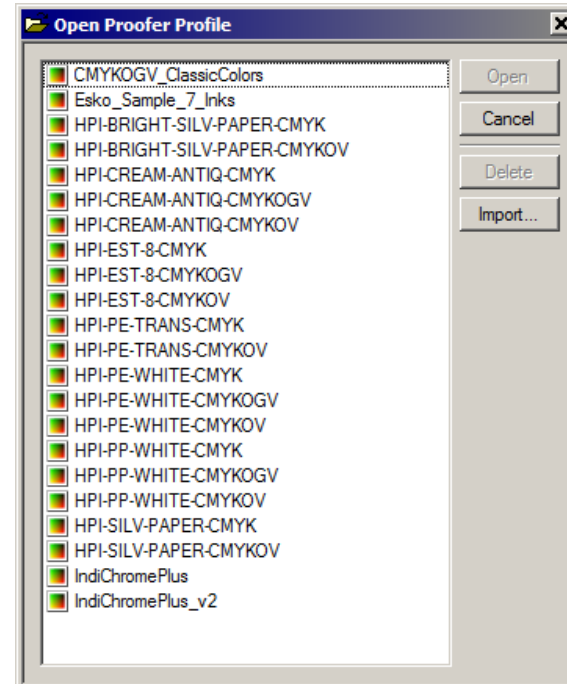


# Bits and bytes

## 14.0



## 14.1



ESKO\*

