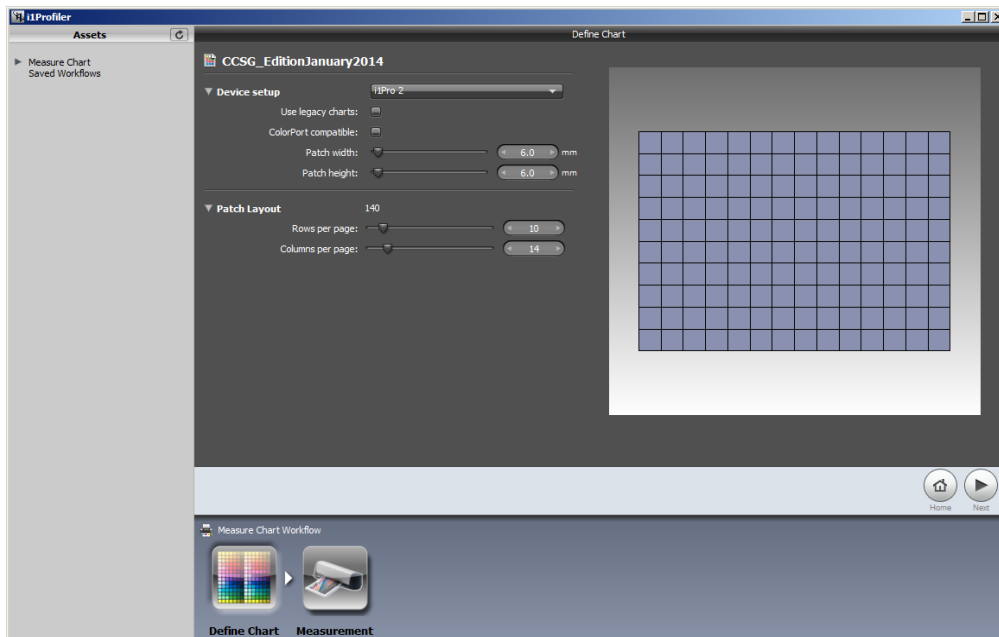


## Create Custom Reference Data for ColorChecker SG and 24

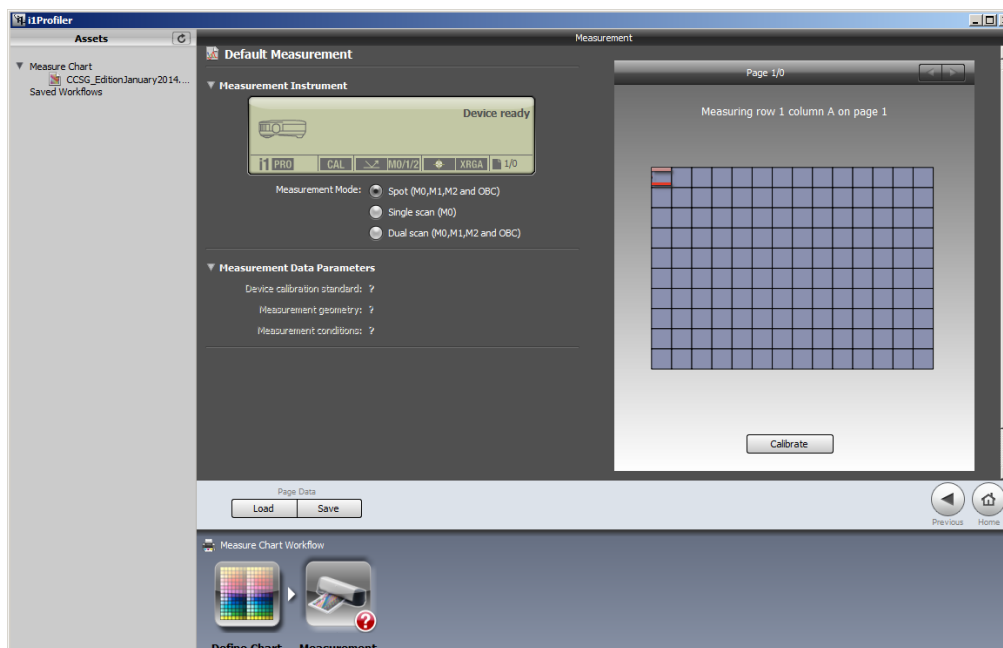
This is a step-by-step instruction on how to create custom Reference Files for a ColorChecker SG or ColorChecker 24 chart, and how to apply them for Scanner Profile creation in i1Profiler (V 1.6).

### 1. Measure your ColorChecker Chart

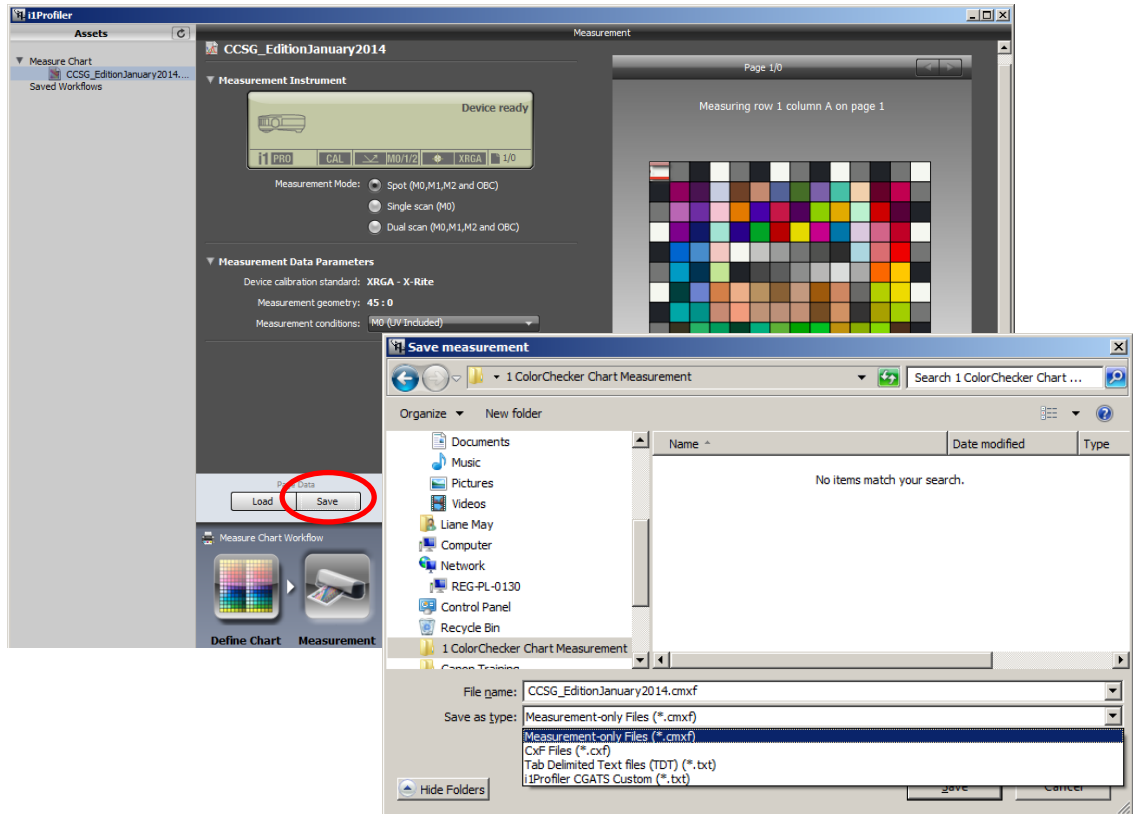
- Connect your measurement device (i1Pro or i1Pro 2)
- Launch i1Profiler, select **Advanced User Mode**
- Select workflow option **Measure Chart**
- In step **Define Chart** select your type of measurement instrument
- Then set number of rows and columns; for CCSG use 10 x 14, for CC 24 use 4 x 6



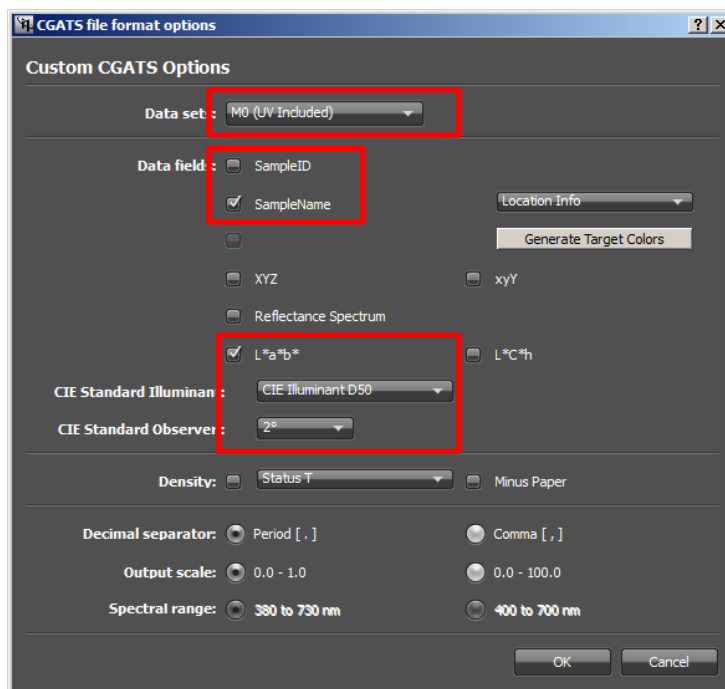
- Go to next step **Measurement** and select measurement mode **Spot (M0, M1, M2 and OBC)**
- Calibrate your instrument; click on **Calibrate** in the measurement preview area
- Measure your chart carefully; use the spot measurement position accessory for your device



- Once finished, save your measurement data first in i1Profiler's **.cmxf** format (contains all three sets of spectral measurement data M0, M1, M2), apply a meaningful file name, e.g. include the production edition date of your chart.



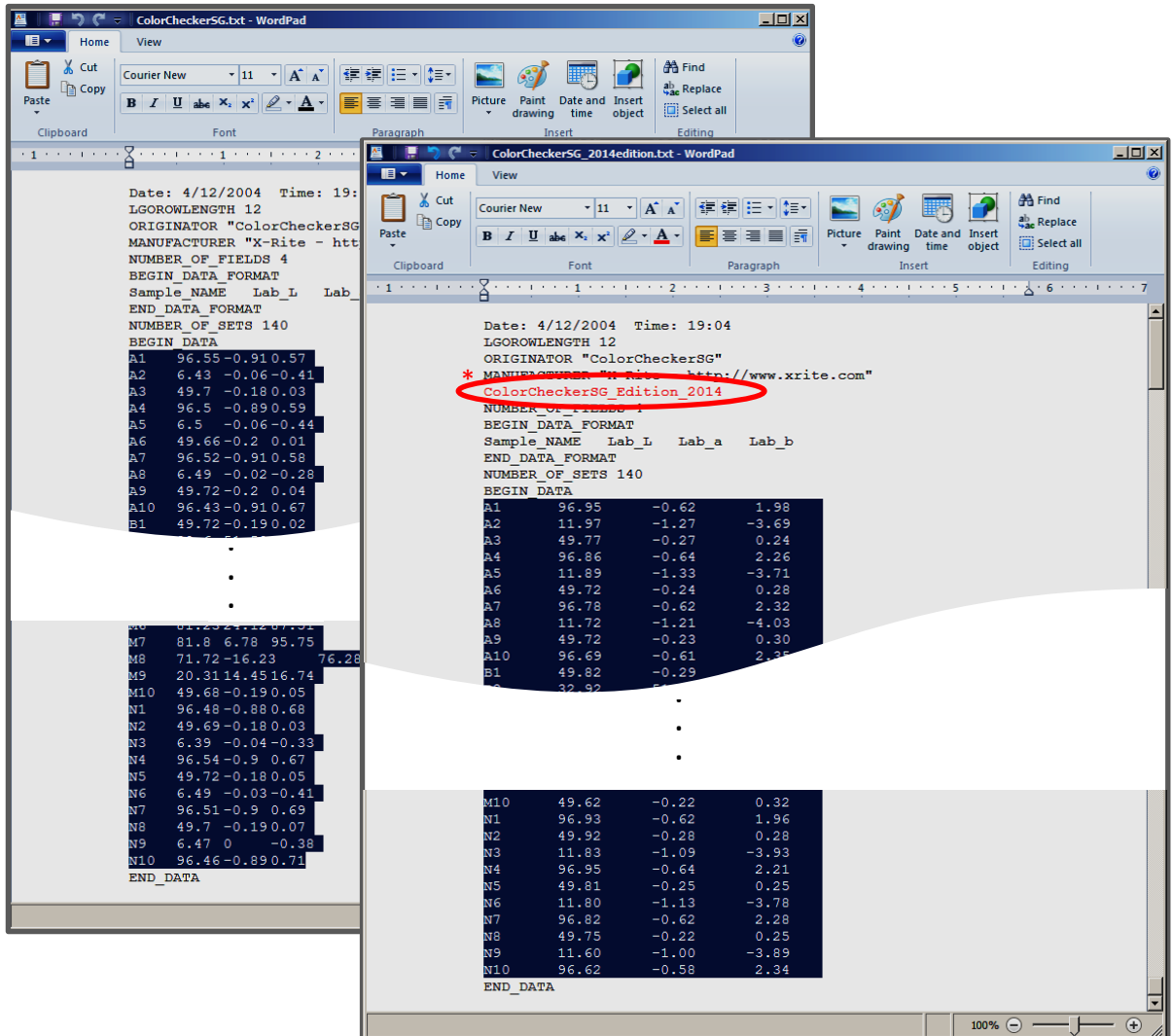
- Now save your measurement data again, select the option **i1Profiler CGATS Custom (.txt)**; in appearing window select following export settings:



*Note: Neither the used substrates nor the used pigments for the ColorChecker Charts contain optical brighteners, so you can export and continue with M0 measurement data.*

2. Apply your custom Reference File for Scanner Profiling

- On Windows go to **C:\ProgramData\X-Rite\i1Profiler\ScannerReferenceFiles**
- On Mac go to **MacHD>Library>ApplicationSupport>X-Rite>i1Profiler>ScannerReferenceFiles**
- Depending on type of chart go further to the folder **Color Checker SG** or **Color Checker 24**
- Create a backup copy from the contained default Reference File (e.g. rename the copy file as ColorChecker...\_Default.txt)
- Open the original Reference File (with unchanged name) in a TextEditor tool
- Now open your custom measurement file in the TextEditor
- Copy the LAB values area of your custom file (as indicated in the screenshot) and replace them in the appropriate area of the default Reference File



*\*Note: for particular identification you might want to add an entry in the header of the file, which specifies the type of reference file (e.g. add a string like ColorChecker SG Edition 2014). This will not damage the usage of the reference file for profile creation.*

- Save the modified file with it's original name in it's original folder (i1Profiler identifies the Reference File by this name)
- Close and re-launch i1Profiler and create your Scanner Profile with your ColorChecker Chart and your custom Reference File