

EYE-ONE MONITOR SOLUTIONS
Accurate color for all your
LCD, CRT and Laptop Displays



- Eye-One Display LT**
- Eye-One Display 2**
- Eye-One Pro**



eye-one[®]
color management system





Image ©2006, Andy Katz

IT'S A FACT:

out of the box, the color on your display is not as accurate as you think. Shadow details are lost, whites appear too cool or too warm. Prints aren't even close to the screen. And the color varies from one monitor to the next (like the various TV's in an electronics store).

You need to take control of your display since it's the only place to view your digital data in its native form! It is the critical first step in color management.

It's easy and inexpensive to get accurate professional color on your display. Use an Eye-One to get true color — a best first impression of your digital file and an essential element in real world color management.

Eye-One Monitor Solutions

Every Eye-One monitor solution comes complete with Eye-One hardware and Eye-One Match software. Eye-One monitor solutions accurately calibrate and profile all types of monitors, including LCD, CRT and laptops.

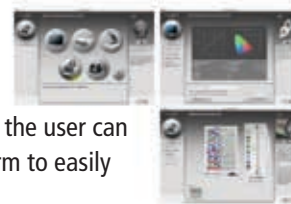


Choose from two options in hardware:

Eye-One Display (LT and 2) monitor only colorimeter or Eye-One Pro spectrophotometer, which measures not only monitors, but a host of other workflow devices such as scanners, cameras, projectors and printers.

Eye-One Match software

is the brains behind the Eye-One system. It offers the easiest-to-use interface, but highly sophisticated full professional algorithms and functionality, with simple on-screen help so the user can breeze through the calibration and profiling process. Plus, it provides the essential platform to easily upgrade functionality depending upon your chosen hardware capabilities.



Eye-One Display LT MONITOR COLOR CALIBRATION



If you want professional reliable color from your monitor, Eye-One Display LT is a great place to start. Eye-One Display LT calibrates your monitor and adjusts the color onscreen, so your images remain true with just a few simple clicks.

Eye-One Display LT is an easy-to-use monitor calibration tool designed to meet the needs of cost-conscious creative professionals, as well as discerning digital imaging enthusiasts. And, if you later decide you want more advanced functionality, you can easily upgrade your system to the Eye-One Display 2, the award-winning professional monitor calibration tool preferred by professional photographers and designers. All you'll need to do is purchase an upgrade code to your software.

- Gray balance optimization for more neutral and better defined grays
- Ambient Check: Check ambient light to determine optimal room lighting for color-critical work
- Profile reminder to ensure true and reliable color over time
- Push Button Calibration (PBC): One-step profiling for industry leading monitors
- Before and after images show instant results



Eye-One Display 2

PROFESSIONAL MONITOR CALIBRATION

Eye-One Display 2 sets the new standard, delivering unparalleled functionality for high-end professional monitor calibration and profiling results. The award-winning Eye-One Display 2 delivers unrivaled color controls including Workgroup Match, Ambient Check and Match, Push-Button Calibration and Validation – all essential tools for professional photographers and designers to attain accurate color throughout the digital workflow, whether in their own studio or in a collaborative production environment.

- Gray balance optimization for more neutral and better defined grays
- Highest sensitivity in dark areas for better control in shadow detail
- Workgroup Match: Utilize reference profiles to match all monitors in your workgroup
- Unlimited gamma white point and luminance settings including native gamma and measure luminance as target
- Ambient Match: Check ambient light and adapt profiles for different ambient light environments
- Validation: Monitor Validation and Trending Graph
- Profile reminder to ensure true and reliable color over time
- Push Button Calibration (PBC): One-step profiling for industry leading monitors
- Before and after images show instant results

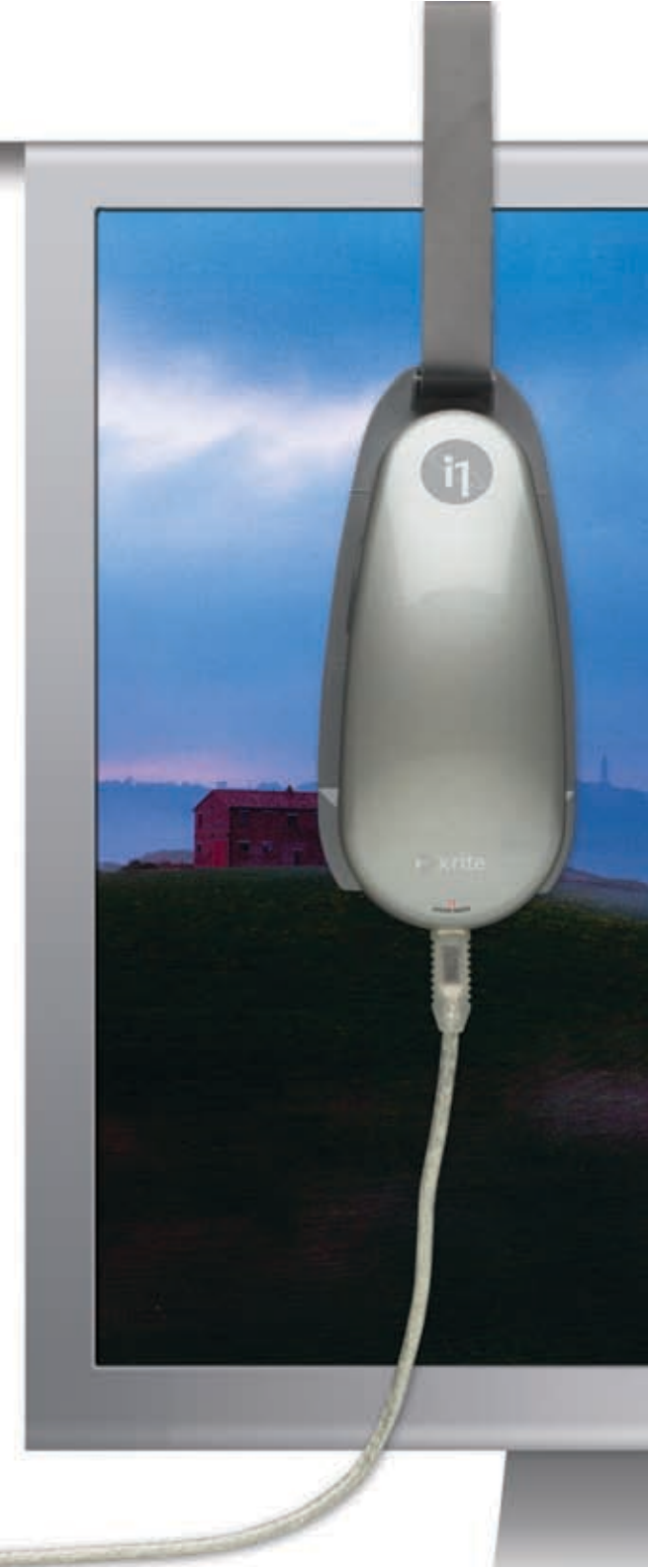


Eye-One Pro

ONE DEVICE DOES IT ALL

Every Eye-One Pro solution includes an Eye-One Pro spectrophotometer which provides all the same monitor profiling functionality as the Eye-Display products, plus the ability to calibrate and profile so much more. It is an essential tool for those looking to color manage their entire digital workflow – from monitors, to digital cameras, to scanners, to printers to projectors. Plus, with an Eye-One Pro you can measure and capture spot colors and ambient/flash light.

- Gray balance optimization for more neutral and better defined grays
- Highest sensitivity in dark areas for better control in shadow detail
- Workgroup Match: Utilize reference profiles to match all monitors in your workgroup
- Unlimited gamma white point and luminance settings including native gamma and measure luminance as target
- Ambient Match: Check ambient light and adapt profiles for different ambient light environments
- Validation: Monitor Validation and Trending Graph
- Profile reminder to ensure true and reliable color over time
- Push Button Calibration (PBC): One-step profiling for industry leading monitors
- Before and after images show instant results



General	 Eye-One Display LT	 Eye-One Display 2	 Eye-One Pro
Target user	Budget conscious designers and photographers	Designers, Photographers, Prepress and Print Production professionals	Vertical solutions based on target audience
User level	Entry-level Professional	Professional	Professional
Main application	Professional design and photography	Professional design, photography, publishing and print production	Professional design, photography, publishing and print production
Monitor Support			
LCD	Yes ¹	Yes ¹	Yes ¹
Laptop	Yes	Yes	Yes
CRT	Yes	Yes	Yes
Specifications			
Sensor type	Eye-One Display	Eye-One Display	Eye-One Pro
Measurement sensors	4 Sensors (RGB and special pulse detector sensor) ²	4 Sensors (RGB and special pulse detector sensor) ²	Holographic diffraction grating; 10 nm optical resolution
Ambient light measurement³	Color & intensity of light	Color & intensity of light	Color & intensity of light
Operating system support	Windows 2000 & XP Windows x64 Mac OS X 10.3 or higher	Windows 2000 & XP Windows x64 Mac OS X 10.3 or higher	Windows 2000 & XP Windows x64 Mac OS X 10.3 or higher
Software Features			
Ambient Light Check & Match⁸	Check ambient lighting conditions	Check ambient and adapt profiles for specific conditions	Check ambient and adapt profiles for specific conditions
Pushbutton calibration	Yes ⁷	Yes ⁷	Yes ⁷
Workgroup Match	No	Yes ⁶	Yes ⁶
Validation	No	Monitor Validation and Trending Graph	Monitor Validation and Trending Graph
Included software	Eye-One Match – LT version	Eye-One Match – full version	Eye-One Match – full version
User mode	Wizard	Easy & Advanced Mode Wizards	Easy & Advanced Mode Wizards
Monitor gamma choices	Predefined (2 options)	User defined	User defined ⁴
White point settings	Predefined (3 options)	User defined ⁵	User defined ⁵
Dual Monitor matching	Yes	Yes	Yes
Luminance Measurement	No	Yes	Yes
Profile support	ICC 2	ICC 2, ICC 4, Matrix profiles	ICC 2, ICC4, Matrix profiles
Calibration reminder	1 – 4 weeks (defined by user)	1 – 4 weeks (defined by user)	1 – 4 weeks (defined by user)
Optional software	ProfileMaker 5	ProfileMaker 5	ProfileMaker 5
¹ Special "Laptop" mode with unique profiling algorithms optimized for most neutral grey balance, best smoothness and highest color accuracy on laptop screens. ² Eye-One Display sensor features 4 sensors for enhanced performance. In addition to the RGB sensors, a fourth sensor detects the frequency of pulsing display sources such as CRTs to completely eliminate measurement noise. ³ Eye-One Display sensor and Eye-One Pro analyzer utilize the RGB filters plus a special ambient diffuser to accurately measure both light level and color intensity. ⁴ Users can define any gamma setting from 1 to 3, or select native gamma (for hardware calibrated monitors.) ⁵ Users can define any whitepoint from 4000 to 10,000, or define white point based on the white point of the ambient light conditions. ⁶ Users can utilize base settings from another monitor profile to ensure the best match across multiple monitors in an organization. ⁷ Eye-One Display LT, Display 2 and Pro all provide automatic calibration support for popular high end graphic arts monitors from Etzo, LaCie, Sony, NEC, Mitsubishi. (For complete list of supported models please refer to gretagmacbeth.com) ⁸ Eye-One Display LT lets graphics professionals ensure they are working in optimal lighting conditions. Eye-One Display 2 and Eye-One Pro lets graphic professionals ensure they are working in optimal lighting conditions and also adapt the monitor to match specific conditions, such as those from a lightbox.			



United States: t: +1 800 622 2384 f: +1 845 561 0267
t: +1 845 565 7660
Switzerland: t: +41 44 842 24 00 f: +41 44 842 22 22
United Kingdom: t: +44 1928 280050 f: +44 1928 280080
Germany: t: +49 61 0279 570 f: +49 61 0279 5757
Italy: t: +39 0574 527755 f: +39 0574 527671

France: t: +33 161 062 180 f: +33 134 620 947
China, Hong Kong: t: +852 2368 7738 f: +852 2368 6717
China, Shanghai: t: +86 21 5868 4348 f: +86 21 58684358
t: +86 21 6267 6180
Russia: t: +7 095 502 92 65 f: +7 095 502 92 67



gretagmacbeth.com
xrite.com

© 2006, GretagMacbeth. All rights reserved. Part. No. 985629 en

Apple, Mac, the Mac logo, Macintosh and ColorSync are trademarks of Apple Computer, Inc., registered in the U.S. and other countries. Pentium is a registered trademark of Intel Corporation. Microsoft and Windows are registered trademarks of Microsoft Corporation. All other trademarks are the property of their respective owners. Cover image ©2006 Andy Katz.

Eye-One LT is exclusively distributed as a co-branded version of PANTONE® in US and Canada. Eye-One LT is available through GretagMacbeth resellers throughout Europe, Asia and Latin America.

Specifications

EYE-ONE PRO device

Spectral measurement device, supported measurement modes: Emission: radiance measurement (monitor measurement)
Spectral analyzer: Holographic diffraction grating with 128 pixel diode array
Optical resolution: 10nm
Physical sampling interval: 3.5nm
Spectral data: Range: 380 ... 730 nm in 10nm steps
Measurement aperture: 4.5mm diameter
Interface: USB 1.1
Physical dimensions: Length 151mm, width 66mm, height 67mm (6 x 2.6 x 2.6 inches)
Weight: 185g (6.5oz)
Accessories included: Calibration plate, USB cable, flat panel holder
Data format: Spectral radiance (mW/nm/m² /sr); Luminance Y (cd/m²)
Measurement range: 0.2 ... 300 cd/m²
Short-term repeatability: x,y: +/- 0.002 typical (CRT 5000°K, 80 cd/m²)
Power supply: Device powered by USB. No additional charger or battery required. USB 1.1 high power device.

EYE-ONE DISPLAY device

Device Type: Three channel colorimetric sensor
Interface: USB data and power supply
Data format: Luminance (cd/m²), chromaticity coord. x, y (CIE 1931)
Refresh rate: Monitor frequencies: 40Hz to 150Hz
Physical dimensions: Length 84mm, width 64mm, height 35mm
Weight: Measurement device 131g, counter weight 33g
Measurement range: Luminance: Black point: 0.02cd/m²
White point: 3,000cd/m²
Illuminance: Suitable for use in Graphic Display Proofing per ISO/CD 12646 Standard
Accuracy: With respect to Eye-One Pro on reference monitor (white 6500K), chromaticity coord. x,y +/-0.004
Short-term repeatability: Luminance 0.3% at Y=75 cd/m² (white 6500K) Chromaticity coord. x,y <+/-0.001 at Y=75 cd/m² (white 6500K)
Power conditions: Power Required Powered by USB, no additional charger required USB low power class device

Eye-One LT is available exclusively through Pantone in North America.