

# ColorDesigner | PLUS



## Installation Guide



### Proprietary Notice

The information contained in this manual is copyrighted information proprietary to X-Rite, Incorporated.

Publication of this information does not imply any rights to reproduce or use it for purposes other than installing, operating, or maintaining this instrument described herein. No part of this manual may be reproduced, transcribed or translated into any language or computer language in any form or by any means: electronic, magnetic, mechanical, optical, manual, or otherwise; without the prior written permission of an authorized officer of X-Rite, Incorporated.

Patents: [www.xrite.com/ip](http://www.xrite.com/ip)

“© 2019, X-Rite, Incorporated. All rights reserved”

X-Rite®, MatchRite®, and ColorDesigner® are registered trademarks of X-Rite, Incorporated. Windows® is a registered trademark of Microsoft Corporation. All other logos, product names, and trademarks mentioned are the property of their respective holders.

## **Table of Contents**

Introduction .....	4
System Requirements .....	4
About This Manual .....	4
Important Information.....	4
Getting Help.....	5
Technical Support .....	5
Getting Started.....	5
A. Installing ColorDesigner PLUS Software .....	6
B. Installing ColorDesigner PLUS Databases .....	8
Installation.....	8
Automatic Updates.....	8
Enabling Databases.....	9
Disabling Databases .....	10
C. Activating Your Software.....	11
D. Security .....	12
Changing the Password.....	12
Accessing the Desktop.....	13
E. Importing Customer Files (optional) .....	14
F. Selecting Printer and Label Template .....	16
G. Installing Your Instrument .....	17
H. Installing the Dymo USB Label Printer .....	19
I. Configuring Auto Dispenser .....	20
J. Set Up for a Barcode Scanner.....	22
K. Set Up External Application Buttons.....	23

## Introduction

The X-Rite® ColorDesigner® PLUS software and instrument make paint matching fast and accurate. The instrument measures a customer's color sample and processes the sample's color data characteristics—also factoring in lighting conditions, mixing base, and tints. Then, the ColorDesigner PLUS software displays the paint mix formula that matches the customer's sample. All of these functions are accomplished in a matter of seconds. Each function is displayed on your computer display where the customer can view the entire process.

### System Requirements

Minimum system requirements

- Windows 7 (32 or 64 bit), RAM 2 GB
- Windows 8, 8.1 (32 or 64 bit), RAM 2 GB
- Windows 10 (32 or 64 bit), RAM 2 GB
- Monitor screen resolution of 1024 x 768
- 4 GB hard disk free
- *Note: These requirements are for ColorDesigner PLUS only. To run other applications simultaneously, the requirements are higher.*

Recommended system requirements

- Windows 7 (32 or 64 bit), RAM 4 GB
- Windows 8, 8.1 (32 or 64 bit), RAM 4 GB
- Windows 10 (32 or 64 bit), RAM 4 GB
- Pentium 4, 2.8 GHz
- Monitor screen resolution of 1024 x 768
- 20 GB hard disk free

### About This Manual

This manual is intended to provide software and general instrument installation procedures. Specific software application information is available from the ColorDesigner PLUS online help system. The instrument's documentation covers installation, operation, calibration and general maintenance.

If the system you purchased included a computer and monitor, refer to the documentation that is included with those products for specific installation procedures.

### Important Information

If you purchased a ColorDesigner PLUS turnkey system, the following software components are already installed on the computer:

- ColorDesigner PLUS application
- Paint databases
- USB instrument driver
- USB printer driver

Please retain the ColorDesigner PLUS, printer, and database modules flash drives in the event that a reinstallation is required.

## **Getting Help**

Use the ColorDesigner PLUS help system as you learn how to use the software. The help system includes step-by-step instructions for specific tasks, conceptual and reference information.

The help system uses the same technology as web pages—links to related topics, definitions, and more detailed information appear as underlined text. Click these links to move to other topics in the help system.

You'll find a Help button near the top right corner of almost every screen in ColorDesigner PLUS. Click Help to find out more about the ColorDesigner PLUS screen that is currently active.

## **Technical Support**

X-Rite's commitment to quality does not end with your product purchase. We stand behind your system with a strong commitment to customer service. Our customer service departments are fully staffed with qualified technicians to assist you via phone or fax. When placing a call, please have the following information available:

- Your software version number and instrument serial number
- Your name, company name and telephone number
- If the problem caused an error message, write the message down
- Also, write down the steps you were performing before the problem occurred
- Have the instrument and software running within reach of the telephone

### **In the U.S.**

For Instrument and Software Assistance (option 4), contact your X-Rite Authorized Representative (option 1) or Customer Service (option 3) at, Tel: 1-800-572-4626 or Fax: 1-888-826-3043.

### **In Europe**

Contact your X-Rite dealer or call 00 800 700 300 01.

### **In other regions**

Contact your X-Rite dealer or the local X-Rite office.

## **Getting Started**

Before you begin installation, make sure that you have:

- ColorDesigner PLUS software flash drive
- ColorDesigner PLUS paint support software flash drive
- Measurement instrument and cables
- Dymo printer

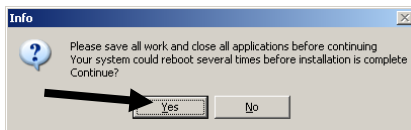
To install X-Rite ColorDesigner PLUS, follow the illustrated step-by-step instructions beginning with Section A.

**Do not plug in your instrument or printer until told to do so in these instructions.**

## A. Installing ColorDesigner PLUS Software

**IMPORTANT:** You must be logged on as an administrator or a member of the Administrators group in order to install this application on a Windows 7, 8, 8.1 and 10 system.

1. Insert the ColorDesigner PLUS software flash drive into the USB port. If ColorDesigner PLUS setup screen does not open automatically, open Windows Explorer and browse to the USB drive letter. Double-click the **Setup.exe** file.
2. A screen appears informing you that your system could reboot several times during installation. Close any open applications as suggested and click **Yes** to continue with the installation.

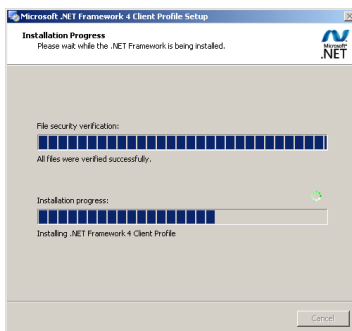


3. Microsoft .NET Framework 4 Client Profile Setup installation begins. A screen appears showing the progress of the installation.

---

**NOTE:** This installation will not occur if Microsoft .NET Framework 4 Client Profile Setup is already installed on your computer.

---

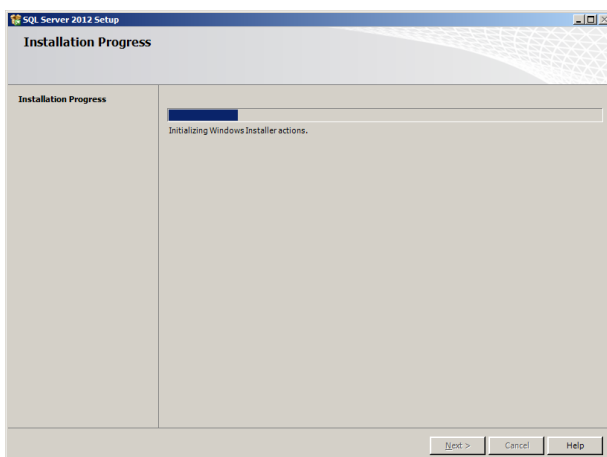


4. After .NET installation is completed, SQL Server 2012 screen appears. Follow the prompts for installation until completed. This installation can take several minutes.

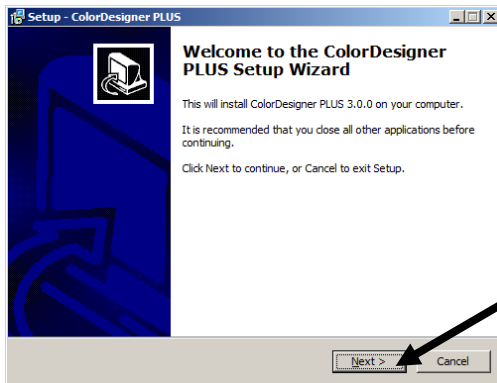
---

**NOTE:** This installation will not occur if SQL Server 2012 is already installed on your computer.

---



5. Welcome screen appears. Click **Next** to continue.

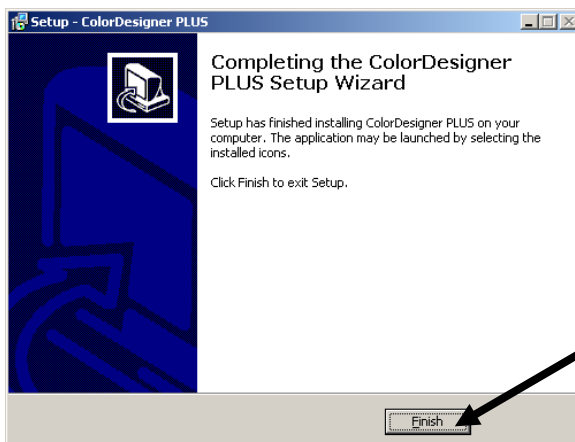


6. If you agree with the software license agreement, select **I accept the agreement** and then click **Next** to continue.



**NOTE:** You must accept the license agreement to continue with the installation.

7. At the Select Components screen, choose **Full installation** and then click **Next** to continue.
8. At the Ready to Install screen, click **Install** to continue.
9. After the ColorDesigner PLUS installation is complete click **Finish** to exit.



## B. Installing ColorDesigner PLUS Databases

---

**NOTE:** Databases are already installed if you purchased a turnkey system.

---

Procedure will vary depending on the type of installation method used. If you are installation databases from a flash drive, refer to the installation procedure. If you want to perform automatic updates, refer to the automatic update procedure. After the databases are installed, you will need to enable individual databases for use in the application. For this procedure, refer to Enabling Databases.

### Installation

1. Insert the paint support software flash drive into your USB port. If the update doesn't run automatically, double-click the USB icon in the My Computer window and then double-click the **AutoMRUpdate.exe** file.
2. The update utility prompts if you are ready to perform the update. Select **Yes** to begin the update process.
3. Follow the remaining installation instructions on your computer screen.
4. When finished, refer to the Enabling Databases procedure that follows.

### Automatic Updates


1. Start ColorDesigner PLUS by double-clicking the **X-Rite** ColorDesigner PLUS icon on the desktop.



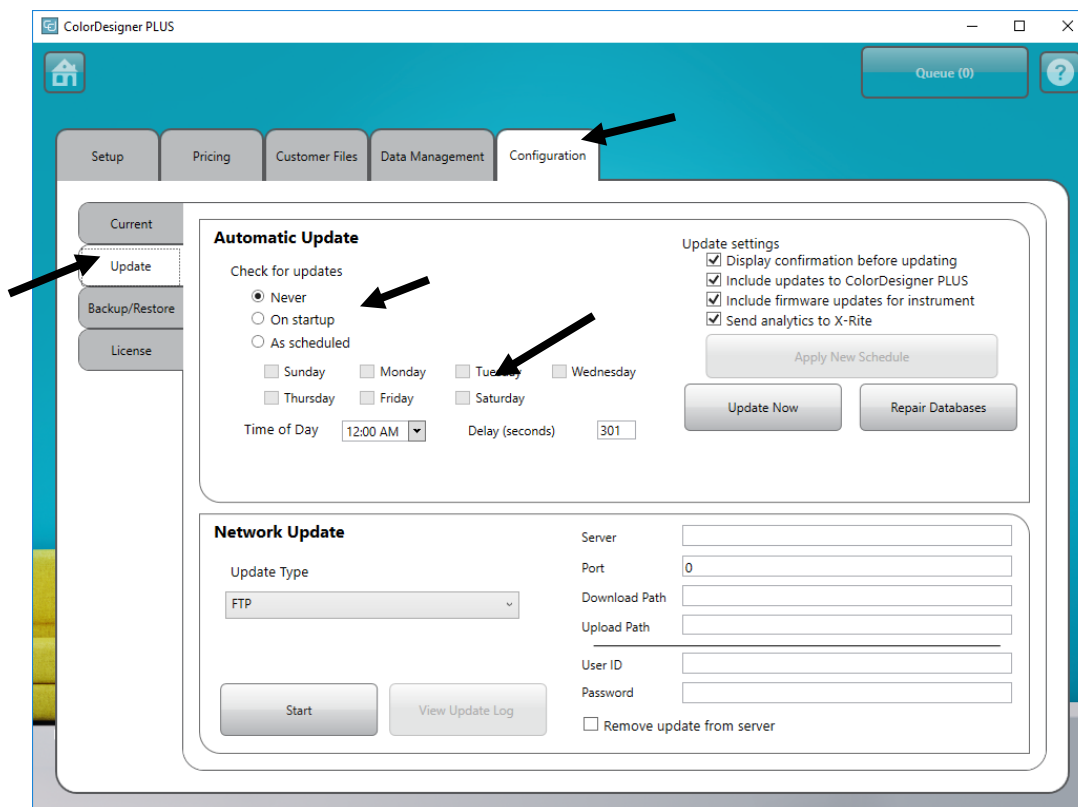
ColorDesigner  
PLUS

2. A software activation screen may appear if the software is not yet activated. At this point, you have the option to activate your software now or click **Continue** and activate later. If you decide to activate later, you will have up to 30 days to run the application in evaluation mode. X-Rite recommends that you activate your software as soon as possible. Refer to Section C, Activating Your Software for the procedure.



3. On the Main Menu screen, select the  icon in the lower left corner to bring up the Configuration menu and then click **Settings**.
4. Enter your password then click **Unlock**. The default password is **1234**.
5. Select **Configuration** tab at the top and then select **Update**.






6. Select **On startup** or **As scheduled** from the Check for updates option. If On startup was selected, advance to Step 8. If As scheduled was selected, continue with the next step.
7. Check the day of week and enter the time of day you want to check for updates. You can also set a delay in seconds before checking for updates if desired.
8. Click the **Home** button to save settings and exit Settings.

## Enabling Databases

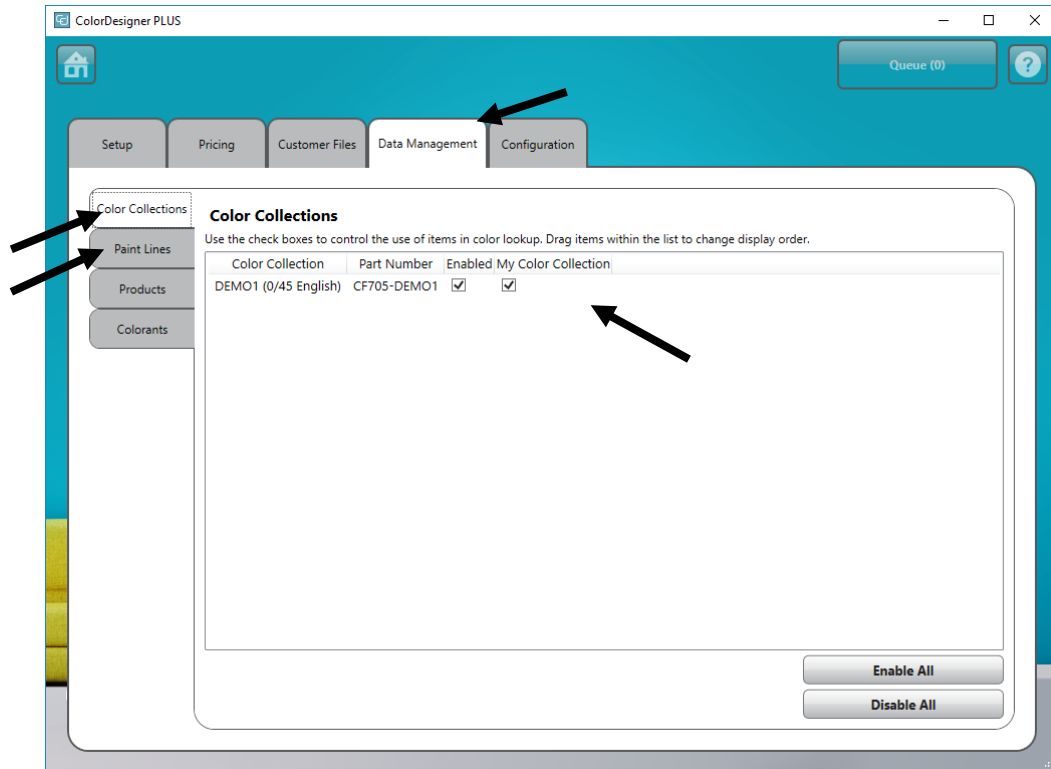
1. Start ColorDesigner PLUS by double-clicking the **X-Rite** ColorDesigner PLUS icon on the desktop.



ColorDesigner  
PLUS

2. A software activation screen may appear if the software is not yet activated. At this point, you have the option to activate your software now or click **Continue** and activate later. If you decide to activate later, you will have up to 30 days to run the application in evaluation mode. X-Rite recommends that you activate your software as soon as possible. Refer to Section C, Activating Your Software for the procedure.
3. On the Main Menu screen, select the  icon in the lower left corner to bring up the Configuration menu and then click **Settings**.

4. Enter your password then click **Unlock**. The default password is **1234**.
5. Select **Data Management** tab at the top.



6. Choose **Paint Lines** or **Color Collections**.
7. Click on Enabled box next to the database type. You can also click the **Enable All** button to enable all databases.  
To set the order in which databases appear in Color Lookup and Color Match, drag databases up or down in the list.
8. Click the **Home** button to save settings and exit Settings.

### Disabling Databases

To disable a database from use, uncheck the database in the list that you wish to remove. You can also click the **Disable All** button to move all available databases.

## C. Activating Your Software

**NOTE:** If you purchased a turnkey system, your software has already been activated.

1. Locate the ColorDesigner PLUS paint support software flash drive and find the AUI number.
2. Enter the AUI number located in the packaging into the AUI Number fields and click **Activate**.

Activate ColorDesigner PLUS

To activate your software, enter your AUI number and click Continue.  
Your AUI number can be found on your software packaging.

AUI Number:  
2400-3 000 - 0000 - 0000 - 0000

Continue Cancel

3. Enter information in the available fields and click **Register**. Your software is now licensed and this screen will no longer appear when you start up your system.

Register ColorDesigner PLUS

First Name: \*

Last Name: \*

Title:

Company: \*

Address1: \*

Address2:

City: \*

State: \*

Postal Code: \*

Country: \*

Phone:

Email: \*

Purchase Date: \*

Do not remind me to register

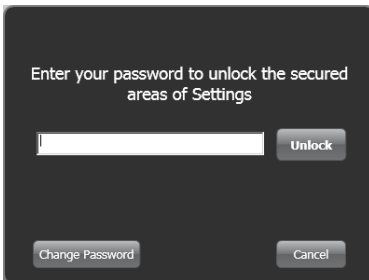
Register Cancel

## D. Security

Security has been built into ColorDesigner PLUS to prevent any unauthorized access to the Desktop. Upon installation the default Housekeeping password is "1234". It is recommended that you change the default password to maintain security.

### Changing the Password

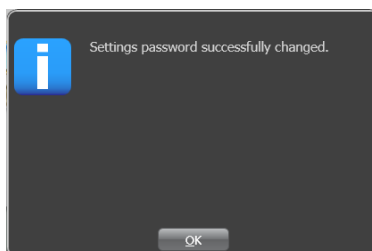
1. On the Main Menu screen, select the  icon in the lower left corner to bring up the Configuration menu and then click **Settings**.
2. Click **Change Password**.



3. Enter your old password in the appropriate field.
4. Enter your new password twice and click **Change**. Keep this password in a safe and secure place. If you lose your password, contact X-Rite Customer Service.




5. Click **OK** to finalize the password change.

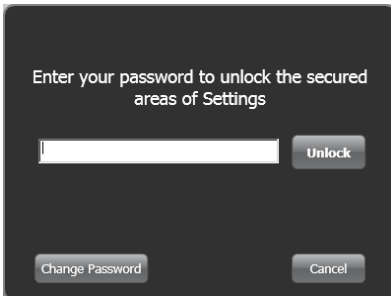


6. Click the **Home** button to exit Settings.

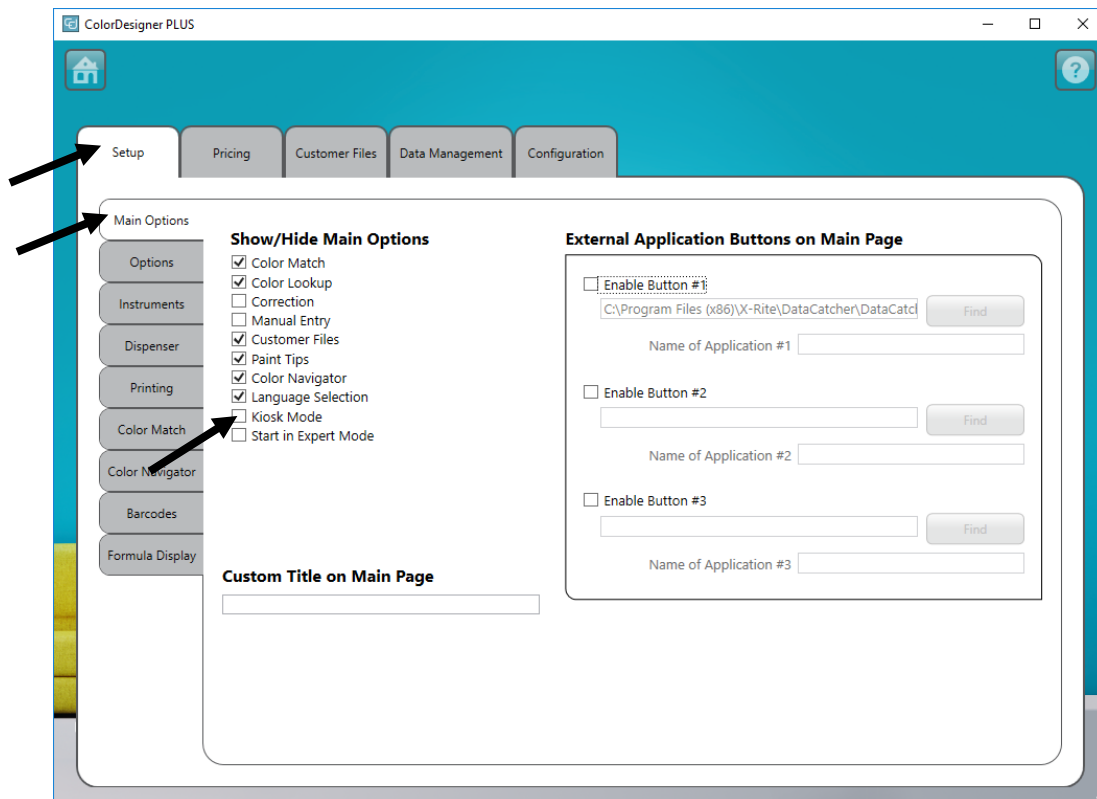
## Accessing the Desktop

By default your ColorDesigner PLUS application runs in a full screen mode. If you would like to use your computer for something other than color matching, follow the procedure below.

1. On the Main Menu screen, select the  icon in the lower left corner to bring up the Configuration menu and then click **Settings**.
2. Enter your password then click **Unlock**. The default password is **1234**.



3. Select **Setup** tab at the top and then select **Main Options**.




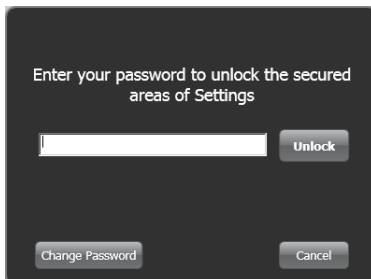
4. Unselect the **Kiosk Mode** option. Your application will automatically change to a window mode.

## E. Importing Customer Files (optional)

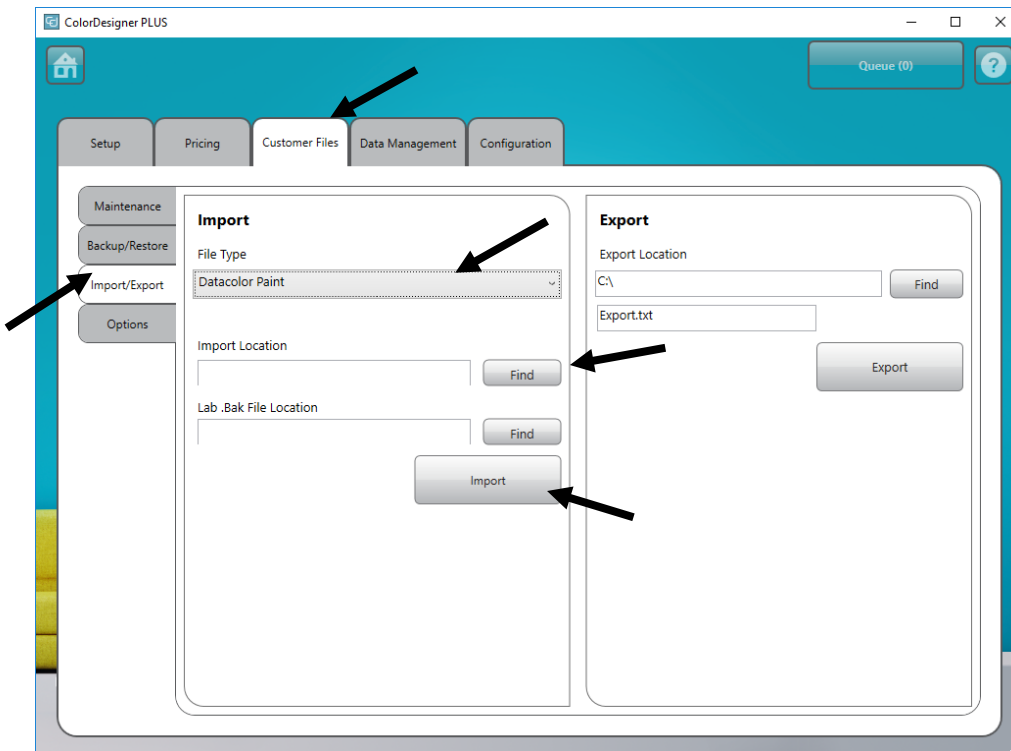
This feature allows you to import customer files from other color matching systems. Customer files from ColorDesigner PLUS/ColorDesigner, Datacolor Paint, and ColoRx can be imported.

X-Rite recommends that backed up files are stored on a USB flash drive device to allow for faster customer file imports.

1. Start ColorDesigner PLUS if it is not already running.
2. Insert your flash drive in a USB port that contains the backed up customer files.
3. On the Main Menu screen, select the  icon in the lower left corner to bring up the Configuration menu and then click **Settings**.
4. Enter your password then click **Unlock**. The default password is **1234**.



5. Select **Customer Files** tab at the top and then select **Import/Export**.



6. Click the **File Type** drop down arrow and select **ColorDesigner PLUS/ColorDesigner**, **Datacolor Paint** or **ColoRx**.


7. Enter the file path in the field or click **Find** and browse to the drive/file location.
8. Click **Import**.

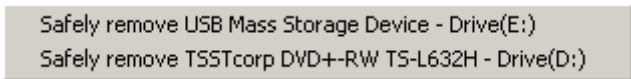
While your customer files are being imported you will see a progress meter on the screen showing the status of the files being extracted.

After your customer files are imported, a message box appears informing you on how many customers and formulas were imported. Click **OK**.

9. To import more files, repeat the steps.
10. Finish by clicking the **Home** button.

**To safely remove USB flash drive from your system, please follow these steps**


1. If in Kiosk, exit ColorDesigner PLUS by pressing keys "**ALT + F4**" on the keyboard. Enter the password if needed.
2. Move the cursor to the right-lower corner and click the green arrow  icon.
3. Click on the device that you wish to remove.

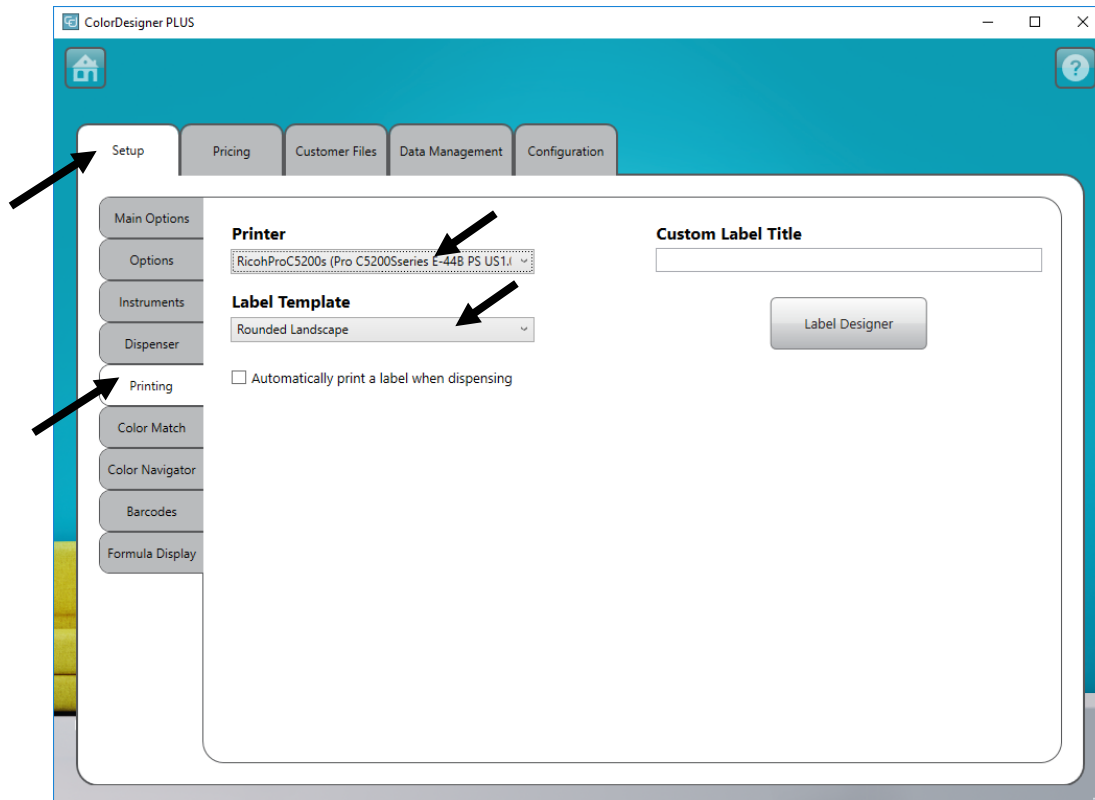


4. A message appears letting you know that it is safe to remove the hardware. Removed the flash drive from the PC and stored in a safe place.



## F. Selecting Printer and Label Template

1. Start ColorDesigner PLUS if it is not already running.
2. On the Main Menu screen, select the  icon in the lower left corner to bring up the Configuration menu and then click **Settings**.
3. Enter your password then click **Unlock**. The default password is **1234**.
4. Select **Setup** tab at the top and then select **Printing**.
5. Click the **Printer** drop down arrow and select the printer to use.
6. Click the **Label Template** drop down arrow to select the label template to use.
7. Add a custom label title that will appear on the rounded and wide labels.
8. Select the **Automatically print...** option to have a label print when dispensing.
9. Click the **Label Designer** button to create custom label templates.



10. Finish by clicking the **Home** button.



## G. Installing Your Instrument

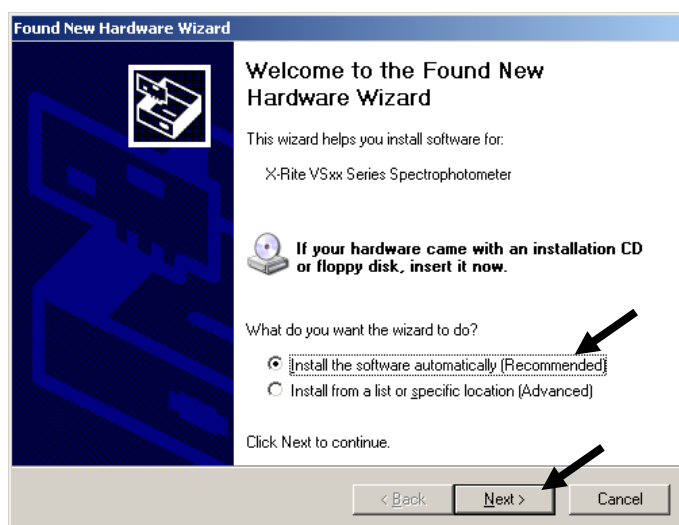
1. Exit the ColorDesigner PLUS application if running.


---

**NOTE:** To exit the application in non-kiosk mode, press Alt-F4 on your keyboard. Enter the password into the field and click **Unlock**. ColorDesigner PLUS will exit.

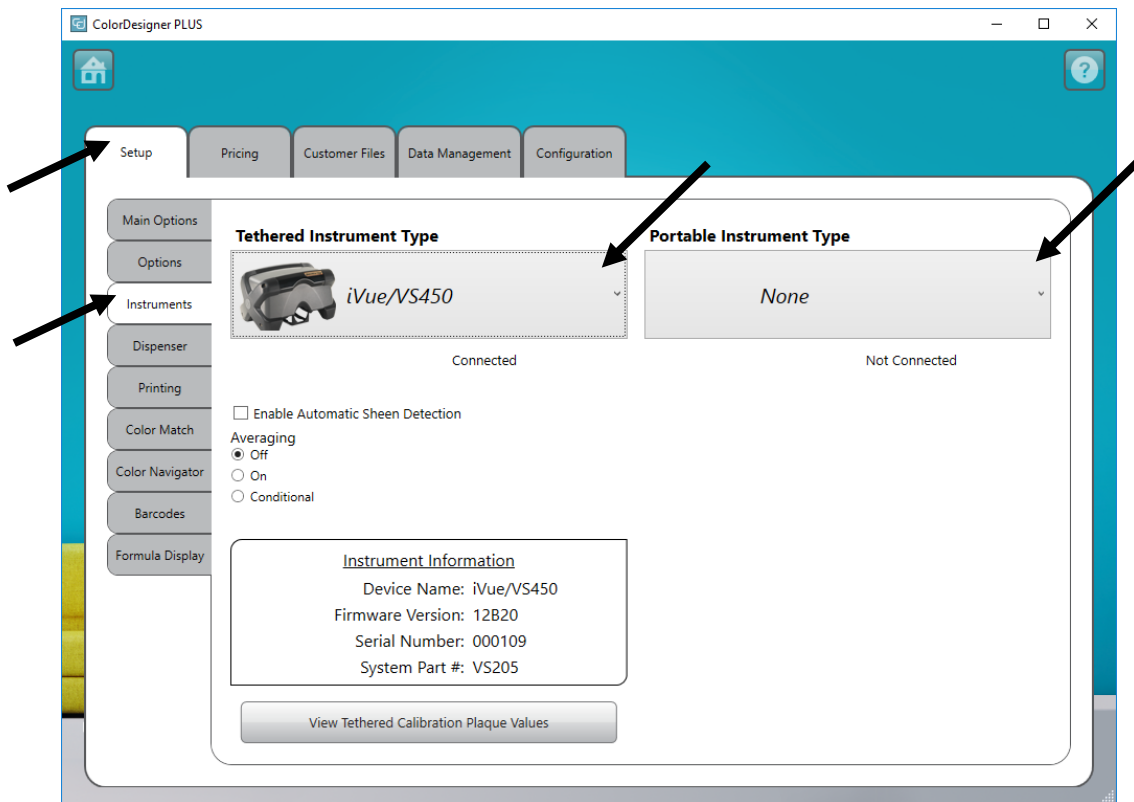
---

2. Plug in power to your instrument and turn on if necessary. Refer to the Instrument Operation Manual for additional information.
3. *For USB port instruments:*  
Attach the USB cable to the port on your instrument and the other end to an available USB port on your computer.  
  
*For Serial COM port instruments:*  
Attach the serial cable to the I/O port on the back of your computer and the other end to the serial port on the instrument. Advance to Step 8 in this procedure.
4. The Welcome to the Found New Hardware Wizard screen appears. Insert your ColorDesigner PLUS flash drive into your USB port.
5. Ensure option **Install the software automatically** is selected and click **Next**.



6. A window may appear informing you that the device has not passed Windows Logo Testing. If so, click **Continue Anyway**.
7. Click **Finish** and remove the ColorDesigner PLUS flash drive from the USB port.
8. Start ColorDesigner PLUS.
9. On the Main Menu screen, select the  icon in the lower left corner to bring up the Configuration menu and then click **Settings**.
10. Enter your password then click **Unlock**. The default password is **1234**.
11. Select **Setup** tab at the top and then select **Instruments**.

12. Click the **Tethered Instrument Type** or **Portable Instrument Type** down arrow to select your instrument.



13. The software will attempt to establish a connection with the instrument. This may take several moments. Once connected, "Not Connected" changes to "Connected" next to the instrument selected.
14. Click **Home** on the main screen to exit.

## H. Installing the Dymo USB Label Printer

1. Exit the ColorDesigner PLUS application if running.

---

**NOTE:** To exit the application in non-kiosk mode, press Alt-F4 on your keyboard. Enter the password into the field and click **Unlock**. ColorDesigner PLUS will exit.

---

**IMPORTANT:** Do not connect the Dymo USB label printer to your computer until instructed to do so during the printer software installation.

2. Insert the LabelWriter CD into your optical drive. The installation screen should appear. If the installation screen does not appear, browse to the CD and double-click the **install.exe** file.
3. Select the language to install.
4. Click **Install**.
5. Select the **Accept License** option and click **Next**.
6. Click **Next** on the Welcome screen.
7. Click **Next** on the Destination Directory screen.
8. Click **Next** on the Ready to Install screen.
9. Select **USB Port** option and click **Next**.
10. Plug in the power cord and turn on your Dymo Label printer.
11. Plug your USB cable into the USB port on the bottom of your printer.
12. Plug the other end of the USB cable into your computer.
13. After a few moments the Installation Complete screen appears. Click **Finish**.
14. Remove the CD from the optical drive and store in a safe place.

Your **Dymo** printer should now be ready to print labels.

## I. Configuring Auto Dispenser

The setup will vary depending on the type of dispenser you have. ColorDesigner PLUS supports a variety of dispenser with varying configurations. The three configurations supported are Remote, Integrated and Direct. They are explained below.

**Remote** - ColorDesigner PLUS communicates with the dispenser software on a separate computer. This communication typically occurs through an RS-232 port.

**Note:** For the "X-Rite" dispenser brand selection, ColorDesigner PLUS communicates using an IP Address.



**Integrated** - ColorDesigner PLUS communicates with the dispenser software on the same computer. This communication typically occurs by writing a formula file to the computer disk.



**Direct** - ColorDesigner PLUS communicates directly with the dispenser. A dispenser driver is typically supplied by the dispenser company. No user configuration is required with the connection protocol.

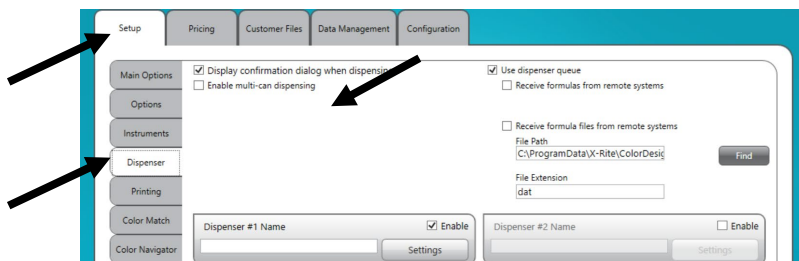


1. If it is not already running, start ColorDesigner PLUS.

2. On the Main Menu screen, select the  icon in the lower left corner to bring up the Configuration menu and then click **Settings**.

3. Enter your password then click **Unlock**. The default password is **1234**.

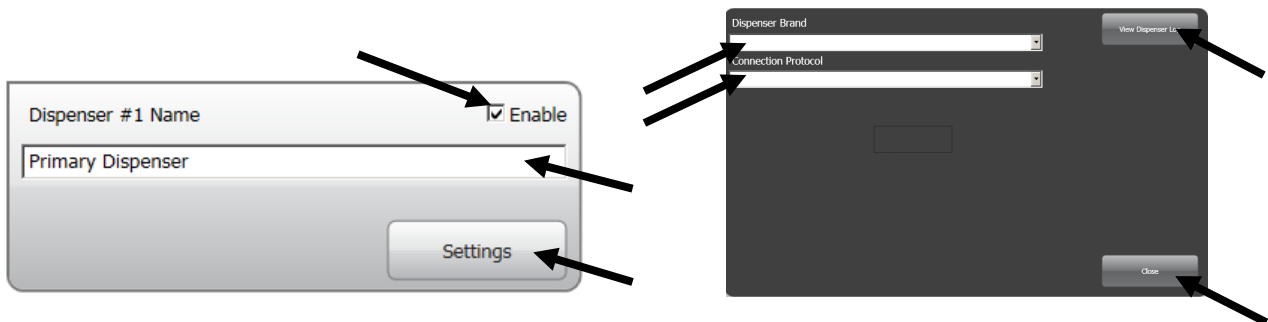
4. Select **Setup** tab at the top and then select **Dispenser**.



5. Check the **Display confirmation dialog when dispensing** box to receive a confirmation message before tinting occurs.

**Note:** For more detailed instructions on setting up dispenser hardware and software, please contact the dispenser manufacturer.

6. Check **Enable multi-can dispensing** to dispense paint over multiple cans.
7. Check **Use dispense queue** to enable the Dispenser Queue feature where painted formulas can be stored and dispensed at a later time.
8. Check the **Enable** box of the dispenser you want to configure.
9. Click in the **Dispenser # Name** field and enter a name for the dispenser. This is the name you will select during a color match for auto tinting.
10. Click the **Settings** button to enter the configuration mode.



### 11. Configure dispenser

For Remote dispensers:

- Select dispenser type from the **Dispenser Brand** list.
- Select **Remote** or a remote model from the **Connection Protocol** list. For a Fluid Management dispenser, **Harbil-A** is strongly recommended.

**Note:** For an "X-Rite" dispenser brand selection, enter the Host Name or IP Address.

- Select the computer port that will be used from the **Dispenser Port** list.

For **Integrated** dispensers:

- Select dispenser type from the **Dispenser Brand** list.
- Select **Integrated** or a integrated model from the **Connection Protocol** list.
- Enter the formula **File Path** and **File Name** in the appropriate fields if applicable.

For **Direct** dispensers:

- Select dispenser type from the **Dispenser Brand** list.
- Select **Direct** from the **Connection Protocol** list.
- Setup the various dispenser parameters as appropriate.

12. Click the **View Dispenser Log** button to see an existing log of dispenser activities.
13. Click **Close** when finished.
14. Configure up to seven additional dispensers if required.
15. When finished, click **Home** to exit.

## J. Set Up for a Barcode Scanner

The “Require base scan when tinting” option allows you to require that the barcode on a can of base paint be scanned before tinting. The “Enable color card scanning” option allows color matching to formula books by scanning the barcode on a color card.

The barcode scanner used must be able to transmit a question mark (?) before and after a barcode is scanned in order for it to be recognized by ColorDesigner PLUS. Example: ?23EFR456?

Refer to the documentation that accompanied your scanner for installation and information on setting it up for the question mark option.

1. If it is not already running, start ColorDesigner PLUS.

2. On the Main Menu screen, select the  icon in the lower left corner to bring up the Configuration menu and then click **Setting**.

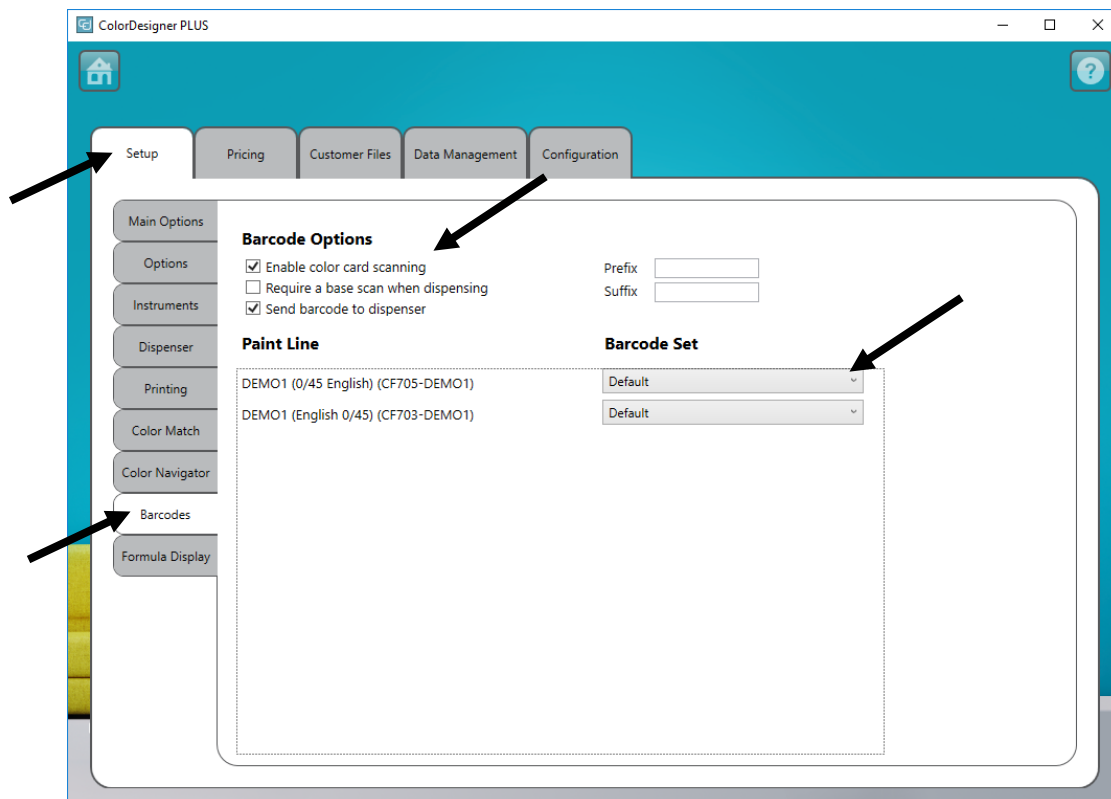
3. Enter your password then click **Unlock**. The default password is **1234**.

4. Select **Setup** tab at the top and then select **Barcodes**.

5. Check **Enable color card scanning**, **Require a base scan when dispensing**, and/or **Send barcode to dispenser**.

6. If required, enter **Prefix** and/or **Suffix** characters in the fields that ColorDesigner PLUS expects to receive in front of or after the base barcode.


7. If required, select the barcode option from the **Barcode Set** drop-down menu.

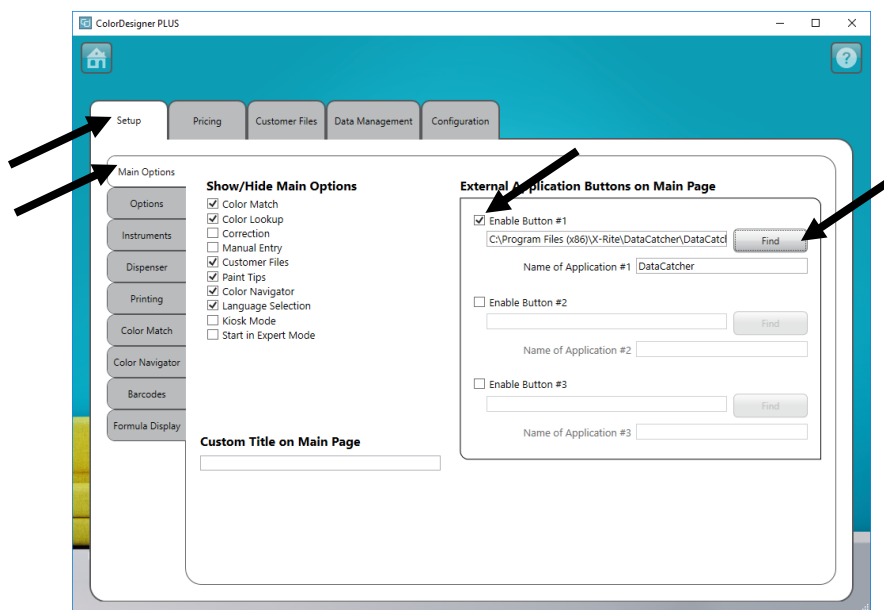


8. When finished, click **Home** to exit.

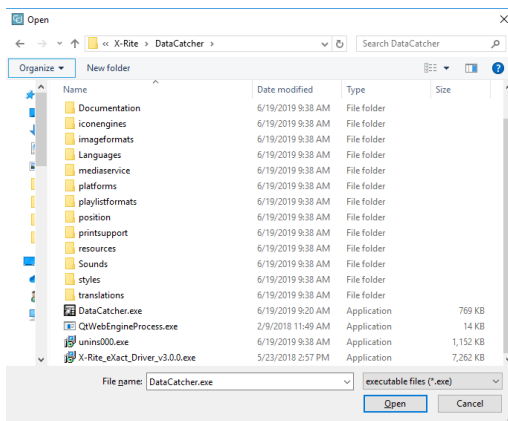
## K. Set Up External Application Buttons

This feature allows you to add up to three additional application buttons to the main screen of ColorDesigner PLUS. The buttons are useful for running other applications (Excel, etc.) while ColorDesigner PLUS is still open.

1. If it is not already running, start ColorDesigner PLUS.
2. On the Main Menu screen, select the  icon in the lower left corner to bring up the Configuration menu and then click **Setting**.
3. Enter your password then click **Unlock**. The default password is **1234**.
4. Select **Setup** tab at the top and then select **Main Options**.
5. Check one of the **Enable External Button #** options.



6. Click **Find** and browse to the location where the application **.exe** file is located.
7. Click **Open** to return to the Setup screen.



8. Enter the name in the **Custom App** field that you want to appear on the button.
9. When finished, click **Home** to exit. The button appears at the bottom of the screen.



**Corporate Headquarters**

**X-Rite, Incorporated  
4300 44th Street SE  
Grand Rapids, Michigan 49512  
Phone 1 800 248 9748 or 1 616 803 2100  
Fax 1 800 292 4437 or 1 616 803 2705**

**European Headquarters**

**X-Rite Europe GmbH  
Althardstrasse 70  
8105 Regensdorf  
Switzerland  
Phone (+41) 44 842 24 00  
Fax (+41) 44 842 22 22**

**Asia Pacific Headquarters**

**X-Rite Asia Pacific Limited  
Suite 2801, 28th Floor, AXA Tower  
Landmark East, 100 How Ming Street  
Kwun Tong, Kowloon, Hong Kong  
Phone (852) 2568 6283  
Fax (852) 2885 8610**

Please visit [www.xrite.com](http://www.xrite.com) for a local office near you.