



**EZcolor**  
**eye-one**  
display 2  
BUNDLE



Color Control for the Creative Community

## Does your print match your screen?

Your monitor and printer reproduce colors differently. In fact, all your devices – scanners, digital cameras, monitors and printers see, display and print color in different ways. Even ink and paper variations will affect the final color!

Enter color management technology, which allows you to optimize and create color profiles for all your devices, making it possible to match color from input to display to print. The EZcolor/Eye-One Display 2 Bundle is a simple-to-use entry-level color management solution designed with you in mind.

In the bundle, you'll get an Eye-One Display 2, a simple but highly advanced calibration tool for your monitor. It allows you to calibrate luminance, gamma and white point to match standard viewing conditions. You can even measure your room or light box to make sure it's optimal for viewing color on your display and prints. The result: you get to see the actual color in your digital files.

You'll also get the EZcolor scanner-based color management software. This simple profiling system uses your scanner to measure and profile your printer. The result: color matching from screen to print.

## *EZcolor is as simple as 1, 2, 3*

### **1. Calibrate and profile your display**

Profiling your monitor is essential. It provides a baseline and guarantees that you are viewing digital color as accurately as possible. Your Eye-One Display 2 allows you to create an ICC profile—a description of your monitor's range of reproducible color. This profile will be used by your system, as well as popular applications such as those from Adobe®, Quark® and Apple® to show you the right color on screen every time.



### **2. Profile your scanner and printer**

Use the EZcolor software and included IT8 scanner target to create custom profiles for your scanners and printers. For the greatest accuracy, create a profile for each printer and paper type you use.

### **3. Apply profiles in your applications**

Finally, use your graphics application to put your profiles to work. Apply your profiles to images for soft proofing on your computer screen, or use the profile when printing to produce accurate, consistent color printouts. It's that simple!



Take a look at your matched color—preferably in controlled lighting conditions! You'll no longer have to hope for accurate prints. What you see is really what you get. Saving you time and money.

EZcolor with Eye-One Display 2, ideal for photographers, creative directors, publishers, and designers is where reliable and affordable color begins. Profiling your LCD, CRT or laptop display means that you'll finally see colors as they actually are. Establishing defined settings throughout your studio and at your customer's site means that everyone will see your color the same way.

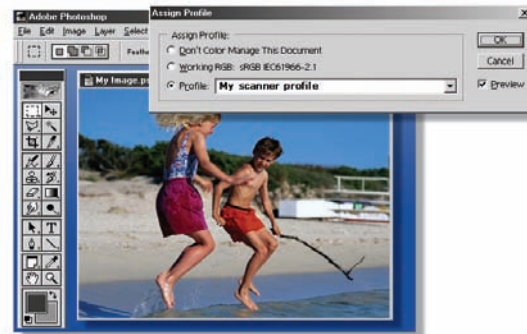


## *Workflow example, step-by-step* Printing from any ICC-compliant application

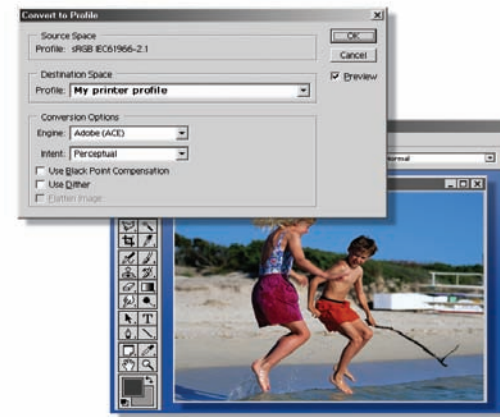
Match your printed image to your original using this simple workflow. You'll need ICC profiles for your scanner and printer. We'll show the process in Adobe® Photoshop®. Other imaging software may be used, however steps may vary slightly.



Open your Image.



Make sure the image opens using an embedded profile, or apply the appropriate input profile: Image > Mode > Assign Profile.



Print the image: File > Print with Preview. Choose Color Management from the drop-down menu and choose the Profile for your printer. Make sure you use the same settings (paper, resolution, etc.) in the printer driver that you used when the profile was created.

## System Requirements

### Windows

- Pentium® PC or better
- Windows XP or better
- Color monitor with 24-bit or greater video card (with LUT support)
- 128MB system RAM, 64MB free disk space
- Dual monitor support requires two (or more) separate video cards that support LUTs.
- Single video cards with dual monitor support are not supported on the Windows platform.

### Macintosh

- Macintosh OS X (10.2 or later)
- Power Macintosh or better
- Color 128 MB system RAM, 64MB free disk space
- Color monitor with 24-bit or greater video card (with LUT support)
- Dual monitor support requires a single video card, or two (or more) separate video cards

## Additional Features

- Output profile editing for even greater control and flexibility
- Profile your scanner for slides or transparencies with an optional transparency target
- ColorWorks utility for applying profiles and soft proofing
- Dual monitor support requires a single video card, or two (or more) separate video cards



INFORMATION PROVIDED IN THIS DOCUMENT IS PROVIDED "AS IS" WITHOUT WARRANTY OF ANY KIND, EITHER EXPRESSED OR IMPLIED WARRANTIES OF MERCHANTABILITY AND/OR FITNESS FOR A PARTICULAR PURPOSE. The user assumes the entire risk as to the accuracy and the use of this information. All text must be copied without modification and all pages must be included. All components of this information must be distributed together. This information may not be distributed for profit. X-Rite® is a registered trademark of X-Rite, Incorporated. Other brand and product names are trademarks of their respective holders. All trademarks may be registered in the United States and/or other countries. Product design and specifications subject to change without notice.

© 2007, X-Rite. All rights reserved.

L11-127

 **x-rite**  
right on color  
xrite.com