

Be sure to follow the instructions in your PantoneLIVE license email to initially claim your PantoneLIVE license and assign it to yourself before continuing. The My X-Rite credentials used in the instructions below must be the credentials that the license was assigned to. If someone else received the license, use their credentials or have them assign (or reassign) them to you.

Enabling PantoneLive in iQC Print 8.9 and above

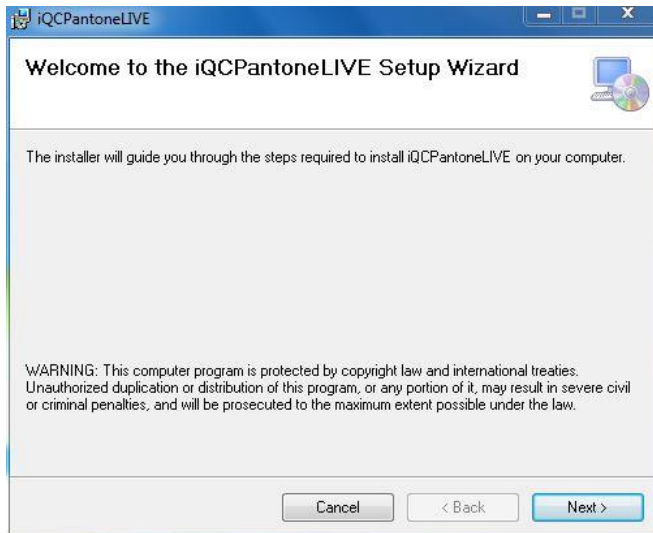
The iQC/iMatch/IFS software application should be installed prior to installation of the PantoneLIVE Plugin.

The PantoneLIVE plugin can be found in the iQC/iMatch application folder here:

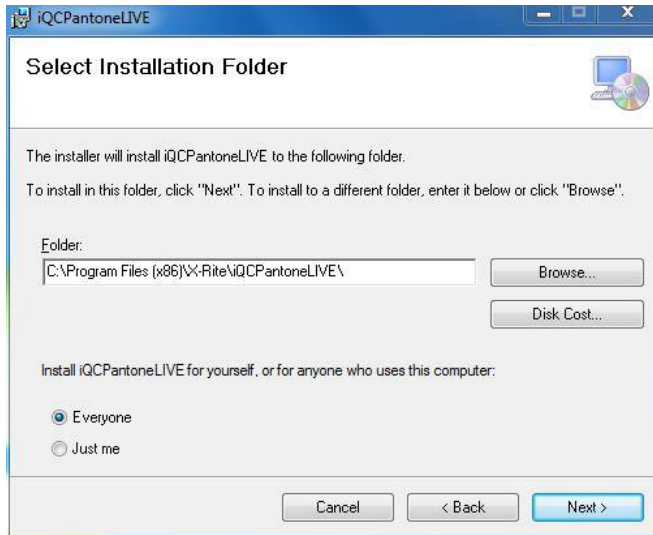
C:\Program Files (x86)\X-Rite\Color_iControl\Support\iQCPantoneLIVESetup.msi

Double click on the file to begin the install.

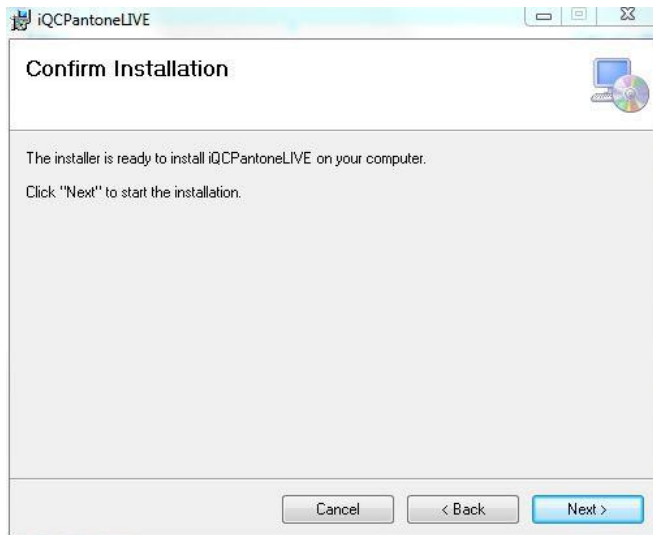
The Welcome Screen will open. Click Next.



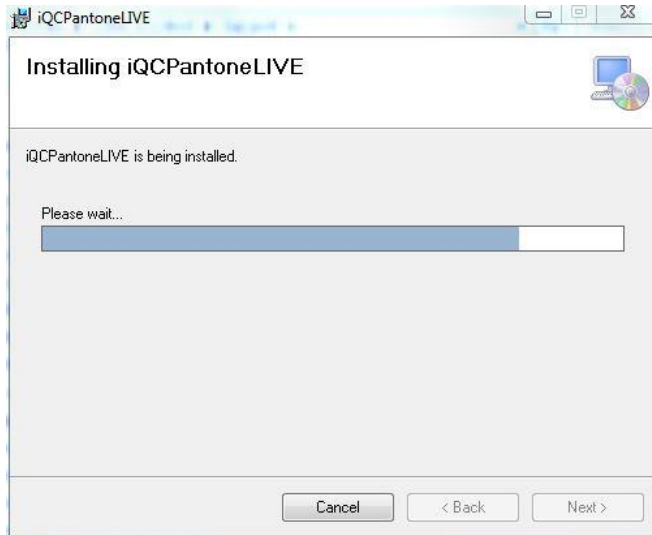
Confirm the install destination (default is recommended). Click Next.



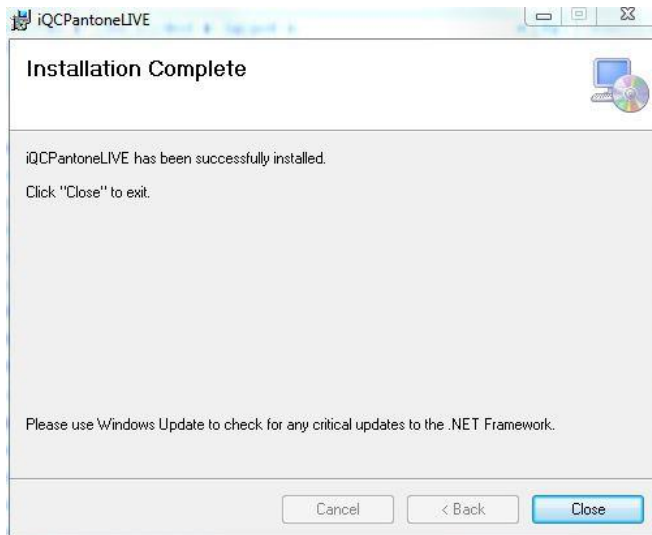
A confirmation screen follows. Click next.



The install will begin.



When the install completes, click Close.



Configuring the PantoneLIVE plugin

Launch iQC/iMatch



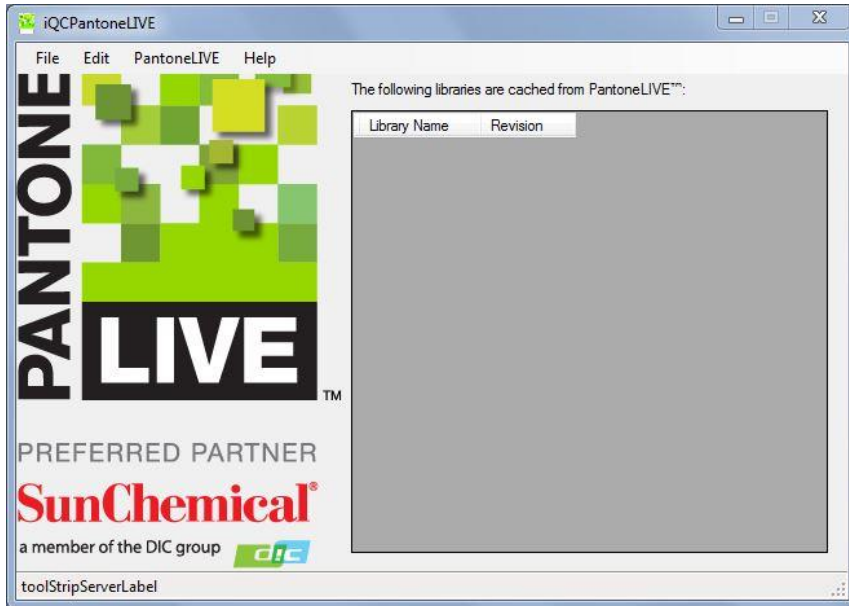
In the Splashscreen, choose 'Open without an eJob'



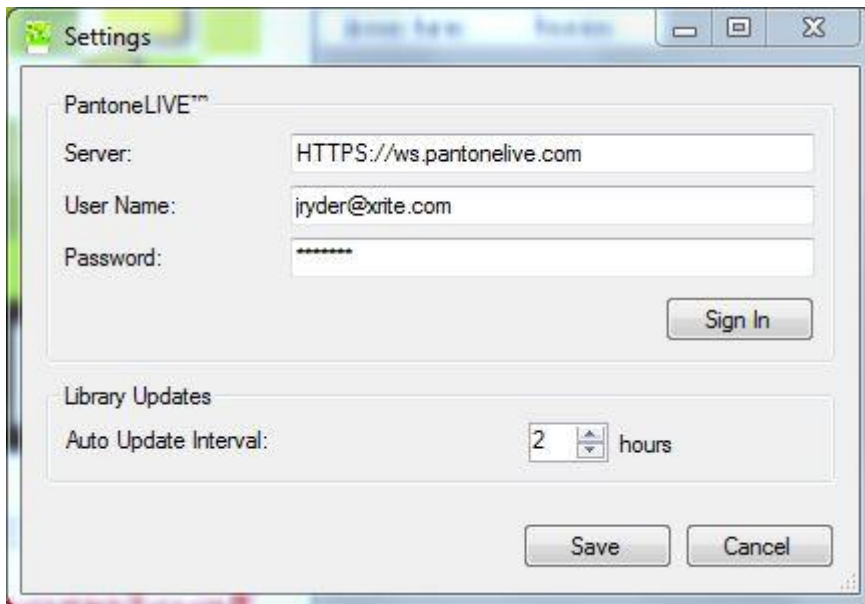
In the iQC/iMatch Toolbar, the PantoneLIVE button will be green.



Click the PantoneLIVE plugin button. The PantoneLIVE plugin window will open.

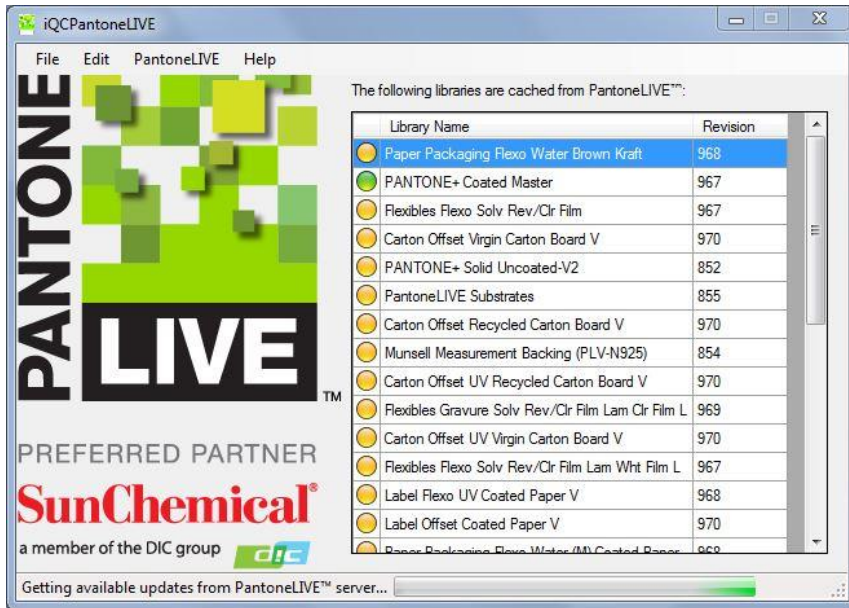


In the iQCPantoneLIVE window, click Edit>Settings. The Settings window will open.

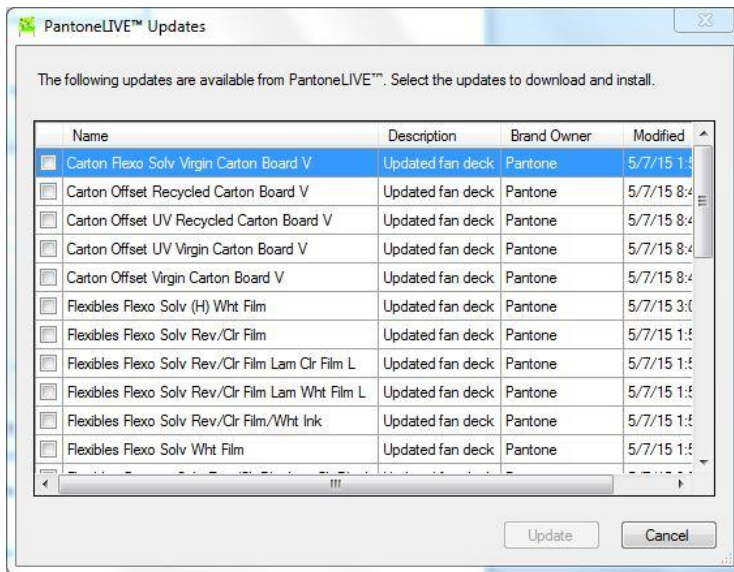


Type in your My X-Rite username and password. This must be the same username and password with which you activated your PantoneLIVE license.

Click 'Sign In'. Your PantoneLIVE will be activated and the palette selection window will be displayed.



The plugin will check for updates and present all available updates when complete.



Select any relevant updates for download and click 'Update'.

Close the PantoneLIVE plugin window.

See your application documentation for additional information on how to use your software.