

The image features two X-Rite color calibration tools. On the left is a Pantone ColorChecker Classic chart, a 2x12 grid of color patches. On the right is a Pantone ColorChecker Munsell Color Services Chart, which includes a grid of color patches and a circular patterned fabric sample. A semi-transparent blue banner is overlaid across the center of the image, containing the title text.

X-RITE PANTORA + MODO

HOW TO UTILIZE VRAY EXPORTER TO EXPORT TEXTURE MAPS FOR MODO

Menu

Browser Editor Viewer TAC7 VLB Help

Properties Representations Textures

Material: X-Rite_Beige_Leather
File: X-Rite_Beige_Leather.axf
Folder: C:\Users\ThomasMeeker\Documents_TAC_VLB_AxF_Samples\AxFsvbrdf_1_0_Dir

Preview Images



Properties

Definitions: X-Rite

Material Identification

Vendor: X-Rite, Incorporated
Catalog: X-Rite Demo Material Library
Material ID: X-Rite_Beige_Leather
Type: SVBRDF, TAC7
Creator:
Creation Date/Time: 10/21/2016 1:46 PM
Created at:
Owner: X-Rite, Incorporated
Part Number:

Measuring Device

Type: TAC7

DRAG MATERIAL FROM MATERIAL TRAY TO ANY OF THE EDITOR PANES

Material Tray



☰ Properties Representations Textures

Open...
New...
Save
Save As...
Reduce to Edited Material (Bake)
Export Edited Material...
Export All Original Textures
Export All Edited Textures
Load Preset...
Save Preset
Save Preset As...
Discard Changes
Close Ctrl+F4

OPEN DROPDOWN MENU AND EITHER EXPORT ORIGINAL OR EDITED TEXTURES

▼ Properties

Definitions: X-Rite

▼ **Material Identification**

| | |
|---------------------|------------------------------|
| Vendor: | X-Rite, Incorporated |
| Catalog: | X-Rite Demo Material Library |
| Material ID: | X-Rite_Beige_Leather |
| Type: | SVBRDF, TAC7 |
| Creator: | |
| Creation Date/Time: | 10/21/2016 1:46 PM |
| Created at: | |
| Owner: | X-Rite, Incorporated |
| Part Number: | |

▼ **Measuring Device**

3D Preview
2D Preview



- Open... Ctrl+O
- New... Ctrl+N
- Save Ctrl+S
- Save As...
- Reduce to Edited Material (Bake)
- Export Edited Material...
- Export All Original Textures ▸
- Export All Edited Textures ▸
- Load Preset...
- Save Preset
- Save Preset As...
- Discard Changes
- Close Ctrl+F4

- leather
- leather.axf
- asMeeker\Documents_TAC_VLB_AxF_Samples\AxFsvbrdf_1_0_Dir
- Native AxF Textures...
- Optimize for VRED PlasticMaterial...
- Optimize for MentalRay mia_material...
- Optimize for VrayMtl...

▼ Properties

Definitions: X-Rite ▾

▼ Material Identification

Vendor: X-Rite, Incorporated
Catalog: X-Rite Demo Material Library
Material ID: X-Rite_Beige_Leather
Type: SVBRDF, TAC7
Creator:
Creation Date/Time: 10/21/2016 1:46 PM
Created at:
Owner: X-Rite, Incorporated
Part Number:

▼ Measuring Device

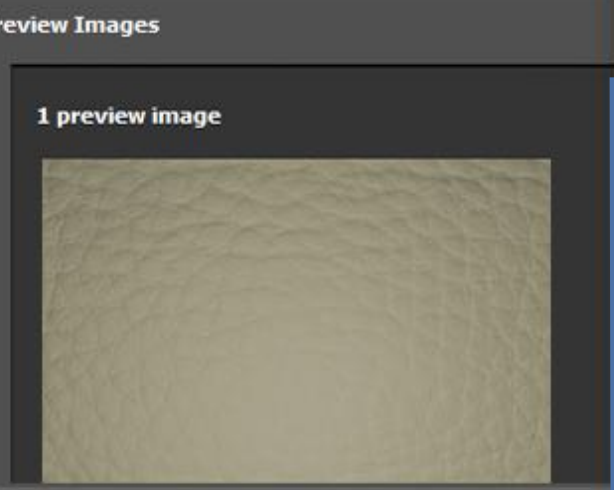
**SCROLL DOWN AND
SELECT OPTIMIZE FOR
VRAYMTL**

▼ Material Tray ☰ ⏪ ⏩ ⏴ 1 item - 1 selected



X-Rite_Beige_Leather

Material: X-Rite_Beige_Leather
File: X-Rite_Beige_Leather.axf
Folder: C:\Users\ThomasMeeker\Docu



Material Tray

1 item - 1

te_Beige_Leather

Optimize export for ChaosGroup VrayMtl - Select target directory

Look in: C:\Users\ThomasMeeker\Document... \AxFSamples\AxFSvbrdf_1_0_Dir

| Name | Size | Type | Date Modified |
|--------------|------|------|---------------|
| My Computer | | | |
| ThomasMeeker | | | |

Directory: [] Choose Cancel

Files of type: Directories

Image Format: 8 bpc: Portable Network Graphics (*.png)
8 bpc: Portable Network Graphics (*.png)
HDR: ILM OpenEXR (*.exr)
8 bpc: Tagged Image File Format (*.tif *.tiff)
HDR: Tagged Image File Format (*.tif *.tiff)

CHOOSE IMAGE FORMAT
EXR RECOMMENDED

FOR DIELECTRICS

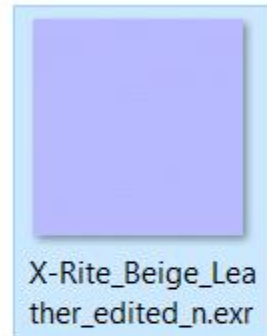
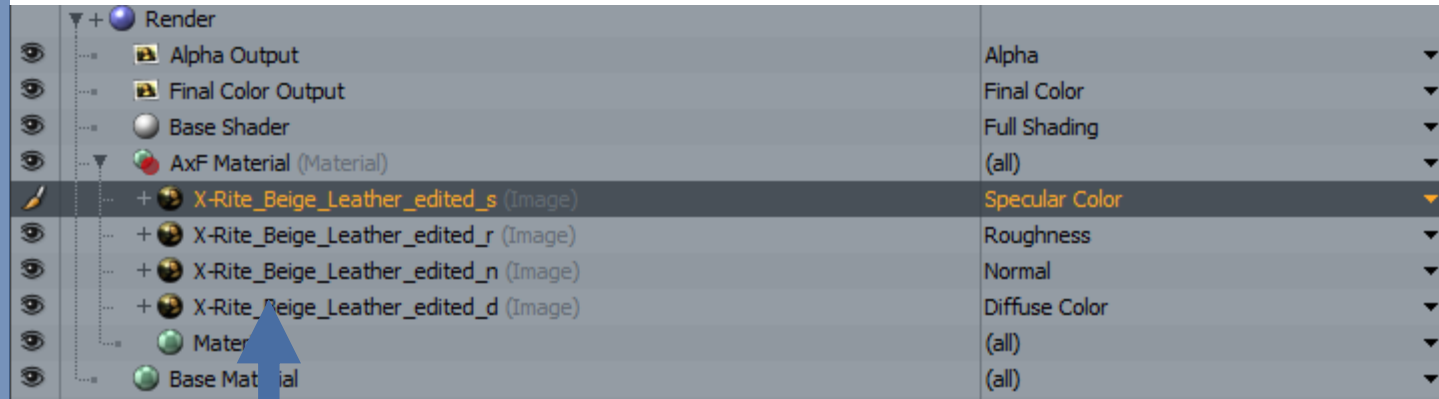
DRAG THE EXPORTED TEXTURE MAPS INTO THE MATERIAL EDITOR AND ASSIGN THE TEXTURE CHANNELS ACCORDINGLY.

D – DIFFUSE

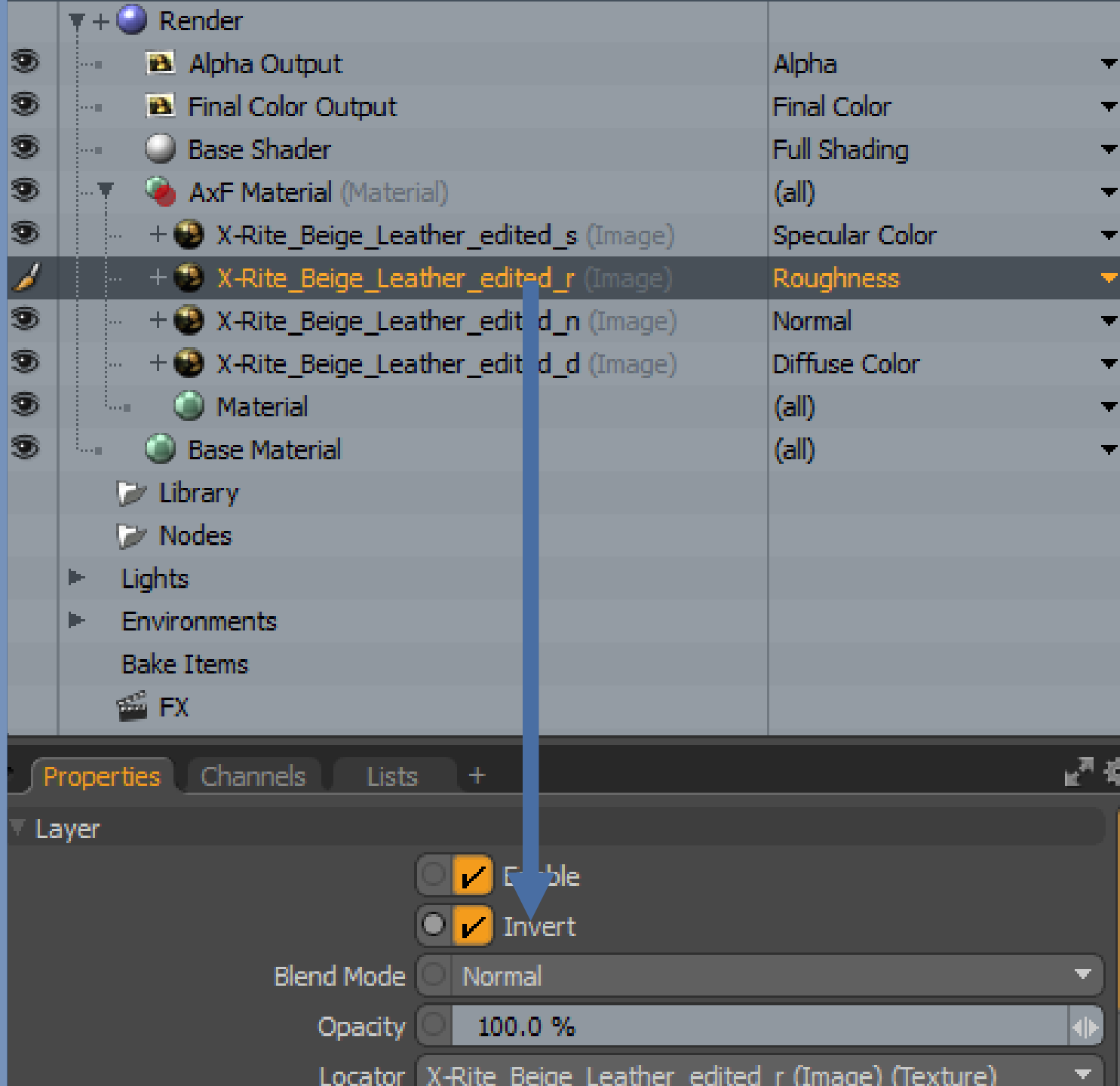
N – NORMAL

R – ROUGHNESS

S – SPECULAR COLOR



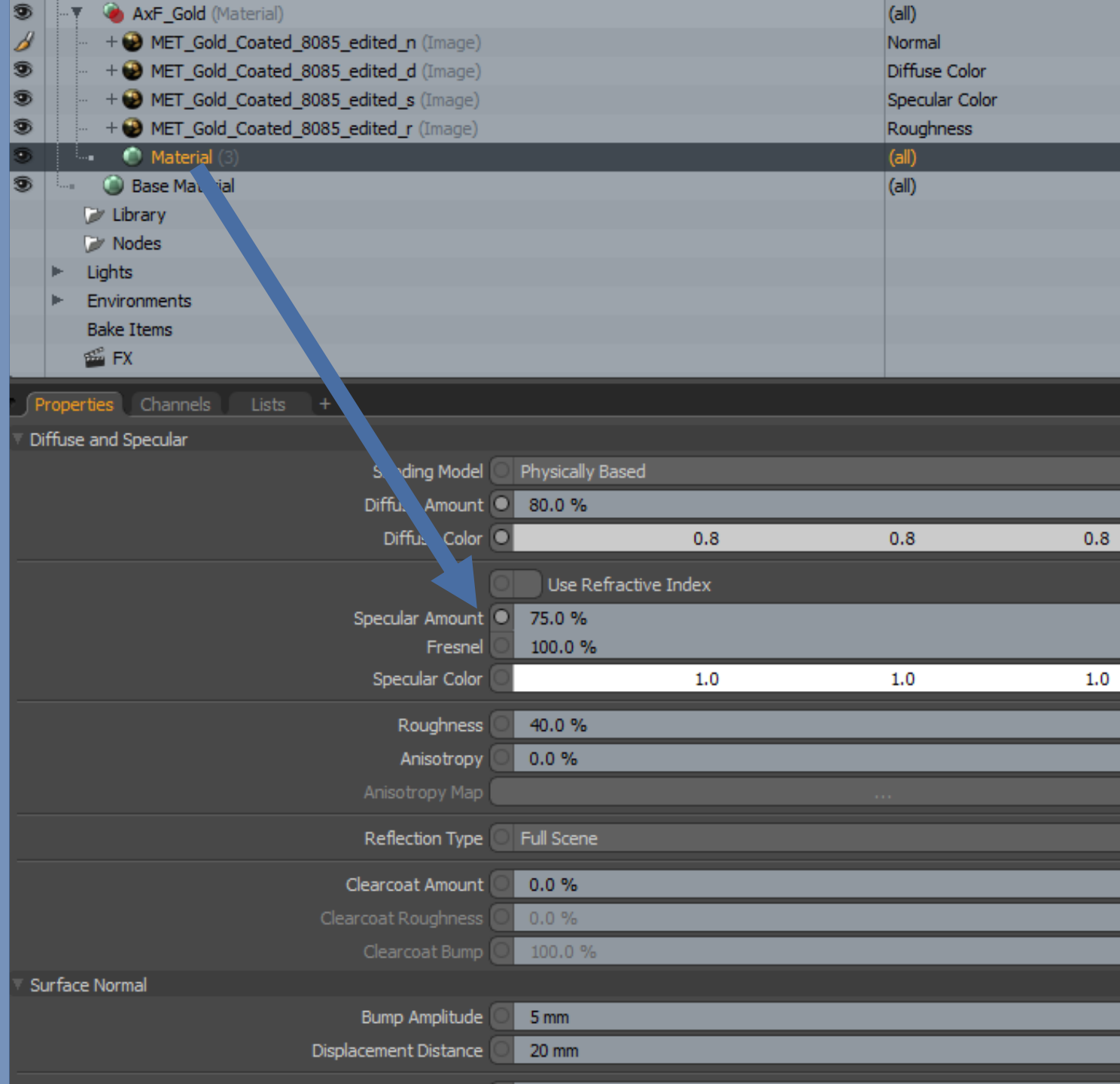
INVERT THE ROUGHNESS MAP.



FOR METALS

**FOLLOW THE SAME STEPS AS
DIELECTRICS.**

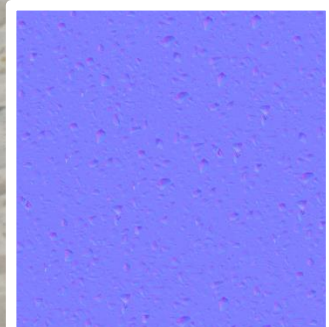
**THE SPECULAR AMOUNT
SHOULD BE MANUALLY
TWEAKED. TYPICAL SPECULAR
AMOUNT VALUES FOR METAL
ARE 60% TO 95%. FRESNEL IS
ALWAYS 100%**



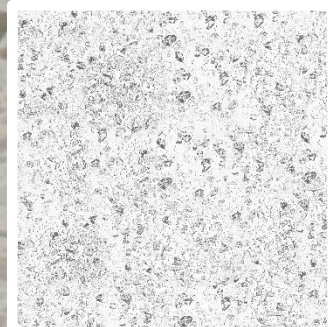
SAMPLE MAPS CREATED AND STORED



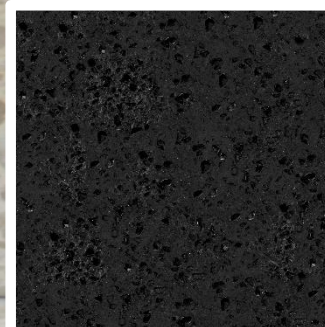
DIFFUSE ALBEDO MAP



NORMAL MAP



ROUGHNESS MAP



SPECULAR MAP

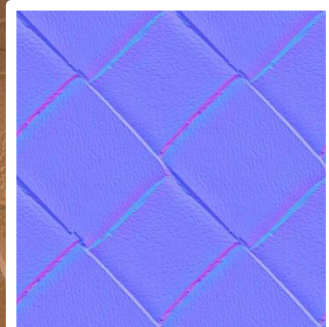


STONE & GRANITE

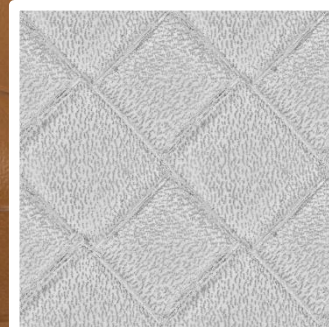
SAMPLE MAPS CREATED AND STORED



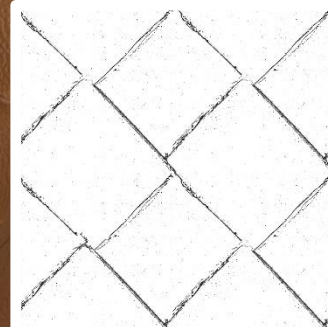
DIFFUSE ALBEDO MAP



NORMAL MAP



ROUGHNESS MAP



SPECULAR MAP

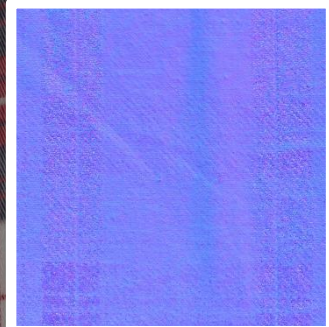


LEATHERS & FAUX LEATHERS

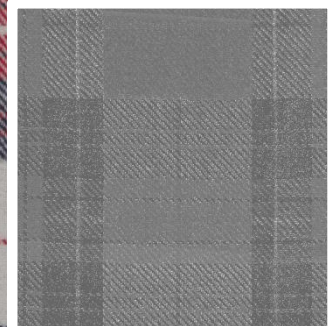
SAMPLE MAPS CREATED AND STORED



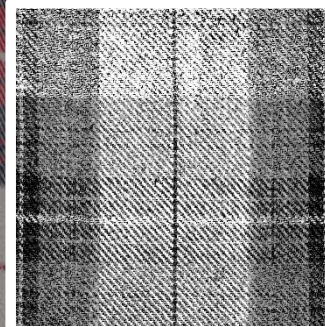
DIFFUSE ALBEDO MAP



NORMAL MAP



ROUGHNESS MAP

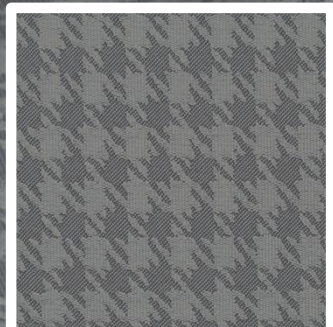


SPECULAR MAP

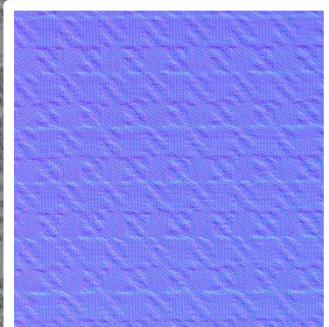


DETAILED FABRICS

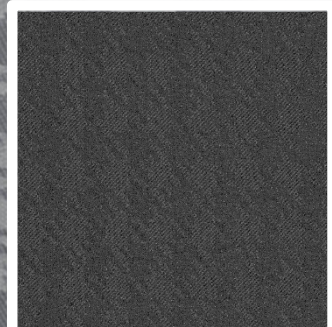
SAMPLE MAPS CREATED AND STORED



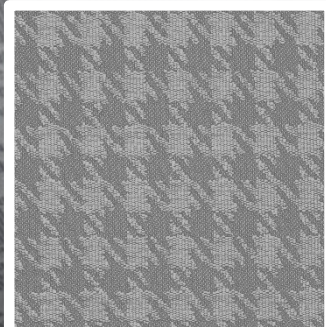
DIFFUSE ALBEDO MAP



NORMAL MAP



ROUGHNESS MAP



SPECULAR MAP



DETAILED FABRICS