

ColorCert InkFormulation Connect

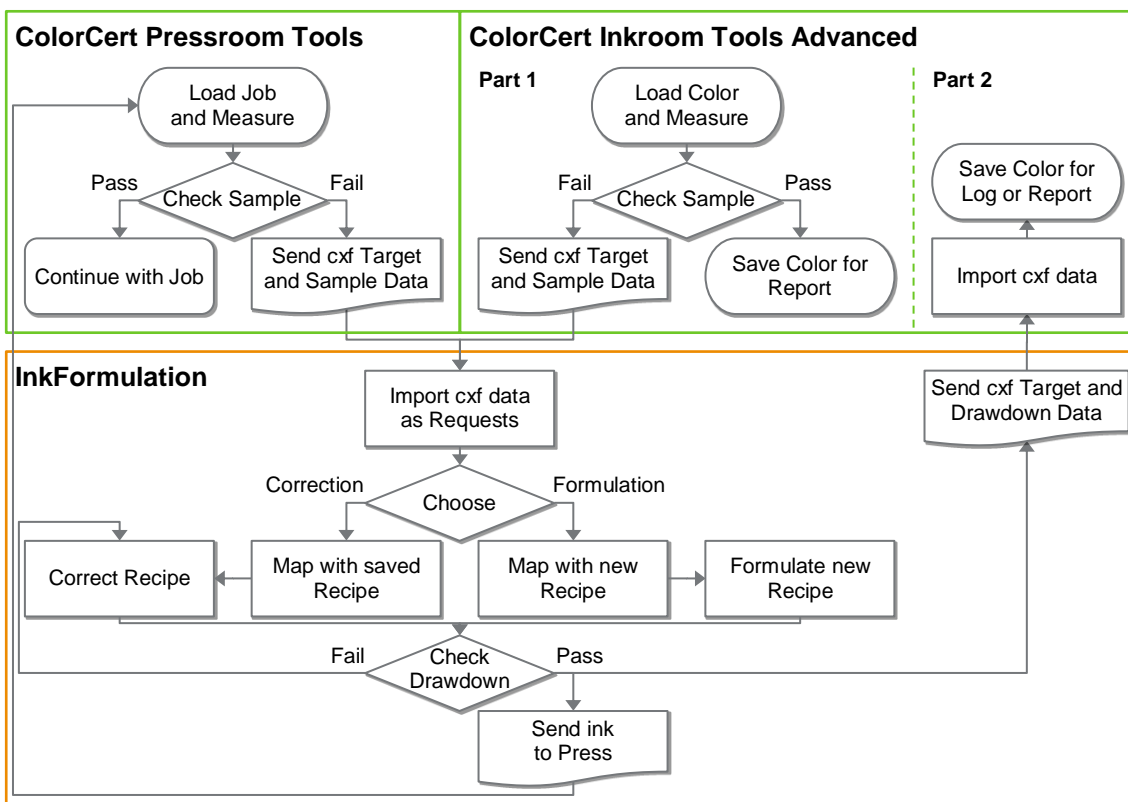
Version History

- March 31st 2017 - Version 1.0

Scope

This document describes the initial setup and functionality of the of the two way connection between InkFormulation and ColorCert.

Solution Summary



Pressroom Tools Workflow

Usually a task for the press operator during make ready of the press. Load and Measure a ColorCert job as usual. Colors that are out of tolerance need to be corrected in InkFormulation, click right and send the measurement data as cxf to InkFormulation.

Inkroom Tools Workflow Part 1

Usually a task for the ink technician prior to sending an ink to the press. Load and Measure a color as usual. Colors that are out of tolerance need to be corrected in InkFormulation, click right and send the measurement data as cxf to InkFormulation.

InkFormulation Workflow

The ColorCert cxf data arrives in InkFormulation as requests in an inbox. You can map saved recipes and correct them based on these measurements or formulate a new recipe. Create and measure drawdowns as usual. When the drawdown has passed, the ink can be send to the press.

Inkroom Tools Workflow Part 2

After the InkFormulation Workflow you can also send the measured drawdown cxf data back from InkFormulation to the ColorCert Inkroom Tools to add it to the log or to save a report.

Requirements

- ColorCert 2.7* (Manager, Pressroom Client, Inkroom Tools Advanced)
- InkFormulation 6.3* (PrinterBasic, PrinterPro, Manufacturer, Online)
- Useful samples and information from the ColorCert support website
<http://www.xrite.com/service-support/product-support/formulation-and-qc-software/colorcert-desktop-tools>
 - Color Basics for Pressroom (Rev. B) (physical sample sheet in the eXact box)
 - ColorCert Color Basics Sample Data
 - ColorCert Startup and Configuration Guide
- Useful information from the InkFormulation support website
<http://www.xrite.com/service-support/product-support/formulation-and-qc-software/inkformulation-software>
 - ColorCert Color Basics Sample Data

* General cxf exchange functionality already exists with InkFormulation 6.0 and ColorCert 2.6 but lacking further improvements.

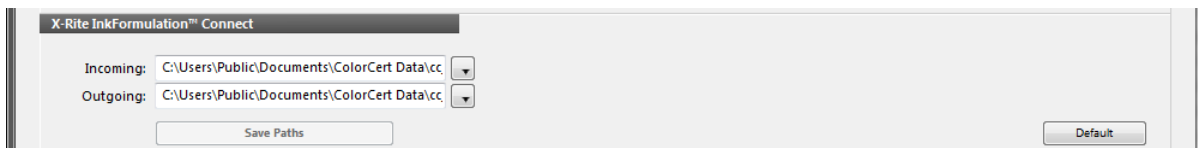
Specific notes for InkFormulation Online

The workflows described below are working in the same way for an InkFormulation Online Client running on the same or different workstation than ColorCert. They have been verified using an RDP session connected to an InkFormulation Online Server running on 2012 R2 and with an eXact device connected to the client using USB. Please follow the specific requirements and limitations to connect the eXact with InkFormulation Online. These can be found on the InkFormulation Support page on our website.

Initial Setup

Setup in ColorCert

1. Start **ColorCert**.
2. Go to **Window -> Preferences**.
3. Select the **Add-Ons** tab.



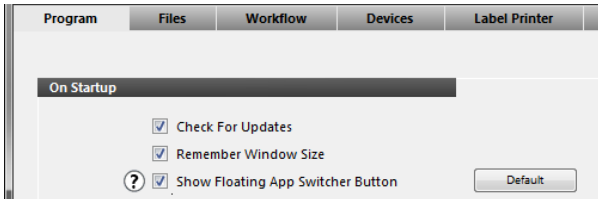
- Browse to append the shared folder location for the cxf files. This can be a local or network path both applications have access to. Default locations in ColorCert:
Incoming = C:\Users\Public\Documents\ColorCert Data\cc_ifsdata_in
Outgoing = C:\Users\Public\Documents\ColorCert Data\cc_ifsdata_out
4. Close the Preferences.

Optional: Setup of the App Switcher Button

When you run InkFormulation and ColorCert on the same workstation and share one eXact in both applications you should activate the App Switcher button. It is always in front of other applications and allows switching back to ColorCert while InkFormulation is in front and it helps to release and reconnect to the eXact.

It is recommended to start ColorCert and establish the connection to the eXact prior to InkFormulation.

1. Select the **Program Tab**.



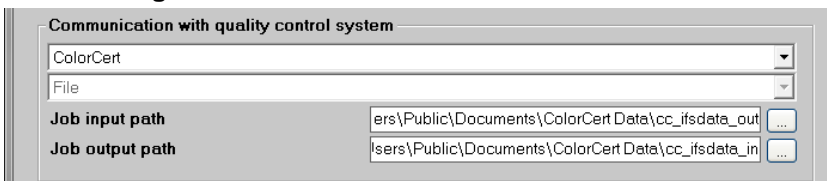
2. Activate **Show Floating App Switcher Button**.
3. Close the ColorCert Preferences.
4. Restart ColorCert to get the App Switcher button enabled.



- It has a blue highlighted connection area where you can release and restore the eXact connection.
- If you click anywhere else inside the button window you will bring ColorCert back in front of other applications, but only if ColorCert has not been minimized before.

Initial Setup in InkFormulation

1. Start **InkFormulation**.
2. Go to **Settings -> Communication**.



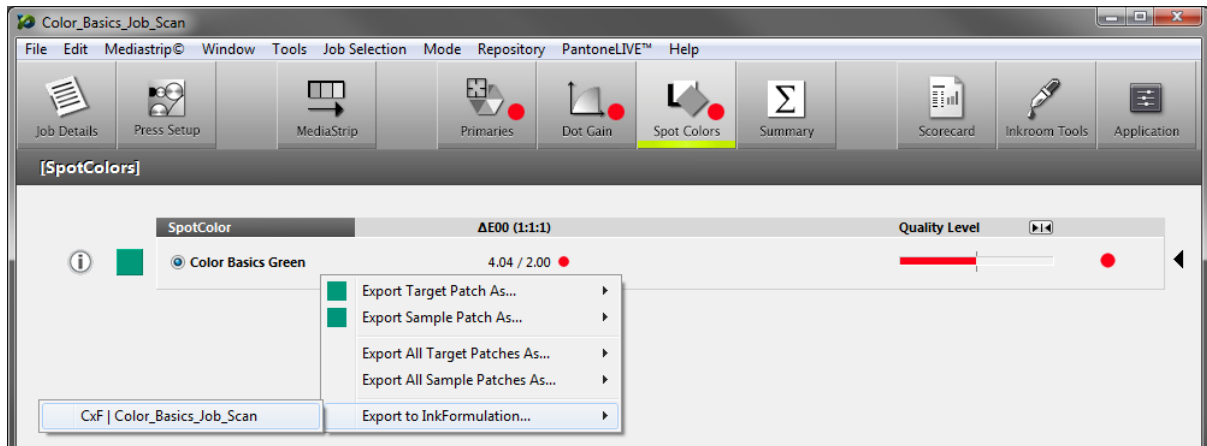
- Under **Communication with quality control system** select **ColorCert** from the drop down list.
 - Browse to append the shared folder location for the cxf files. This can be a local or network path both applications have access to. Default locations in InkFormulation:
Job input path = C:\Users\Public\Documents\ColorCert Data\cc_ifsdata_out
Job output path = C:\Users\Public\Documents\ColorCert Data\cc_ifsdata_in
3. Click **OK** to close the Communication Settings.

Workflow between ColorCert and InkFormulation

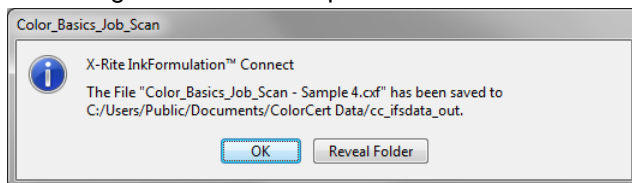
Pressroom Tools Workflow

This is a typical task for the press operator during make ready on press.
(Available in ColorCert Manager and ColorCert Pressroom Client)

1. In the **ColorCert Chooser** go to **Pressroom Tool** and load a job as usual.
2. Measure your printed sample as usual.
3. Select the **Primary** or **Spot Color** tab.
4. Rightclick on any Ink or Spot Color name and select **Export to InkFormulation -> cxf | [job name]**.



5. A message confirms the export of the cxf data.



If there is already another file with the same name in the folder, ColorCert adds #[number] as an appendix to the file name.

Optional: When you click **Reveal Folder** the folder opens for reference.

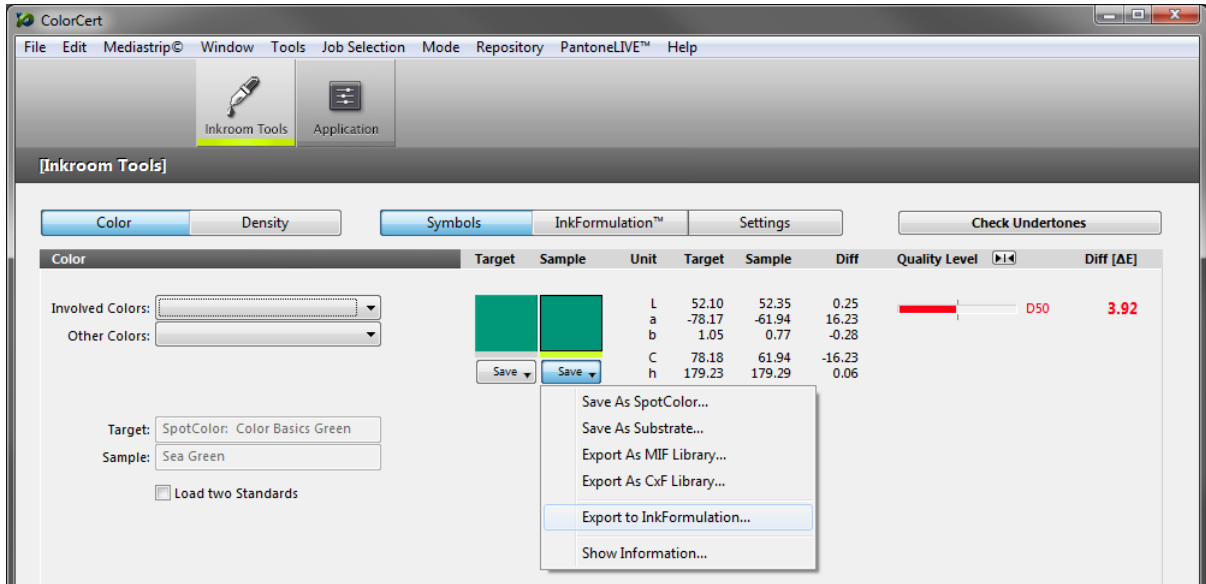
6. Click **OK**

Note: In this workflow the cxf file name is used from the Job name and the Sample number. The cxf contains all Target and Sample measurements for all ink and spot color full tones and the substrate.

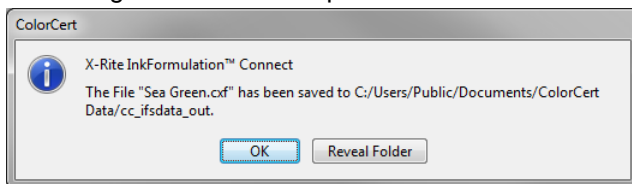
Inkroom Tools Workflow Part 1

This is a typical task for an ink technician checking ink deliveries prior to sending ink to the press. (Available in ColorCert Manager and ColorCert Inkroom Tools Advanced)

1. In the **ColorCert Chooser** go to **Inkroom Tool** and **load a color** as usual.
2. **Measure** your Drawdown or Sample as usual.
3. Under Target or Sample click **Save** and select **Export to InkFormulation**.



4. A message confirms the export of the cxf data.



If there is already another file with the same name in the folder, ColorCert will add #[number] as an appendix to the file name.

Optional: When you click **Reveal Folder** the folder opens for reference.

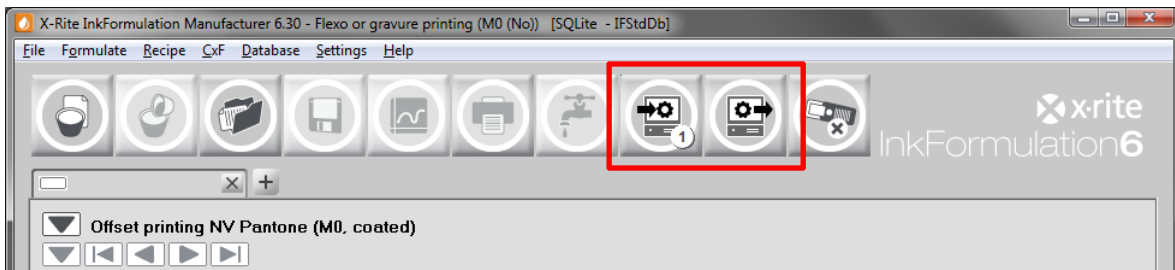
5. Click **OK**

Note: In this workflow the cxf file name from the sample measurement is used. The cxf only contains the target values and the sample measurement but no substrates.

InkFormulation Workflow

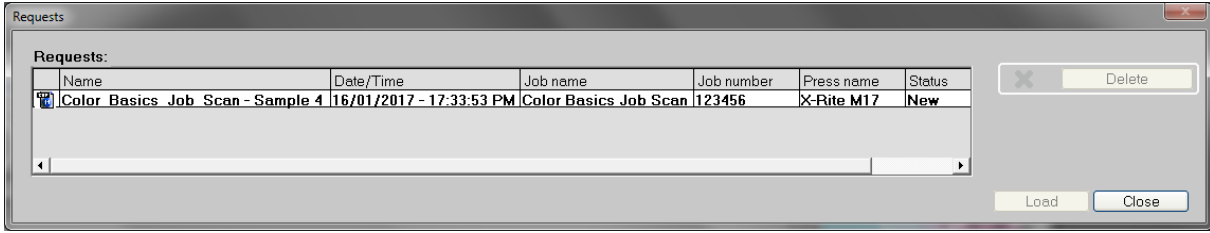
This is a typical task for the ink technician who is correcting existing recipes or creating new recipes.

1. Start **InkFormulation**.



The toolbar has two new buttons for **Requests** and **Send** of measurements/recipes. A number in the Request button shows that there is one new cxf file in the shared folder.

2. Select the relevant **assortment** for the measurements of the ColorCert job.
3. Click the **Request** button.



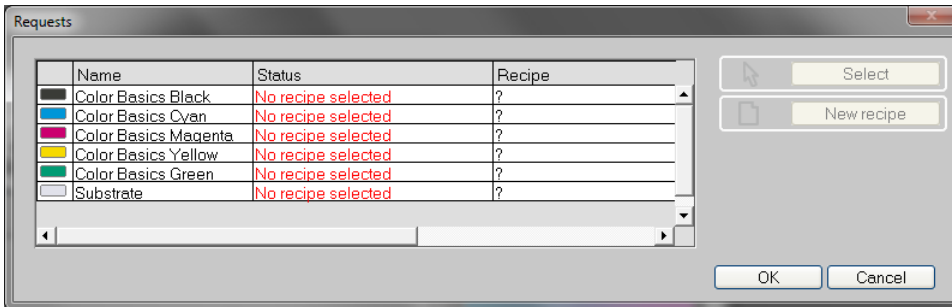
A list of all available cxf files in the shared folder will be shown, containing the following attributes:

- **Name:** file name of the cxf file.
- **Date/Time:** creation date and time of the cxf file.
- **Job name:** job name of the ColorCert job.
- **Job number:** job number of the ColorCert job.
- **Press name:** license name of the ColorCert Dongle used for exporting.
- **Status:** **New** if not used in InkFormulation. New files are shown bold.

Note: As soon as you load the file and do not click **Cancel** in the next step, a small information line will be written in a RequestStatus.ini in the shared folder. The **Request** button will not recognize it as new anymore. You can still access the cxf file from the **Request** button and start the process again. Previously assigned recipes will not be saved.

If you want to keep the shared folder tidy, you can delete any used cxf files from here at the end of the process.

4. Select the appropriate file and click **Load**.
5. All targets of the cxf file are shown in the request list.

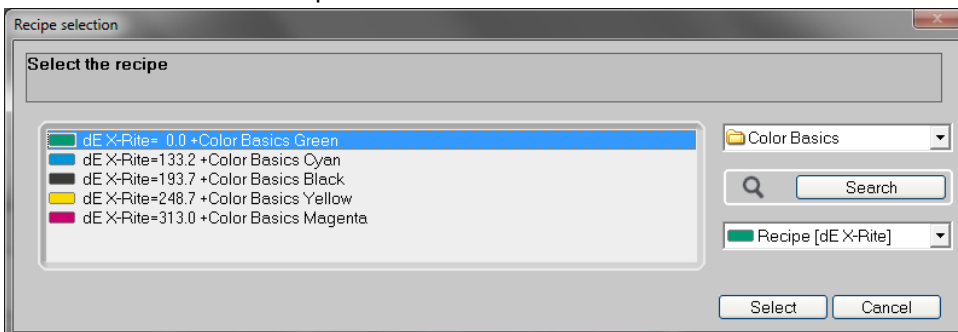


Select the color you want to correct and choose:

- **Select** to correct a saved recipe
- **New recipe** to formulate a new recipe.

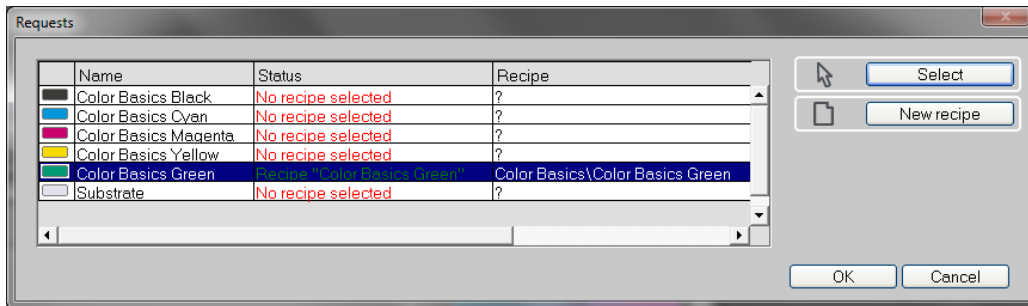
Correcting a saved recipe as part of the request

1. Select a color and click **Select** in the request list, to open the recipe selection window which allows you to search and select a recipe for the relevant color.



2. Use the **search options** on the right to find a relevant recipe.

3. Select the recipe and click **Select**.



In the request list the corresponding color is shown with the selected recipe.

4. Continue with other colors in the request list and then click **OK** to open the corresponding recipes.



- **Target color:** target from the saved recipe.
- **Recipe measured:** sample measurement from ColorCert.
- **Substrate** of last recipe: target substrate from ColorCert.
- Other information is based on the saved recipe.

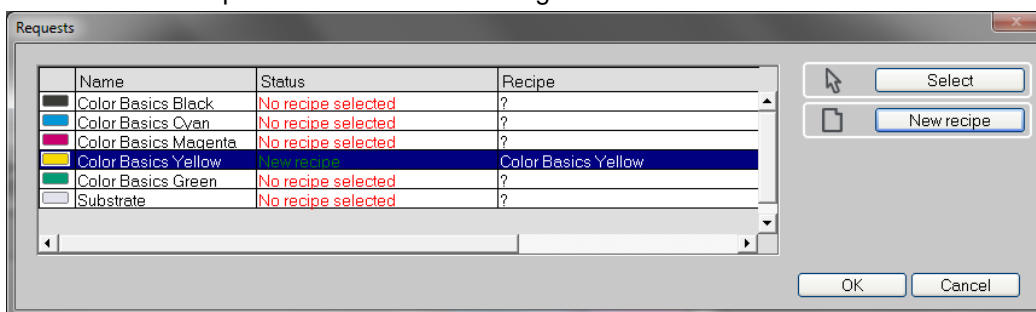
5. Click the **Formulate -> Correction recipe** button.

6. Follow the usual correction workflow including drawdowns and further corrections till the recipe is acceptable.

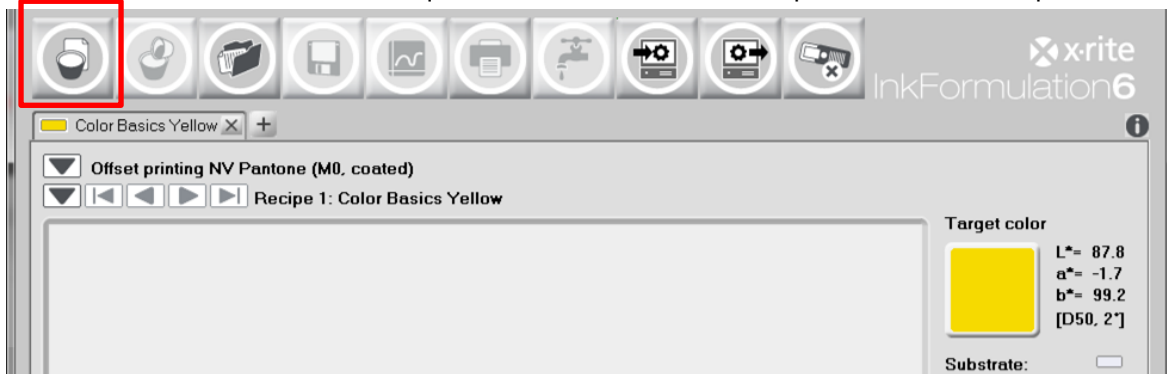
Note: The result is a correction for the initial recipe based on the recipe target using the sample measurement and target substrate from ColorCert.

Formulate a new recipe as part of the request

1. If you click **New recipe** in the request list, the status of the request will change to New recipe and it creates a new recipe name based on the Target name in the default folder.



2. Continue with other colors in the request list and then click **OK** to open the relevant recipes.



- **Target color:** target from the ColorCert job.
- **Substrate** of last recipe: target substrate from ColorCert.

3. Click the **Formulate -> Basic Recipe** button.

4. Follow the usual formulation process including drawdowns and further corrections till the recipe is acceptable.

Note: The result is a recipe based on the target color and target substrate from the ColorCert job.

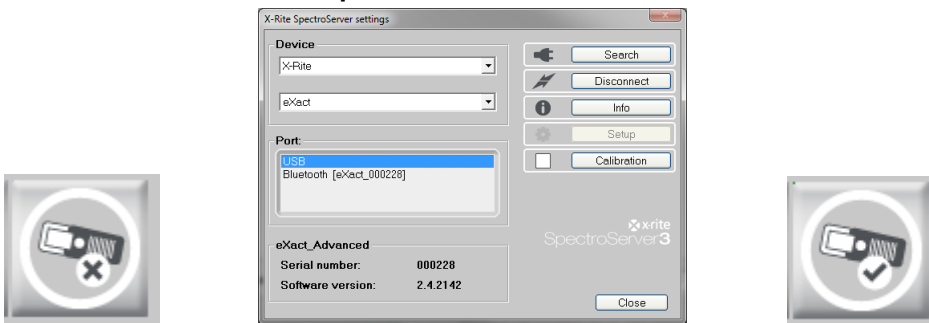
Measure the drawdown in InkFormulation

If ColorCert is still running in the background and the eXact display shows “Tethered to the PC” it still has an established connection to the eXact. To be able to measure in InkFormulation with the same device you have to disconnect the eXact from ColorCert and connect it to the SpectroServer from InkFormulation.

1. On the **App Switcher** button click on the highlighted blue **connection area** to release the eXact.



2. In InkFormulation click the **SpectroServer** button and connect the eXact as usual.



3. Click on **Recipe: calculated** to measure the drawdown of your formulated color.

4. **Save** your recipe as usual.

Note: As long as InkFormulation has an open measurement window and the eXact display shows “Tethered to the PC”, the App Switcher button from ColorCert cannot reclaim the eXact connection. If the measurement window in InkFormulation is closed, the eXact display will show the usual screen.

5. Click on the **connection area** in the **App Switcher** button to reclaim the eXact connection for ColorCert.

Inkroom Tools Workflow Part 2

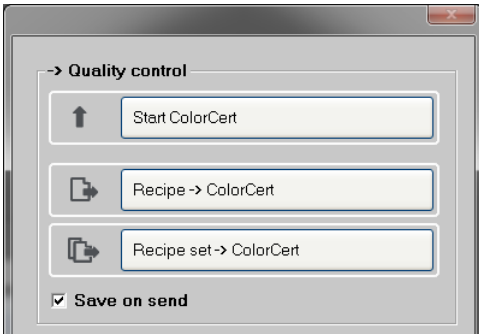
This could be a task for an ink technician recording drawdown results in ColorCert that were already measured in InkFormulation prior to sending the ink to the press.

(Available in ColorCert Manager and ColorCert Inkroom Tools Advanced)

1. In **InkFormulation** open the recipes you want to send to ColorCert.
2. Click the **Send** button.



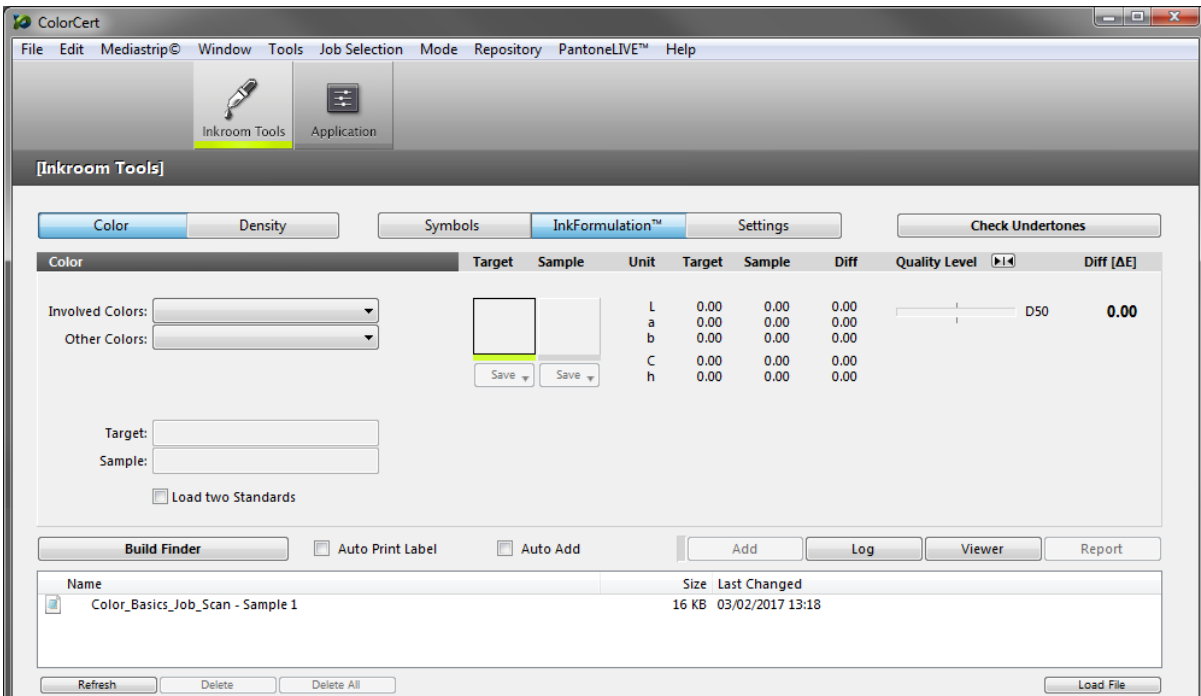
3. Select



- **Recipe -> ColorCert**, if you only want to send the Recipe of the active tab
- **Recipe set -> ColorCert**, if you want to send all open recipes

A cxf file will be created with the recipe targets, substrates and the drawdown measurements.

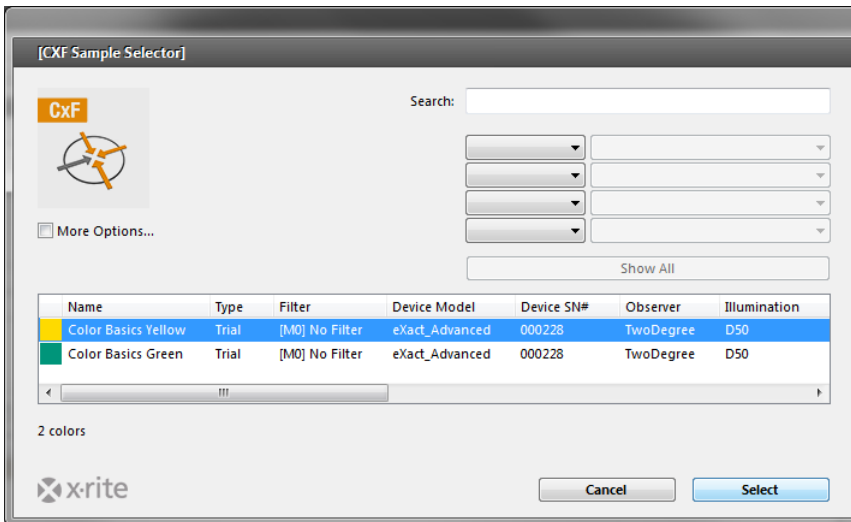
4. In the **ColorCert Chooser** go to **Inkroom Tool**.
5. Click on **InkFormulation**.



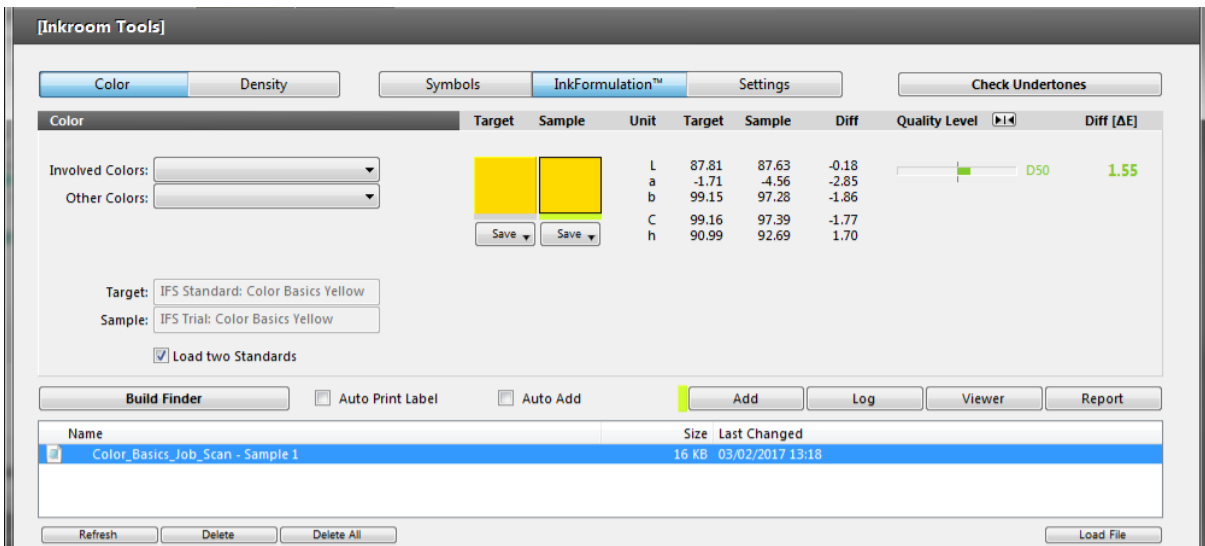
You will find a list of cxf files to be imported in the bottom window.

6. Select a file and click **Load File**.

7. The cxf Sample Selector opens. Select a color and click **Select**.

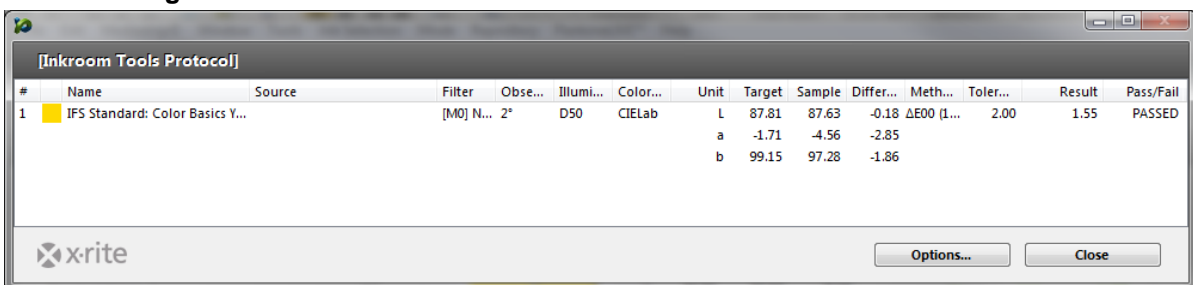


8. You have imported the target and last drawdown measurement from InkFormulation and can see the results in the ColorCert Inkroom Tools.



9. You can now click **Add** to add them to the log.

10. Then click **Log** to see the Inkroom Tools Protocol.



Note: You can add further colors to the log and click **Options** to export the protocol. If you close the Inkroom Tools the protocol will be deleted.

11. You can also click **Report** to get a report of this color.

12. If all tasks are done with this cxf file, select it and click **Delete** to keep the shared folder tidy.