



“With X-Color QC, you can take full control of color data across a global network, including management of security and data access, all in one convenient solution.”

▲ PICTURED: With X-Color QC, track and control color data for a variety of materials in automotive and other industries; complete real-time connectivity, controlled access.

## X-Color QC

### Quality Control Software



### Overview

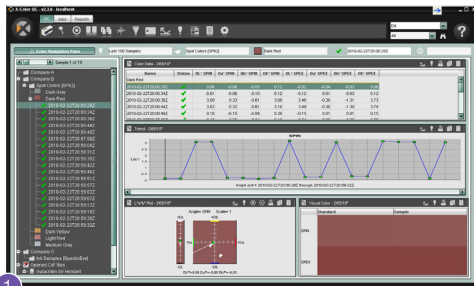
Organizing color data for all types of surfaces, materials and coatings while giving controlled access to authorized users can be a challenge and often requires the use of several systems, increasing potential errors and costly delays and rework. X-Color QC gives you the freedom to efficiently control color quality while reducing the margin for error. No need for separate systems and no need to patch different systems together. Control instrument settings and product color palettes at the individual user level.

### Key Benefits

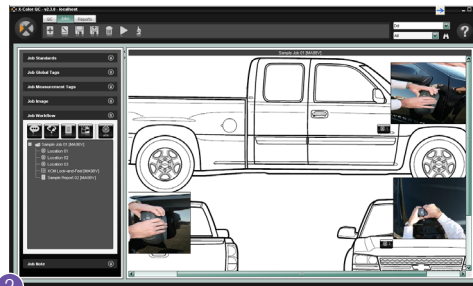
X-Color QC combines centralized data management with process control and procedural automation. It is easy to set up and configure, but flexible enough to model customer practices, workflows and user roles. It complies with ISO standards for communicating color, including CxF, and combines tolerancing with compliance verification and color communication. X-Color QC is the easiest and most efficient means of managing complex color data across a distributed global supply chain.

### Benefits

- Enables companies to organize and control color data for all types of surfaces, materials, and coatings for different facilities across the globe from a single system in real time. This ensures consistent color at final assembly, on the shelf or in the showroom.
- Features built-in flexibility to expedite color analysis and streamline reporting and data management with no compromise to security. Users with little training can perform color collection and analysis.
- Manage, control and track color during design, production and assembly, more easily detecting, analyzing and containing color errors. Early in the process, identify the impact of color choices on appearance, from recipe, process and batch.
- More effectively communicate standards, specifications and submissions throughout the global supply chain.
- Supports a variety of database formats for easy integration into existing workflows.



1



2

- ① Easily analyze color data.
- ② Validate color choices and appearance.

## Recommended

### X-Rite MA98

The X-Rite MA98 multi-angle spectrophotometer features 11 angles of measurement and 2 illuminants to assess color accuracy for special effect and other paints and coatings. Standards-compliant, it makes it easy to accurately measure flat, flexible and curved surfaces by using three pressure sensors that quickly indicate to operators that they have positioned the instrument correctly. Using the JOBS function, the instrument's large color LCD screen indicates where measurements should be taken with both text and visual cues, and records data for analysis using X-Color QC.

### CarFlash

CarFlash is a non-contact multi-angle spectrophotometer designed to be integrated inline in robotics systems to ensure integrity of color quality throughout the production process. Non-contact inline measurement mitigates the risk of damaging paint during the measurement process. In addition, there is excellent inter-instrument agreement between CarFlash and X-Rite multi-angle spectrophotometers used in the laboratory. This ensures color consistency from design through manufacturing for even the most complex special effect paints and coatings.

## Service Support & Warranty

Drawing on our extensive experience in the world of color, X-Rite Pantone offers the right level of services, on-site or online, to support and nurture your business. Call on us for standard color services and training courses, or work with us to tailor training and services to your specific needs. We help you get color right the first time, right every time. For more information about extended support options, visit

[www.xrite.com/extended-warranties-services](http://www.xrite.com/extended-warranties-services).

## Specifications

	X-Color QC
Measurement Conditions	Reflectance, Transmission, SCI / SCE
Color Differences	FMCII, CIE DL*, Da*, Db*, CIE DL*, DC*, DH*, Hunter DL, Da, Db, All Attributes of CIELab, CIELch or HunterLab, CMC (l:c), CIE2000 (l:c:h)
Color Spaces	CIE L*a*b*, CIE L*C*h*, Hunter Lab, CIE (XYZxy)
Illuminants	A, C, D50, D65, D75, F2, F7, F11, F12
Observers	2 degree, 10 degree
Standard Indices	DIN6172, B-Depth, TAPPI452 B, TAPPI452 dB, DIN6175, Haze, Opacity, E313 98 dT, E313 98 T, Ganz / Griesser dT, Whiteness [E313, Ganz], Yellowness [D1925, E313]
Databases	MS SQL Server
Import/Export Format	CxF, MIF, XTF
Languages Supported	English, French, German, Spanish, Italian, Portuguese, Japanese, Chinese
Supported Devices	MA94, MA96, MA98, SP62, SP64, Color i5, Color i7, CE-7000A, 962, 964

Full list of specifications available at [www.xrite.com/xcolor-qc](http://www.xrite.com/xcolor-qc)