

X-RiteColor Master

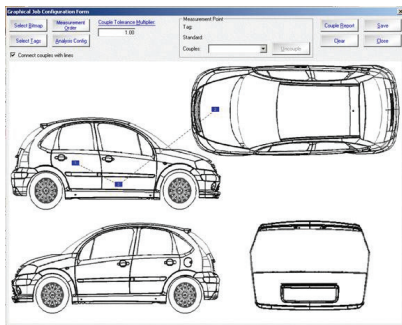
Color Formulation and Quality Assurance Software

Reduce downtime and eliminate needless color mistakes with this versatile software package that provides immediate access to color control data in any type of manufacturing facility. Available in a choice of applications to meet specific industry and color communication requirements.



Color Master Advantages

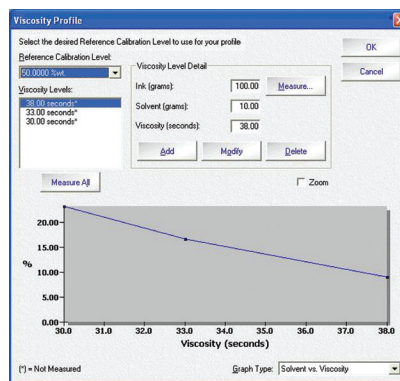
- **Tolerancing.** Standard, custom, and multiple tolerance options reduce set-up time and operating costs
- **Color Coded, Tags, and Notes.** Samples can be organized and tag for quick assessment and easy data management
- **Custom Reporting.** Multiple types of standard and custom reports can be created to simplify recording and access
- **Projects and Jobs.** Organization and measurement functions that work in conjunction with handheld instruments to reduce measurement error
- **Graphical Job Function.** Allows setting of measurement points on a visual bitmap for easy analysis and comparison
- **Waste Workoff.** Designates leftover material for reuse, reducing the cost of formulation, inventory, and waste disposal
- **Instrument Compatibility.** Software is fully compatible with X-Rite 0/45, sphere, multi-angle, and non-contact instruments



X-RiteColor Master Quality Assurance Software

Immediately enhance quality with this flexible software solution for color data analysis in the lab or on the production line. Available in a choice of three versions.

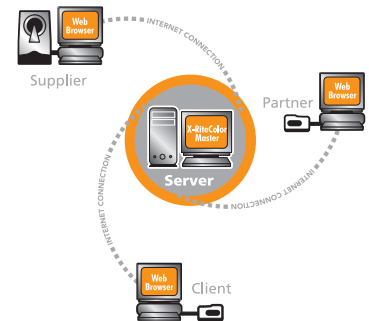
The graphical capabilities of the Metallix-QA program allow for application-specific bitmapping for advanced comparison.



X-RiteColor Master Formulation Software

High-performance color formulation and quality assurance are provided in one versatile package. Available in a choice of three levels for formulating opaque, translucent, and transparent colors.

The viscosity readings provided by Formulation-Master II and III reduce formulation error and optimize paint stock.



X-RiteColor Master Web Edition

A browser-based version that supports multiple locations to ensure accuracy, reliability, and supplier conformity.

The Web Edition gives multiple users simultaneous access to color data from multiple locations around the globe.

Color Master Features

	QA Master			Formulation Master		
	QA I	QA II	Metallix-QA	FM I	FM II	FM III
Communications Options						
Network (LAN) version	•	•	•	•	•	•
Web Edition (Internet) Computing			•			•
Multiple III						
A, C, D50, D65, D75, F2, F7, F11, F12	•	•	•	•	•	•
Data Views						
Multiple view capability		•	•		•	•
Simple, L*a*b*, indices (L*a*b* data, general and textile), spectral, spectral data, status density, trend, notes & tags, and visual color	•	•	•	•	•	•
FMC2		•	•		•	•
Formula		•	•	•	•	•
Verbal color		•	•		•	•
Split visual sample view	•	•	•	•	•	•
Temporary standard		•	•		•	•
View recently used standards	•	•	•	•	•	•
Enhanced trend plot		•	•			•
Functions						
SpectroSync (sold separately)		•	•	•	•	•
Color-coded tag plot		•	•		•	•
Formulate with workoff				•	•	•
Tolerance warning level	•	•	•	•	•	•
Dot area/contrast ratio calculation		•	•		•	•
Multiple formulation methods				•	•	•
Quick correct				•	•	•
Assign and create tags		•	•		•	•
Filters		•	•		•	•
Multiple tolerances for standards		•	•			•
User defined controls		•	•		•	•
Projects and jobs		•	•		•	•
Alternate standard creation		•	•		•	•
View sets		•	•		•	•
Multiangle databases	•		•		•	•
Create/modify calibration sets						•
ColorDesigner® emulation						•
Shade Libraries						•
Filter by Lot ID		•	•		•	•
Default tolerance by customer	•	•	•	•	•	•
Enhanced save as function	•	•	•	•	•	•
Hunter L*a*b*	•	•	•	•	•	•
Color stability test		•	•			•
Functionality to set master panels		•	•			•
Graphical job functionality		•	•			•
Additional category tag function		•	•			•
Ability to set custom tolerances		•	•			•
Viscosity					•	•
Deleted colorant tracking report					•	•
Fix loading/opacity				•	•	•
Loading by percent weight				•	•	•
Fixed items formulation				•	•	•
Mark trial with film weight				•	•	•
Reports						
General	•	•	•	•	•	•
Conformance and custom		•	•		•	•
Sample and sample set	•	•	•	•	•	•
Excel reporting		•	•		•	•
Site information	•	•	•	•	•	•
Languages						
English, French, Italian, German, Portuguese, Spanish, Japanese, and Chinese (Simplified)	•	•	•	•	•	•
Training						
On-line help quick access	•	•	•	•	•	•
Four day training class at X-Rite						•

System Requirements

X-RiteColor Master Software: Microsoft Windows 2000 or Windows XP Pro; Pentium III processor - 450 MHz or higher; 256 MB of Ram; minimum screen resolution of 1024 X 768

X-RiteColor Master Web Edition: Client Requirements — Microsoft Windows 98 SE, Windows 2000, or Windows XP Pro; 14.4 baud rate connection to web; minimum screen resolution of 1024 X 768; server connection (internet or intranet); firewall must open terminal services port 3389

Server Software Requirements — Windows 2000 or 2003 server with terminal services; Windows 2000 or 2003 server Client Access Licenses (CALs) and Terminal Service Client Access Licenses (TSCALs) for each client

Server Hardware Requirements — Dependent on number seats required. Contact your IT department or an X-Rite representative

X-Rite: Your source for accurate color. On time. Every time.

X-Rite is a world leader in providing global color control solutions for manufacturing and quality management requirements.

We lead the industry in offering service options to ensure uninterrupted performance of all X-Rite products. Training and educational resources are available globally and online for both new and experienced users to optimize their color measurement capabilities.

Visit xrite.com for more information about X-Rite products. X-Rite customers worldwide may also call the Applications Support team at CASupport@xrite.com or Customer Service at 800-248-9748.

X-RITE WORLD HEADQUARTERS

Grand Rapids, Michigan USA • (800) 248-9748 • +1 616 803 2100

© 2013, X-Rite, Incorporated. All rights reserved.



xrite.com