

# X-RiteColor® Master Web Edition

This document contains instructions for installing X-RiteColor Master Web Edition. Please follow all instructions carefully in the order given. **Before proceeding, verify that Windows Server 2008 (R2), 2012 (R2), or 2016 has been installed and Remote Desktop Services (TermService) is running. This server should be dedicated as an X-RiteColor Master Server only and not be used for any other purpose. It should also not belong to any other domain to avoid domain settings from interfering with the proper operation of this server. If the server is behind a firewall, TCP port 3389 (or 3391 if using UDP) must be made accessible through the firewall.**

Verify that Windows Server 2008 (R2) has been installed and configured with the “Server Roles” as shown below (Figure 1). Verify that Windows Server 2012 (R2) or Windows Server 2016 has been installed and configured with the “Server Roles” as shown below (Figure 2).

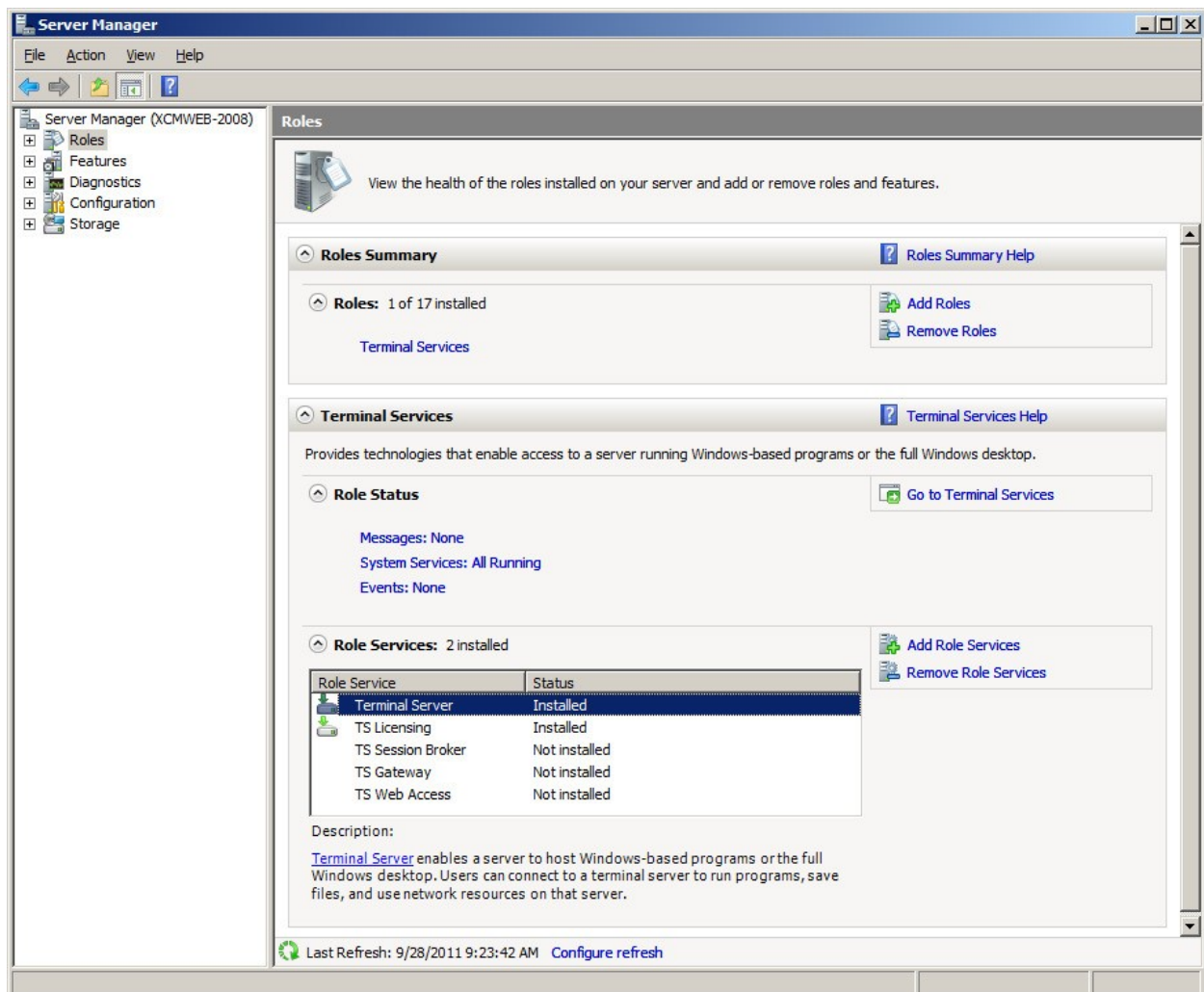


Figure 1

# X-RiteColor® Master Web Edition Installation Instructions

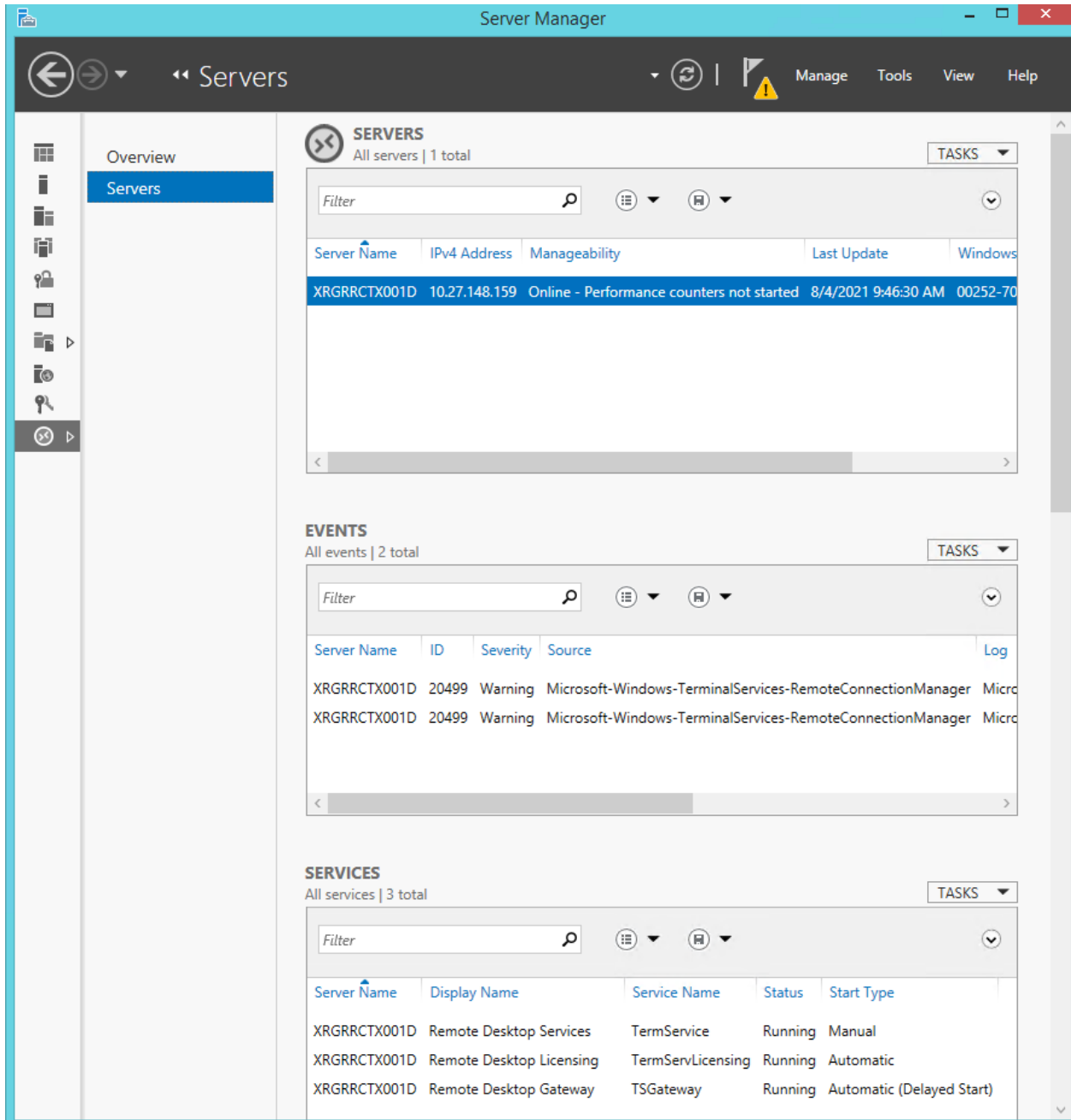


Figure 2

## Update Installation

If you are updating a previously installed version, make sure that all X-RiteColor Master Web Edition users have been logged off. Log into the server **as an administrator** and install X-RiteColor Master Web Edition. For Windows Server 2008 (R2), use the Install Application on Terminal Server procedure found in the Programs section of the Control Panel (Figure 3). For Windows Server 2012 (R2) or Windows Server 2016, use the Install Application on Remote Desktop Server procedure found in the Programs section of the Control Panel (Figure 4).

# X-RiteColor® Master Web Edition Installation Instructions

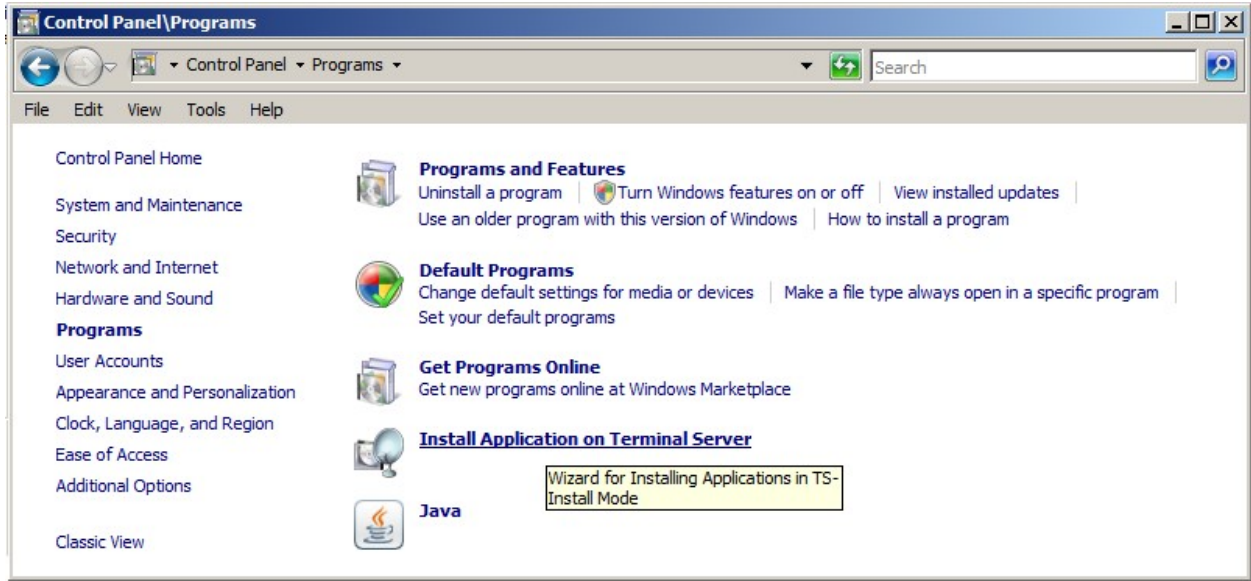


Figure 3

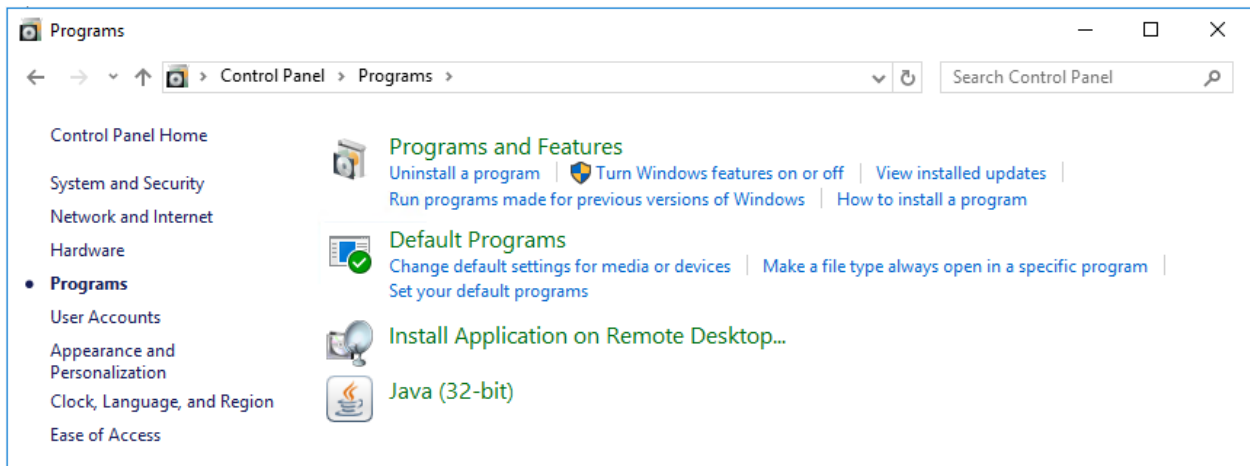


Figure 4

This automatically places the server into install mode (Figure 5), which is required when installing programs into Terminal Services. Accept all defaults during the installation.

## X-RiteColor® Master Web Edition Installation Instructions

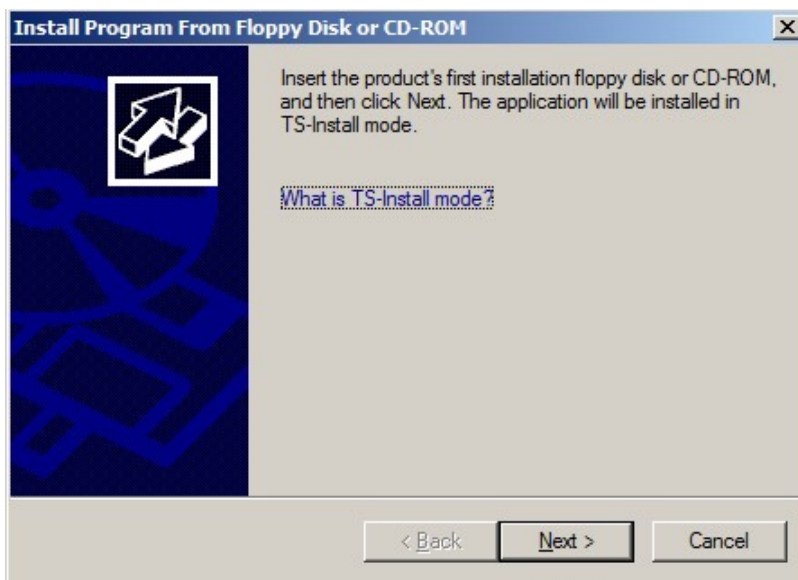


Figure 5

Just before the update installation is complete, you will be prompted with the Administrator Login screen, with the **Administrator User Name** set to "admin" (Figure 6).

1. To proceed, type in your current **admin** password (if not specifically set, the default is "**password**").
2. Click **OK**.
3. Click **Finish**.

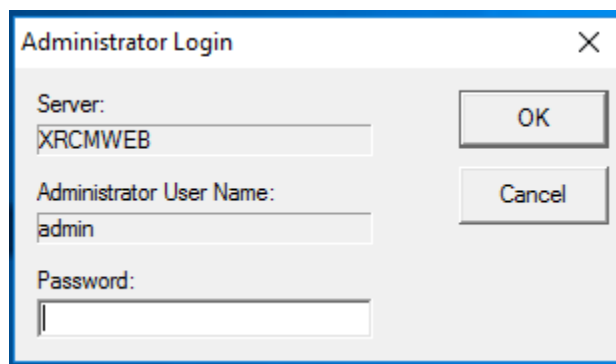


Figure 6

### New Installation and User Setup

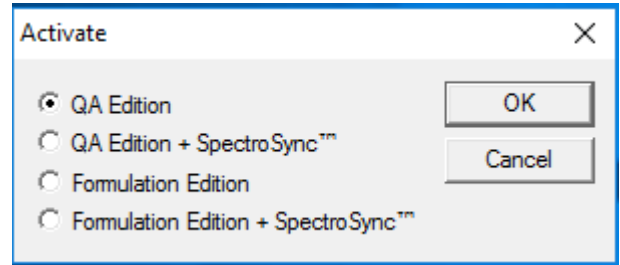
The first task in the installation process is to install X-RiteColor Master Web Edition onto the server. Log into the server **as an administrator** and install X-RiteColor Master Web Edition. Accept all defaults during the installation.

## **X-RiteColor® Master Web Edition Installation Instructions**

### **Product Licensing**

You must activate and license X-RiteColor Master before you can run the program.

1. Double-click the **Activate** icon on the Desktop. This will bring up the Activate dialog (Figure 7).
2. Select the product you have purchased and click **OK**.

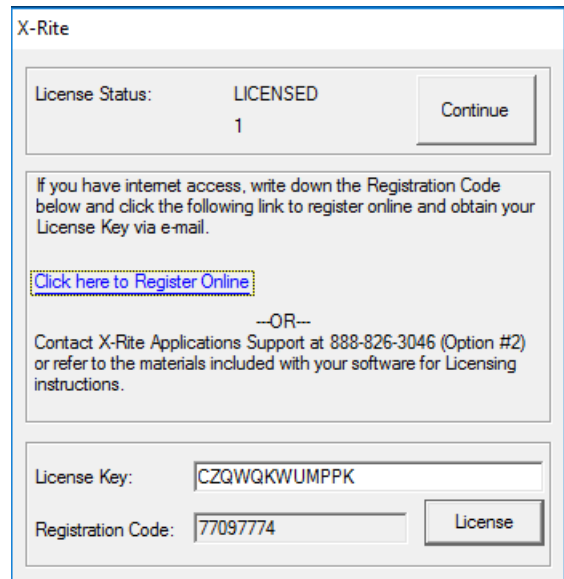


**Figure 7**

3. In the resulting registration screen (Figure 8), type the license key and click **License**.

OR

click the link to register online.



**Figure 8**

## X-RiteColor® Master Web Edition Installation Instructions

### Terminal Services / Remote Desktop Configuration Settings

1. For **Windows Server 2008 (R2)**, from the Windows Start menu, select Programs – Administrative Tools – Terminal Services – Terminal Services Configuration.
2. In the Terminal Services Configuration dialog, make the selections as shown in Figure 9.

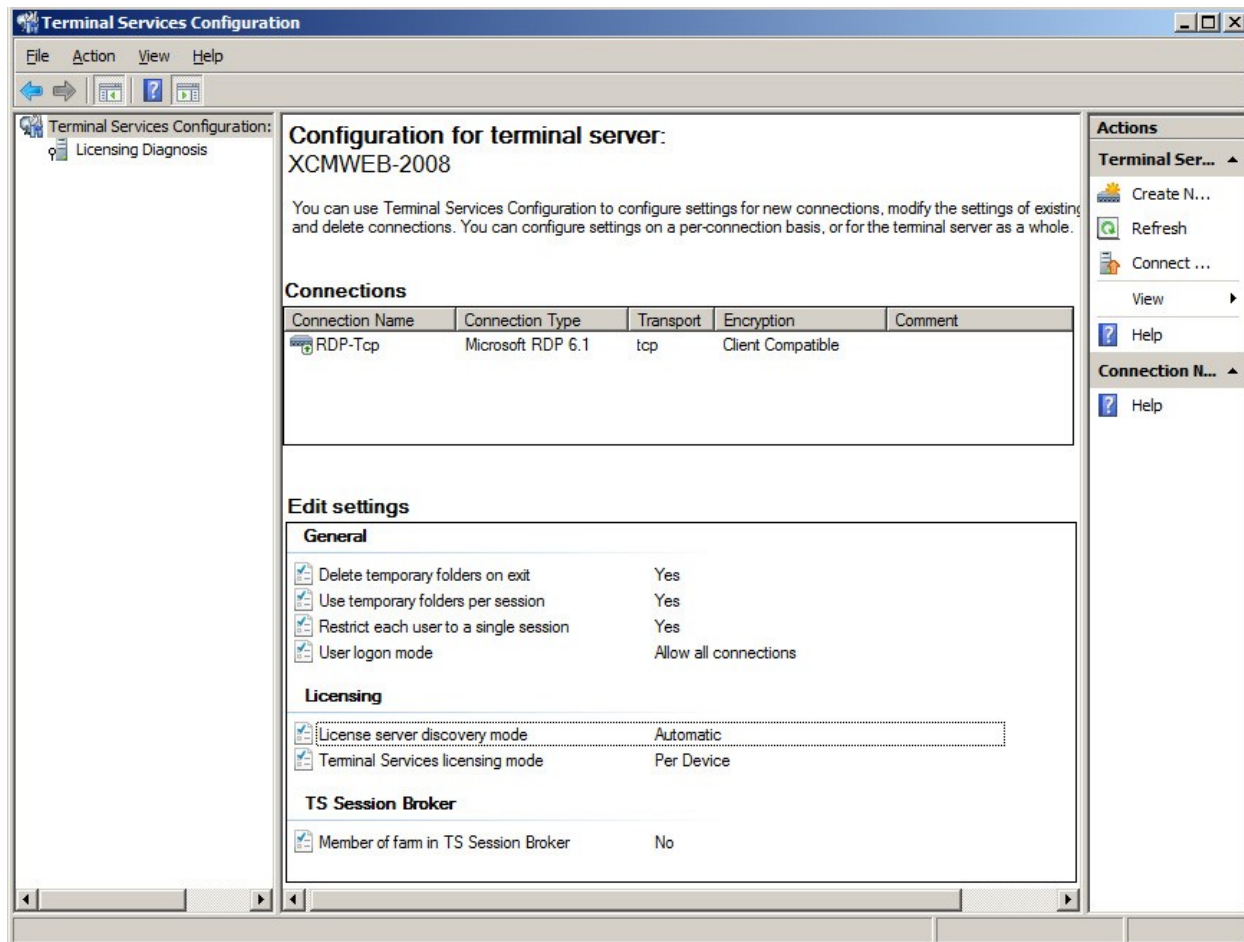
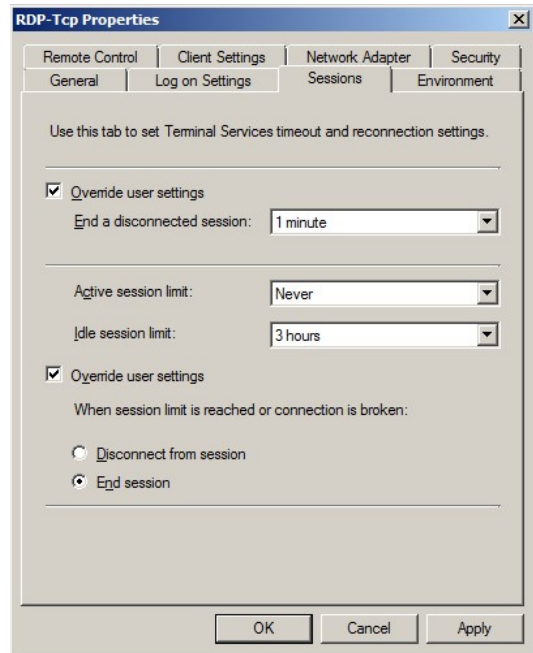


Figure 9

3. Right-click RDP-Tcp in the **Connections** section and select **Properties**.
4. In the Properties dialog, make changes to settings in the Sessions tab, the Remote Control tab, and the Client Settings tab as illustrated in the following figures.

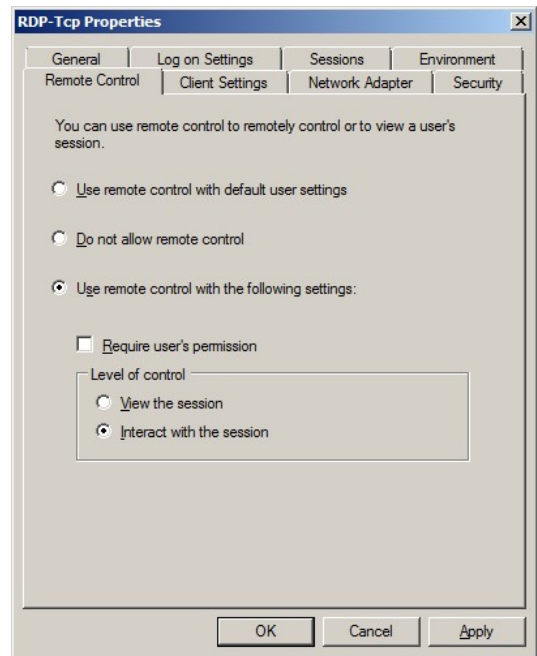
## **X-RiteColor® Master Web Edition Installation Instructions**

5. Click the **Sessions** tab, and make the selections shown in Figure 10.



**Figure 10**

6. Click the **Remote Control** tab, and make the selections shown in Figure 11.



**Figure 11**

## X-RiteColor® Master Web Edition Installation Instructions

- Click the **Client Settings** tab and make the selections shown in Figure 12.

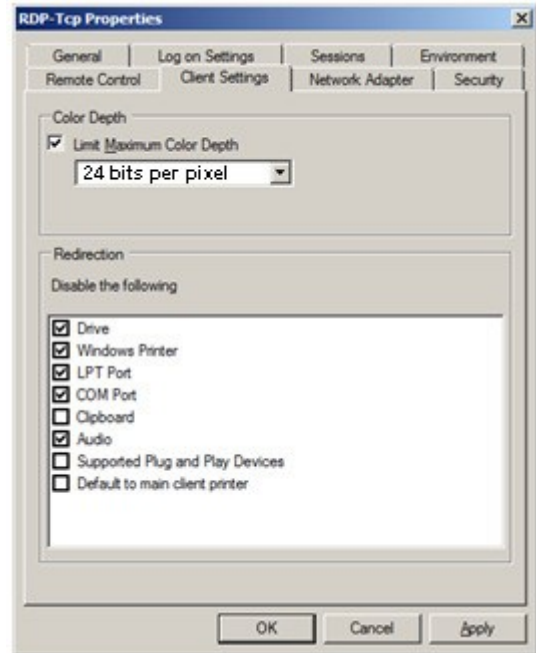


Figure 12

- Click the **Permissions** tab and make the selections shown (Figure 13) for Remote Desktop Users, Terminal Server Users, and Users.

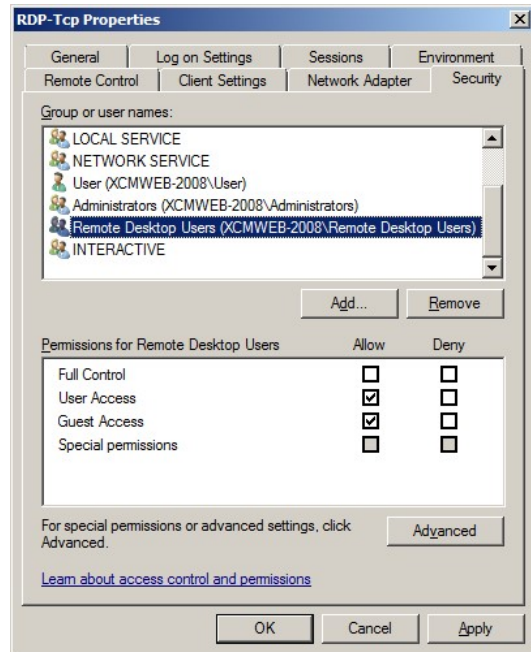
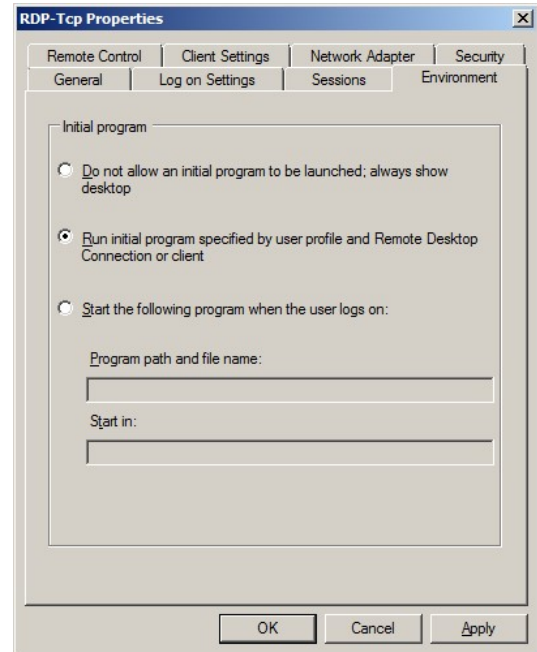


Figure 13



## **X-RiteColor® Master Web Edition Installation Instructions**

9. Click the **Environment** tab and make the Selections shown in Figure 14.
10. Click **OK** to save the settings and close the dialog.



**Figure 14**

# X-RiteColor® Master Web Edition Installation Instructions

11. Using the Microsoft Management Console (mmc), apply the settings as shown in Figures 15 and 16.

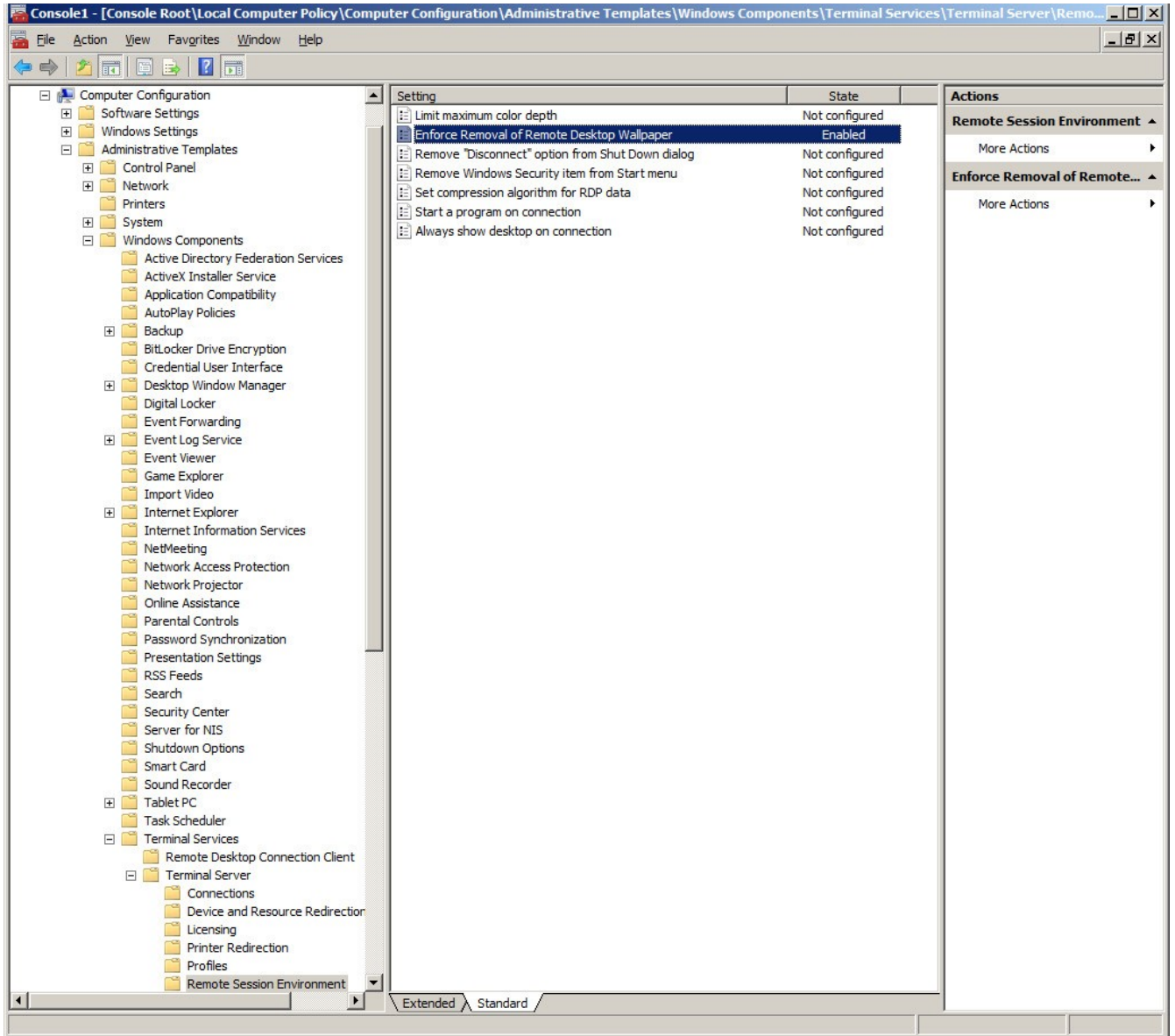


Figure 15

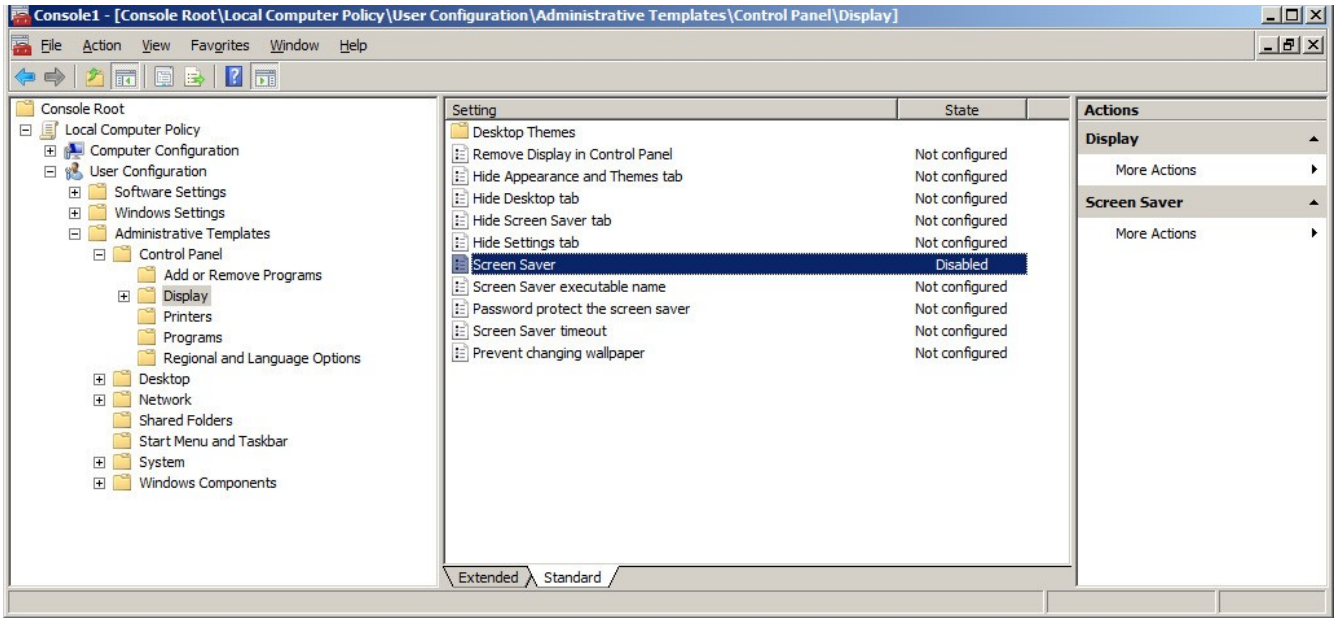


Figure 16

12. For **Windows Server 2012 (R2)** or **Windows Server 2016**, from the Server Manager screen - click on Tools - Terminal Services (or Remote Desktop Services) - Remote Desktop Gateway Manager.
13. Highlight **Connection Authorization Policies** as shown in Figure 17 and choose "Create New Policy".

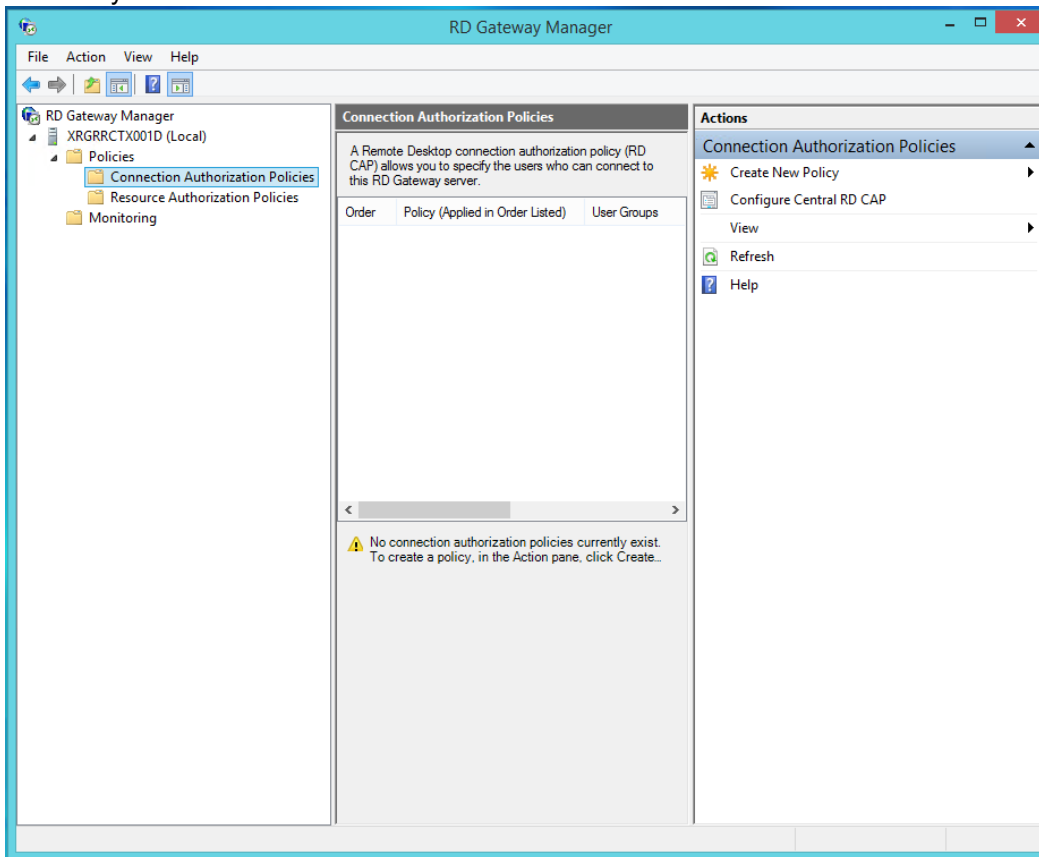


Figure 17

# X-RiteColor® Master Web Edition Installation Instructions

14. Give the policy a name (like XCM Web) and add the items as shown in Figures 18, 19, and 20.

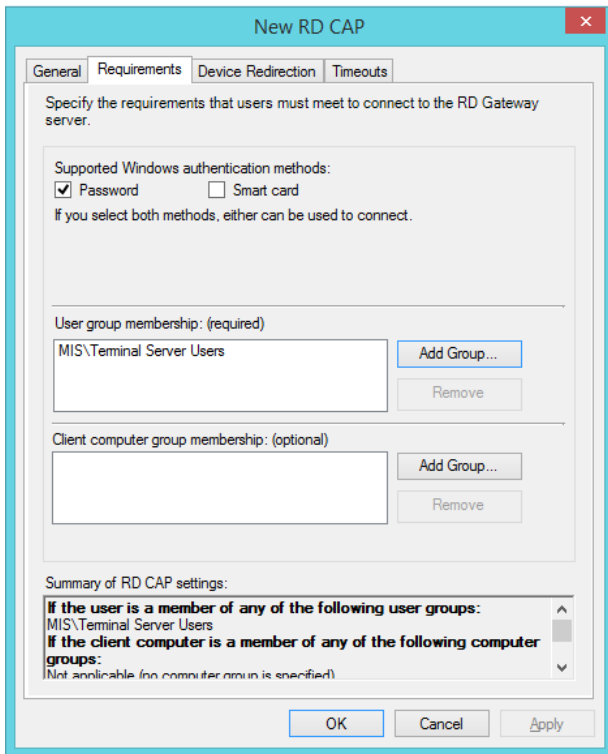


Figure 18

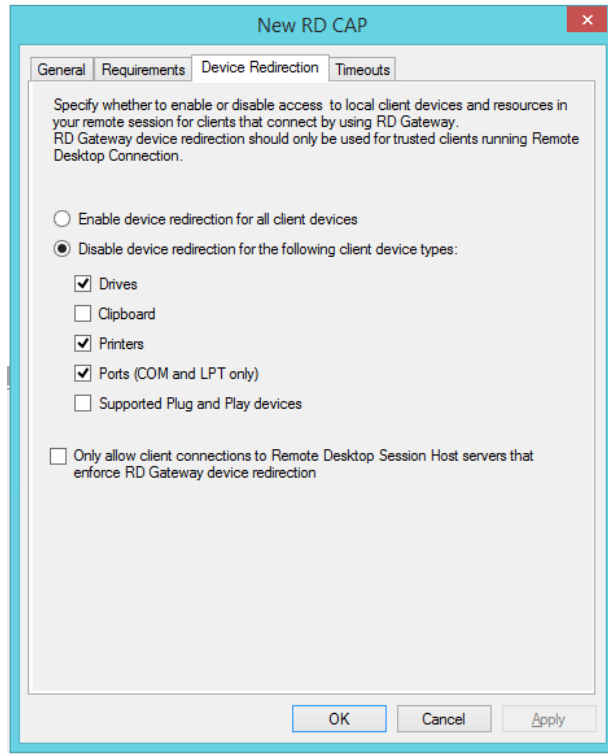


Figure 19

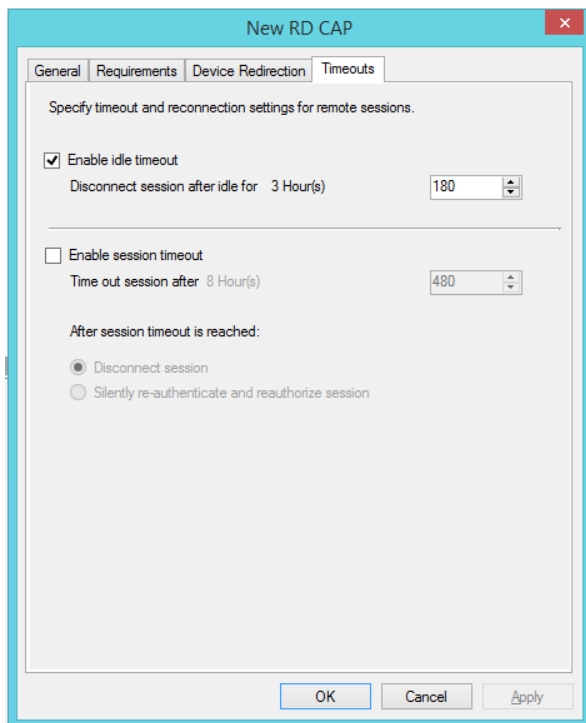


Figure 20

## X-RiteColor® Master Web Edition Installation Instructions

### Creating X-RiteColor Master Users

1. You must create X-RiteColor Master users at two levels: the user that can log into the computer, and the user you create within X-RiteColor Master using the X-Admin utility. First create the computer users.
2. For each user created, right-click the user's name and select **Properties**.

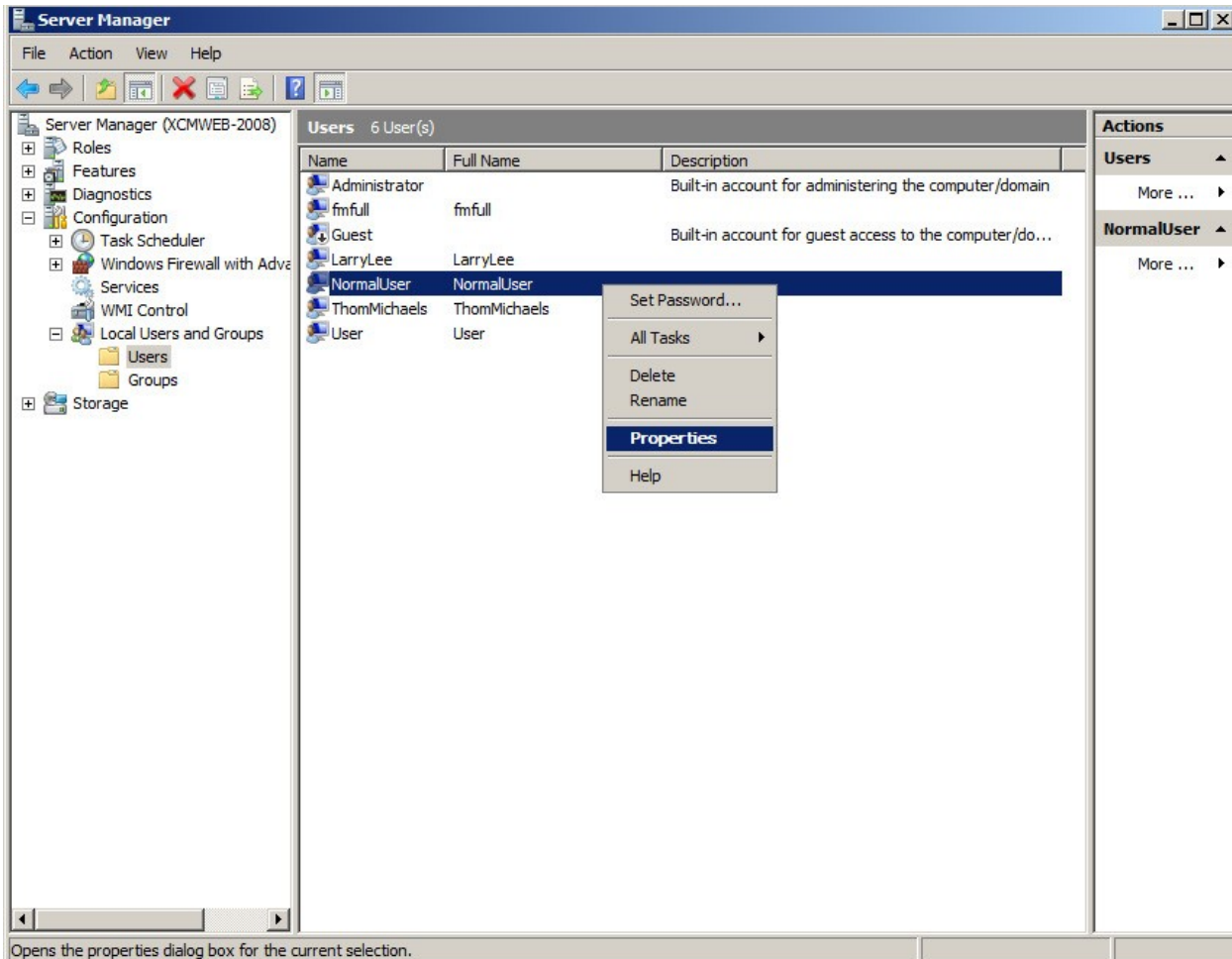


Figure 21

## X-RiteColor® Master Web Edition Installation Instructions

3. In the Properties dialog, click the **Member Of** tab and add the **Remote Desktop Users** group as shown in Figure 22.

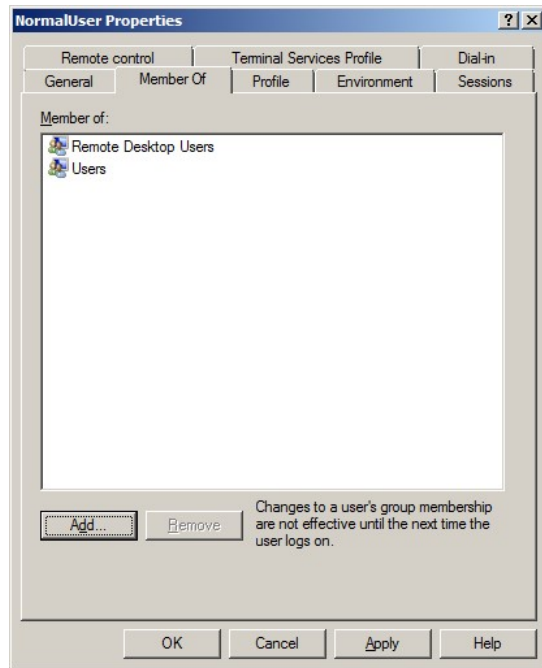


Figure 22

4. In the Properties dialog, click the **Environment** tab and set the "Starting program" section as shown in Figure 23. The "Client devices" section can be ignored because it is overridden by the "Terminal Services Configuration" settings.
5. Click **OK** to save all settings and close the dialog.

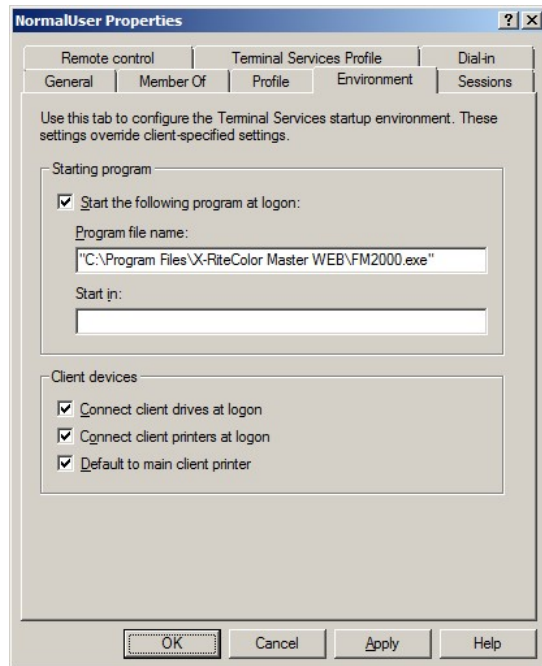


Figure 23

## X-RiteColor® Master Web Edition Installation Instructions

- After creating the computer users, run the XAdmin utility using the icon on the desktop. The Administrator Login screen appears, with the user's name set to "admin" (unless previously changed).
- To proceed, type password (all in lower case).
- Click **OK**.

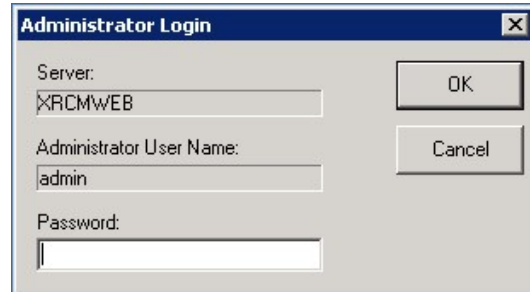


Figure 24

- When X-Admin opens, navigate to the **User Management** tab.

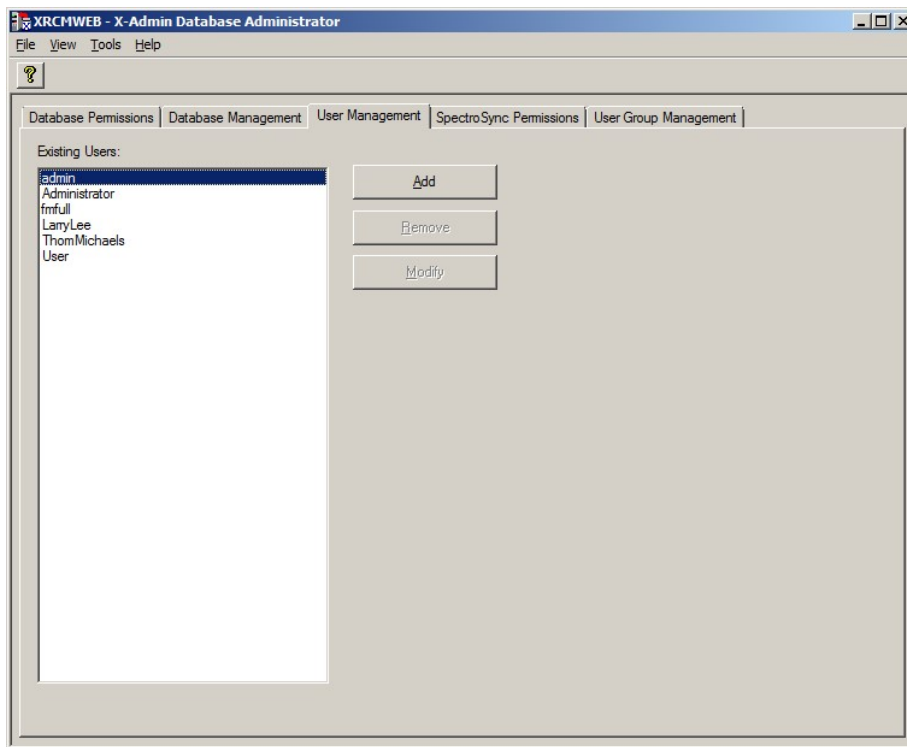


Figure 25

- To add each user, select the user's name from the list and click **Add**. In the example in Figure 26, a user called "NormalUser" was created. The password for all users must always be set to "password". The user's name entered here **must match exactly (including case)** the associated computer user you set up previously.

# X-RiteColor® Master Web Edition Installation Instructions

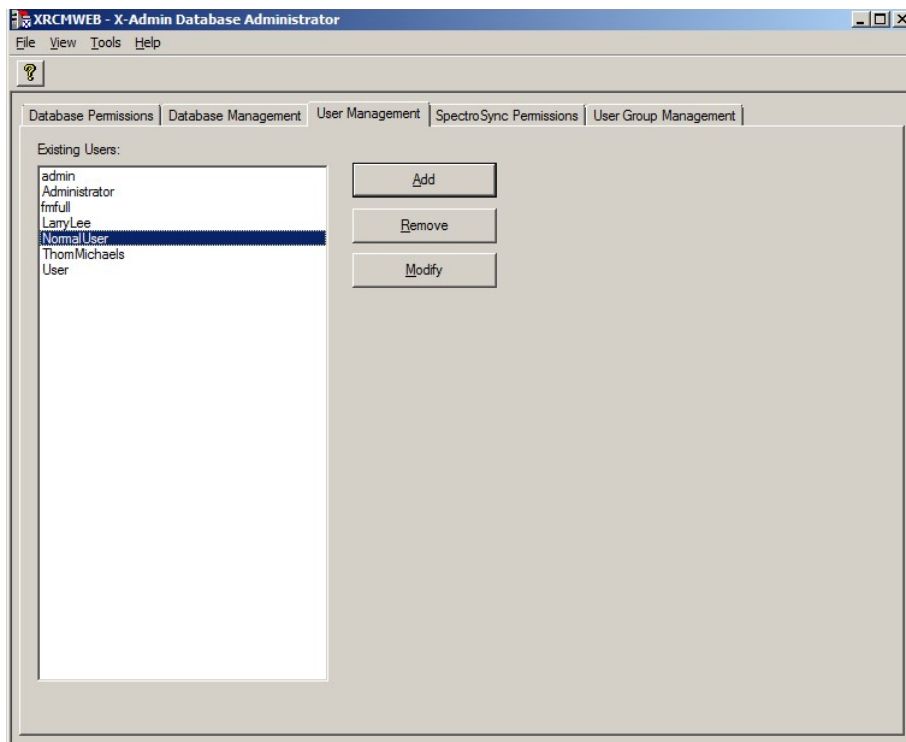


Figure 26

11. Click the **Database Permissions** tab to assign database permissions for this user as needed.

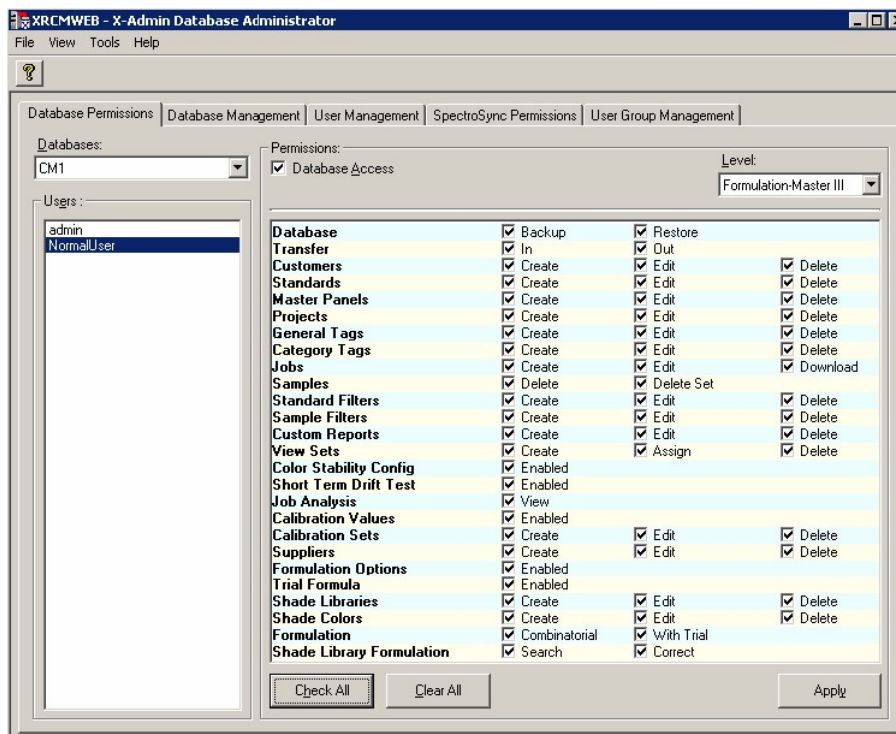


Figure 27



## X-RiteColor® Master Web Edition Installation Instructions

12. Select the drop-down arrow for the **Level** field and designate which level of X-RiteColor Master the user can access. This option for the Web edition must be set for each user.

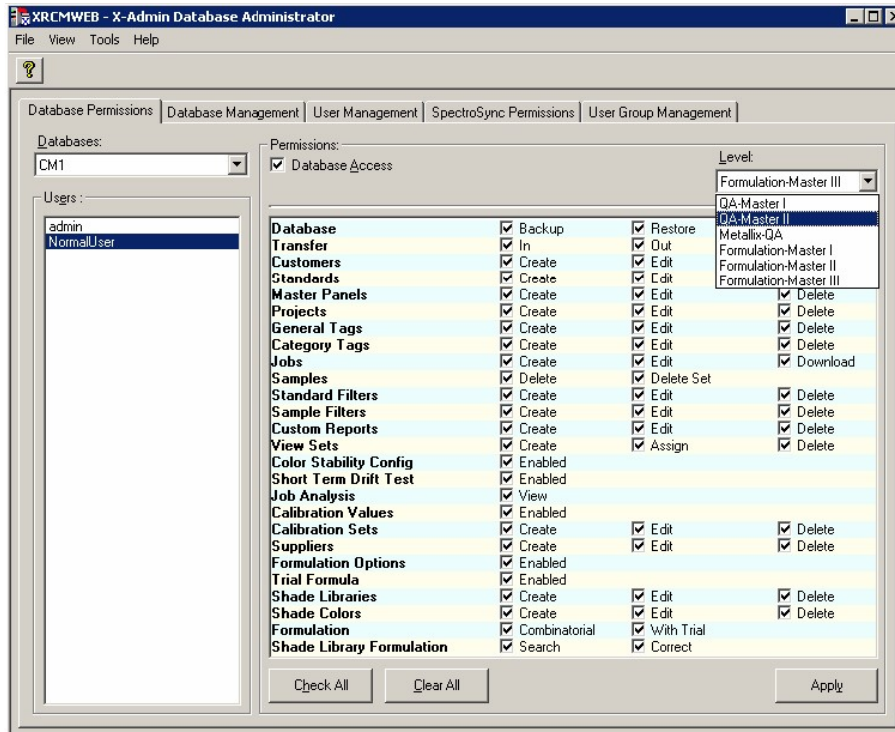


Figure 28

# X-RiteColor® Master Web Edition Installation Instructions

## User Permissions

1. Bring up Windows Explorer and navigate to the X-RiteColor Master Web directory.

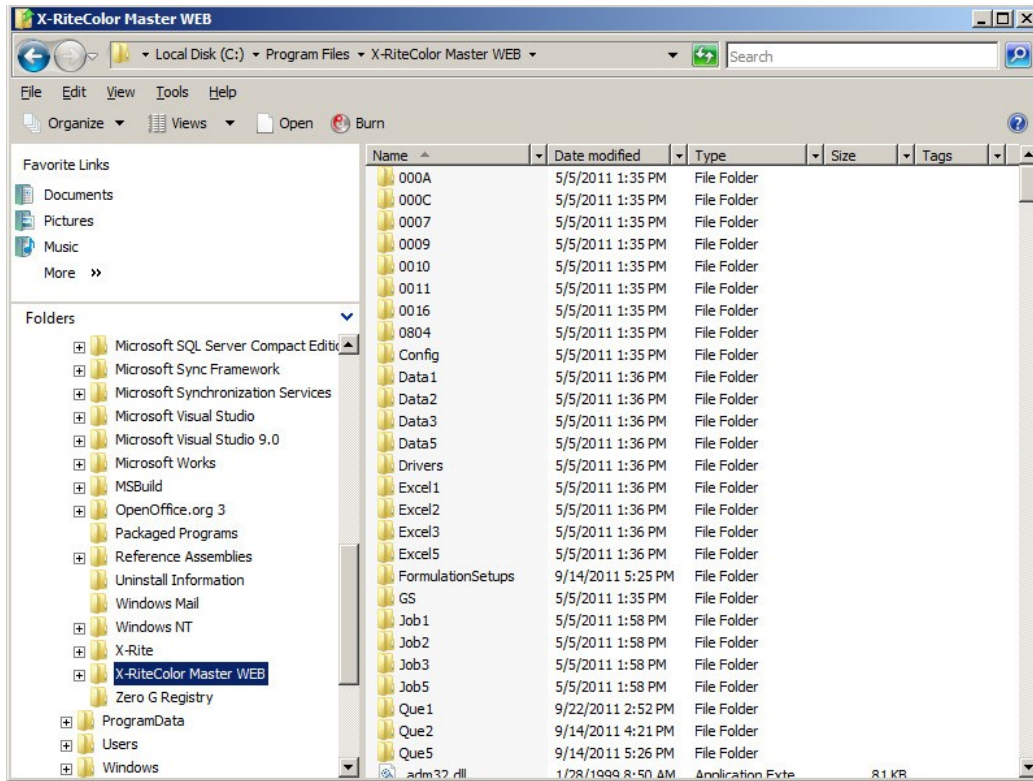


Figure 29

2. Right-click on the directory name and select **Properties**.
3. Click the **Security** tab and select **Users**. Check the **Modify** and **Write** permissions in the **Allow** column for Remote Desktop Users, Terminal Server Users, and Users. This is required because of files and folders that XRiteColor Master must be able to modify during normal operation.
4. Click **OK** to save the settings and close the dialog.

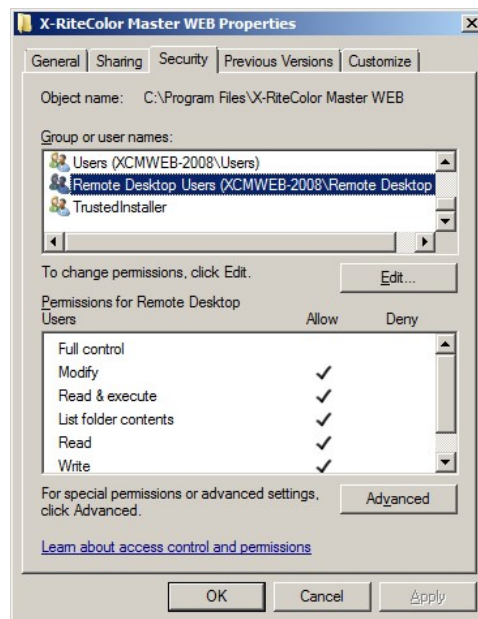


Figure 30

# X-RiteColor® Master Web Edition Installation Instructions

## Printer Install Procedure

1. Bring up the Printers dialog and select “Add a printer” to add a local printer. (Figure 31 or Figure 32, depending on the OS)

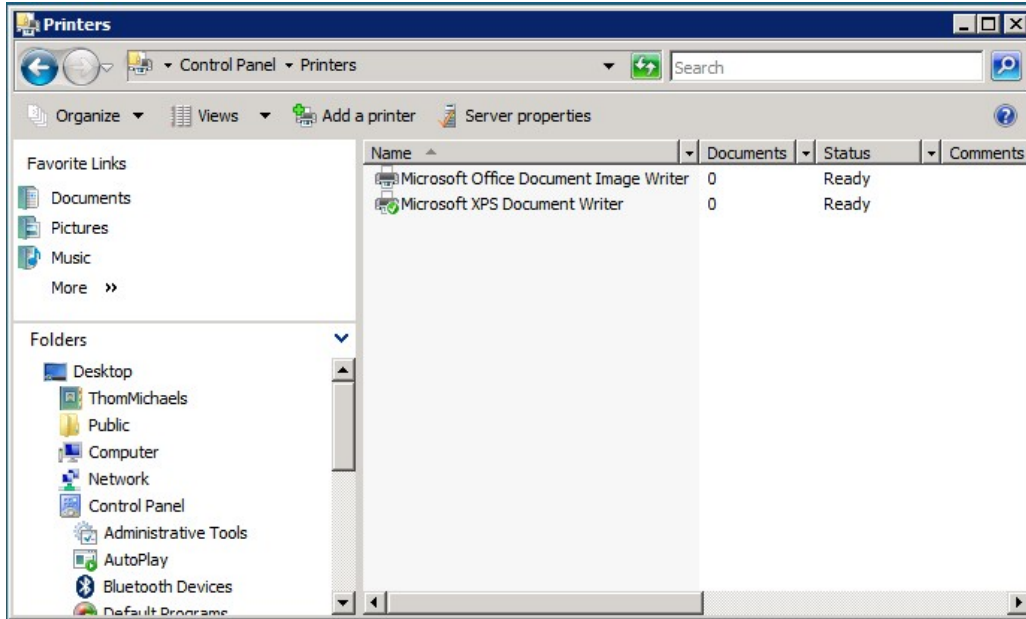


Figure 31

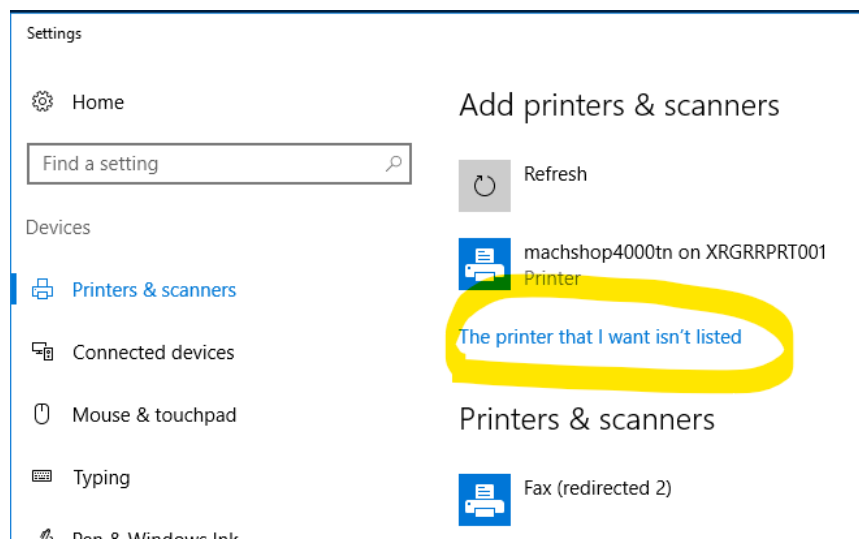


Figure 32

2. Click the “Add a local printer” option. (Figure 33 or Figure 34, depending on the OS)

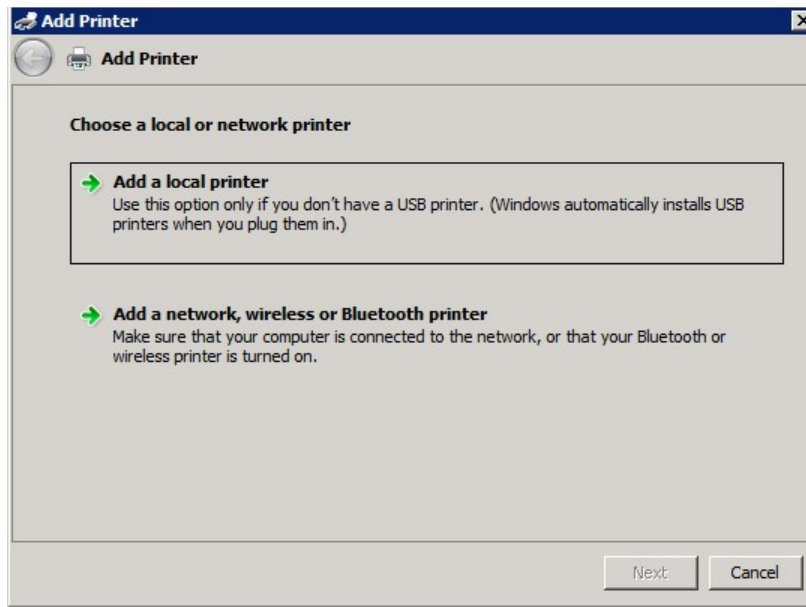


Figure 33

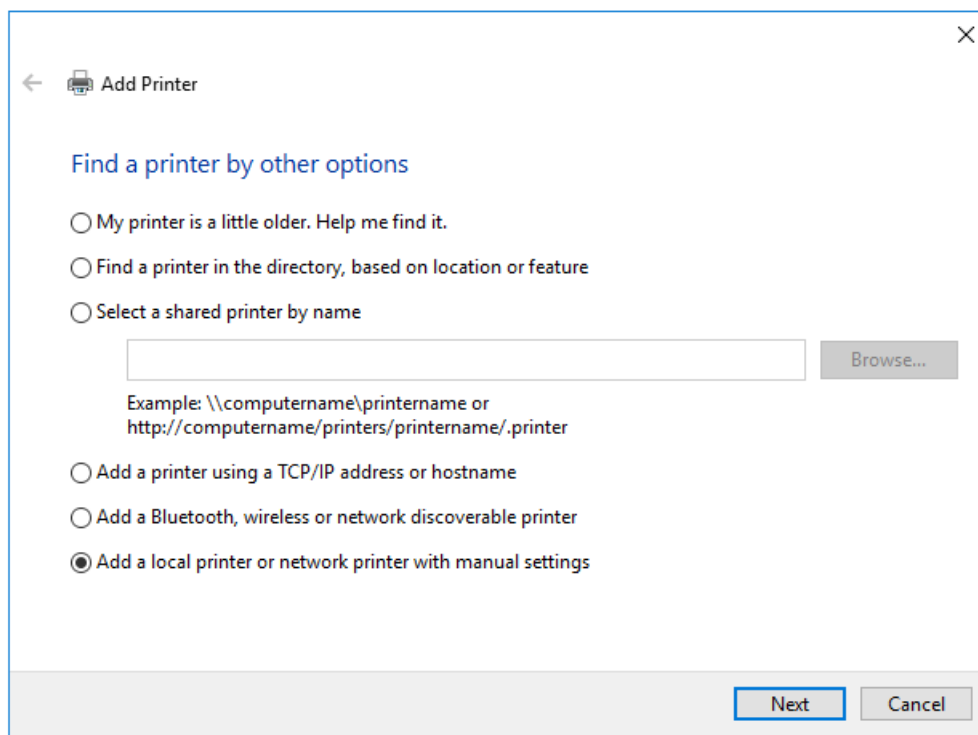


Figure 34

## X-RiteColor® Master Web Edition Installation Instructions

3. Choose “Print to File” for the printer port.

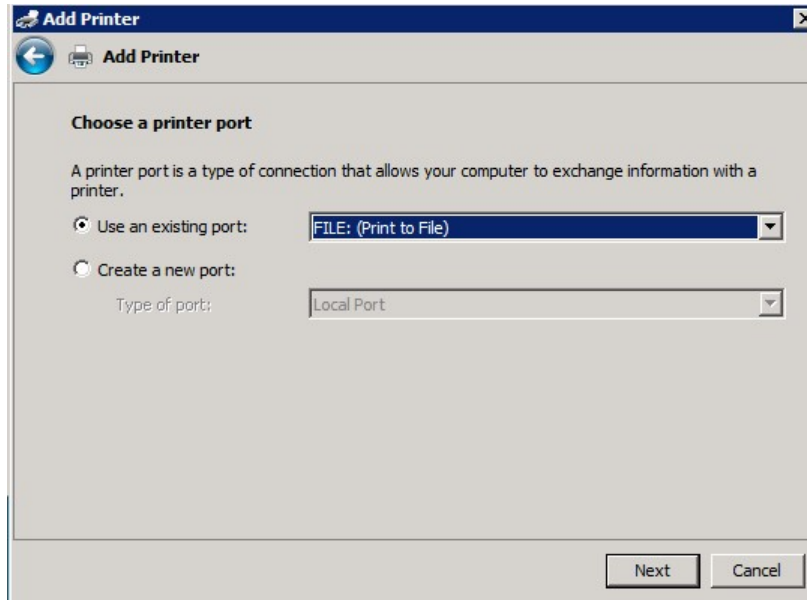


Figure 35

4. Select the HP Color Laser Jet 2800 Series PS device. Depending on your system you may need to choose a different driver. Unfortunately, there is no standard driver that works on all systems. The only requirement is that it is a PostScript (PS) printer driver.

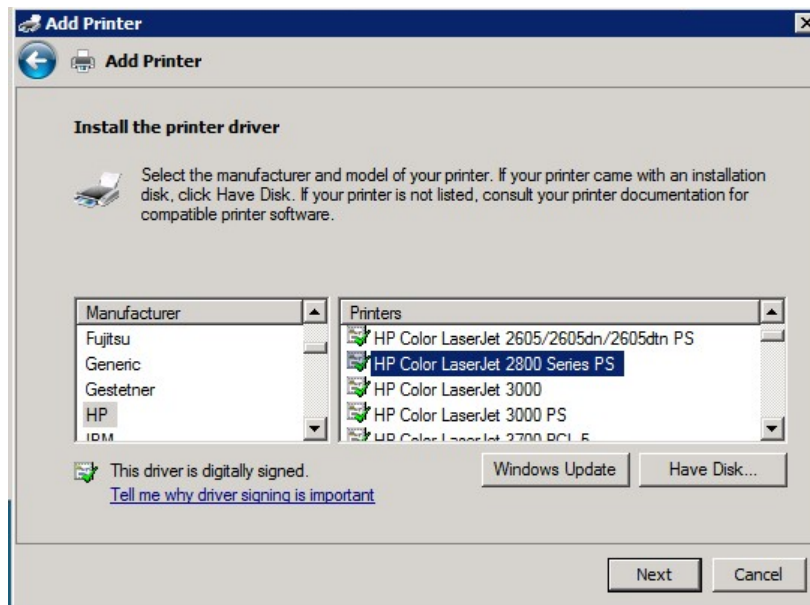


Figure 36

## X-RiteColor® Master Web Edition Installation Instructions

5. Name the printer PSFILE and set it as the default printer.

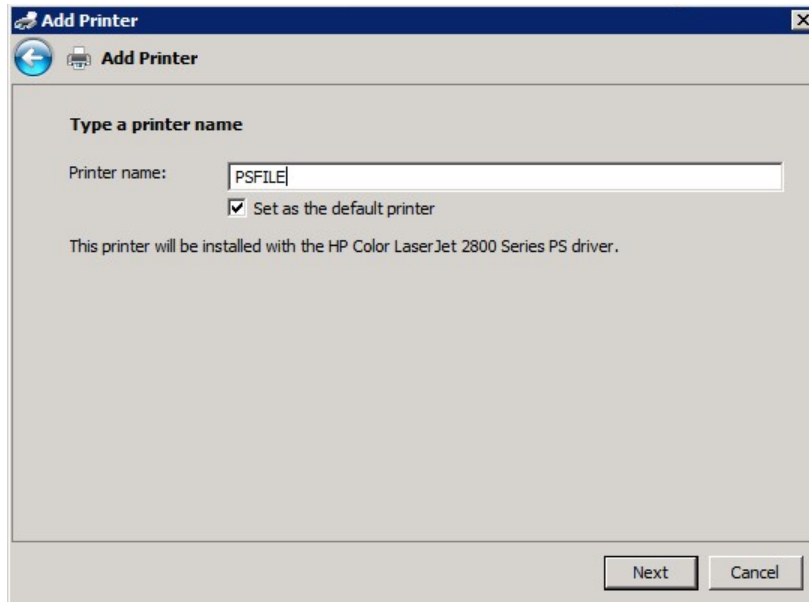


Figure 37

6. Do not share the printer.

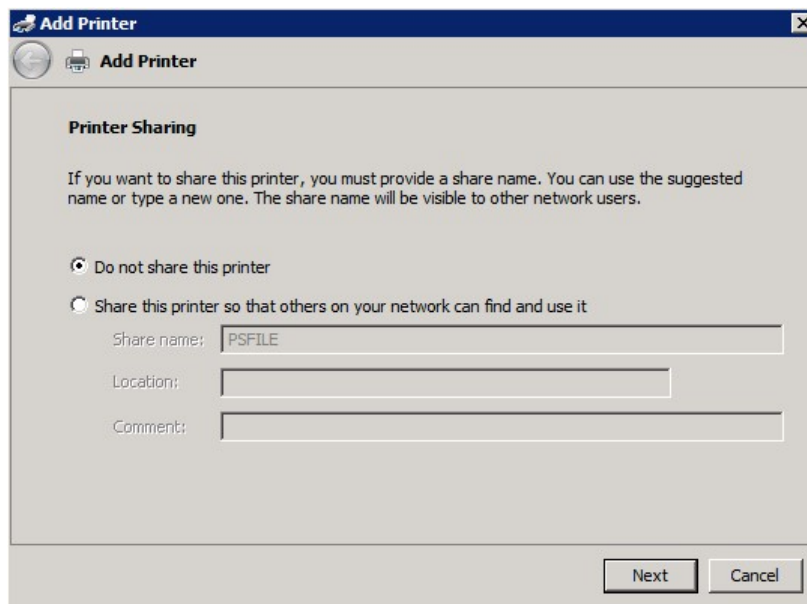


Figure 38

## **X-RiteColor® Master Web Edition Installation Instructions**

### **Client Computer Install Procedure**

1. Browse to the “Client Install” folder on the distribution CD.
2. Run the executable file “X-RiteColor Master Client vX.X.exe on each client computer that will be accessing X-RiteColor Master WEB Edition. This will configure the client and place a shortcut on the desktop that will be used to run X-RiteColor Master from the Server. There is also a “Silent Install” version (“XRCM Client Silent Install vX.X.exe”) that can be used to automate the installation using scripts or other available administrative tools.

